

May 2025 | Number 146

## President's Letter

### In this issue

President's Letter

2025 CW Election

Seminars 2026

Complexity 2026

Complexity Juror  
Profile

Sandra Rude  
Grant

Volunteering

Volunteer  
Opportunities

Policies and  
Bylaws Changes

SORG Recipient  
Show

Board Happenings

Study Groups

Classifieds

It's hard to believe we've already finished the second quarter of this year. It's unusually cool here where I live. The flowers don't seem to mind though and everything looks beautiful.

Your Board of Directors has been working very hard for you. Michele Belson is finalizing information with the venue and a committee is selecting seminar leaders for Seminars 2026. It's going to be a great conference and I hope you will join us. (The date to submit your teaching proposal has been extended to June 6 so get your idea in! It's doesn't have to be fully formed class just yet!)

Ruth MacGregor and her wonderful committee are working hard to cure the Journal backlog. We appreciate your patience!

You'll find lots of information in this newsletter about some proposed changes to our Articles of Incorporation and Bylaws . Wendy Morris and the Policies and Procedures Committee would like you to read about these changes before the upcoming Annual General Meeting July 26, 2025 at 12:00pm EDT which will be held over Zoom.

I am looking forward to seeing you online!

Sincerely,

Elizabeth Bryan  
CW President 2024-2026  
[president@complex-weavers.org](mailto:president@complex-weavers.org)

### Complex Weavers Annual Membership Meeting

The 2025 Complex Weavers Annual Membership Meeting will be held on **Saturday July 26, 2025 at 12:00 pm EDT** via Zoom. We urge you to join us as there will be voting and we will need a quorum. More information and Zoom link to follow.

## 2025 Complex Weavers Election Results

The Election Results are here! Many congratulations to our newly elected officers: Brenda Gibson, 2nd Vice President; Sharon Gardiner: Secretary; Vila Cox, Treasurer; and Sara Nordling, Study Group Coordinator.

The CW Board would like to express appreciation to the 2025 Nominating Committee of Jami Johnson and Lois Wyndham for recruiting an impressive slate of candidates for CW leadership roles. We thank them for their work. Thanks also to Alison Giachetti for managing the balloting.



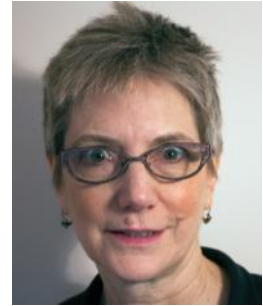
Brenda Gibson



Sharon Gardiner



Vila Cox



Sara Nordling

## Notes from A Reluctant Seminars Chair

It is scarcely more than a year until *Complex Weavers Seminars* comes to Denver. The venue is booked, and it is gorgeous. Colorado will put on her summer best; blue skies, fabulous views, warm days and crisp evenings for our pleasure. Join us for dozens of informative seminars, uplifting and entertaining speakers, our magical meals together, exhibits, the Fashion Show, shopping opportunities and so much more.

We are working hard to be sure registration runs accurately and efficiently. If you are fairly tech-savvy and want to help, Harriette Roadman, our crackerjack Registrar can probably put you to work!



Thanks to Marg Coe, we have our Rocky Mountain High Seminars logo.

We have extended the date for receipt of seminar proposals. We know the world has been crazy and wanted to be sure to give you plenty of time. It's not too late to write up that cool idea you have and get it to Jennifer Moore and Virginia Lee! Information about submitting a proposal can be found on the [CW website](https://www.complex-weavers.org).

Jami Johnson has been in charge of door prizes and done an amazing job, but she has stepped up to coordinate the *Complexity* exhibit. They are big shoes to fill, but I'm pretty sure she is having fun and will do a great job.

We are looking for people to take on the role of chair for a few committees. We need someone to head up *In Memoriam*. It is a fascinating and fulfilling job to learn more about the wonderful members that we have lost in the past 2 years and help us honor them.

We may need someone head up the Poster Sessions, though Suzannah Day might do it again this year. Even if she does, I'm sure she'd love some help! The Fashion Show also needs a Chair and while it was my favorite job, I have been forbidden from taking on anything else. It really is fun!

[Continued page 3]

## Seminars 2026, continued

I am endlessly grateful for support from the Board and especially Elizabeth and to the team: Sandra Paddock, my much needed tech advisor, Jami Johnson for all her hard work on *Complexity*, Teresa Edmisten, Harriette Roadman, Paula Heller, Jennifer Moore, Virginia Lee, Patsy Krechel, Meg Wilson, Patrice George and so many more. We'd love for you to join us!

So be saving your nickels and dimes. Get those wonderful projects ready to show, either in *Complexity*, Off the Runway or the Fashion Show. Consider donating to the Silent Auction or making a Poster.

We'll have LOTS more information for you all in the next newsletter. Stay tuned!

Michele Belson  
CW Seminars 2026 Chair  
[seminars@complex-weavers.org](mailto:seminars@complex-weavers.org)



---

## COMPLEXITY 2026: *Innovations in Weaving*

It is with great pleasure that we announce *Complexity 2026* will be held at the Lakewood Cultural Center, 470 S Alison Pkwy, Lakewood, Colorado from May 30 to early August. Our show will open at the beginning of INSPIRE Arts Lakewood, the community arts festival, which runs from May 30 through July 3. The Center has free admission and attracts a lot of visitors during this annual Festival. The exhibit will be in one of the galleries and in the spacious lobby where everyone entering the building for art classes and theater will see our work! We will be encouraging artists to have their work for sale — and to sweeten our request, the Center will take only a 15% commission!

We are also excited to announce our three jurors for *Complexity 2026*: Lynn Smetko, Laurie Carlson Steger, and Pauline Verbeek. Many of you know Lynn and Laurie from their long involvement with Complex Weavers; teaching, social media, and weavings which have been in previous *Complexity* exhibits. Pauline may not be as familiar, but her weaving experience is extensive — and she is the Chair of the Fiber Department at Kansas City Art Institute. We feel these three artists and teachers will offer deep experience with weaving in all its forms. This newsletter features a profile of Lynn Smetko. Profiles of Laurie Carlson Steger and Pauline Verbeek will follow in future newsletters.

We're working on the Prospectus which will hopefully be posted on the Complex Weavers website in early to mid June. The main change from *Complexity 2024* is the submitted work's exposure to the public before submission. Images that show the piece as a work in progress, but not in its entirety, can be shared via social media, blogs, newsletters, or website. Full requirements will be included in the Prospectus. We will continue to subsidize postal fees from outside the United States to make entry fees more equitable for non-U.S. entrants. We have nine awards confirmed for *Complexity 2026*.

As always, we are looking for volunteers. In particular, to have the 15% commission, we will need to hang the show... ..and therefore we need a local team to do the work and have the joy of being the first to see the actual pieces to hang in our show. You will be the ones who get to touch the weavings and look at the back. What an opportunity! If interested, please contact me at [complexity@complex-weavers.org](mailto:complexity@complex-weavers.org).

I'm looking forward to seeing all your creative work when our entry window opens in November.

Jami Johnson  
Chair, *Complexity 2026*  
[complexity@complex-weavers.org](mailto:complexity@complex-weavers.org)

## Lynn Smetko - Complexity 2026 Juror

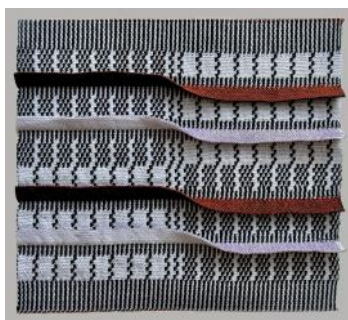
Lynn Smetko has extensive experience with both weaving and Complex Weavers. Through many years of developing her art and engaging with and learning from leaders in the field, she has acquired an in-depth technical knowledge of advanced weaving concepts. She has served on the CW Board as president, 1st vice president, secretary, and editor of the *Complex Weavers Journal*. As editor she worked closely with many authors on a wide variety of topics and was pivotal in transitioning the publication from black and white to color, something she felt essential for sharing all aspects of complex weaving. Lynn has presented weaving programs on design and structure at CW Seminars and for many state and local guilds. Her articles and works have appeared in the *CW Journal*, *Eight Shafts: Beyond the Beginning*, *Weavers*, and other publications.



Currently Lynn is concentrating on the design process and using photo-editing and weaving software to produce pictorial weaves. She is purposeful about every aspect of weave design, and by that process works to create a cohesive and compelling piece. She loves pushing the limits of her computer-assisted loom, and together they have created many award-winning works. Lynn resides in Southlake, Texas.



Be Still (my beating heart)



Both Sides Now - Pleats Sample



Ties that Bind

---

## Sandra Ogg Rude Grant Applications Signal Exciting Developments in Advanced Weaving

When the application period closed for CW's 2025 Sandra Ogg Rude Memorial Fund Grant, jurors were presented with 10 proposals that represented outstanding potential for continuing studies and teaching opportunities in advanced weaving techniques.

Applicants came from eight states in the U.S., plus France. Subjects for their studies and teaching projects ranged from weaving lampas on a dobby loom and teaching ondule weaving, to exploring themes of unmaking and destruction on a Jacquard loom and taking rosepath and Ms and Os in more complex directions.

The jurors, Mike Rude, Kathy Alexander and Marguerite Kaufman, awarded the full \$2,000 annual grant to one applicant who will be introduced at CW's Annual General Membership Meeting on July 26. The applicant's project is already underway and will be shared with the membership through an upcoming article in *Complex Weavers Journal*.

Thank you to everyone who submitted an application. The jurors appreciated hearing about your innovative proposals for contributing to the shared knowledge base of advanced weaving techniques.

Look for information about the 2026 SORMF Grant on the CW website next fall. The application period will open in December 2025. And please tune in to the Annual General Membership Meeting to learn more about the winning project.





## CW Leaders Champion Volunteering

Although doing your part to keep Complex Weavers operating and growing is an important reason for volunteering for a committee or even the Board, the personal benefits may not be as obvious in the job descriptions. For example, Amy Norris told us in the April CW Newsletter that her volunteer work for CW has made her more comfortable reaching out to CW members she doesn't know, "for example when I'm traveling," she added.

So when planning a trip to, say, Australia, check the membership directory to find CW members near where you are traveling. Because you've been connecting with CW members in your volunteer capacity, you are less daunted about reaching out, so you send them an email. Ask them what weaving or textile sites you should see while there and maybe even plan to meet up and chat about what you are both weaving. Those you contact may even know your name from seeing it in the Newsletter.

Thanks for that tip, Amy!

Wendy Morris, who lives in England, also told us she was "completely blown away" after reading in her first *CW Journal* that we are managed completely by volunteers. So when she was asked to run for 1st Vice President, she was OK being the "token international board member." However, she said she was quite wrong. "no-one in any CW role is a token, everyone has a full part to play."

As a CW volunteer, Wendy added she has learned a lot, not just about CW, but about "weaving, generosity of spirit and life in general" from her many talented and dedicated volunteer colleagues.

What fun it was learning more about two of the people working to make CW better for every member. Look for more of these volunteer profiles in upcoming Newsletters, and don't hesitate to get in touch with them to learn more about being a CW volunteer.

In the meantime, check the current list of volunteer opportunities below, and get in touch with me to let me know what skills and experience you'd like to put to work for Complex Weavers.

Karen Donde  
Immediate Past President 2024-2026  
Volunteer Coordinator  
[pastpresident@complex-weavers.org](mailto:pastpresident@complex-weavers.org)

## CW Volunteer Opportunities

### CW Advertising Chair

Angela Schneider needs to hand off her role managing advertising for the *CW Journal* and Newsletter, and CW needs a volunteer to take over her responsibilities. Angela can provide more details about the tasks involved, skills needed and time requirements. Reach her at: [complexweaversads@gmail.com](mailto:complexweaversads@gmail.com).

### CW Communication & Promotions Chair

Oversee CW's content calendar and promotions in coordination with other committee chairs to build CW's identity in the weaving community. Position requires good organizational and communication skills. Marketing experience is helpful, but not required.

### Complexity 2026 Committee

Get behind the scenes for the next Complexity juried exhibit by supporting 2026 Complexity Chair Jami Johnson. Contact her to see where help is needed. [complexity@complex-weavers.org](mailto:complexity@complex-weavers.org)

[Continued page 6]

## **Volunteer Opportunities, *continued***

### **CWOO/Weavers Handshake**

If you have skills in video editing, production, online education development, or project management, become part of CWOO. This global committee includes members from Europe, Australia and North America. The team is working to expand online educational opportunities for CW members worldwide. Contact [cwoo@complex-weavers.org](mailto:cwoo@complex-weavers.org).

### **CW Seminars 2026 Committee**

Now that Denver has been selected as the location of *Seminars 2026*, Chair Michele Belson is looking for committee volunteers. It is a great way to help shape the Seminars program and get to know the leaders! Contact Michele at [michele@lunaticfringeyarns.com](mailto:michele@lunaticfringeyarns.com).

For more information about any of these opportunities, or if you'd like to talk about other ways you could help, please reach out to me at the email below or via the contact form on CW's website.

Karen Donde  
CW Past President 2024-2026  
CW Volunteer Coordinator  
[pastpresident@complex-weavers.org](mailto:pastpresident@complex-weavers.org)

---

## **Articles of Incorporation and Bylaw Changes**

***We'll be asking you to vote on proposed changes to our Articles of Incorporation and our Bylaws at the Complex Weavers Annual General Membership Meeting on 26 July 2025 at 12:00pm EDT on Zoom.***

Our Articles of Incorporation (AOI) and our Bylaws are official documents which define us for the revenue and regulatory authorities and set out how we govern ourselves. When the Board considered last year whether we should change our charitable status we decided we should review both documents to ensure compliance with whichever option was chosen, and so the Bylaws, Policies & Procedures Committee was set up. That review is now complete and we will be putting the proposed changes to members for a vote at the Annual Meeting.

At least 45 days before the meeting, you'll receive formal notification and a link to the proposed changes on the website, but we thought we'd fill you in on the rationale behind the changes in advance. And when the time comes we'll be urging you to sign into the meeting – we really need to have a quorum of the membership at the meeting!

### **Articles of Incorporation**

Because the Board decided not to change our charitable status after all, no significant changes are necessary but we are suggesting only three changes. They are:

- Update a name and address — an administrative detail
- Update the non-discriminatory policy to the current norm (to include sexual orientation, gender identity, and family status).
- Insert a phrase in our Objects & Purposes to emphasize public outreach; we are mindful of the concern expressed by the Board's attorney that we might not be doing enough for non-members.

### **Bylaws**

It's normal for the Bylaws to need updating more than the AOI, either in response to changes in the world around us or where an operational detail has become impractical, and so the Bylaws Committee is recommending more changes to this document.

Most are minor:

- Some are linguistic changes, for example “chairman” to “chair”, or standardizing the way the Board of Directors is referred to.

[Continued on page 7]

## Articles of Incorporation and Bylaws Changes, continued

- Some clarify the current status quo where operational changes have taken place, for example membership ends on the date recorded in the membership database, not the day before the following *Journal* issue is due to go out.
- Some are updates to means of communication, for example “telephone conference” replaced by “conference call, video link”.
- In the same vein but slightly more substantive: paving the way for means of communication not yet in use by changing “by mail or electronically” to “in print or electronically or in another accessible information standard agreed by the Board”. Communication changes can happen very quickly, changes to the Bylaws much more slowly; twelve years ago CW had to continue mailing ballots for more than a year after the membership were requesting online voting.

There are two more substantive changes:

- The removal of the family membership category. We have only had two family memberships in the last fifteen years or so and none for the last five or six years.
- The removal of any mention of the Corporate Seal. No-one is aware of CW having one and we’re not required to have one.

The biggest change is in the section where the duties of the Officers are laid out. In the existing Bylaws, many of these are very task specific and as a result have become outdated. For example, the 1<sup>st</sup> VP used to be responsible for handling the CW Awards program but hasn’t done so for eight years now; the 2<sup>nd</sup> VP used to have no specific responsibilities but now has charge of the area liaisons.

We feel that the Bylaws should focus on the unchanging or seldom changing key responsibilities of the Officers and that specific tasks that might come and go or be reassigned to other people are better covered in Role Descriptions. Complex Weavers should not be in the position of breaching its Bylaws if, say, the Secretary were to decide to ask the Membership Chair to send “thank you, get well, sympathy and other correspondence” instead of doing it themselves!

Wendy Morris

Chair, Bylaws, Policies & Procedures Committee

---

## David van Buskirk —Solo Show

Congratulations to David van Buskirk on his solo show titled "Väft" ["Woven" in English] at Sweden's Handarbetes Vänner Gallery in Stockholm. The show ran from March 6 to May 3, 2025. David received the first grant from the Sandra Rude Memorial Fund. David’s studies at the DWL AIR Praxis Fiber Workshop in Cleveland, Ohio to develop some of the jacquard work in the exhibit were funded in part by the grant.

David’s work can be viewed at his [website](#).



### Consider a Donation to CW

As you think about ways to contribute to Complex Weavers, donations are a way to help the organization. In addition to donating our time and skills, or general donations, there are seven [special funds](#) with specific purposes.

You can make a donation directly through the website via the [Donations page](#). Please consider a contribution to the fund of your choice to support the mission of CW and the many services provided to its members.

Thank you!

## Board Happenings May Board Meeting May 3 – 19, 2025

### **CW Governance Policies and Procedures Revision:**

The Board approved Governance-related Policies and Procedures covering bullying and harassment, conflict of interest, data protection and privacy, document retention, gift acceptance, and whistle-blower protection.

### **Articles of Incorporation and By Laws Revisions:**

The Board approved revised Articles of Incorporation and By Laws. These documents will be presented to the CW membership for approval at the Annual General Membership Meeting to be held July 26, 2025.

### **Complexity Eligibility:**

The Board approved a motion that CW include in the Complexity Policies and Procedures the statement that only CW members are eligible to submit work, but that anyone wishing to enter the exhibit may join CW and enter immediately.

### **Social Media Policy:**

The Board approved a motion to accept wording of a formal policy about the purpose of social media sites being for weaving and weaving-related commentary only and that the moderator will remove comments that do not apply to the subject of weaving. This policy will be posted on the CW Facebook and Instagram pages.

### **Study Group Notebooks:**

The Board approved a motion to put a hold on new Study Group material being sent to the CW Library for storage, as the Board continues to work out the logistics of implementing recommendations made by the Study Group Subcommittee.

### **CW Archives:**

The Board approved a motion that CW arrange to ship archive materials from Chris Jeryan's home to the CW Library, where the CW Librarian, other CW Board members and volunteers will take an inventory and recommend further actions.

Respectfully submitted by Janet Bealer, Secretary

## **Study Groups**

Interested in learning something new or connecting with others interested in the same weaving topic? Why not join a Study Group? See the CW [website](#) for more information about each group and whom to contact if you have questions or are interested in joining. If there is an area of study that you are interested in and no group listed below, please contact Sara Nordling, [Study Group Chair](#), for more information.

### **Current Study Groups**

Archaeological Textiles	Kumihimo
Bateman Weaves	Ondulé Textiles ~ Weaving with a Fan Reed
Beyond Plain Weave Garments	Oscar Beriau Sampling Group
Dimensional Texture	Preserving Our Past; Index and Scrapbook of 20th Century Handweavers
Double Weave	Sample Exchange the Old-Fashioned Way
Drawloom Explorations	Sixteens
Early Weaving Books and Manuscripts	Structure
Equipment Compendium (aka the Loom Geeks)	Tied Weaves and Beyond
Fine Threads	Twenty four, More or Less
Inquisitive Drawloom Weavers	



# Classifieds

## **Supplementary Warp Patterning: Turned Drafts, Embellishments & Motifs by Barbara J. Walker**

This comprehensive book by the authority on supplementary warp weaving will teach you that two (or more) warps are, indeed, better than one. Chapters on methods, design, and warping are included. \$37 USD plus shipping.

[www.lulu.com](http://www.lulu.com). Enter the book title.

## **Spinning Wheel Sleuth: Hand Loom Supplement #24. \$10**

Pennsylvania-German Cantilevered Looms; My Second Weaver Rose Loom; Two Distinctive Band Looms; A Two-Person Tape Loom; Restoring a Tape Loom With a Floating Heddle Hand Loom Supplements #1-10 on flash drive, \$15. By check to The Spinning Wheel Sleuth, PO Box 422, Andover, MA 01810; or via PayPal at [www.spwhsl.com](http://www.spwhsl.com).

---

## **Your Complex Weavers Journal:**

Share Your Weaving Knowledge and Experiences

Inside every Complex Weavers member is a story and wealth of knowledge! Sharing our experience and knowledge is the heart of CW and our *Journal*. Unlike other publications, we do not solicit articles from people outside our organization. As we strive to “share information and encourage interests,” our *CW Journal* welcomes articles from individuals as well as study group members. If you have something to share, contact us. We will make it easy for you!

**Writer's Guidelines** are available on the [CW website](http://www.complex-weavers.org), or by sending a request to the Editor. Material for the *Journal* is given priority according to the date received. Late or lengthy submissions are subject to available space.

**Classified and commercial advertisements** should be sent to the [Advertising Manager](mailto:AdvertisingManager@complex-weavers.org).

**Address changes** may be made by logging on to the website and updating your member profile or by contacting the [Membership Chair](mailto:MembershipChair@complex-weavers.org).

If you do not receive your *Journal* when you think you should, please sign in to the [Membership Directory](http://www.complex-weavers.org) on the CW website to confirm that your membership and contact information are current.

## **202565 Publication Schedule:**

October 2025: Deadline August 15, 2025

February 2026: Deadline November 30, 2025

June 2026: Deadline April 15, 2026

*Journal* Editor: Ruth MacGregor at [CWJournalEditorRM@gmail.com](mailto:CWJournalEditorRM@gmail.com)

Administrative Editor: Ally Kraus at [CWJournalAdmEditor@gmail.com](mailto:CWJournalAdmEditor@gmail.com)

Newsletter Editor: Ingrid Knox at [newsletter@complex-weavers.org](mailto:newsletter@complex-weavers.org)

Editing Team varies from issue to issue, but includes: Alison Giachetti, Prue Hill, Bobbie Irwin, Mimi Smith, Lynn Smetko and Janet Stollnitz

Indexing: Pat Stewart

Advertising: Angela Schneider at [ComplexWeaversAds@gmail.com](mailto:ComplexWeaversAds@gmail.com)

Membership/Mailing List: Amy Norris at [CWMembership@amyfibre.com](mailto:CWMembership@amyfibre.com)

Printing and Distribution: Lynn Smetko at [CWPresidentLFS@gmail.com](mailto:CWPresidentLFS@gmail.com)

Your *Journal* staff, all volunteers, are ready and eager to help you with your contribution.