

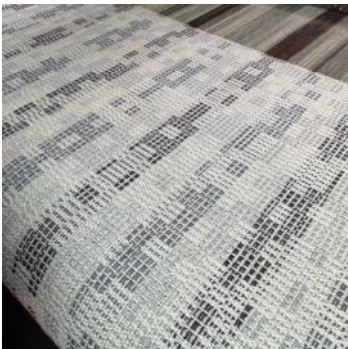
CW Asset—Our Volunteers

Dates to Remember

May 16, 2025
 Deadline for
 Seminars 2026
 Proposals.
 Details on the
[CW Website](#)

June 12-14, 2026
 CW Seminars 2026
 Westminster, Colorado

June 2026
 Complexity 2026



Amy Norris—Current Project

Complex Weavers is run almost entirely with volunteers – everything from organizing Seminars and the Complexity exhibit to running the Study Groups and producing the Journal. We are hoping that we can find and attract more members to help keep Complex Weavers going.

To offer inspiration, we are highlighting members who have volunteered for CW. For this newsletter issue, we are putting the spotlight on Amy Norris and Wendy Morris, both long time volunteers.

How have you volunteered for CW, what jobs have you held? -

Goodness! This took some memory work. Nominating Committee, Vice President, President (and Past President), Advertising, Merchandise, and Membership, plus either Registrar or assisting the Registrar for multiple Seminars.



Amy Norris

Why did you get involved in the first place and why did you continue? My initial reason was to give back to the organization that I have benefited so much from, but I continue because I believe in the importance of a place for weavers to continue to learn and grow, as far as they want, with support and opportunities for community.

My initial reason was to give back to the organization that I have benefited so much from, but I continue because I believe in the importance of a place for weavers to continue to learn and grow, as far as they want, with support and opportunities for community.

How has volunteering for CW benefited you personally?

I love that my volunteer roles have kept me in personal contact with so many members. It also means I feel more comfortable reaching out to CW members that I don't already know, for example when I'm traveling.

What advice do you have for members about taking on volunteer CW roles? *Start small. There are plenty of little jobs that are available and that way, you can get your feet wet without overcommitting.*

Do you have a favorite color? *ALL of them!*

What is your favorite fiber to weave? *I'm probably most comfortable with cotton given the hundreds of dish towels (aka full size samples) I've woven, but I think my favorite is probably either Tencel or silk because of the richness of color that's possible.*

Do you have a weaving challenge you are still interested in investigating? *I'm forever playing with interleaved threadings, parallel and non parallel, although I admit to being easily distracted by another structure when I see something interesting.*

Notes from a Reluctant Seminar Chair—CW Seminars 2026

We are making progress planning your Complex Weavers Seminars 2026 for next summer.

The incredible team of Virginia Lee and Jennifer Moore have the final version of the Request for Proposals for Seminar Leaders finished and it's posted on the [CW website](#). So send in your fantastic ideas for Seminars 2026 and let's make this another great event. Share this with all your amazing weaving friends, to either consider coming to Seminars or leading one with a cool new topic. If you have questions email Virginia and Jennifer at cws25vl@gmail.com.

The wonderful Jami Johnson, with invaluable help from Susan DuBois and Patsy Krechel, has secured a venue for the Complexity exhibit. There are other articles about Complexity in this newsletter, just know we have a lovely location to show off your work. Application for Complexity will also be on the website soon.

There's still plenty of time to join the incredible team of volunteers for Seminars 2026. The best way to get the experience you want is to help make it happen. Email me at seminars@complex-weavers.org and we will find the best fit for you.

Back to work planning a fun, informative, Seminars 2026!

Michele

CW Seminars 2026 Chair

seminars@complex-weavers.org

Update on Complexity Progress

This is the time in the *Complexity* cycle when it appears at first glance that not much is happening but out of view a lot is going on! Top of my list right now is the Venue and the Prospectus. We are working out the details on a great site for our venue. It will be one that serves our needs beautifully and will show our work to the Denver community. The Prospectus is also in progress, and should be announced in the next Newsletter. When complete, it will be posted on the *Complexity* portal of the Complex Weavers website.

If you have any burning questions about this that can't wait, please reach out to me and I will do my best to answer:

Jami Johnson

Complexity Chair

complexity@complex-weavers.org

My Experience Volunteering in Complex Weavers

Wendy Morris

How have you volunteered for CW, what jobs have you held? *I've volunteered (or sometimes, more accurately, been volunteered!) in several capacities: 1st vice president, president, co-leader of the Dimensional Texture study group and before that the Collapse Pleat Bump study group, and chair of the Bylaws, Policies & Procedures committee.*

Why did you get involved in the first place and why did you continue?

I'd only been weaving for three years when I joined Complex Weavers but even though I was such an inexperienced weaver I felt immediately this was "my tribe". Everyone I came into contact with was so friendly and willing to share their knowledge and experience, and I remember being completely blown away when I read in my first copy of the CW Journal that absolutely everything in CW was done by volunteers. So when the Nominating Committee approached me to see if I'd be willing to stand as 1st Vice President, how could I say no?



Continued on page 3

CW Volunteer Spotlight — Wendy Morris, continued

Complex Weavers was then, as it is now, an international organization, and I imagined my role was to be the token international board member. I didn't have a problem with that – with a large majority of our members being American citizens and “international members” often being thought of as Canadian, it seemed quite important for the rest of the world to be represented! But I was quite wrong, no-one in any CW role is a token, everyone has a full part to play, and I was asked to stand as President after my 1st VP term, which was a huge honor and vote of confidence.

How has volunteering for CW benefited you personally? *I can't tell you how much I learned – about CW, weaving, generosity of spirit, and life in general - and how many wonderful, talented and dedicated colleagues I was privileged to work with during my terms on the Board. It's our members who make Complex Weavers a special organization, and the two best ways to get to know other members are by getting involved in some way in the running of CW and by joining a study group. My involvement with the Dimensional Texture study group gives me the chance not just to feed my passion for weaving lumps and pleats and bumps but to be constantly learning and getting inspiration from a highly creative set of knowledgeable weavers.*



What advice do you have for members about taking on volunteer CW roles? *Don't think of it so much as volunteering as simply playing your part in keeping CW going. By my reckoning there are around 100 members doing this at any one time, and that's not even counting those who volunteer to help at CW Seminars. Please don't let it be the same 100 people all the time; we all need to make a contribution. By definition everyone in CW is a competent, intelligent person with many capabilities!*

Do you have a favorite color? *Looking at my stash I think I'd have to say the blues have it! But magenta and purple tie for second place.*

What is your favorite fiber to weave with? *Definitely silk, but often in combination with wool or maybe a stretch viscose to get exciting dimensional effects.*

Do you have a weaving challenge you are still interested in investigating? *Do we ever run out of weaving challenges? I love working with pleats and there's so much more I want to explore – different structures for creating them, different effects by varying their size and density, different materials, different ways to use them for shaping. Endless fun!*

Pictured above is a sample of the yardage on Wendy's loom at the moment, before and after wet finishing. The main warp and weft are 60/2 nm silk; the black grid is lambswool which has fulled just as she wanted.

In Search of Information about Allen Fannin

Olivia Comstock, PhD Candidate at the University of Minnesota, is writing a dissertation about hand spinner and weaver Allen Fannin (1939-2004). For her research, she is looking for weavers who may have known him or known of him to speak with over email, phone call, or Zoom. Please reach out to her directly at comst099@umn.edu if you have anything to share.

A little information about Allen Fannin to help make some connections: Allen Fannin and Dorothy Fannin started weaving in the 1960s in their Brooklyn apartment. His piece "Stairwell" appeared in the *Objects: USA* (1968) catalogue and exhibition. In the 1970s until the late 1980s, they operated Fannin Spinners and Weavers in Westdale, NY. He also coordinated a summer session in 1974 at Haystack Mountain School of Crafts for African American students and taught at Syracuse University later in his life. He authored two books: *Handspinning: Art and Technique* (1971) and *Handloom Weaving Technology* (1979) and published several articles in weaving, spinning, and craft magazines over the years.

Complexity 2026—Are You Ready to Participate?

A year from now, the portal to enter *Complexity 2026* will be closed...imagine how you'd feel if you had submitted something and were waiting for the juror's decision - excited, nervous, energized by something you created? I was there just over a year ago when I entered *Complexity 2024*.

This was my first entry into a blind judging show. I was both nervous and excited. And also doubtful of the value of what I had created. I hadn't intended to enter my towel but as I was nearing the end of a long warp, and wanted to try something different. So I went to the computer and just started playing with weft ideas and colors. When it came off the loom, my first thought was Complexity?? Did I dare? Had anyone entered a towel before? Would the judges just laugh at it?

But I decided to be brave – and didn't tell anyone I had entered! Then I put it out of my mind, well, sort of. When Notification Day approached, I got increasingly nervous...looking every day for an email from Linda Schultz (Chair of Complexity 2024). And when it arrived I sat down, breathed deeply, and opened the email. Yes! I was very excited and so pleased to have been accepted. And then to see it hung...I got nervous again! But when I finally made my way around the show (I was *that* nervous that I didn't go over right away!), it was wonderful to hear other people's reaction to it – and then to see that someone purchased it, well, I was blown away!

Be brave and adventurous, be creative and explore the wonderful and complex ways we can create cloth!

Jami Johnson, Chair, Complexity 2024



Free Opportunities in Student Craft at Berea College

The Student Craft program employs about 100 Berea College students who engage in the design and production of handmade goods and educational programming in 5 Craft studios: Weaving, Woodcraft, Broomcraft, Ceramics, and Outreach.
www.bcstudentcraft.com.

The Fellowship Program

The Student Craft Fellowship Program is a **paid 3-month opportunity** that includes housing at the “Craft House” Berea. For approximately 80 percent of their time, fellows work alongside Berea students supporting the education, production and design needs of the program while developing skills and learning about work in a craft production setting. For the remaining 20 percent of their time, fellows are focused on their individual work creating a capstone project that will be exhibited alongside work created by full-time Craft staff. Contact Director of Fellowships Hunter Elliott for more information. Elliotth2@berea.edu

Visiting Artist Residency

In the fall of 2023 Student Craft launched its Visiting Artist Residency program thanks to generous funding from the Maxwell/Hanrahan Foundation. This program provides a paid residency experience for artists at the Student Craft studios here in Berea, KY. In addition to an **honorarium, shared housing is provided** in the “Craft House” adjacent to Berea's campus. Contact the leaders of the individual studios that you wish to inquire about.

Erin R. Miller Director of Weaving, Assistant Creative Director of Student Craft, millere2@berea.edu

Rob Spiece, Director of Woodcraft and the Pine Craft School of Woodworking, spiecer@berea.edu

Amanda Lee Lazorchack, Director of Broomcraft, lazorchacka@berea.edu

Philip Wiggs, Director of Ceramics, wiggsp@berea.edu

Steve Davis-Rosenbaum, Director of Craft Outreach, davisrosenbaums@berea.edu

Continued page 5

Are you on social media? Look for us on [Facebook](#) and [Instagram](#) (@complex_weavers).

Berea College Opportunities, continued

TC2 Weaving Residency

Softly launched in the fall of 2024, the TC2 Residency prioritizes artists from underserved identities, backgrounds, and communities with financial need and is designed for those who are independent on the TC2 loom and do not require any assistance warping, designing files, weaving, or troubleshooting. The 2-week residency offers **free access to our TC2 loom**, 24/7 access to the Weaving studio, and free housing in the “Craft House”. Our loom is 2 modules wide and 3 modules deep with a single back beam. Contact Erin R. Miller for more information. Millere2@bereda.edu

Other informal opportunities

Student Craft always welcomes visits from artists and scholars who are interested in visiting Berea, learning about the Student Craft program, engaging with research in our archives and special collections, visiting the Doris Ullmann Galleries and engaging with their collection, spending time in the college forest, etc. Please reach out to Associate Vice President of Student Craft Aaron Beale for inquiries. Bealeaa@bereda.edu

CW Volunteer Opportunities

CW Advertising Chair

Angela Schneider needs to hand off her role managing advertising for the *CW Journal* and Newsletter, and CW needs a volunteer to take over her responsibilities. Angela can provide more details about the tasks involved, skills needed and time requirements. Reach her at: complexweaversads@gmail.com.

CW Communication & Promotions Chair

Oversee CW’s content calendar and promotions in coordination with other committee chairs to build CW’s identity in the weaving community. Position requires good organizational and communication skills. Marketing experience is helpful, but not required.

Complexity 2026 Committee

Get behind the scenes for the next Complexity juried exhibit by supporting 2026 Complexity Chair Jami Johnson. Contact her to see where help is needed. complexity@complex-weavers.org

CWOO/Weavers Handshake

If you have skills in video editing, production, online education development, or project management, become part of CWOO. This global committee includes members from Europe, Australia and North America. The team is working to expand online educational opportunities for CW members worldwide. Contact cwoo@complex-weavers.org.

CW Seminars 2026 Committee

Now that Denver has been selected as the location of *Seminars 2026*, Chair Michele Belson is looking for committee volunteers. Most pressing is a leader selection committee. It is a great way to help shape the Seminars program and get to know the leaders! Contact Michele at seminars@complex-weavers.org.

For more information about any of these opportunities, or if you’d like to talk about other ways you could help, please reach out to me at the email below or via the contact form on CW’s website.

Karen Donde

CW Past President 2024-2026

CW Volunteer Coordinator

pastpresident@complex-weavers.org

Weaving Instructor Opportunity

OGICHI DAÄ KWE

Weaving Instructor Job Description



Position: Weaving Instructor

Status: Full Time, Seasonal (June 9-August 12, 2025)

Location: International Falls, Minnesota

Salary: Commensurate with experience, room, board, and all meals included

Position Contact: Grace Gardner, assistant director, grace@ogichi.org

Ogichi Daä Kwe Overview & Mission

With a name meaning "strong spirited women" in Ojibwe, Ogichi Daä Kwe is a one-of-a-kind wilderness camp for girls located in northern Minnesota. Established in 2004, Ogichi's program offers countless opportunities for growth through challenging canoe and backpacking trips, empowering activities, a wide-range of in-camp classes, and a healthy lifestyle. Undistracted by technology, unburdened by social pressures, and encouraged by passionate role models, the young women who come to Ogichi Daä Kwe discover a stronger version of themselves.

Our mission is to empower the strong spirits of young women through wilderness trips and lifelong community. We practice gratitude, value differences, and promote self-confidence.

Job Description & Opportunities

The weaving instructor is responsible for teaching 3 hours of morning classes each day at camp. In addition to class instruction, the weaving instructor is responsible for setting up and maintaining 5 floor looms and 5 table looms, ordering supplies, and maintaining a program inventory. The weaving instructor can expect to teach approximately 5 campers per day and is responsible for "finishing" weaving projects like pillow cases and bags using hand sewing or a sewing machine.

Individuals interested in working for Ogichi Daä Kwe will have the opportunity to be a part of an amazing community in the Northwoods of Minnesota, gaining experience in weaving instruction, loom maintenance, and classroom management. This role provides the opportunity to work 1:1 and in small groups with campers ages 8-18 teaching them how to weave textiles in a friendly and fun camp environment. The weaver also has the opportunity to be a part of our summer program described in more detail at www.ogichi.org.

In Camp Responsibilities

- Prepare a supply list and requested budget for program supplies, to be submitted for approval and ordering prior to the start of pre-season.
- Facilitate department preparation during pre-season staff training, including organizing the department area and arranging for any necessary repairs.
- Implement existing standards and curriculum for the department. Add new lessons to the curriculum, if necessary.

- Complete a weekly (or more frequent, if necessary) supply check and coordinate any resupply orders with the approval of the in-camp program manager.
- Facilitate age-appropriate, engaging activities in daily morning classes.
- Complete a department inventory after the summer to be stored in the Shared Drive, including a list of items to be ordered for the department for the following summer.
- Adhere to all camp policies and safety protocols and ensure that campers do the same.

Required Qualifications

- At least 18 years old
- Self-motivated, able to work independently and with a team
- Good organizational skills and ability to handle multiple tasks and roles patiently and professionally
- Ability to live in a summer camp setting and work irregular hours
- Ability to leave personal technology in designated areas, only to use at certain times or during an emergency
- Ability to handle the pressures associated with working/living with coworkers and children in a small community
- Previous weaving experience and knowledge of loom set-up and maintenance.

Physical Requirements

- Physically strenuous activity may include walking on challenging/uneven terrain with equipment
- Ability to work for extended periods of time standing.

Preferred Experience & Credentials

- Prior teaching experience
- Experience working with children

Compensation & Time Off

Staff are paid biweekly throughout the summer season. Compensation includes: a) base salary, b) air travel to and from camp paid for by Ogichi Daä Kwe [OR] \$400 travel stipend for staff who choose to drive their own vehicle, c) room and board, all meals included.

Life at camp is action-packed and we want all of our staff to be as much a part of it as possible! Activities that require a staff presence vary, and may occur between 7:30 am-8:30 pm, 7 days a week while campers are in-camp. Every staff person will have assigned time off throughout the week when campers are in-camp. The wilderness trips provide substantial downtime for the weaving instructor, and range from 3 to 21 days.

To learn more and apply:

Complete our [staff inquiry form](#) to set up an introductory call, or contact Grace Gardner, assistant director, at grace@ogichi.org or 513-967-7243.

Learn more about Ogichi Daä Kwe at www.ogichi.org.