

June 2024 | Number 142

## President's Letter

### In this issue

President's Letter

2024 CW Election

Sandra Hutton  
Fund

Seminars 2024

Complexity 2024

In Memoriam

CWOO Update

Annual Meeting

CW Nonprofit  
Status

Library Storage

Study Group  
News

Board Happenings

Classifieds

Journal Schedule

### Swept Up in a Complex Weavers Whirlwind

When I was still a kid, Sunday evenings usually transformed my mother into a whirling dervish, feverishly trying to get weekend chores done in preparation for school and work Monday morning. Invariably my brothers, sister and I would get swept into Mom's frenzied orbit, tasked with mopping floors, folding laundry, or some such, when all we wanted to do was watch the *Wonderful World of Disney*, in living color!

I suspect the other Complex Weavers Directors and Committee Chairs may have had a similar, or even more creative, description of me as we worked our way through my final Board meeting as CW President. To offer some insight into the customary proceedings, I opened that meeting with a two-hour(ish) Zoom meeting on April 20 to take care of routine votes and the most timely issues. It continued with ongoing emails via our [Groups.io](https://groups.io) account and finally adjourned May 21.

Yes, there are inefficiencies, but the email method generally works OK given the time-zones that separate us. It doesn't usually take this long, but it has been an unusual meeting with several BIG issues landing at the same time. One agenda item chalked up 95 messages and another 92. I'll let you guess which ones.

I didn't intend to turn into "Sunday-night Mom," but we've been dealing with some of these issues since I became President two years ago. I really hoped to get the figurative floors cleaned and laundry done before turning over the gavel to our next President, Elizabeth Bryan, who has, by the way, been listening in to the conversation as part of her orientation. Thank you to all Board members for their patience and continued commitment to Complex Weavers, even in the face of occasional "mega-meetings."

Now that Monday morning has metaphorically dawned, the issue regarding CW's current non-profit status shared via the recent member poll remains undecided. On page 7 of this newsletter, you will find an article that we hope explains how the Board was presented with this challenge, steps we took to educate ourselves and address it, and how we arrived at the choices presented to you in the poll. The discussion continues.

For now, though, I'd like to use the rest of my final President's Message to highlight exciting programs coming this summer.

*Continued page 2*

## President's Letter, continued

*CW Seminars 2024* starts July 6 in Wichita, KS, with a special evening reception for CW members at the opening of *Complexity 2024*, our biennial juried member exhibit. The next three days are filled with informative, engaging, educational sessions presented by an exciting slate of Leaders. As always, sessions are interspersed with shared meals, speakers, CW's annual meeting and activities designed to help us get better acquainted and have some fun.

Haven't registered yet? Here's an exciting opportunity to consider. While the full event remains the best deal, you may now register by the session or by the day. This is the Seminars 2024 Committee's very creative solution for filling empty seats to better cover expenses and introduce people to Complex Weavers.

While you are in Wichita for *CW Seminars* or HGA's *Convergence*, the *Complexity 2024* exhibition, which debuts July 6 at Mark Arts School of Creativity Gallery, will be open Tuesday-Saturday, 10 am - 5 pm, through Aug. 17. Can't get to Wichita? Look for the online *Complexity* exhibit on the CW website. The planning committee has promised the exciting work created by fellow CW members will spark our curiosity and inspire our continuing pursuit of innovation. Congratulations to the artists whose work was selected.

Coming this fall is the launch of what our CW Online Offerings committee has named, *The Weavers' Handshake* online learning classroom. (You are going to love the logo.) The first installment features recordings of some of the sessions offered at *Seminars 2024* presented on-demand. Those registered for the full Seminars event will be able to view recordings of all available sessions at no additional cost. Others can purchase passes to watch some or all of the recorded sessions.

While this is my last President's Message, I remain on duty as CW President until the CW Annual Meeting on July 9... with a little bit of "laundry" waiting to be folded and put away. Please get in touch if you'd like to chat or get more involved.

I'll see you at Seminars!

Karen Donde  
CW President, 2022-2024  
[cwpresident22khd@gmail.com](mailto:cwpresident22khd@gmail.com)

---

## 2024 Complex Weavers Election Results

The Election Results are here! Many congratulations to our newly elected officers: Elizabeth Bryan, President and Eileen Driscoll, 1st Vice-President.

The CW Board would like to express appreciation to the 2024 Nominating Committee of Janet Stollnitz, US, Lois Wyndham, Canada, and Belinda Rosee, Australia, for recruiting an impressive slate of candidates for CW leadership roles. We thank them for their work.



Elizabeth Bryan



Eileen Driscoll

## **Incredible News!**

### Sandra Hutton Award for Excellence in Complex Weaving By Susan Bowman

As of this writing, \$3,575 has been donated toward CW's goal of raising \$5,000 for the Sandra Hutton Award for Excellence in Complex Weaving. As you will recall, the inaugural presentation of this award will be at *Complexity 2024*, with plans to continue it into the future.



Your committee working on raising funds for this award (Ginger Kaldenbach, Lynn Smetko, Susan Bowman) recently received the incredible news that Ray Hutton has offered a very generous match of \$5,000 if CW reaches our \$5,000 goal by November 1, 2024. What an amazing offer and, if met, will ensure that this prestigious award can be presented for many years to come!

What does this mean and how can you help? It means that at least \$1,425 must be raised by November 1<sup>st</sup> in order for CW to receive the matching gift. Won't you consider being part of this important project?

#### **Donation instructions:**

Please go to the CW website's "Donate" page, [www.complex-weavers.org/donate-to-cw/](http://www.complex-weavers.org/donate-to-cw/)

Type in your donation **amount** (in US dollars)

Click on **in memory** button and type in **Sandra Hutton** (field appears after "in memory" is clicked)

Click on dropdown menu for **Designation** and select **Sandra Hutton Memorial Complexity Award Fund**

Fill in your personal information and payment method

Note – If you choose to mail a check, please note what it is for and send it to CW's Treasurer: Vila Cox at 2668 N Westminster Pl, Boise, ID 83704-5875.



#### **Notes from a Reluctant Seminars Chair** **SEMINARS IS RIGHT AROUND THE CORNER!**

Lots of planning, working, Zoom meetings and phone calls are happening and Complex Weavers *Seminars 2024* is coming together. And there's lots of exciting news!

Most exciting is the availability of a new option to attend parts of *Seminars* if the full conference doesn't work for you, and to invite your friends who aren't yet CW members to join you. We know how busy everyone is and since there are some unfilled seats in some fantastic Seminars we are thrilled to offer more flexible plans for attending. Come for the full day on Sunday: enjoy a breakfast buffet with all the amazing CW folks, attend 2 Seminars, have a buffet lunch and help us honor all the CW members we have lost since 2018, then join us for a buffet dinner, Poster Session, the Off the Runway Exhibit and the FABULOUS FASHION SHOW. Or come on Monday and get 3 meals, 2 seminars, inspiring presentations by Margaret Roach Wheeler at lunch and the Keynote Address by Rebecca Winter after dinner and shop the incomparable CW MarketPlace. The Half Day Package on Tuesday includes breakfast and lunch, an amazing Seminar and our fun closing ceremony. And if those are too much, you can sign up for a single seminars (or 2!). There are so many ways to enjoy CW Seminars! We'd love for you to join us.

We are super excited to announce Margaret Roach Wheeler will be giving a presentation Monday, July 8. Margaret is a Chickasaw/Choctaw weaver and Native American fashion designer from nearby Sulphur, Oklahoma. Learn a bit more about her one her website: <https://margaretroachwheeler.art/>. This presentation is not to be missed!



Margaret Roach Wheeler

All the committees are working hard. Look for notes from them elsewhere in this newsletter. Keep working on your entries for the Fashion Show and the Off the Runway exhibit. We want to see what you have been doing!

Continued page 4

## Seminars 2024, continued

To volunteer to help with any of the committees contact the Committee Chair.

Registration	Barbara Cabrol	<a href="mailto:cw24registrar@gmail.com">cw24registrar@gmail.com</a>
Seminar Leaders	Jenni Jimmerson	<a href="mailto:jennijnnotary@hotmail.com">jennijnnotary@hotmail.com</a>
	Sheri Ward	<a href="mailto:sheriward@icloud.com">sheriward@icloud.com</a>
Fashion Show	Mimi Anderson	<a href="mailto:mimi_anderson@mac.com">mimi_anderson@mac.com</a>
Off the Runway	Paula Heller	<a href="mailto:pheller@nettally.com">pheller@nettally.com</a>
Poster Sessions	Susannah Day	<a href="mailto:smisle@gmail.com">smisle@gmail.com</a>
In Memorial	Penny Peters	<a href="mailto:pennyjanepeters@gmail.com">pennyjanepeters@gmail.com</a>
MarketPlace	Susan DuBois	<a href="mailto:susan@treenwaysilks.com">susan@treenwaysilks.com</a>
Silent Auction	Meg Wilson	<a href="mailto:weavergamp@me.com">weavergamp@me.com</a>
	Patrice George	<a href="mailto:patriceny@earthlink.net">patriceny@earthlink.net</a>



Use this QR Code to connect to CW Seminars 2024 information

Or if you don't know who to contact, email me: [michele@lunaticfringeyarns.com](mailto:michele@lunaticfringeyarns.com).

Michele Belson  
CW Seminars 2024 Chair  
[michele@lunaticfringeyarns.com](mailto:michele@lunaticfringeyarns.com)

### Poster Session at Seminars 2024

It's time to start twisting arms for willing weavers to participate in this year's CW Seminars Poster Session! If you've never participated in a poster session before, let me fill you in. Posters are a great way to share a small topic that you've been thinking about or working on. Think of it as somewhere between showing a friend what you've been working on over lunch and writing up an article for The Journal.

Now for the details. Your poster can be any size, as long as it's large enough for us to read and small enough for you to travel with (if you need a number, aim for something in the 20" range). It can be on any complex weaving topic that you find interesting. The posters will be displayed on Sunday evening before dinner where we'll have a short intro and then you get to talk to other curious weavers about your poster topic.

If you're interested, committed, or have questions, email Susannah Day at [smisle@gmail.com](mailto:smisle@gmail.com)  
I look forward to seeing all of your incredible submissions between now and July!

Susannah Day  
Poster Session Chair

### CW Seminars Silent Auction

Silent Auction donations and help are needed! The Silent Auction will be open for two days during *Seminars 2024*, so there will be lots of time to bid on the treasures that await a new home. If you have any questions about how or what to donate, or if you'd like to help the team with the bidding frenzy at the *Seminars*, contact either of the chairs: Patrice George ([patriceny@earthlink.net](mailto:patriceny@earthlink.net)) or Meg Wilson ([weavergamp@me.com](mailto:weavergamp@me.com)). Remember that all donations to and sales from Silent Auction go to benefit the operating costs of *Complexity*!

Many thanks for your help!  
Patrice George  
Silent Auctions Co-chair

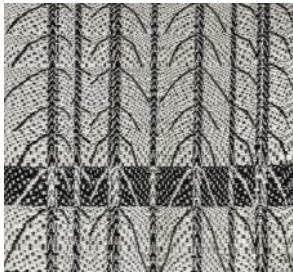
## Complexity 2024

We are counting down the days until the opening reception for *Complexity 2024* on Saturday, July 6 at Mark Arts. The Jurors selected thirty-seven wonderful pieces for inclusion in the exhibit. They also selected the works which would receive an award — a difficult job as many of the pieces were “award-worthy”. Many of the accepted artists, as well as some of the award winners, will be attending the opening reception. The winners will be announced at the opening reception and then added to the online exhibit and catalog.



Interlacements - Brenda Gibson

Teresa Edmiston and Ruth MacGregor have been working hard on preparing the online exhibit and catalog. We hope to have that ready prior to the opening reception, as it helps to be able to refer to the artists' descriptions and information while viewing the work. Ruth MacGregor has also created the beautiful ads that can be seen in Shuttle, Spindle and Dyeplot, as well as the *Complex Weavers Journal*.



Night and Day in the Snow  
Deborah Kaplan

And speaking of beautiful ads, Ruth has also designed a gorgeous oversized bookmark with a tear-off ballot for the People's Choice Award. All attendees to *Complex Weavers Seminars 2024* will receive a ballot. And the bookmark/ballot will also be included in the *Convergence Goody Bag*, so weavers attending *Convergence* may also vote. Ballots will be collected at Mark Arts, and voting will end at 4 pm on Saturday July 13 at which time the winner will be announced.

I'm excited to welcome a new member to the *Complexity 2024* team. We needed an experienced weaver to inspect each piece after the accepted works have been received at Mark Arts. Neva Thiessen, a *Complex Weavers* member from Wichita, has graciously agreed to do this for us.



Letting Go - Robert Breitzmann

I look forward to seeing you at *Complexity 2024*!

Linda Schultz  
Chair, *Complexity 2024*  
[flschultz@comcast.net](mailto:flschultz@comcast.net)

---

## In Memoriam Sigrid Piroch

Sigrid died peacefully on May 21st. Sigrid was an active member of and contributor to *Complex Weavers*. She was on the board of directors for *Complex Weavers* from 1986-1992 serving as Vice-President and President. She was founder and Chair of the Study Groups, and Swatch Exchange and Chaired the Fabric Analysis group from 1999-2005. She founded the NW Pennsylvania Spinners and Weavers Guild and served many other organizations.

Her weaving home was ARTS Studio in Emlenton, PA. where she taught, carried out research, published and wove. She published her first book in 1991, *Design Challenges: Works of Elmer Wallace Hickman.* Her best-known book is *The Magic of Handweaving: The Basics and Beyond*, published in 2005. Her work has been featured in over 70 publications.



Sigrid has taught classes globally with topics as varied as color and design, Slovak Folk Textiles, Coverlets, computer textile design, and fabric analysis. She embraced computer technology early on and was a beta tester for some of the first weaving software. She was one of the first weavers in the United States to own a TC-1 Jacquard loom for personal use. Sigrid exhibited widely, winning numerous awards.

## New Online Experience Following CW Seminars 2024

The Weavers' Handshake captures in a single gesture, the curiosity, regard and sense of community weavers feel when hands touch cloth envisaged and executed by another person. For the first time, 14 seminars will be recorded and prepared for on-demand viewing, so that you can watch the sessions from home this fall at a time that works for you. Passes for the online Complex Weavers Seminars will go on sale on July 6. For those attending *CW Seminars 2024* in person, those passes are included in your registration, so you can watch more than the five sessions you selected, or rewatch the ones you did.

We will be grouping a number of Seminars together on one pass, and you'll be able to access the content for a month. Each pass sold for online Complex Weavers Seminars will include a group Zoom session to meet other weavers watching the content online, our online version of the weavers' handshake. Make sure you are following us on Facebook and Instagram for profiles of the Seminars leaders participating and the broad range of exciting topics covered this year. It would be great if you could share these details with your weaving communities too.

Liz Croft  
CW Online Offerings (CWOO) Chair  
[cwo@complex-weavers.org](mailto:cwo@complex-weavers.org)

### **REMINDER! CW Annual Membership Meeting**

July 9, 2024  
12:30 pm CDT

Complex Weavers will hold its 2024 Annual Membership Meeting at 12:30 pm CDT, July 9, 2024, during the farewell lunch at *CW Seminars* in Wichita, KS. This will be an in-person presentation, though we are checking into the possibility of a live online and/or recorded meeting to be shared with members unable to attend. More info to come if we are able to work out details with the hotel AV contractors.

### **Consider a Donation to CW**

As you think about ways to contribute to Complex Weavers, donations are a way to help the organization. In addition to donating our time and skills, or general donations, there are five [special funds](#) with specific purposes. The five funds are:

[Complexity Fund](#)

Manuscript Recovery Fund

Friendship Fund

[Sandra Rude Memorial Fund for Advanced Learning](#)

Memorial Fund for Special Projects

You can make a donation directly through the website via the [Donations page](#).

Please consider a contribution to the fund of your choice to support the mission of CW and the many services provided to its members.

Thank you!

## **CW's Non-Profit Status: The Backstory**

Thank you to those who responded to the poll sent by the CW Board regarding Complex Weavers' IRS non-profit status. Thank you also to those who took time to send written comments to me directly. I have shared those with the CW leadership team.

We hope providing some additional background here will shed more light on the challenge we now face, and again ask for your input. If you haven't completed the poll yet, you may still do so. Click [HERE](#). We also invite others to send further comments via the contact form on the CW website [HERE](#).

### **Why did the CW Board pursue this investigation?**

In spring 2022, a CW member challenged that Complex Weavers was not operating in accordance with its 501(c)(3) non-profit designation, granted to CW in 1993. An informal query arranged with an attorney suggested CW operations may indeed have become misaligned with the IRS's latest views governing 501(c)(3) charities.

Concerned this challenge might trigger an IRS review, and having responsibility for keeping CW in regulatory compliance, the CW Board voted, at the 3rd quarter 2022 BOD meeting, to engage a legal firm experienced with non-profits and based in Colorado, where CW is incorporated, to advise on the issue.

### **How did the Board go about it?**

A long search by a special Board committee for the best suited attorney led to the Colorado Nonprofit Legal Center (CNLC). As a 501(c)(3) itself, providing legal advice for non-profits was CNLC's mission. Other firms contacted had only one or two attorneys focused on non-profits. The Board voted to engage CNLC at its spring 2023 Board meeting and paid a small retainer. The attorney at CNLC warned CW that the firm had quite a backlog, and it might be some time before they could get to our issues. The Board accepted these terms, but kept checking the status over several months.

In January 2024, the committee received notice from the attorney that CNLC was closing due to funding issues, but that she would fulfill the commitment for services made to CW. Formal communication about our legal questions began in February.

### **What was the result?**

The attorney requested a breakdown of all CW programs, funding sources for each and whether benefits are available to the public or members only. She delivered her formal advice in April, after research cited below.

In general, the attorney advised CW that to remain in alignment with current IRS guidelines for 501(c)(3) non profits, spending needs to focus more on public vs. member-only benefits in three key areas: The *CW Journal*, CW Seminars and CW's new online learning programs.

The best alternative, if CW prefers to continue its primarily members-only focus, is to change our non-profit status to a 501(c)(7), a designation under which the IRS lists "social clubs, organized for pleasure, recreation, and other similar purposes." Both designations offer tax exemptions. The biggest difference is that donations to a 501(c)(3) are tax deductible to the donor. For a 501(c)(7), they are not.

After the attorney's report, discussions continued a few weeks, with the Board probing further for clarification on various questions. In May, we believed we had enough information to be able to adequately explain the ramifications of this decision to the membership.

The poll sent May 17 also outlined how other differences between the two non-profit designations might affect CW. If you'd like to review those descriptions again, find that document [HERE](#).

Continued page 8

## CW's Non-profit Status, continued

### What happens now?

The poll remains open to collect more member feedback. If you haven't responded yet, here again is the [link to the poll](#). If anyone has more extensive comments, they may reach any Board member via the Contact page [HERE](#). The poll allows only one submission per person, but if you are rethinking your initial choice, return to the poll and click the "restart" link. This will erase your previous response so you may choose again.

The Board will not make a final decision until after the Annual General Meeting, to be held at *Seminars 2024*.

### Some notes you may find useful:

Public access to CW Study Group materials in the CW Library is another complicated issue discussed on page 8 in this Newsletter. Strictly speaking, if CW, as a 501(c)(3), spends money specifically on the collection, the notebooks should be available for public review under supervision, but not for borrowing. For a 501(c)(7), access can be members only.

After the poll was issued, another member reminded us about substantial discounts for technology and management tools available to 501(c)(3) non-profits, but not to 501(c)(7) non-profits, via Tech Soup, including Google for Non-profits, Zoom, QuickBooks, Adobe Suite, and other software, all of which CW is now using to make volunteers' jobs easier.

To review the breakdown we provided of all CW programs, funding sources for each and whether benefits are available to the public or members only, click [HERE](#).

It isn't quite apples-to-apples, but to help illustrate the role donations play in CW finances:

Current balance of CW restricted funds supported primarily by donations,  
including two large estate gifts: \$77,373  
2024 budgeted annual revenues from dues, merchandise and advertising: \$57,000

Resources regarding 501(c)(3) status and membership benefits cited by the CW attorney:

[26 CFR 1.501\(c\)\(3\)-1](#) – outlines rules related to operations and examples of educational entities.

[Technical Guide](#) – talks about charitable class. Identifies numerous revenue rulings that can help inform the lines.

[Revenue Ruling 66-179](#) – outlines the different exemptions available to clubs with emphasis under 501(c)(3) on the public nature of the activities. Also talks about how net earnings do not inure to members

Want to review CW's Articles of Incorporation, By-Laws or other important documents? Find them [HERE](#) on the CW website. You will need to login as a member.

---

## CW Library Storage of Study Group Materials

The CW Library's collection of Study Group materials remains one of CW's most highly valued educational resources. However, its continuing growth is presenting storage challenges. At the same time, CW is reviewing some operations that we've recently learned may be in conflict with current 501(c)(3) guidelines. Read more about this on page 7.

The CW Library and public access to its collection of published books and Study Group materials are among the items we're examining. You may recall that in 2022 the CW Library was moved to a new location with Leslie Fesperman at Yadkin Valley Fiber Center in Elkin, NC. The Library move has brought to light the issue of storage space and just how much shelving space is required to hold all the past Study Group materials. As time goes along and more Study Group materials arrive, the storage problem will become critical. We're faced with decisions regarding how we can feasibly handle new materials as they arrive.

Continued page 9



## CW Library Storage of Study Group Materials, continued

The Board is currently exploring a solution to this dilemma that can serve us long into the future. What this will look like has not been decided, but we want to make sure we don't lose the valuable resource created by our Study Groups. We equally want to be sure the privacy rights and wishes of members who have contributed in the past will continue to be honored (in other words, the physical samples currently in the Library will not be appearing online in the foreseeable future. That just won't happen.)

For now, the Board has approved rental of a secure, climate-controlled storage facility that is convenient to the CW Librarian for storage of existing Study Group materials. However, if CW chooses to make changes necessary to remain a 501(c)(3), that would mean increased accessibility of Study Group materials to non-members, for supervised review only within the Yadkin Valley Fiber Center, and not borrowing.

The Board has only begun to discuss other approaches to the problem. We want the solution to: serve Complex Weavers now and into the future; be archival; and not be a burden to the Librarian, the Study Groups, or our members.

We also hope to involve some Study Group participants in the discussion about how to manage the collection moving forward. If anybody has ideas, no matter how out of the box they may seem, please let me know.

Sara Nordling

[studycoordinator@complex-weavers.org](mailto:studycoordinator@complex-weavers.org)

### Fine Threads Study Group

The Fine Threads Study Group of Complex Weavers was founded over 30+ years ago. This active group is open to all levels of weavers and has no limits to the type of loom that is used to weave. Goals of the group have always been to challenge the weaver to not just weave with finer threads than what the weaver has typically woven with in the past, but to weave finer as in **better**. This could imply that one might work on bettering their selvages, or to weave with a more consistent beat. It could also imply that the weaver chooses a weave structure previously unfamiliar to them or to use a different fiber they have never used before. Thus, the Fine Threads Study Group has a diversity beyond its title that permits anyone who wants to challenge themselves in new ways to feel welcome.

Requirement of the group involves joining by the middle of December for the following year with an established membership fee. One sample set is due by the middle of May (usually around Mother's Day weekend) based on the number of members established at the end of the previous year. Communication is usually by email from the coordinator. We have recently included a Zoom meeting to discuss the year's samples and to visually meet the each other. This occurred in the middle of the year after samples were shipped to everyone (usually by July).

Woven samples should be large enough to show the design. A report including the draft, the sett, the fibers and source of the fibers, the issues that arose in the process of creating the piece such as problems, successes, problem solving, and recommendations should someone want to replicate the project. A signature prior to membership regarding sharing of proprietary ownership of the draft and or replication of the sample is required and allows the member to exclude replication should that be requested. We hope that those who think that having to weave with tiny threads is a requirement to join this group is alleviated by reading this! We look forward to your membership to our group as every year the samples are amazingly stimulating.

Karen Mallin

Coordinator, Fine Threads Study Group

## The Sixteens Study Group

I was surprised to learn that The Sixteens, as a study group, actually preceded the establishment of Complex Weavers. They had their first exchange in 1979! Marian Hoskinson organized the group and started the infamous sample exchange. To some, even to this day, the sample exchange is a high bar, but, in my opinion, worth it. They had 30 members and a waiting list. I am so jealous. From this group, Complex Weavers emerged, following Convergence.

In Phylis Alvic's words:

*Lots of ideas flew around the room and finally several of them solidified into plans. We needed a newsletter to communicate with one another and we needed to locate others to join with us. A membership list would contain not only how to reach us, but information on equipment and weaving specialties. By joining the group one agreed to be available to help others and answer questions. Ours would be an organization based on sharing information. Each of us personally knew of people who they thought would like joining a focused group of experienced weavers.*

Complex Weavers is, to this day, the umbrella organization which recognizes and explores the technical side of weaving, independent of the number of harnesses on your loom. The Sixteens, as a subset of CW members, explores specifically fabric that can only be woven on a sixteen harness loom. In other words, if you plug in a harness reducing program and find you only need 8 or 12 harnesses, you'll be busted! Or, more probably, be gently reminded that your draft can be reduced. There are members with many more harnesses, which allows them to make fancy tubular selvages with the main fabric using the eponymous 16. Other projects during the year can be woven on more or less. But, for the sample exchange, our goal is a clean and necessary 16.

Like opening holiday presents that no one ever sends any more, our Zoom meeting scheduled after the exchange is a kaleidoscope of samples, revealing the diversity possible within that year's chosen theme. The focus for 2024 is curves. It is likely that folks will use many different structures to achieve curves. I suspect the collection will serve as a wonderful reference and inspiration for future projects.

Respectfully submitted, Joan Pont, Chair, The Sixteens

---

## CW Volunteer Opportunities

### CW Marketing/Advertising Chair

Angela Schneider needs to hand off her role managing advertising for the CW Journal and Newsletter. The Board would like to expand this role to include marketing and promotion. This would include coordinating promotional bookmarks Ruth MacGregor has been producing and other opportunities to build CW's identity in the weaving community. If you have marketing or advertising expertise and would like to help, please contact Karen Donde: [president@complex-weavers.org](mailto:president@complex-weavers.org).

### Volunteer Coordinator

Build your personal CW network and connect with other members by helping match willing CW volunteers with opportunities suited to their skills and interests.

The CW Board seeks to add a Volunteer Coordinator to the leadership team to begin building a database of members willing to volunteer, the experience and skills they could bring to Complex Weavers and their time availability, whether on-going or short-term. The Volunteer Coordinator would also maintain a list of current volunteer opportunities and help identify potential candidates for open positions. Contact Karen Donde: [president@complex-weavers.org](mailto:president@complex-weavers.org).

### CWOO (Online Opportunities)

If you have skills in video editing, production, online education development, or project management, become part of CWOO. This exciting committee includes members from Europe, Australia and North America. The team is working to expand online educational opportunities for CW members worldwide.

Contact Liz Croft: [cwoo@complex-weavers.org](mailto:cwoo@complex-weavers.org)

## Board Happenings April Board Meeting April 20 – May 21, 2024

### **CW Non-Profit Status:**

The Board approved the sending of a poll to the CW membership explaining the differences between 501(c)(3) and 501(c)(7) non-profit status, and to learn members' preferences about CW's non-profit status.

### **Seminars 2024:**

The Board approved the Seminars 2024 Budget and Food and Beverage Budget. The Board also authorized Seminars 2024 Chair Michele Belson and her committee to open registration to the general public.

### **Seminars Online, Technical Assistance**

The Board approved a motion to provide up to 15 hours/month of paid technical assistance to assist Website Director Teresa Edmisten in technology development and activity, including Seminars Online implementation. The Board also authorized the the CW Online Opportunities Committee to promote sales of online Seminars 2024 to CW members and the general public.

### **Sandra Hutton Complexity Award Fund:**

The Board approved a motion that Silent Auction proceeds from the sale of "friends of Sandy" towels would go directly to the Sandra Hutton Complexity Award Fund.

### **CW Library Storage for Study Group Notebooks:**

The Board approved a motion to approve the purchase of shelves and the rental of a storage unit to store the Study Group Library materials in a secure storage unit in Elkin, NC, near the CW Library's current location.

### **CW Journal:**

The Board approved a motion that members begin receiving the latest *CW Journals* as soon as they are published, regardless of publication date, continuing until they fail to renew.

Respectfully submitted by Janet Bealer, Secretary



Try our QR Code to  
jump to the CW Website

**Treasurer's Report:** Quarterly Treasurer's Reports are available upon request.

# Classifieds

## **Spinning Wheel Sleuth: Hand Loom Supplement #24. \$10**

Pennsylvania-German Cantilevered Looms; My Second Weaver Rose Loom; Two Distinctive Band Looms; A Two-Person Tape Loom; Restoring a Tape Loom With a Floating Heddle  
Hand Loom Supplements #1-10 on flash drive, \$15. By check to  
The Spinning Wheel Sleuth, PO Box 422, Andover, MA 01810; or via PayPal at [www.spwhsl.com](http://www.spwhsl.com).

## **Supplementary Warp Patterning: Turned Drafts, Embellishments & Motifs by Barbara J. Walker**

This comprehensive book by the authority on supplementary warp weaving will teach you that two (or more) warps are, indeed, better than one. Chapters on methods, design, and warping are included. \$37 USD plus shipping. [www.lulu.com](http://www.lulu.com). Enter the book title.

**For sale: Louet Megado 16 Shaft Loom & Electronic Dobby.** 12 years old, in excellent condition; 16" weaving width, includes bench & 3 reeds (10 12, & 15. dent); Dobby head has USB connection for Mac or Windows; for pick up only in Greenville SC, will not ship; asking \$8000. Contact aschlein at att dot net.

## **Your Complex Weavers Journal:**

Share Your Weaving Knowledge and Experiences

Inside every Complex Weavers member is a story and wealth of knowledge! Sharing our experience and knowledge is the heart of CW and our *Journal*. Unlike other publications, we do not solicit articles from people outside our organization. As we strive to "share information and encourage interests," our *CW Journal* welcomes articles from individuals as well as study group members. If you have something to share, contact us. We will make it easy for you!

**Writer's Guidelines** are available on the [CW website](#), or by sending a request to the Editor. Material for the *Journal* is given priority according to the date received. Late or lengthy submissions are subject to available space.

**Classified and commercial advertisements** should be sent to the [Advertising Manager](#).

**Address changes** may be made by logging on to the website and updating your member profile or by contacting the [Membership Chair](#).

If you do not receive your *Journal* when you think you should, please sign in to the [Membership Directory](#) on the CW website to confirm that your membership and contact information are current.

### **2024-5 Publication Schedule:**

October 2024: Deadline August 15, 2024

February 2025: Deadline November 30, 2024

June 2025: Deadline April 15, 2025

*Journal* Editor: Ruth MacGregor at [CWJournalEditorRM@gmail.com](mailto:CWJournalEditorRM@gmail.com)  
Administrative Editor: Ally Kraus at [CWJournalAdmEditor@gmail.com](mailto:CWJournalAdmEditor@gmail.com)

Newsletter Editor: Ingrid Knox at [ingridknox99@gmail.com](mailto:ingridknox99@gmail.com)

Editing Team varies from issue to issue, but includes: Alison Giachetti, Prue Hill, Bobbie Irwin,  
Mimi Smith, Lynn Smetko and Janet Stollnitz

Indexing: Pat Stewart

Advertising: Angela Schneider at [ComplexWeaversAds@gmail.com](mailto:ComplexWeaversAds@gmail.com)

Membership/Mailing List: Amy Norris at [CWMembership@amyfibre.com](mailto:CWMembership@amyfibre.com)

Printing and Distribution: Lynn Smetko at [CWPresidentLFS@gmail.com](mailto:CWPresidentLFS@gmail.com)

Your *Journal* staff, all volunteers, are ready and eager to help you with your contribution.