



In this issue

President's Letter
In Memoriam
Area Liaisons Needed
Seminars 2022
Awards for 2022
Conferences
Board Happenings
Complexity 2022
Librarian's Corner
2022 Budget
Treasurer's Report
Events
Classifieds

President's Letter

Greetings Complex Weavers,

We continue to have new members join us. It's fascinating to see where our new members are from, and even more very rewarding to see many of them join because our current members inform them about Complex Weavers. So, we welcome our new members and thank those of you who have shared the value of belonging to Complex Weavers! A big thank you to all of you!

Our September Board of Directors meeting has ended. We accepted the Secretary and Treasurer's Reports. Then we approved the Treasurer's Budget for the coming year. We had some very serious discussions regarding the cost of printing the *Journal*, and advertising costs in the *Journal*. We are thankful that the newsletter goes out to you via the internet, and is not very costly to send, other than paying for the service used to send the newsletter link to you via email. We are all amazed at how prices of everything have risen over the past year!

Speaking of our newsletter, we would like to acknowledge our deceased members and have created a space to publish this information. This column will only work if those of you out there who are aware of a member's passing will inform your editor. Please remember to do this one small service for the family of the deceased, and for your editor, so we can be current with this news. Thank you in advance for your help. It is most appreciated!

It's that time! Time for your current Nominating Committee to search for and find candidates for open positions on the Board of Directors. This coming year, 2022, will find you voting for a new President. According to our Bylaws, the CW President may serve only one term. Your current 1st Vice President has decided to remain in that position and continue her work in our Social Media presence. Therefore, we only need a new President for the next two-year term!

If you are aware of someone who would make a good leader for Complex Weavers, or you see yourself doing this job, please contact Penny Peters, our Nominating Chairperson, pennyjanepeters@gmail.com or a member on her team, Bob Keates and Belinda Rosse, with your suggestion. Having someone to lead Complex Weavers is most important for our organization. Please step forward, if you are willing to serve or can suggest someone who might be a good candidate and is willing to volunteer.

Finally, our new Liaison Director, Sara Nordling, is looking for Area Liaisons for several locations that do not currently have a person in place. If Sara contacts your group, please find someone to become involved with the Complex Weaver Member network. It helps us to stay connected, and this is important moving forward.

Hoping you continue to happily pursue your weaving and fiber work this fall! And, remember, keep thinking about entering something in *Complexity* Exhibit next summer.

Sincerely,

Cathy
Cathy McCarthy
CW President, 2020-2022

In Memoriam

Ute H. Bargmann passed away in August 2021. She was a member of the Early Weaving Books and Manuscripts Study Group where she used her knowledge of old German script to present at several conferences at Thousand Islands Arts Center in Clayton, NY .

Maxine Weinstein passed away in September 2021. She was a member of the Bateman Study Group.

Linda Davis, passed away on October 2021. For Complex Weavers, she worked as Editor of *CW Journal* for several years (2007-2010), and provided her successor, Lynn Smetko, with a period of true mentorship that was deeply appreciated. In 2010, along with Wanda Shelp, she founded the Bateman Study Group and served as co-leader of that

group for a full rotation through the Bateman monographs and the start of a second round. She taught at *CW Seminars*, and as a true weaver's weaver, was unreservedly generous with her knowledge. All this while, she was actively weaving and sharing her explorations with other weavers. In 2011, she received the Complex Weavers Award at ANWG's biennial conference for one of her creations.



As her health declined this year, she thoughtfully found ways to sell and donate her studio equipment and supplies to guilds and other weavers (mostly in Central Oregon), but also managed to finish a few final pieces, including squares for a friendship coverlet.

Linda leaves us a legacy in the form of her many articles and three books:

- *Bateman Weaves, The Missing Monograph: The Basics and Beyond*
- *Weaving Tartans: A Guide for Contemporary Handweavers*
- *Jeannie's Journey: Great Grandmother's Pioneering Tale*

Wanted: Area Liaisons

If you live in: Alaska, Florida, Missouri, Minnesota, North Dakota, South Dakota, Nebraska, Kansas, Idaho, Montana, or Wyoming

Minimal requirements:

- Talking about Complex Weavers to others (in person or by other means)
- greeting new members
- reminding lapsed members to renew (via email)

If interested:

Contact Sara Nordling,
2nd Vice President and Liaison Coordinator

via the Complex Weavers [Board Contact page](#) or at sanordling@hotmail.com



Complex Weavers Seminars 2022

Knoxville, TN • Marriott Hotel
July 10-13, 2022

Things are coming together for Complex Weavers Seminars 2022. For all of the information, please check out the *Seminars* section of the [Complex Weavers website](#).

To see the complete list of *Leaders* and *Seminar Topics*, visit the CW Seminars 2022 page: <https://www.complex-weavers.org/seminar/seminars-2022/>

We hope you have begun work on your items for the Fashion Show and Off-the-Runway exhibits and the Poster Sessions. Don't forget to look around for Silent Auction entries. Remember that monies raised from the Silent Auction help fund our *Complexity* Exhibit.

You now can make your *Seminars* hotel reservations at the Marriott Knoxville Downtown. The preferred method for reserving your guest room is via booking link found on the [Accommodation webpage](#).

With the health and safety of our members and participants being our first priority, please know that our thoughts are with those affected by the COVID-19 outbreak. Our commitment remains to prioritize the safety of Seminars attendees. See our [Health & Safety statement](#) for more details.

Registration for Seminars 2022 will start on February 5, 2022. Stay tuned for details.

We look forward to seeing you in Knoxville!

Mimi Anderson and Cathy McCarthy
Co-Chairs, Seminars 2022
CWSeminars2022candm@gmail.com

It's Time to Plan Awards for 2022 Conferences

As 2021 nears an end, we look forward to a winter of new weaving challenges. It's also time to think about the upcoming conferences and juried shows. This past year, Complex Weavers provided the Complex Weavers Award to both virtual and in-person juried shows. Would your show like to be considered for a Complex Weavers Award? Now is a good time to request an award for 2022. The ribbon streamers are being woven this year by Catharine Wilson, who has won several Complex Weavers Awards over the years.

Information about the award can be seen on the CW website at www.complex-weavers.org/contact/cw-award-information/. There is a link to view past award winning pieces.

Please contact Ginger Kaldenbach, CW Awards Coordinator, at complexweaversawards@gmail.com to be considered for an award.

Board Happenings October Board Meeting September 25 to October 16, 2021

Treasurer's Report and 2022 Budget:

The Board approved the third quarter Treasurer's Report and 2022 Budget submitted by Treasurer Linda Kaufman.

2020-22 Strategic Plan:

The Board approved a final Strategic Plan for 2020-22.

Seminars 2022:

Seminars 2022 Co-Chair Mimi Anderson reported that a health and safety statement has been included on the *Seminars 2022* homepage and registration form. Two seminars will be offered to *Seminars* attendees via Zoom.

Continued on page 5

COMPLEXITY 2022: *Innovations in Weaving*

It's Time to Enter *Complexity 2022: Innovations in Weaving!*

Deadline is February 15, 2022

The *Complexity 2022* committee is eager to welcome your entries to Complex Weavers' sixth international juried member exhibition. The online entry portal, using Slideroom, opened November 1 and will close February 15, 2022.

You will find the link needed to submit your entry on the [Complexity page](#) of the Complex Weavers website. Once you click the Enter Here button, you will be taken to our Slideroom portal, where you will be asked to sign in to your existing Slideroom account, if you have one, or to create one if not. From there, you can click on *Complexity 2022* where you can begin the entry process. Unlike some other online submission services, you cannot access the *Complexity* entry forms by going directly to the Slideroom website.

If you have any technical problems accessing the Slideroom portal, please reach out the [Slideroom support](#) team directly. For questions about *Complexity* rules and requirements, check our [FAQ page](#) or email the [Complexity chair](#).

While you can save your work to complete later, you may find it helpful to preview and/or print the application form before you begin. This will allow you to gather all the information needed for your entry to streamline the process. Preparing your images ahead of time, according to the specifications in the [Prospectus](#), will make the entry process quick and easy.

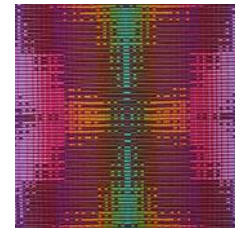
Remember, jurors will only have the images and details you provide to evaluate your entry, so submit high quality images and be thorough in your entry form responses.

Current Complex Weavers membership is required throughout the entry and exhibition, so if your renewal month is coming up, make sure to take care of that before you enter.

If you haven't quite finished your *Complexity 2022* entry yet (or perhaps not started it), there is still time before the February 15 deadline. However, the clock is ticking.

We cannot wait to see the innovative textiles you have created and wish you the best of luck in the review process.

The *Complexity 2022* Committee
Karen Donde, Chair
CW.complexity2022@gmail.com



Rosalie Neilson, *Butterflies* -detail

Librarian's Corner

As we are becoming more comfortable navigating our interactions with other people, the need for borrowing books to jumpstart our weaving has dropped off. I doubt we're weaving less -- I just think we're visiting other weavers more, and enjoying handling the fabrics others have woven during this long year and a half of isolation. And, that's a good thing.

Another good thing is that the library is now using USB memory sticks to store digital copies of the study group samples. Since many computers now lack a disc drive, this seems a logical decision. The biggest problem so far is that the USB sticks are being submitted without labels. It is not sufficient to put it in a labeled envelope- the two items will be separated in no time. Guaranteed. Please affix a label to the USB drive itself- identify which study group and the year. Write small and in ink. Thank you.

As always, I enjoy filling your requests and hearing about your projects.

Jean Hosford

Complex Weavers 2022 Budget

	2021 Budget	Year to Date	% of Budget	2022 Budget
Income				
CW Publications (Journal and Newsletter Ads)	4,000.00	2,155.50	53.9%	4,000.00
Membership	45,000.00	43,820.00	97.4%	48,000.00
Bank Interest	100.00	26.65	26.7%	100.00
40 th Anniversary Book	20,000.00			20,000.00
CW Merchandise	1,500.00	1,152.54	76.8%	1,500.00
Donations	3,000.00	300.00	10.0%	3,000.00
Total Income (Before Seminars and Complexity)	73,600.00	47,454.69	62.0%	76,600.00
Seminars 2022				90,000.00
Complexity 2022				950.00
Total Income	73,600.00	47,454.69	64.5%	167,550.00
Expenses				
CW Publications	(25,000.00)	(26,763.26)	107.1%	(33,000.00)
Merchandise				
40 th Anniversary Book	(32,000.00)			(32,000.00)
Fees	(1,700.00)	(1,402.93)	82.5%	(1,800.00)
Postage	(500.00)	(331.41)	66.3%	(500.00)
Membership Expenses	(200.00)			(200.00)
Computer/Web	(2,500.00)	(3,312.53)	132.5%	(4,000.00)
Awards	(250.00)	(22.25)	8.9%	(250.00)
Publicity	(500.00)			(500.00)
Taxes/Legal	(100.00)			(100.00)
Election	(750.00)	(643.20)	85.8%	(750.00)
Officers	(300.00)			(300.00)
Library	(400.00)			(400.00)
HGA Membership	(100.00)	(97.00)	97.0%	(100.00)
Professional Services (Contractors)	(500.00)			(500.00)
Colorado Business License	(10.00)	(10.00)	100.0%	(10.00)
Total Expenses (Before Seminars and Complexity)	(64,810.00)	(32,582.58)	50.3%	(74,410.00)
Seminars 2022	(7,000.00)	(6,750.00)	96.4%	(90,000.00)
Complexity 2022	(1,000.00)	(1,110.00)	111.0%	(9,000.00)
Total Expenses	(72,810.00)	(40,442.58)	55.5%	(173,410.00)
Net Gain/Loss	790.00	7,012.11		(5,860.00)

Board Happenings, Continued

Complexity 2022:

Complexity 2022 Chair Karen Donde reported that entries to the exhibit may be submitted beginning November 1, 2021 using the Slideroom program set up by Margaret Dugger.

Nominating Committee:

The 2022 Nominating Committee includes Penny Peters (USA), Chair; Bob Keates (Canada); and Belinda Rosee (Australia). Board positions to be filled in 2022 include President and 1st Vice President.

CW Journal:

CW Journal Editor Ruth MacGregor reported that, after late publications of the last several issues for various reasons, the Journal is back to a more normal publication schedule beginning with the October 2021 issue.

Social Media:

1st Vice President and Social Media Chair Eileen Driscoll reported that CW has 4,503 Facebook followers and 1,080 Instagram followers. The most popular Facebook posts between July 2020 and July 2021 concerned the Cartography of Cloth Exhibit in Australia, the October 2020 CW Journal Cover, Weave to Dye by Kay Faulkner, and the Best of Complexity award to Inge Dam's Twists and Turns.

Member Spotlight:

The Board discussed the possibility of a "Member Spotlight" to be included in future issues of the CW Newsletter for the purpose of featuring members who may not be well-recognized by the larger CW community.

Janet Bealer, Secretary



Inge Dam
Twists and Turns (detail)

**Complex Weavers
Balance Sheet Standard
As of September 30, 2021**

Assets

Current Assets

PayPal \$13,112.70

Checking/Savings

Bank of America Checking \$15,969.90

Bank of America Savings \$384,073.19

Total Current Assets \$413,155.79

Total Assets **\$413,155.79**

Liabilities and Equity

Liabilities

Current Liabilities

Credit Cards

Bank of America Visa \$0.00

Total Credit Cards \$0.00

Total Current Liabilities \$0.00

Total Liabilities **\$0.00**

Equity

Retained Earnings \$416,682.72

Net Income (\$3,526.93)

Total Equity **\$413,155.79**

Total Liabilities and Equity **\$413,155.79**

**Restricted Fund Balances in Savings
As of September 30, 2021**

Complexity Fund	\$25,722.29
Scholarship/Friendship Fund	\$575.12
Memorial Fund	\$520.00
Silent Auction Fund	\$22,167.95
Diane Fabeck Fund	\$1,000.00
Kathi Spangler Fund	\$ 850.00
Manuscript Recovery Fund	\$3,600.00
Sandra Rude Memorial Scholarship Fund	\$25,744.00
Total Restricted Funds	\$ 80,179.36
Total Unrestricted Savings	\$303,893.83
Total Savings	\$384,073.19

Linda Kaufman, Treasurer

Events

The Las Aranas Spinners and Weavers Guild's 13th annual Spiders' Market Sale and Exhibit will return on Thursday, Friday and Saturday March 3,4 and 5, 2022 in Albuquerque, NM. For additional information contact: myrachangt@gmail.com or (505) 859-0680. www.lasaranas.org

Classifieds

Spinning Wheel Sleuth: HAND LOOMS, SUPPLEMENT #22. \$10
The Loom Built by Lars Hokanson; Devereux Mansion Looms Revisited; Barbour Linen Looms; School Desk Loom; The Loom Manual Library of Janet Meany. Hand Looms, Supplements #1 to #10, on flash drive. \$15.
Make checks payable to and mail to The Spinning Wheel Sleuth, P. O. Box 422, Andover, MA 01810. Or via PayPal at www.spwhsl.com.

Classifieds, continued

***The Draughts of Jeremiah Fielding 1775* edited by Pat Foster, Janet Dunbar and Lynne Harper.**

A spiral-bound book contains over 50 weaving drafts assembled in 1775 by a Lancashire weaver. The original drafts, modern versions and photographs of modern woven samples are shown.

See <https://www.patfosterweaverdyer.com/>

***Ply-Splitting from Drawdowns: Interpreting Weave Structures in Ply-Split Braiding* by Barbara J. Walker**

Learn how to use any single layer drawdown for ply-splitting. Many illustrations and photos guide you through the process. Finishing techniques are included and gallery pages inspire. \$34 USD plus shipping. www.barbarajwalker.com

***Supplementary Warp Patterning: Turned Drafts, Embellishments & Motifs* by Barbara J. Walker**

This comprehensive book by the authority on supplementary warp weaving will teach you that two (or more) warps are indeed better than one. Chapters on methods, design and warping are included. \$35 USD plus shipping. www.lulu.com Enter the book title.

Colour Handling in Fiberworks: New online video-based course

- How to get the best from colour handling in Fiberworks weaving software - see review in February CW Journal
- Fourteen bite-sized video lessons totaling more than an hour plus downloadable practice drafts and images
- Registration fee of £25 GBP gives repeat access to all of the material for a full year.
- Pay by credit card or PayPal in any currency.

www.brendagibson.com/online-courses



Your *Journal*: Share Your Weaving Knowledge and Experiences

Inside every CW member is a story and wealth of knowledge! Sharing our experience and knowledge is the heart of CW -- unlike other publications, we do not solicit articles from individuals outside our organization. In an effort to “share information and encourage interests”, Complex Weavers welcomes articles from individual weavers as well as study group members. Material for the *Journal* is given priority according to the date received. Late or lengthy submissions are subject to available space. Classified and commercial advertisements should be sent to the [Advertising Manager](#). Address changes may be made by logging on to the website and updating your member profile or by contacting the [Membership Chair](#). If you do not receive your *Journal* when you think you should, please sign in to the [Membership Directory](#) to confirm that your membership and contact information are current.

2022 Publication Schedule:

February 2022: Deadline November 30, 2021

June 2022: Deadline March 31, 2022

October 2022: Deadline July 31, 2022

Journal Editor: Ruth MacGregor at CWJournalEditorRM@gmail.com

Newsletter Editor: Ingrid Knox at ingridknox99@gmail.com

Editing Team: Mimi Smith, Janet Stollnitz and Prue Hill

Pat Stewart, indexer.

Advertising: Angela Schneider at ComplexWeaversAds@gmail.com

Membership/Mailing List: Amy Norris at CWMembership@amyfibre.com

Printing and Distribution: Lynn Smetko at

CWPresidentLFS@gmail.com

CW *Journal* Article Guidelines are posted on the CW website or can be obtained from the Editor. Please consult them before starting or submitting your article. The Guidelines will answer a lot of your questions and save you time. Your *Journal* staff, all volunteers, are ready and eager to help you with a contribution.