

COMPLEX WEAVERS

Encouraging curiosity, exploration, innovation in weaving

May 2021 | Number 132



Newsletter

In this issue

President's Letter
Board Happenings
2021 CW Election
Treasurer's Report
Complexity 2022
CW Study Groups
40th Anniversary Book
Events
Classifieds

President's Letter

Greetings Complex Weavers,

I'd like to remind you that the 2022 Seminars will be held in Knoxville, Tennessee July 10 through July 13, 2022. Mark those calendar+ and plan on attending *Seminars* and our signature *Complexity* Exhibition. A fun time will be in store for all of you!

In my part of the world it is now Spring. Many flowers have made their appearance both in gardens and on the trees. A very lovely time of the year.

It also was time for our April CW Quarterly Board meeting. We tried something new! The Board of Directors met on April 10 using the Zoom meeting format for the first time. The meeting went on for 2 hours and 15 minutes. Many of the agenda topics were covered during this time. When it came to the end of the 2 hours scheduled for the meeting, there were only three topics left to discuss. One did not take a lot of time, but the last 2 agenda items needed a lot more discussion time. The Zoom meeting ended with two items left to discuss using [Groups.io](https://groups.io).

[Groups.io](https://groups.io) is basically an email group service that we are using for asynchronous meetings. Your Board has been meeting this way for several years. Board discussions using this platform take considerable amount of time as discussions go back and forth, essentially by email. Having only two topics to discuss using [Groups.io](https://groups.io), April's meeting was wrapped up two weeks after the Zoom meeting. I view learning about Zoom during the pandemic as a wonderful tool for our organization.

Once again, I am hoping you are all able to continue pursuing your weaving and fiber pursuits. Keep foremost in your mind ideas about projects you could enter into *Complexity*, the Fashion Show, and Off the Runway. I'm looking forward to feasting my eyes on the many wonderful things you all will be sharing come 2022 in Knoxville!
Happy Weaving!

Sincerely,

Cathy

Cathy McCarthy
CWV President, 2020-2022
cw2022ctm@icloud.com

Board Happenings

April Board Meeting: April 10 – May 1, 2021

The Board of Directors met via Zoom for the first portion of the meeting to complete action on several items, and then finished the meeting using its usual Groups.io platform for items that required extensive discussion.

Treasurer's Report:

A line item totaling \$10,200 was added to the 2021 budget to cover the cost of printing and mailing a fourth issue of the *CW Journal* during the 2021 fiscal year.

Seminars 2022:

Seminars 2022 Co-chair Mimi Anderson reported that 75 percent of *Seminars* presenters have been contracted as of April 1. Philis Alvic will give the Key-note Address during the CWV Annual Meeting on July 13, 2022, during a lunch buffet. The *Seminars* schedule is still tentative, and will include a few seminars possibly via Zoom.

Area Liaisons:

2nd Vice President Alice van Duijnen reported that activity has been slow over the past year due to COVID-19. There is no longer an Area Liaison for France, and Alice is looking for a new Area Liaison for Florida. There is now language support for Danish and Swedish. Brenda Gibson is the new Area Liaison for Great Britain and Ireland. Thank you Brenda for volunteering.

Study Groups:

Study Groups Chair Elaine Plaisance reported there are currently 18 active study groups. She plans to close two study groups for lack of interest. There was discussion about ways to enhance study group visibility, including publishing testimonials in the *CW Journal*.

Sandra Rude Memorial Grant for Advanced Learning:

Discussion is ongoing regarding setting up the SRMG and will continue during the next Board Meeting.

Digitizing Study Group Materials:

Discussion began regarding the possibility of digitizing study group materials and will continue during the next Board Meeting.

Financial Strategy & Investing Committee:

The Board approved the use of Merrill Lynch as CWV's investment advisor.

Submitted by Janet Bealer, Secretary



Cartography of Cloth

Complex Weavers of Australia

3 - 27 June 2021

*Cartography of Cloth, inaugural exhibition
by Australian CWV members.*

Gallery 1
Strathnairn Arts
www.strathnairn.com.au

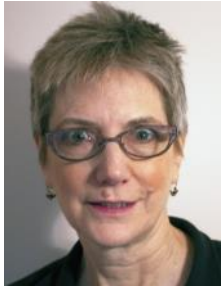
"Complex Weavers is a global organisation dedicated to expanding the boundaries of hand weaving, to encourage weavers to develop their own creative styles and to inspire through research and the sharing of innovative ideas."



2021 CW Election Results

The Election Results are here! Many congratulations to our newly elected officers: Sara Nordling as 2nd Vice-President, Janet Bealer as Secretary, Linda Kaufman as Treasurer, Elaine Plaisance as Study Group Coordinator. Thank you to all members who participated and cast their votes online. Installation will be at the CW Annual General Meeting.

- Sue Mansfield, Nominating Committee Chair



Sara Nordling,
2nd Vice-President



Janet Bealer,
Secretary



Linda Kaufman,
Treasurer



Elaine Plaisance,
Study Group Coordinator

Treasurer's Report

Ist Quarter 2021

Complex Weavers
Balance Sheet Standard
As of March 31, 2021

The current bank account balances as of the end of Ist Quarter 2021 are:

PayPal	\$37,215.12
Checking	\$17,200.26
Savings	<u>\$364,054.52</u>

Banking Totals **\$ 418,469.90**

Restricted Fund Balances in Savings
As of March 31, 2021

Complexity Fund	\$ 25,722.29
Scholarship/Friendship Fund	\$ 575.12
Memorial Fund	\$ 520.00
Silent Auction Fund	\$ 23,277.95
Diane Fabeck Fund	\$1,000.00
Kathi Spangler Fund	\$ 850.00
Manuscript Recovery Fund	\$ 3,600.00
<u>Sandra Rude Memorial Scholarship Fund</u>	<u>\$ 25,544.00</u>
Total Restricted Funds	\$ 81,089.36
Total Unrestricted Savings	\$ 337,380.54
Total Savings	\$ 418,469.90

Complexity 2022 - Let's Sync Calendars

Complexity 2022 is coming into focus thanks to a dedicated team working out the many details. The prospectus is getting its final edit and should be available on the Complex Weavers website by late May.

In the meantime, below is a look at the Exhibit Calendar to help you in planning your entry. Note the first one! Opening of the submission period is only six months away. If that seems like a long time to you, consider that 2021 is already five months old.

Exhibit Calendar

Online submissions open	Nov. 1, 2021
Deadline for submissions	Feb. 15, 2022
Jury review	Feb. 21-April 1, 2022
Jury notifications made	Apr. 15, 2022
Work arrives	June 20-24, 2022
Exhibit opens	July 1, 2022
Gallery reception	July 1, 2022: 5-9 pm
CW Seminars reception	July 10, 2022: 7-9 pm
Exhibit closes	July 29, 2022
Work packed and shipped	Week of August 1, 2022
Virtual gallery opens	July 1, 2022
Virtual gallery closes	Sept. 1, 2022

That calendar also leaves a lot of options for volunteers to get involved in a timeframe that works for them. If you'd like to join us, please [get in touch](#).

[Karen Donde](#)

Complexity 2022 Chair

Study Groups Update

We have 17 active study groups (one having closed recently):

Archaeological Textiles
Bateman Weaves
Beyond Plain Weave Garments
Designing Fabrics
Dimensional Texture
Double Weave
Early American Coverlets and Counterpanes
Early Weaving Books and Manuscripts
Fine Threads
Kumihimo
Ondulé Textiles
Oscar Beriau Sampling
Preserving our Past: Index and Scrapbook of 20th Century Handweavers
Sample Exchange the Old-Fashioned Way
Sixteens
Structure
Tied Weave and Beyond

What's currently happening in each group:

CW Doubleweave Study Group just started a year focused on 3 dimensional and inclusions. The delayed October *CW Journal*, being mailed to you now, is filled with doubleweave articles, mainly from our group. Since we are sharing electronically we have no size limit to our group and always welcome new members.

Early Weaving Books and Manuscripts is behaving as normal, except the leader is a bit remiss with the renewal letter and sending out the last samples that wandered in. The group ALWAYS accepts new members.

CW Structures This self-study group focuses on learning weave structures, combined with exercises to enhance your computer weave program skills. We have no "group" projects, themes, or woven samples, and you can jump in wherever you like! The basic structures can be tweaked in so many ways: the original study group leader, Judy, put a lot of thought into the assignments to keep everyone learning. You may post your original solutions as wif files, which will help others learn. Our membership has doubled to 23 members since the pandemic started last March.

The CW **Tied Weaves** group is working on this year's sample exchange. We held Zoom meetings this year and really enjoyed getting to know one another a bit more in that format. Our sample exchange happens in May, so members are weaving!!

The **Kumihimo** group is up and braiding after a pandemic-induced hiccup. This year we are focusing on texture. We could take new members, but this year's exchanges are full.

The **Beriau** Study Group is limping along. The Study Group Leader gave everyone a very generous pass this year due to COVID. Finally our samples went out last week. We already have a few new members and we're not taking additional members until next November. We'll be having a Zoom meeting soon and there will be a program later this spring on the Leader's Beriau research. Thank goodness for Zoom.

24 More or Less Study Group just mailed out the 2020-2021 Exchange packet to all its members. One difference this year is that we permitted one draw loom sample woven on a combination 20-shaft Myrehed draw loom mounted on an 8-shaft counter-march loom. We will be awaiting response from the group about including draw loom samples this year. It looks like we will have space for 2-3 new members in June (30 member limit).

Fine Threads Study Group will have our annual sample exchange in May. Membership for 2022 will be open from September through December.

The **Old-Fashioned Way** is a self-study group that focuses on exploring weave structures of the participant's interest. Woven samples are submitted once a year. It is a small group (9) and room for more.

The **Sixteens** are in good health and have now enjoyed several Zoom meetings, through which we really feel we are getting to know each other. Our study this year, and exchange in October, is waffle weave. We're currently identifying resources and inspirations. We have recently welcomed one additional member to the group but still have a couple more vacancies for the current study.

The **Early American Coverlets & Counterpanes** Study Group will be exploring coverlet and counterpane fringes this year. We will have a sample exchange in October and 3 newsletters. \$5.00 for online pdf file

found on dedicated website. Additional charge for the annual sample exchange. Our newsletters are made available to our members on our members' secured website coverletgroup.com via pdf files along with all previous newsletters. New members are always welcome.

The **Dimensional Texture** group, like the Sixteens, is also studying waffles this year, ready for our sample exchange in the summer. They don't have vacancies at the moment but always welcome hearing from anyone who has an interest in joining the group. Contact Wendy Morris.

The theme of 2021 for **Designing Fabrics** is: The Third Dimension. Yes, we welcome new members.

The **Beyond Plain Weave Garments** group is planning a sample exchange in May.

Bateman Study Group is working on *Monograph 35: Multiple Tabby Weaves*. In the past years, this monograph has engendered some of the best, most creative work that we've seen from studying any of the monographs. Definitely a favorite. A sample and writeup are due in the fall. The date hasn't been set yet. The group is limited to 20 members and we have spots for 3-4 right now. Anyone interested should contact the leader Meg Wilson about being in the study group.

The **Archaeological Textiles** Study Group is sharing a wide variety of resources related to textiles from before 1700. Member projects for 2021 include: constructing a warp-weighted loom and weaving lichen-dyed, hand-spun wool from heritage sheep breeds; planning and weaving two- and three-colored samite; tracing the history of gauze and leno weaves; re-searching Bedouin weaving; recreating a 14th-century Estonian shawl. We are a busy and diverse group! To help keep up with all of our projects, we've started having quarterly zoom meetings. The most recent one was in April. Members also share information of general interest on our email list and on our website at <http://www.archaeologicaltextiles.net>

The **Ondulé Textiles** Study Group is a small but good group of 12 now. It started with a handful of members, and it has been growing gradually. No one has dropped out. Because weaving with a fan reed is a very slow process, we do not exchange samples, but we do share information about

Continued page 7



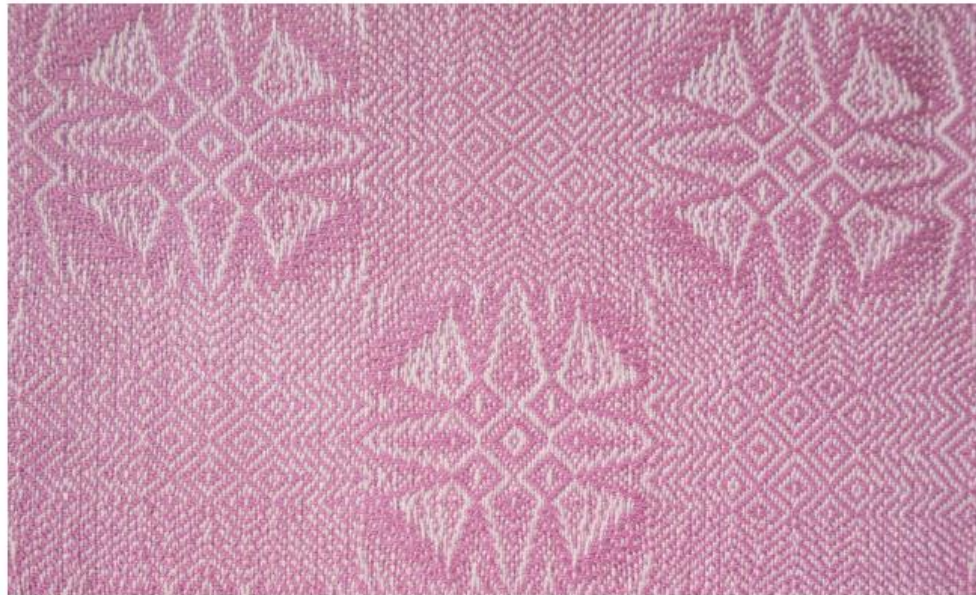
New CW book in honor of Wanda Shelp and our 40th anniversary

Eight Shafts Beyond the Beginning: Personal Approaches to Design

Enjoy how 72 weavers approach design. The first half of the book encompasses 8-shaft work with emphasis on controlling straight and curved lines to form motifs, using color, and adding personal touches. The second half takes 8-shaft components to 10 to 40 shafts, drawlooms, Jacquards, ply-splitting, and twining through the use of interleaving, tied work, networking, block substitution, graphic (Photoshop) approaches, layering, and other design techniques.



Top, Lynn Smetko
Bottom, Dorothy Solbrig



Above, Peg MacMorris
Right, Lesley Willcock

Publication Coming Soon!

- If you have pre-ordered the book, you will be contacted by email as soon as it's ready to ship.
- Otherwise, once it's in print, you can order it from our website: complex-weavers.org/market
- All who have pre-ordered the book will receive an invoice by email prior to shipping.

Study Groups, continued from page 5

our projects. We have a [Groups.io](https://groups.io) site where photos, weaving drafts and other information are shared. One member, in Great Britain, maintains that. Another member schedules our Zoom meetings, which occur every other month. This is a challenge because we have one weaver in Germany, two in Great Britain, and the other nine spread from Rhode Island to Oregon.

Some members are advanced weavers, and doing beautiful work, others are much less experienced, but are encouraged to show what they do and share problems. Some are very innovative as regards to materials. Meeting on Zoom has been most helpful because it is an easy way to share ideas and offer suggestions.

Elaine Plaisance, Study Group Coordinator

Events

Weaving Re-Imagined: At the Intersection of Tradition and Creativity

An invitational group exhibition of weaving by contemporary artists working in a variety of techniques: Janet Austin, Rita R. Gekht, Michelle Lester, Bojana Leznicki, Denise Marshall, Ellen Ramsey, Michael F. Rohde, Carol K. Russell, Mary-Ann Sievert, Natalya Smirnova, Rebecca Smith, Armando Sosa, and Betty Vera. New Hope Arts Center, New Hope, PA, May 22 through July 18, 2021. www.newhopearts.org

Emergence

Emergence is the debut exhibition of North Adams Contemporary—an evolving collaboration of its four professional artist members, who meet regularly for discussion, critique, and the development of opportunities for exhibiting and marketing artwork. The exhibition features new work by Debi Pendell, Diane Sawyer, Sarah Sutro, and Betty Vera, from June 3–30, 2021. Eclipse Gallery, 243 Union St., North Adams, MA 01247 eclipsemill.com/emergence

Classifieds



The Textiles of the Nile Valley in Style, March 15-30, 2022

Join Nancy Arthur Hoskins on her fourth Textile Tour of Egypt. Our small group visits museums, temples, and tombs in Alexandria, Cairo, Luxor, and Aswan to see the sights of Egypt with a textile theme. We sail the Nile on our chartered dahabiya with an Egyptian scholar/guide and travel concierge Christine Pearson. Intentionally Different Travel is an Australian company that specializes in textile tours. www.intenttravel.com.au or Robert@intenttravel.com aunhoskein@comcast.net

Spinning Wheel Sleuth: HAND LOOMS, SUPPLEMENT #22. \$10

The Loom Built by Lars Hokanson; Devereux Mansion Looms Revisited; Barbour Linen Looms; School Desk Loom; The Loom Manual Library of Janet Meany. Hand Looms, Supplements #1 to #10, on flash drive. \$15. Make checks payable to and mail to The Spinning Wheel Sleuth, P. O. Box 422, Andover, MA 01810. Or via PayPal at www.spwhsl.com.

Ply-Splitting from Drawdowns: Interpreting Weave Structures in Ply-Split Braiding by Barbara J. Walker

Learn how to use any single layer drawdown for ply-splitting. Many illustrations and photos guide you through the process. Finishing techniques are included and gallery pages inspire. \$34 USD plus shipping. www.barbarajwalker.com

Classifieds, continued

***Supplementary Warp Patterning: Turned Drafts, Embellishments & Motifs* by Barbara J. Walker**

This comprehensive book by the authority on supplementary warp weaving will teach you that two (or more) warps are indeed better than one. Chapters on methods, design and warping are included. \$35 USD plus shipping. www.lulu.com Enter the book title.

***The Draughts of Jeremiah Fielding 1775* edited by Pat Foster, Janet Dunbar and Lynne Harper.**

A spiral bound book contains over 50 weaving drafts assembled in 1775 by a Lancashire weaver. The original drafts, modern versions and photographs of modern woven samples are shown.

See <https://www.patfosterweaverdyer.com/>

Colour Handling in Fiberworks: New online video-based course

- A detailed exploration of how to get the best from colour handling in Fiberworks weaving software
- Fourteen bite-sized video lessons totalling more than an hour plus downloadable practice drafts and images
- Registration fee of £25 GBP gives repeat access to all of the material for a full year.
- Pay by credit card or PayPal in any currency.

www.brenda-gibson-weave-tuition.thinkific.com



Your *Journal*: Share Your Weaving Knowledge and Experiences

Inside every CW member is a story and wealth of knowledge! Sharing our experience and knowledge is the heart of CW - unlike other publications, we do not solicit articles from individuals outside our organization. In an effort to “share information and encourage interests”, Complex Weavers welcomes articles from individual weavers as well as study group members. Material for the *Journal* is given priority according to the date received. Late or lengthy submissions are subject to available space. Classified and commercial advertisements should be sent to the Advertising Manager. Address changes may be made by logging on to the website and updating your member profile or by contacting the Membership Chair. If you do not receive your *Journal* when you think you should, please sign in to the Membership directory to confirm that your membership and contact information are current.

2021-2022 Publication Schedule:

June 2021: Deadline March 31, 2021

October 2021: Deadline July 31, 2021

February 2022: Deadline November 30, 2021

Journal Editor: Ruth MacGregor at CWJournalEditorRM@gmail.com

Newsletter Editor: Ingrid Knox at ingridknox99@gmail.com

Editing Team: Mimi Smith, Janet Stollnitz and Prue Hill
Pat Stewart, indexer.

Advertising: Angela Schneider at ComplexWeaversAds@gmail.com

Membership/Mailing List: Amy Norris at
CWMembership@amyfibre.com

Printing and Distribution: Lynn Smetko at
CWPresidentLFS@gmail.com

CW *Journal* Article Guidelines are posted on the CW website or can be obtained from the Editor. Please consult them before starting or submitting your article. The Guidelines will answer a lot of your questions and save you time. Your *Journal* staff, all volunteers, are ready and eager to help you with a contribution.