

COMPLEX WEAVERS

Encouraging curiosity, exploration, innovation in weaving

March 2021 | Number 131



Newsletter

In this issue

President's Letter
Treasurer's Report
2021 CW Election
Board Happenings
Complexity 2022
Notes from *CW Journal*
Editor
CW Study Groups
Librarian's Corner
40th Anniversary Book
Classifieds

President's Letter

Greetings Complex Weavers.

Your Board of Directors recently finished their first quarterly meeting of 2021. You have a wonderful group of people representing you. They work hard and accomplish a lot to keep this organization running smoothly.

At the Board of Directors meeting, the Nominating Committee presented a slate of officers for the upcoming election, the results of which will be announced at the annual meeting. (The candidates and election information is shown on pages 3 and 4.) I would be remiss if I did not thank the Nominating Committee for all their work in getting this slate of officers for the coming election. Those serving on the Nominating Committee include: Sue Mansfield, Nominating Chairperson and her team, Lesley Willcock and Jean Curry. We are very grateful to you three volunteers for finding this slate for the next two years. Please know your work is very much appreciated!

Another area Complex Weavers members have for volunteering is well under way. Mimi Anderson and I are co-chairing *Seminars 2022*. The *Seminars* will be held in Knoxville, Tennessee, July 10 to 13, 2022. We're hoping by July 2022, most of COVID-19 will be behind us and we'll once again be able to meet in person in a nice-sized group. While you are waiting for us to meet as a group, consider entering *Complexity* and our informal Fashion Show, and keep your looms producing wonderful creations to share with all of us at *Seminars 2022*!

Treasurer's Report

4th Quarter 2020

Your Board of Directors is heading in a new direction — running our next board meeting as a Zoom meeting. Up to this point, our meetings have been run through Groups.io over the internet. These meetings are very thorough, but each member of the Board invests a lot of time and energy keeping up with the topics at hand. Those meetings have been known to run three or four weeks, or longer. By meeting on Zoom, we will try to streamline the process. Topics that can be accepted and readily voted on, like the minutes, will be dealt with more quickly and those that need a lot of discussion will be given the time needed beyond the Zoom meeting time frame. Hopefully, this will be the best of both worlds.

For planning purposes, our next Annual Meeting is usually scheduled to coincide with a regional weaving conference. This year many of those conferences are canceled. Your president was going to have this meeting in Michigan, but the Michigan League of Handweavers is hosting their conference and workshops from January through August this year, all in virtual format. At our next BOD meeting, we will set the meeting date for our own Zoom Annual Meeting sometime in July. Look for future announcements as to when our Annual Meeting will happen.

Finally, it is fun to work with all the members of this CW Board of Directors. It is most interesting to see the workings of this all volunteer organization. The Board is made up of people from five different countries and all offer their strengths to the smooth workings of the meetings. I am hoping the Board knows their talents and efforts are very much appreciated by your President!

Please know each and every one of you is encouraged to consider what you can offer to the running of Complex Weavers in the near future!

Keep those looms working! Keep that fiber developing! Keep being safe!

Sincerely,

Cathy

Cathy McCarthy

CW President, 2020-2022

cw2022ctm@icloud.com

The story of 2020 is donations. We received over \$36,000 in donations this year to our restricted and unrestricted funds. The bulk of the unrestricted donations came from our members who donated their *Seminars* registration fees when that event was cancelled. The bulk of the restricted donations came from Michael Rude to fund the new Sandra Rude Memorial Scholarship Fund.

We are also somewhat ahead this year because we have paid for printing only two issues of the *Journal*. Fortunately, there is some contingency in the *Journal* budget for 2021 and we shall be only slightly over next year.

Linda Kaufman, Treasurer

The current bank account balances as of the end of the 4th Quarter of 2020 are:

PayPal	\$ 23,652.32
Checking	\$ 68,444.82
Savings	\$ 314,046.54
Assets Total	\$406,143.68

Equity	
Retained Earnings	\$367,591.13
Net Income	\$ 38,552.55
Total Equity	\$406,143.68

The current balances in the Restricted Funds are:

Complexity Fund	\$ 25,722.29
Manuscript Recovery Fund	\$ 3,600.00
Scholarship (Friendship Fund)	\$ 575.12
Memorial Fund	\$ 520.00
Silent Auction Fund	\$ 23,277.95
Kathi Spangler Fund	\$ 850.00
Diane Fabeck Fund	\$ 1,000.00
Sandra Rude Memorial Scholarship Fund	\$ 25,544.00
Total Restricted Funds	\$ 81,089.36

2021 CW Election

Soon, you will receive an email notification and instructions for voting that will allow you to vote in the Complex Weavers election via a secure internet site. The electronic voting process is simple, free and secure and we encourage all members to take advantage of the streamlined process to vote. Many thanks go to Amy Norris for managing the balloting. Voting begins on March 2, 2021 and ends on April 8, 2021.

The nominations for CW positions are 2nd Vice-President-Sara Nordling, Treasurer- Linda Kaufman , Secretary- Janet Bealer and Study Group Coordinator- Elaine Plaisance

The Nominating Committee

The Board would like to express its appreciation to the Nominating Committee for recruiting these well-qualified candidates. The Committee, chaired by Sue Mansfield, also includes Jean Curry and Lesley Willcock.

Sara Nordling
2nd Vice-President

Sara Nordling has been weaving for almost 30 years. She began her weaving adventures when she lived in Chicago and was immediately hooked. What began as a hobby ended up becoming the main focus of her art as she first earned at B.F.A. (Baylor University) then an M.F.A in Studio Art/Textiles (Indiana University) by going back to school for a second career. Sara has been a member of Complex Weavers for many years as well, at times writing for the *Journal* and other publications, being a part of the 16's and Double Weave Study Groups and teaching at conferences. She grew up in Wisconsin but has lived in Illinois, Missouri, Michigan, Texas and Indiana. Sara weaves items to wear, art for walls, sculptural pieces and commissions for homes and churches. One of her favorite weave structures is double weave,



including pick up, pleats, networked and blocks. Another interest of hers is good design in weaving by taking the aspects she uses when teaching drawing, painting and design at the university level and bringing those over into weaving. Sara currently teaches at Purdue University Fort Wayne in the Department of Art and Design and spends her free time weaving, dyeing and designing.

Linda Kaufman
Treasurer



I have been weaving for over thirty-five years. I was enchanted with handweaving the first time I saw it done and I have been weaving ever since. My loves are structure and fine threads. I weave household items, scarves, shawls and yardage for clothing. Towels are a favorite of mine (for experimentation). I love learning about weaving and am a faithful attendee of guild workshops, conferences and study groups. My fiber journey also includes dyeing and spinning.

Until now, all my weaving has been done on a ten shaft Glimakra Standard Countermarche, an eight shaft table loom and an eight shaft Baby Wolf. I recently took delivery of an AVL K Series CompuDobby loom. I am having fun exploring the possibilities of more than 10 shafts.

In my many years of weaving I have lived in a half dozen different places and my membership in the local guilds has provided me with a warm welcome and friendship that has eased these transitions. The generosity and shared knowledge among weavers is as much a reward as a finished project.

Over the years I have held various offices in my local guilds including President, Treasurer and Program Chair. I served for four years on the Board of Directors of the Intermountain Weavers Conference where I was the Registrar.

I am currently halfway through my first term as CW Treasurer. I have enjoyed getting to know the dedicated and talented people who serve on the Board. It would be my honor to continue as Treasurer.

Janet Bealer

Secretary



I've been weaving since the early 1970s, in early years studying at Georgia State University, Penland School of Crafts and Arrowmont School of Crafts. However, I am mostly self-taught in the area of multi-harness weaving because there were few opportunities readily available to me to study that in those early days and I have always had an interest in pattern and complex structures. One of my first looms was an 8-harness Tawaquiva floor loom. I bought an AVL 16-harness dobby loom in 1980 and then a 24-harness AVL a few years later. For a number of years, I was drafting on graph paper and pegging my patterns on dobby bars, but the patterns kept getting longer and more complex.

I finally got the computer interface for the 24-harness loom, which has saved me untold amounts of time and made the drafting process much easier. I also had the opportunity to borrow a computer-controlled 32-harness Louet Megado, which I now own, along with the 24-harness AVL. I use the WeavePoint and ProWeave programs to draft patterns and control the looms. The structures I enjoy weaving include diversified and damask-type weaves on twill threadings, loom-controlled weft substitution weaves like taqueté and samitum, summer and winter, double to quadruple weaves and deflected double weaves with and without differential shrinkage. Materials of choice include primarily silk, silk/Merino blends and alpaca. Items woven include scarves and other wearables, blankets, pillows and liturgical pieces.

I have been a member of Complex Weavers since 1996. Early on, I participated in The Sixteens Study Group and I have found much inspiration from reading the *CW Journal*. I joined the CW Board in July 2020 as secretary to fill a vacancy in that position. I look forward to continuing to serve the organization in that role and taking advantage of all that the organization offers.

I was also a founding member of Handweavers of the Savannahs (now Fiber Guild of the Savannahs), Savannah, Georgia and a former member and Board member of the Chattahoochee Handweavers Guild, Atlanta. Since 1998, I have been an exhibiting member of Piedmont Craftsmen Inc., Winston-Salem, North Carolina and currently serve on its Board of Directors.

Elaine Plaisance

Study Group Coordinator



I learned to weave in 1980's Berkeley, California and I've been weaving ever since. I am entranced by color and the patterns that can be created in multi-shaft weaving. I was a member of the Collapse, Pleat and Bump Study Group for many years. Now I am a member of the Dimensional Texture Study Group. For the past year, I have been the Complex Weavers Study Group Coordinator. This has been a wonderful position for learning more about our great study groups and what is happening in each of them. I would be honored to continue supporting Complex Weavers in this position.

Board Happenings January Board Meeting

January 11 – February 5, 2021

Seminars 2022:

The Board approved a motion for *Seminars 2022* to sponsor the Opening Reception for the *Complexity 2022* exhibit at the Emporium Arts and Culture Alliance in Knoxville, Tennessee, on July 10, 2022, as well as shuttle bus service from the Marriott Hotel (*Seminars 2022* headquarters) to the Emporium for the reception.

Complexity 2022:

The Board approved a revised Prospectus submitted by *Complexity 2022* Chair Karen Donde to clarify eligibility and image requirements for works being submitted to *Complexity 2022*. Karen also announced the jurors for *Complexity 2022* will be Robyn Spady, Betty Vera and Julie Hedges.

Continued pg 6

Complexity 2022—Introducing the 2022 Jurors

The *Complexity 2022* committee is excited to announce that [Robyn Spady](#), [Betty Vera](#) and [Julie Hedges](#) have agreed to serve as jurors for the upcoming Complex Weavers exhibit—Innovations in Weaving, July 2022, in Knoxville, Tennessee. Together, they offer a valuable mix of expertise and decades of experience.

For potential exhibitors, understanding who the jurors are, their particular specialties and their approach to the medium is an important first step in planning your entry. Yes, your work must be genuine to you and your own artistic practice, but it will be judged through others' eyes. So it doesn't hurt to get a better idea of what's going on behind those eyes.



Betty Vera

In an upcoming issue of the *Journal*, you'll learn more about these jurors and their suggestions about successfully entering juried shows. For now, click on their names above to visit their websites. Take a look at their work, read artist statements and learn what is important to them.

Other aspects of the exhibit are coming together. The prospectus should be available for your review by this May. Final details are being worked out with the venue. Plus, we are transitioning to a different online entry/jury service. The committee's goal is to make the process of entering as smooth and easy for you as possible, so you can focus on the important part: planning and creating your entry.

We've also assembled a great *Complexity 2022* committee and invite you to join us in pulling the details together. And, yes, committee members can still enter.

[Karen Donde](#)
Complexity 2022 Chair



Robyn Spady



Julie Hedges

A Note from Your *CW Journal* Editor

Before all else, I would like to thank you all for your kind messages. My recent e-blast message regarding the hugely delayed “October” issue of *CWJ* wasn't intended as a hint for sympathy – but oh my, the flood of messages from our amazing members both touched and warmed me. Thank you, thank you, thank you all for your words of encouragement. They have been a soothing balm in this time of transition and are deeply appreciated.

And now for the news: the “October” issue of *CW Journal* will go to press this month, February 2021. (If you think you hear cheering as you read that, it's probably coming from me.) The “February” issue will follow closely on its heels, going toward the end of the month of March. After that, our issues of *CWJ* will be timed more in accordance with the dates printed on their covers.

As you may remember, the “October” issue has a theme: double weave. The articles inside are varied and exciting and they lead me to believe that a number of us have been spending our lockdown time at the loom, weaving more than one layer of cloth at a time. The articles are eye-opening and stunning. There's truly something in there for everyone, all in double weave. Stay tuned – the wait will be worth it.

So many weavers responded to the call for double weave articles that the “February” issue will also feature double weave – a second wave of beauty and inspiration. In addition to double weave, though, you will see explorations in pseudo-damask, weaving in three dimensions and working with quad-axial weaving. It's coming this spring, directly to your mailbox.

Once again, thank you all for your support, your inspiration and your generous contributions to the pages of *Complex Weavers Journal*. On the human level and as weavers, our organization is truly amazing.

Ruth MacGregor
CW Journal Editor

CW Study Groups

The Bateman Group is open to new members. We have a limit of 20, total. We will be studying Multiple Tabby Weaves in 2021, Monograph 35. It's the first monograph, but not the easiest.

For more information contact Meg Wilson at weavergamp@me.com

LIBRARIAN'S CORNER

I'd like to start this column out with thanks to all the borrowers who made these times of isolation more enjoyable for me. Perhaps I got too chatty while conducting library business, but it helped me knowing that weavers across the country were carrying on and being creative. Some of you borrowed books early in the pandemic. If you've had them for more than a few months and haven't emailed me to renew them, I'd like to encourage you to return them before I have to write you a personal note, or, worse, publish lists in the newsletter. Check your shelves even if you think you're on top of things.

As we are, in some part, an aging population, I'd like to bring up a second order of business — I want to revisit the procedure for donating material to the library. Please, **do not** just ship me boxes of books, samples and ephemera. Instead, begin by inventorying the part of your collection you would like to offer the library and prepare a neat, concise, orderly list. If you want to be kind to the librarian, check [LibraryThing](#) to see if we already have the item(s). Remember, the library is a combination research library for weaving books (new and old) and an archive of study group swatches. If your item doesn't fit those categories, it probably isn't appropriate. Next, email the list to the librarian and be patient while the offer is evaluated for suitability. Box and send the materials only **after** you have heard back from the librarian. The library currently occupies about 120 square feet. Most of the shelf space is in use. Additionally, the library is crowding my weaving space. I took down one loom to fit the bookshelves in- I need my other loom to weave on-- or, what's the point.

And finally, we welcomed a donation by Deborah Silver. Deborah Silver is one of many authors who are members of Complex Weavers. She has donated a copy of her new (2019) book *the Techniques of Split-shed Weaving*. I don't intend to write a book review (although I think somebody should) other than to say that this book contains simple, well explained directions for expanding the patterning capability of 4 shaft looms. It expands on Jane Evans' and Nancy Searles' techniques. The woven examples are all quite choice. I recommend borrowing this book.

As always, I look forward to any correspondence related to the library, and I love to hear about your projects.

With all due respect, respectfully submitted by your respectful librarian,
Jean Hosford

Board Happenings January Board Meeting

continued

CW Journal:

CW Journal Editor Ruth MacGregor reported that the October and February issues of the *Journal* are coming out late for several reasons. An email has been sent to all CW members explaining these reasons.

Library Report:

CW Librarian Jean Hosford reported there were 56 borrowing occasions by 44 individuals in 2020. The Library's collection of *Shuttle Spindle & Dye* issues will be eliminated from the Library, as no one has checked out an issue in the last five years. They will be offered to local guilds or fiber schools.

Website Report:

CW Web Chair Cally Booker reported there were 33,153 visits to the website in 2020, with a peak in December owing to views of Kay Faulkner's manuscript titled "Weave to Dye", which was posted to the website December 8. Cally also reported there were 4,869 visitors to the online exhibition of *Complexity 2020* between June 29 and September 1.

Digitizing the Study Group Library Collection:

A committee has been formed to determine guidelines for digitizing the Study Group Library collection. Committee members include: 1st Vice President and Social Media Chair, Eileen Driscoll; Member-at-Large, Alison Giachetti; 2nd Vice President, Alice van Duijnen; Study Group Coordinator, Elaine Plaisance; and *CW Journal* Editor, Ruth MacGregor.

Posting of CW Member Publications and Electronic Files:

The Board approved a motion to add to its Membership Directory a component that will allow members to upload to their Member Profile Page up to three electronic publications or files that will be available directly only to CW members. Allowable size and best mechanism for delivery are to be determined.

Janet Bealer
Secretary



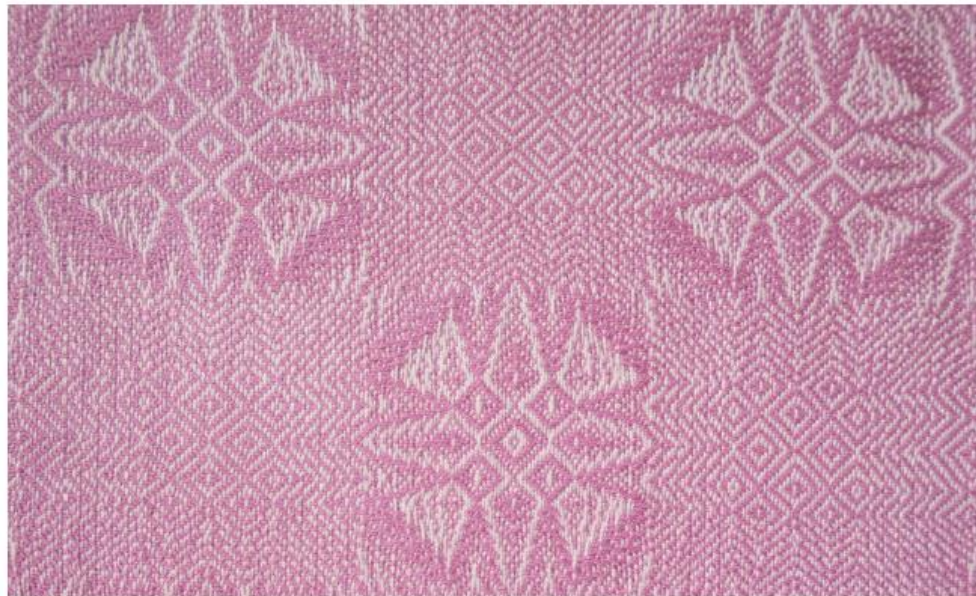
New CW book in honor of Wanda Shelp and our 40th anniversary

Eight Shafts Beyond the Beginning: Personal Approaches to Design

Enjoy how 72 weavers approach design. The first half of the book encompasses 8-shaft work with emphasis on controlling straight and curved lines to form motifs, using color, and adding personal touches. The second half takes 8-shaft components to 10 to 40 shafts, drawlooms, Jacquards, ply-splitting, and twining through the use of interleaving, tied work, networking, block substitution, graphic (Photoshop) approaches, layering, and other design techniques.



Top, Lynn Smetko
Bottom, Dorothy Solbrig



Above, Peg MacMorris
Right, Lesley Willcock

Publication Coming Soon!

- If you have pre-ordered the book, you will be contacted by email as soon as it's ready to ship.
- Otherwise, once it's in print, you can order it from our website: complex-weavers.org/market
- All who have pre-ordered the book will receive an invoice by email prior to shipping.

Classifieds

Ply-Splitting from Drawdowns: Interpreting Weave Structures in Ply-Split Braiding by Barbara J. Walker

Learn how to use any single layer drawdown for ply-splitting. Many illustrations and photos guide you through the process. Finishing techniques are included and gallery pages inspire. \$34 USD plus shipping. www.barbarajwalker.com

Supplementary Warp Patterning: Turned Drafts, Embellishments & Motifs by Barbara J. Walker

This comprehensive book by the authority on supplementary warp weaving will teach you that two (or more) warps are indeed better than one. Chapters on methods, design and warping are included. \$35 USD plus shipping. www.lulu.com Enter the book title.

Spinning Wheel Sleuth: HAND LOOMS, SUPPLEMENT #22. \$10

The Loom Built by Lars Hokanson; Devereux Mansion Looms Revisited; Barbour Linen Looms; School Desk Loom; The Loom Manual Library of Janet Meany. Hand Looms, Supplements #1 to #10, on flash drive. \$15.

Make checks payable to and mail to The Spinning Wheel Sleuth, P. O. Box 422, Andover, MA 01810. Or via PayPal at www.spwhsl.com.

The Draughts of Jeremiah Fielding 1775 edited by Pat Foster, Janet Dunbar and Lynne Harper.

This spiral bound book contains over 50 weaving drafts assembled in 1775 by a Lancashire weaver. The original drafts, modern versions and photographs of modern woven samples are shown.

See <https://www.patfosterweaverdyer.com/>

Your *Journal*: Share Your Weaving Knowledge and Experiences

Inside every CW member is a story and wealth of knowledge! Sharing our experience and knowledge is the heart of CW - unlike other publications, we do not solicit articles from individuals outside our organization. In an effort to “share information and encourage interests”, Complex Weavers welcomes articles from individual weavers as well as study group members. Material for the *Journal* is given priority according to the date received. Late or lengthy submissions are subject to available space. Classified and commercial advertisements should be sent to the Advertising Manager. Address changes may be made by logging on to the website and updating your member profile or by contacting the Membership Chair. If you do not receive your *Journal* when you think you should, please sign in to the Membership directory to confirm that your membership and contact information are current.

2021-2022 Publication Schedule:

June 2021: Deadline March 31, 2021

October 2021: Deadline July 31, 2021

February 2022: Deadline November 30, 2021

Journal Editor: Ruth MacGregor at CWJournalEditorRM@gmail.com

Newsletter Editor: Ingrid Knox at ingridknox99@gmail.com

Editing Team: Mimi Smith, Janet Stollnitz and Prue Hill

Pat Stewart, indexer.

Advertising: Angela Schneider at ComplexWeaversAds@gmail.com

Membership/Mailing List: Amy Norris at

CWMembership@amyfibre.com

Printing and Distribution: Lynn Smetko at

CWPresidentLFS@gmail.com

CW *Journal* Article Guidelines are posted on the CW website or can be obtained from the Editor. Please consult them before starting or submitting your article. The Guidelines will answer a lot of your questions and save you time. Your *Journal* staff, all volunteers, are ready and eager to help you with a contribution.