

COMPLEX WEAVERS

Encouraging curiosity, exploration, innovation in weaving

December 2020 | Number 130



Newsletter

In this issue

President's Letter
Passings
Board Happenings
Complexity 2022
CW Study Groups
Treasurer's Report and
Proposed 2021 Budget
Librarian's Corner
Events
40th Anniversary Book
Classifieds

President's Letter

Greetings Complex Weavers!

Moving along in our Covid World is very interesting. It has been so much fun to see a lot of weaving activities now being held on Zoom. What has been even more amazing is to know how many people are taking advantage of this opportunity. When one realizes most of us never even thought about using Zoom to connect with our weaving communities eight months ago. Talk about a learning curve and progress!

Our Virtual *Complexity* show was a huge success! The exhibition was 'open' at complexityexhibition.org from 29 June – 1 September 2020. In total we had 4,869 visitors to the website during this period. We are very grateful to those who were involved in putting together the virtual *Complexity* Show. It is fun to know our work had an extended audience. It was a great show!

Some happenings from our recent Board of Directors meeting: Last Spring we lost a valuable CW member, Sandra Rude. At the direction of Sandra and Mike Rude, we have established the Sandra Rude Memorial Fund for Advanced Learning. A committee, headed by Mimi Anderson, is now working on guidelines for using this generous gift to CW.

We are starting a trial to help with mailing costs of our library materials to non-US members. This trial run will go for a one year time frame, at which point it will be evaluated. Hopefully, this will put all CW members on equal footing in using our extensive library. We created a new committee, Financial Strategy & Investing (FS&I) Committee, to oversee and act as a consultant for managing CW Funds. Alison Giachetti has been appointed chairperson of this committee.

Board Happenings October Board Meeting

October 5 - 27, 2020

An update: the 40th Anniversary Book is still in progress. Do know this book is almost completed, but a couple of more jobs need to be completed prior to it going to press. We will keep you updated on the future publication date.

Keep these dates in mind! *CW Seminars 2022* is scheduled to happen July 10 through July 13, 2022 in Knoxville, TN. A committee is in place and work has begun to give our members a fantastic Seminars experience.

We are hoping we can pick up a few members to follow the process as we move along, and then those shadowing could slide into leadership roles for the 2024 Seminars. Please consider being one of those members, and let Cathy McCarthy, CW2022ctm@icloud.com, or Mimi Anderson mimi_anderson@mac.com know of your desire to assist in this planning. That's it for now. Wishing each and everyone of you a wonderful fiber journey as you continue to stay safe and healthy!

Sincerely,

Cathy

Cathy McCarthy
cw2022ctm@icloud.com

Passings - Nancy Rose

It is with great sadness that I announce Nancy Rose's passing. She wasn't on Facebook, and may not have been a WeaveTech member, but she had been a Complex Weaver for many, many years. Nancy was known personally by many weavers. She was very good at her craft and a great person to boot. Nancy and I were CompuServe friends; we met in person at Convergence in Atlanta. I visited her many times in Chicago and I will miss her dearly.

Maryse Levenson



Treasurer's Report and 2021 Budget: The Board approved the third quarter Treasurer's Report and revised 2021 Budget submitted by Treasurer Linda Kaufman.

FS&I Policy and Charter: The Board approved the Financial Strategy & Investing Charter and Policy submitted by FS&I Chair Alison Giachetti.

2020-22 Strategic Plan: The Board approved a corrected and updated Strategic Plan for 2020-22.

Seminars 2022: CW President Cathy McCarthy and Past President Mimi Anderson will chair *Seminars 2022*, which will be held in Knoxville, Tennessee, July 10-13, 2022. They asked Board members to recommend volunteers to shadow them in order to be able to assume responsibility for Seminars 2024.

Complexity 2022: *Complexity 2022* Chair Karen Donde reported that prospectus revisions and recruitment of volunteer committee members are ongoing. The Board approved a motion that the Diane Fabeck Award for *Complexity 2022* be given for Best of Show. *Complexity 2020* Online: Webmaster Cally Booker reported that the exhibition, which was open online from June 29 until September 1, was viewed by 4,869 visitors.

Memorial Fund: The Board approved the nomination of Mimi Anderson to chair the Sandra Rude Memorial Fund for Advanced Learning. The Fund Committee will report back to the Board in January 2021 on progress made to establish guidelines for obtaining a grant through the Fund.

Library Postage Subsidy: The Board approved a one-year trial to subsidize outbound and return shipping of CW library materials between the Library and CW members not living in the United States. The subsidy covers one outbound and return shipment per borrower and totals the cost difference between domestic and international shipments. It is capped at the total cost of the outbound international shipment.

Janet Bealer, Secretary

Complexity 2022—Diane Fabeck Award Designation

At *Complexity 2016*, the first Diane Fabeck Best of Show Award was given to Robin Haller for “3 Caged Birds.” In 2018, it was awarded to Molly McLaughlin for “Fireflies and Jellyfish,” and in 2020 to Inge Dam for “Twists and Turns.”

Funding for five \$500 *Complexity* awards was given by Joe Fabeck in honor of his wife, Diane, a founder, former treasurer for Complex Weavers and weaver for nearly 50 years. Diane passed away in April 2019 from complications related to Alzheimer’s Disease.



Twists and Turns by Inge Dam



Twists and Turns—detail

Prior to each *Complexity* exhibit, the CW Board is charged with designating the area of weaving to be recognized. At its October 2020 meeting, the board voted that for *Complexity 2022*, the Diane Fabeck Award will continue to honor the piece selected by jurors as Best of Show.

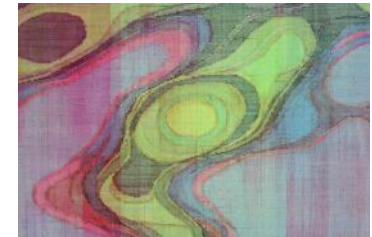
In addition to the Diane Fabeck Best of Show Award, other *Complexity* awards include 1st, 2nd and 3rd places, the Complex Weavers award and sponsored awards. All pieces juried into each *Complexity* exhibit are considered by jurors for award selection, and the criteria for awards is the same as for the exhibit:

- Originality of design
- Effective use of complexity through weave structure
- Technical excellence
- Visual impact
- Effective use of color palette
- Surface embellishments and construction techniques that aesthetically enhance the work.

Jurors are asked to select award winners based on who they think achieved the highest levels for those criteria. Members have about a year to design and execute work for entry to *Complexity 2022*. As we ponder that challenge, mindful of those criteria, we should take inspiration from the work accepted and awarded in past exhibitions. Find images in the [Complexity gallery archive](#) on the website.



Fireflies and Jellyfish by Molly McLaughlin



Fireflies and Jellyfish—detail

The *Complexity 2022* committee is coming together, but we welcome your participation in helping plan this exciting exhibition. And, yes, committee members may enter.

[Karen Donde](#), *Complexity 2022* Chair



3 Caged Birds by Robin Haller



3 Caged Birds detail

November 2020 Update on Study Groups

The **Dimensional Texture Group** rounded off its study of stitched double cloth with its first sample exchange this summer, showing a wonderful range of textures achieved using that technique. The topic for study for 2020-21 is waffle weave. There are still a couple of spaces left in the group so do contact Wendy Morris (wendy@wendymorris.co.uk) if you'd like to join."

Bateman Study Group will be looking at Monograph 35, Multiple Tabby Weaves. The group is limited at 20 members and will complete one sample due in the Fall of 2021. We communicate through Groups.io.

The **Doubleweave Study Group** has been studying layer exchange and deflected double weave recently. For the results, watch out for the next CW Journal.

The **Tied Weave and Beyond Group** is focusing on design and drafting of various Tied Weaves as well as giving our new members support and time to get a good foundation in the way Tied Weave systems work. We have a diversity of skill levels in the group and are having monthly Zoom meetings to talk things over. Everyone is encouraged to prep whatever they wish to talk about and be ready with samples, drafts and questions.

The **Beriau Study Group** just keeps plugging along with drafts. Our pieces were scheduled as an exhibit at the Weaving History Conference, in Clayton, NY, in May 2020. That of course was cancelled. We are planning on another chance for this in 2021. Only the gods know if that will be happening.

The **Twenty-Four, More or Less Study Group** has 29 active members this coming year including three new members. Our membership is limited to 30 members. We have no set agenda, leaving each member to experiment on their own as long as the sample is 17 or more shafts (excluding selvages).

Sample Exchange the Old Fashioned Way is back to doing samples for 2020 and samples have started to arrive. This is a small group which lends itself to trying new ideas and pushing the envelope in weaving. No theme just a self-directed opportunity to explore new techniques, structures or even styles.

Early Weaving Books and Manuscripts is chugging along as usual. Structures is still available for independent study. It is a self-paced study of weave structures and their derivatives, while learning to use your computer weaving program in the process.

Our Fine Threads Study Group will accept members for the 2021 sample exchange through the end of December 2020. In January the leader sends out a current roster so they know how many samples are due in May.

The **Coverlets and Counterpanes Group** continues to share information through the group's newsletters and sample exchanges. The only requirement is the desire to learn and share information about 19th century coverlets and counterpanes and the members' related weaving.

The 2021 theme for the **Designing Fabrics Study Group** is "The Third Dimension."

The **Sixteens Study Group** has just completed our 2020 satins exchange and had our first Zoom November meeting. It was so nice to be able to put faces and voices to names on paper and discuss the samples. We had a great turnout and will be meeting again next month as we choose our 2021 topic when members will be able to present arguments in favour of their preferred topic before we take our final vote – much more interactive and engaging than doing it all by messaging.

The **Beyond Plain Weave Garments Group** will be doing its sample exchange this November, and it plans two more in 2021, for May and November.

Treasurer Report, 3rd Quarter 2020

This quarter we added a new restricted fund – The Sandra Rude Memorial Scholarship Fund. As of the end of the quarter, it had a balance of \$720; donations given in Sandra’s memory by her friends and our own members. Sandra’s husband Mike will be adding to the fund with the proceeds from the sale of her looms and yarn. We recently received \$8,494.00 from Mike, making the balance as of 10/7 at \$9,214.00.

If you have any questions, please let me know.

Linda Kaufman, Treasurer

Complex Weavers Balance Sheet Standard As of September 30, 2020

Assets	
Current Assets	
PayPal	\$10,785.87
Checking/Savings	
Bank of America Checking	\$42,766.61
Bank of America Savings	\$314,038.65
Total Current Assets	\$367,591.13
Total Assets	\$367,591.13

Liabilities and Equity

Liabilities	
Current Liabilities	
Credit Cards	
BoA Visa	\$0.00
Total Credit Cards	\$0.00
Total Current Liabilities	\$0.00
Total Liabilities	\$0.00

Equity	
Retained Earnings	\$339,192.38
Net Income	\$28,398.75
Total Equity	\$367,591.13
Total Liabilities and Equity	\$367,591.13

Restricted Fund Balances in Savings As of 9/30/2020

Complexity Fund	\$25,822.29
Scholarship/Friendship Fund	\$575.12
Memorial Fund	\$500.00
Silent Auction Fund	\$23,277.95
Diane Fabeck Fund	\$1,000.00
Kathi Spangler Fund	\$850.00
Manuscript Recovery Fund	\$3,500.00
Sandra Rude Memorial Scholarship Fund	\$720.00

Consider a Donation to CW

Our website now has the capability to accept online donations.

There are five funds to choose from, described here:

<https://www.complex-weavers.org/donate-to-cw/funds/>

The link to make a donation is:

<https://www.complex-weavers.org/donate-to-cw/>

Please consider a contribution to the fund of your choice to support the mission of CW and the many services provided to its members.

Thank You!

Complex Weavers 2021 Proposed Budget

	2020 Budget	Year to Date	% of Budget	2021 Budget
Income				
CW Publications (Journal and Newsletter Ads)	4,000.00	3,097.50	77.4%	4,000.00
Membership	40,000.00	35,030.00	87.6%	45,000.00
Bank Interest	200.00	32.25	16.1%	100.00
40 th Anniversary Book	20,000.00	0.00	0.0%	20,000.00
CW Merchandise	2,000.00	950.37	47.5%	1,500.00
Donations	1,450.00	10,701.00	738.0%	3,000.00
Total Income (Before Seminars and Complexity)	67,650.00	49,811.12	67.7%	73,600.00
Seminars 2020	89,400.00	17,884.51	20.0%	0.00
Complexity 2020	5,285.00	522.29	9.9%	0.00
Total Income	162,335.00	68,217.92	42.0%	73,600.00

Complex Weavers 2021 Proposed Budget, continued

Expenses	2020 Budget	Year to Date	% of Budget	2021 Budget
CW Publications	30,000.00	14,644.41	48.8%	25,000.00
Merchandise	0.00	0.00	0.0%	0.00
40 th Anniversary Book	32,000.00	0.00	0.0%	32,000.00
Fees	1,700.00	1,272.56	74.9%	1,700.00
Postage	500.00	156.93	31.4%	500.00
Membership Expenses	200.00	0.00	0.0%	200.00
Computer/Web	2,500.00	1,448.39	57.9%	2,500.00
Awards	250.00	113.86	45.5%	250.00
Publicity	500.00	0.00	0.0%	500.00
Taxes/Legal	100.00	0.00	0.0%	100.00
Election	750.00	661.20	88.2%	750.00
Officers	300.00	0.00	0.0%	300.00
Library	100.00	0.00	0.0%	400.00
HGA Membership	100.00	141.00	141.0%	100.00
Professional Services (Contractors)	500.00	0.00	0.0%	500.00
Colorado Business License	10.00	10.00	100.0%	10.00
Total Expenses (Before Seminars and Complexity)	69,510.00	18,448.35	26.5%	64,810.00
Seminars	81,000.00	1,953.38	2.4%	7,000.00
Complexity	10,343.00	5,422.59	52.4%	1,000.00
Total Expenses	160,853.00	25,824.32	16.1%	72,810.00
Net Gain/Loss	1,482.00	42,393.60		790.00

LIBRARIAN'S CORNER

Usually, I fill most of this column with news of recent donations to the library- and I will get to that later- but this time, I'd like to announce some really exciting news! The Complex Weaver's Board of Directors recently approved a subsidy for international members to allow them to borrow books at a rate comparable to that which members in the continental US pay. Postal charges international members have pretty much precluded any borrowing, except for CD's.

Since this program falls into uncharted territory, the Board has proposed, for the first year, to subsidize the difference in cost (round trip) between of a US borrower and that of the international borrower. The maximum subsidy will be the cost of the outgoing postage. In other words, CW will pay to ship the book or study group material, but not help with the return postage. If a chart would help clarify:

	Outgoing	Return*	Total postage	International - US	Subsidy
US member	\$15	\$15	\$30	--	--
International member1	\$15	\$15	\$30	\$30-\$30=\$0	\$0
International member2	\$20	\$20	\$40	\$40-\$30=\$10	\$10
International member3	\$30	\$30	\$60	\$60-\$30=\$30	\$30
International member4	\$35	\$35	\$70	\$70-\$30=\$40	\$35

*Return Postage assumed to be the same as \$US postage for simplicity in calculations.

Overseas members will be limited to one subsidized borrowing event per year. As we have never done this before, these are guidelines that seem reasonable, but as the project evolves it may be necessary to modify them. A tentative budget has been set, but it too may need to be adjusted depending on the level of use.

And now, an acknowledgement of new donations. Cory Zann donated copies of the magazine *The Weaver* that expand and fill in gaps in our collection. *The Weaver* is one of the early publications that focused on weaving. It was published from 1936 through 1942 by Emile Bernat & Sons and it has a profusion of articles by the 'old greats' such as: Hickman, Atwater, Estes, Johnson, etc. It is a rich resource for those studying the old masters. Cory also donated a few copies of *The Handicrafter*, another publication by Emile Bernat & Sons from a slightly earlier era than *The Weaver*. While this publication covers a wide range of handicrafts, weaving articles are well represented, written by many of the same cast.

As many aging weavers find themselves doing, Marion Marzolf is winnowing through a lifetime of weaving and associated objects. Although she is not a member of Complex Weavers, she donated her copy of Florence Montgomery's *Textiles in America 1650-1870*. This book is an encyclopedic dictionary of textiles encompassing photographs of old swatch books, paintings, prints, designer pattern books, etc. The photographs of fabrics are so crisp you can almost analyze them. Where else would you find out what erminette, orleans or parramatta were?

As always, I look forward to any correspondence related to the library and I love to hear about your projects.

With all due respect, respectfully submitted by your respected librarian,

Jean Hosford

Events

Association of Northwest Weavers Guilds

The 2021 ANWG Conference Steering Committee has announce that the **2021 ANWG Conference** has been rescheduled to the summer of 2023. <https://northwestweavers.org/>

MidAtlantic Fiber Association: The MAFA 2021 Conference Is Going Virtual!

The MAFA board has decided to plan a new virtual event for June 24-27, 2021. The event will have four days of lectures, short programs and classes, and some longer one or two day workshops. There will also be key-note addresses, exhibits, vendors, demos, and informal gatherings. Details will be available after the first of the year and registration will open early-Spring. <https://mafafiber.org/>



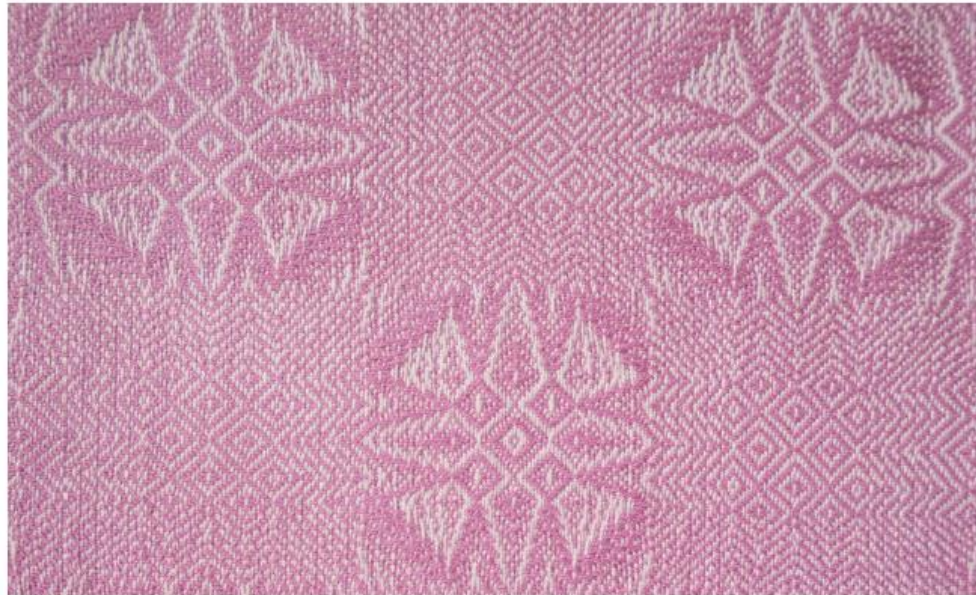
New CW book in honor of Wanda Shelp and our 40th anniversary

Eight Shafts Beyond the Beginning: Personal Approaches to Design

Enjoy how 72 weavers approach design. The first half of the book encompasses 8-shaft work with emphasis on controlling straight and curved lines to form motifs, using color, and adding personal touches. The second half takes 8-shaft components to 10 to 40 shafts, drawlooms, Jacquards, ply-splitting, and twining through the use of interleaving, tied work, networking, block substitution, graphic (Photoshop) approaches, layering, and other design techniques.



Top, Lynn Smetko
Bottom, Dorothy Solbrig



Above, Peg MacMorris
Right, Lesley Willcock

Publication Coming Soon!

- If you have pre-ordered the book, you will be contacted by email as soon as it's ready to ship.
- Otherwise, once it's in print, you can order it from our website: complex-weavers.org/market
Retail is \$39.95, plus shipping.
- All who have pre-ordered the book will receive an invoice by email prior to shipping.

Classifieds

Ply-Splitting from Drawdowns: Interpreting Weave Structures in Ply-Split Braiding by Barbara J. Walker

Learn how to use any single layer drawdown for ply-splitting. Many illustrations and photos guide you through the process. Finishing techniques are included and gallery pages inspire. \$34 USD plus shipping. www.barbarajwalker.com

Supplementary Warp Patterning: Turned Drafts, Embellishments & Motifs by Barbara J. Walker

This comprehensive book by the authority on supplementary warp weaving will teach you that two (or more) warps are indeed better than one. Chapters on methods, design, and warping are included. \$35 USD plus shipping. www.lulu.com Enter the book title.

Spinning Wheel Sleuth: HAND LOOMS, SUPPLEMENT #22. \$10

The Loom Built by Lars Hokanson; Devereux Mansion Looms Revisited; Barbour Linen Looms; School Desk Loom; The Loom Manual Library of Janet Meany. Hand Looms, Supplements #1 to #10, on flash drive. \$15.

Make checks payable to and mail to The Spinning Wheel Sleuth, P. O. Box 422, Andover, MA 01810. Or via PayPal at www.spwhsl.com.

The Draughts of Jeremiah Fielding 1775 edited by Pat Foster, Janet Dunbar and Lynne Harper.

This spiral bound book contains over 50 weaving drafts assembled in 1775 by a Lancashire weaver. The original drafts, modern versions, and photographs of modern woven samples are shown.

See <https://www.patfosterweaverdyer.com/>

Your *Journal*: Share Your Weaving Knowledge and Experiences

Inside every CW member is a story and wealth of knowledge! Sharing our experience and knowledge is the heart of CW - unlike other publications, we do not solicit articles from individuals outside our organization. In an effort to “share information and encourage interests”, Complex Weavers welcomes articles from individual weavers as well as study group members. Material for the *Journal* is given priority according to the date received. Late or lengthy submissions are subject to available space. Classified and commercial advertisements should be sent to the Advertising Manager. Address changes may be made by logging on to the website and updating your member profile or by contacting the Membership Chair. If you do not receive your *Journal* when you think you should, please sign in to the Membership directory to confirm that your membership and contact information are current.

20201-2022 Publication Schedule:

June 2021: Deadline March 31, 2021

October 2021: Deadline July 31, 2021

February 2022: Deadline November 30, 2021

Journal Editor: Ruth MacGregor at CWJournalEditorRM@gmail.com

Newsletter Editor: Ingrid Knox at ingridknox99@gmail.com

Editing Team: Mimi Smith, Janet Stollnitz, Prue Hill, and Elaine Plaisance

Advertising: Angela Schneider at ComplexWeaversAds@gmail.com

Membership/Mailing List: Amy Norris at

CWMembership@amyfibre.com

Printing and Distribution: Lynn Smetko at CWPresident-LFS@gmail.com

CW *Journal* Article Guidelines are posted on the CW website or can be obtained from the Editor. Please consult them before starting or submitting your article. The Guidelines will answer a lot of your questions and save you time. Your *Journal* staff, all volunteers, are ready and eager to help you with a contribution.