

COMPLEX WEAVERS

Encouraging curiosity, exploration, innovation in weaving

September 2020 | Number 129



Newsletter

In this issue

President's Letter
Treasurer's Report
Board Happenings
Call for Nominations
Complexity 2020-2022
Passings
New Grant Opportunity
CW Seminars 2022
Events and Exhibitions
CW Study Groups
40th Anniversary Book
Classifieds

President's Letter

Greetings Complex Weavers,

As we move through Summer of 2020 we are in some very interesting times. Social distancing, sheltering in place, not being able to meet up with our friends and having to plan carefully whenever we need to do something outside of our residence. Not knowing how long this will be happening and just plain not knowing is uncharted territory for us. Who would ever have imagined we would see something like this happen in our life time? There is a silver lining to this cloud hanging over us. We are lucky because we can weave!

COVID-19 wrecked havoc with our 2020 Seminars and that found your Board of Directors scrambling for ways to adjust to not being physically able to meet for our Annual Meeting. Your past president, Mimi Anderson went into overdrive learning all she could about Zoom meetings and Zoom Webinars. She made certain our Annual Meeting went on, although not quite as planned. It is quite amazing we live in the times we do. Can you imagine having the capability to do something like that Webinar ten or fifteen years ago? Am betting many of you never ever imagined something like that would have been possible back then.

Now switching gears. A big Thank You is in order to Lynn Smetko, Past President, who has gone off our Board after many years of service to CW. A Thank You also goes out to Dianne Totten for her years of service to CW, most recently as 1st Vice President. Finally, thank you is due to Kathleen Groves for her willingness to serve as your Secretary. Unfortunately due to life circumstances she had to step away from this job. You will be missed, Kathleen.

And as some go off the Board, other people enter. It is wonderful to welcome Mimi Anderson to the Past President position. Mimi brings to the current Board a wealth of information and experience for which we are most grateful! Stepping into the 1st Vice President Role is Eileen Driscoll. Not only that, but she has also stepped into the role as our Social Media Director. We are very happy to have her on Board for both of these positions. Janet Bealer Rodie is filling out the rest of the Secretary position term. Cathy McCarthy is our president for 2020-2022.

The rest of our Board of Directors are: 2nd Vice President, Alice van Duijnen; Treasurer, Linda Kaufman; Study Group Coordinator, Elaine Plaisance; Director-at-Large, Alison Giachetti and Immediate Past President, Mimi Anderson.

Rounding out the Board of Directors Committee Chairs are: Advertising, Angela Schneider; Awards, Ginger Kaldenbach; Complexity, Karen Donde; CW Journal, Ruth MacGregor; CW Website, Cally Booker; Library, Jean Hosford; Manuscript, Marjie Thompson; Membership, Amy Norris; Merchandising, Amy Norris; Newsletter, Ingrid Knox; CW 2022 Seminars, Michele Belson and Paula Heller; Social Media, Eileen Driscoll.

From the list above Complex Weavers welcomes Karen Donde, Ingrid Knox, Janet Bealer Rodie, Michele Belson and Paula Heller as new members of the BOD. We welcome you and thank you for your willingness to serve Complex Weavers!

There are other CW positions that needed filling, and many have stepped forward. For our Nominating Committee, Sue Mansfield, from the USA, has agreed to chair that committee. Joining her is Jean Curry from Canada, and Lesley Willcock from UK. We are very happy you are able to serve on this committee.

Complexity Chairperson is a big job to fill for our organization. Not only has Karen Donde stepped forward for this job, but she has already begun to put her team together for 2022. Make sure to help her out if you are asked! Remember, we are an All Volunteer Organization. We need you!

Complex Weavers is in great shape. New Members keep signing up, and as we move forward it is so wonderful to have you all joined together!

Happy Weaving!

Cathy

Cathy McCarthy

cw2022ctm@icloud.com

Treasurer's Report 2nd Quarter 2020

Here is the 2nd Quarter Report for 2020. Thanks to the generosity of our members we earned a net \$4,984.15 on *Seminars*. They were also very generous with donations to the *Complexity* Fund to offset those expenses. Any costs for *Complexity* are covered by the Complexity Fund and the Silent Auction Fund.

Linda Kaufman
Treasurer

The current bank account balances as of the end of the 2nd Quarter of 2020 are:

PayPal	\$ 11,016.45
Checking	\$ 14,145.17
Savings	\$ 314,030.76
Banking Total	<u>\$ 339,192.38</u>
Seminars Registration Fees	\$ 16,179.08
Total Funds	<u>\$ 355,371.46</u>

The current balances in the Restricted Funds are:

Complexity Fund	\$ 25,672.29
Manuscript Recovery Fund	\$ 3,500.00
Scholarship (Friendship Fund)	\$ 575.12
Memorial Fund	\$ 500.00
Silent Auction Fund	\$ 23,477.95
Kathi Spangler Fund	\$ 850.00
Diane Fabeck Fund	\$ 1,000.00
Total Restricted Funds	<u>\$ 55,575.36</u>

Board Happenings

July Board Meeting
July 28, 2020 to August 12, 2020

Annual Meeting: Due to the cancellation of *Seminars 2020*, the Complex Weavers 2020 Annual Meeting was held virtually via Zoom on July 22, 2020.

Treasurer's Report: The Board approved a revised second quarter Treasurer's Report from the Treasurer.

Seminars 2022: The event will be held in Knoxville, Tennessee, July 10-13, 2022. A *Seminars 2022* Chairperson has not yet been appointed. The major elements of *Seminars 2020* will be carried over to 2022. The Board approved the creation of a new committee to explore adding a virtual component to the physical CW *Seminars*.

Complexity 2022: Karen Donde will serve as Chairperson of *Complexity 2022*. Revised wording in the prospectus will clarify criteria for submissions to the exhibit. A proposal has been made to offer an online component of the exhibit, similar to the virtual *Complexity 2020* exhibit that was organized when the physical exhibit was cancelled due to COVID-19.

Memorial Fund: The Board approved the establishment of the Sandra Rude Memorial Fund for Advanced Learning, with the aim of funding an annual grant to a deserving applicant, either teacher or student. A committee to develop guidelines, applications and rating criteria and review applicants will include three or four members of the Board and Mike Rude, Sandra's husband.

Library Postage Subsidy: The Board approved the creation of an annual expense line item in the budget in order to subsidize shipping costs of sending CW library materials to non-US residents. This item will be added to the proposed budget to be voted on at the October Board meeting.

CW Journal: Following a successful trial run of mailing issues of the *CW Journal* via First Class US Mail to Canadian members, those members will continue to receive the magazine via that route, which saves both time in transit and postage costs.

Janet Bealer, Secretary

Call for Nominations

The following positions are due for election in 2021:

- 2nd Vice-President
- Secretary
- Treasurer
- Study Group Coordinator

If you are interested in one of these positions, or if you know someone you would like to see in office, please let the Nomination Committee know by 30 November 2020.

Ballots will be distributed electronically in March and voting will take place in April 2021.

2021 Nominating Committee members:

Sue Mansfield, Chair (US)

Lesley Willcock (UK)

Jean Curry (CAN)

For more information on what these roles entail or to nominate someone, contact the Nominating Committee Chair using the Contact link on the CW website. (<https://www.complex-weavers.org/>)

Complex Weavers would not exist without volunteers!

Please consider running if you are asked, or volunteering if you have an interest. **Thank you!**

Consider a Donation to CW

Our website now has the capability to accept online donations.

There are five funds to choose from, described here:

<https://www.complex-weavers.org/donate-to-cw/funds/>

The link to make a donation is:

<https://www.complex-weavers.org/donate-to-cw/>

Please consider a contribution to the fund of your choice to support the mission of CW and the many services provided to its members.

Thank You!

Complexity 2020-2022

I am honored to have been appointed by the CW Board to chair the *Complexity 2022* committee and excited to get started. First, I want to acknowledge the *Complexity 2020* committee listed below for responding so quickly and positively to challenges none of us expected, including a late change in venue and resulting reduction of available display space, not to mention the unfortunate cancellation of *Seminars*.

As one of the accepted artists, I am especially grateful for the quick thinking and expeditious work to take the *Complexity 2020* exhibit online. While we missed the opportunity to see this collection up close, as of August 20, the virtual exhibit had reached just over 4,600 people who made a total of 6,000 visits, far more than could ever have seen it in Knoxville.

It has been so successful we are discussing continuation of a virtual exhibit in addition to the live gallery show for 2022. We also have already begun tweaking the prospectus to encourage participation by more members and present an even greater display of weaving innovation and variety.

That will require a team of dedicated committee volunteers. I am so appreciative to those who have already stepped forward. However, we will need help. Thanks to advance work done by the 2020 committee, one of the toughest jobs, securing a venue with space for a wider variety of entries, has already been done. That leaves what I consider the more fun parts. If you would like to help make *Complexity 2022* a success, please [get in touch](#).

Karen Donde
Complexity 2022 Chair

Thanks to the *Complexity 2020* Committee:
Bettes Silver-Schack, Chair Toni Ammons
Susan Bowman Suzi Gough
Jette Vandermeiden Geri Forkner

With help from:
Cathie Chung and Diane Smith - *CW Seminars* co-chairs
Ruth MacGregor - Journal editor/graphics
Cally Booker - Webmaster, who teamed with Bettes and Ruth to create the virtual exhibit.

Passings - Sandra Rude

Sandra Ogg Rude of Atascadero, California passed away at home on July 3, 2020. Sandra was an active weaver, dyer, spinner, and knitter who was known for her complex designs, color sense, and jacquard picture weavings. She was a member of the Central Coast Weavers, HGA, and Complex Weavers. Previously she had been a member of Designing Weavers and Black Sheep Weavers Guild.

Sandra exhibited in high-end craft shows such as the Smithsonian Craft Show and American Craft Council, and in juried and invitational exhibits. Sandra won awards (including the HGA and CW awards) at Convergence and local/regional weaving conferences and she won prizes in fine art exhibits for her jacquard designs. She taught a number of classes and was published in a number of weaving journals and provided help and inspiration to many other weavers through her blog.

Sandra's studio work as Three Springs Handworks included jacquard-woven wall hangings; and scarves, shawls, and table linens woven on a computer-assisted dobby loom. Her designs were inspired by the colors and textures of the natural world; or abstract forms.

Articles by Sandra Rude - from the pages of *Complex Weavers Journal*

All issues listed are available for viewing and download on the CW website.

October 2005 (CWJ 79, p36) -- "Adventures in Parallel Threading, Part I"

February 2006 (CWJ 80, p30) -- "Adventures in Not-So-Parallel Threading, Part II"

February 2009 (CWJ 89, p23) -- "Feathers"

February 2013 (CWJ 101, p50) -- "ITAB: International TECHstyle Art Biennial"

February 2013 (CWJ 101, pp50-51) -- "Using Repper for Jacquard Design"

February 2014 (CWJ 104, p12) -- "En Pointe"

June 2014 (CWJ 105, p2) -- Book Review of *Weaving with Echo and Iris*

February 2016 (CWJ 110, p27) -- "Compass Rose"

June 2018 (CWJ 117, p27) -- "The Sea in My Dream"

New Grant Opportunity Planned

Complex Weavers will be creating a new grant opportunity.

Recently, the Complex Weavers board passed the motion to “establish the **Sandra Rude Memorial Fund for Advanced Learning**. The designated (restricted) fund will be funded by donations to CW in Sandra Rude’s name, and be awarded to grantees as defined by the board, according to Sandra & Mike’s wishes.”

The Board will be working on writing the criteria for the grants, applications, reviewing guidelines, and procedures over the next months. We will announce more details when the process is completed. Anyone can donate to this fund.

The board members expressed admiration for and emotion over Sandra and Mike’s thoughtfulness. It is a wonderful gesture and setting up this kind of grant is a good direction for Complex Weavers to take. It reminds us all of Sandra’s inspiration and willingness to share her knowledge. We are deeply honored.

Seminars 2022 - Breaking News!

We are happy to announce that Michele Belson and Paula Heller will co-chair our 2022 CW Seminars in Knoxville, TN. Make sure if you are approached by them to help out, you join the team! We are looking forward to our best ever Seminar Experience.

They can be contacted by email: ComplexWeaversSeminars@gmail.com

Thank you, Michele and Paula!

Events and Exhibitions

Many museums and other cultural venues are currently closed. Please check the museum’s status before your visit. Many museums have virtual exhibitions or other offerings during this time—a couple are listed below.

Visions from the Loom (Wakefield, RI). This is the 46th anniversary exhibit of all current Saunderstown Weaving School weavers. It will be a different exhibit without a festive opening, but there will be small gallery talks, and a video taken at the school will be available on the Hera Gallery website: <https://www.heragallery.org/>



Delight in Discovery: the Global Collections of Lloyd Cotsen (Washington, D.C.) Lloyd Cotsen assembled thousands of textile fragments, garments, and other artworks that reflected his admiration for indigenous crafts and vanishing artistic traditions. His ultimate goal, however, was to create opportunities for a wider audience to appreciate 3,000 years of human creativity. The Textile Museum through December 23, 2020. <https://museum.gwu.edu/delight>

Ruth Adler Schnee: Modern Designs for Living (Bloomfield Hills, MI) The exhibition presents at its core the body of textile patterns that Adler Schnee has created over the course of her prolific seven-decade career. It affirms her pivotal role in the development of the modern interior. Digital 3-D exhibition at <https://my.matterport.com/show/?m=Qatj9mu3udP&brand=0>

Museum of Art and Design Online Collection of Textiles (New York City) The Museum of Art and Design’s online permanent collection of more than 2,000 objects representing 95% of the museum’s collection is available online, including more than 500 fiber objects. These are both classic and contemporary works by familiar and new artists. <http://collections.madmuseum.org/categories/classifications/Fiber>

2020 Update on Study Groups

Beriau Study Group

The Beriau Study Group is invited to be a featured exhibit next spring at the Handweaving Museum in Clayton, NY. The reception will open the Weaving History Conference, which happens the last week of April. We'll be exhibiting articles made from our historic reproductions and/or our creative interpretations of these drafts.

Early Weaving Books and Manuscripts

The Early Weaving Books and Manuscripts is in its 28th year and still going strong. We have almost 70 members with about 45 who participate in the yearly exchange. And we are ALWAYS on the hunt for more weaving manuscripts. Know of any?

Early American Coverlets and Counterpanes

During the past year the Early American Coverlets and Counterpanes Study group has included a wide variety of articles in their newsletters concerning (1) visits to a museum in North Carolina and one in Kentucky to study counterpanes in their collections, (2) descriptions of coverlet collections, one including overshot coverlets with names, letters or numbers, (3) Interpreting German notation found in Pennsylvania German manuscripts and (4) descriptions of two double woven coverlets on exhibit in Dundas, Ontario, Canada and the families of the two sisters-in-law who received them as marriage coverlets years before they married two brothers.

Kumihimo Study Group

The Kumihimo group had its Marudai exchange in the fall, Not Round - we had square, rectangular, flat, and a triangle!! The International Kumihimo Conference in Iga, Japan, got into our schedules, and then all the coronavirus lockdowns, so our spring Takadai exchange is about getting to the post office.

All of us recruit new members at seminars - we need to think of something this year to put the study groups into people's minds....

Structure Study Group

The Structure Group is self-study and used primarily as a resource.

Designing Fabrics

Designing Fabrics' theme of past year was "100 Years of Bauhaus." We have published a series of articles in the *Complex Weavers Journal* of February 2020. And made it to the cover!

Sample Exchange the Old Fashioned Way Study Group

The Old Fashioned Way Study Group is looking forward to a sample exchange in 2020 after a hiatus in 2019. We are a small group but have added a member. In early March several members decided this was an excellent time to start weaving our samples and based on response of the members, diverse samples are expected. This group is an excellent opportunity to step out of your comfort level and try something new each year.

Dimensional Texture

The Dimensional Texture study group is very new and we've worked to have our first sample exchange this summer - real physical samples because it's so difficult to gauge hand and 3D texture by photos and drafts alone. This year's topic is stitched double cloth for texture and judging from the online conversations we're having in the group it's going to be a fascinating range of samples. We have a wide range of experience in the group, with membership currently capped at 15 to keep the task of weaving samples (which can shrink by 50%) in manageable realms.

Fine Threads Study Group

The Fine Threads Study Group is gathering samples for our annual sample exchange. For the past two years we've had 100% participation.



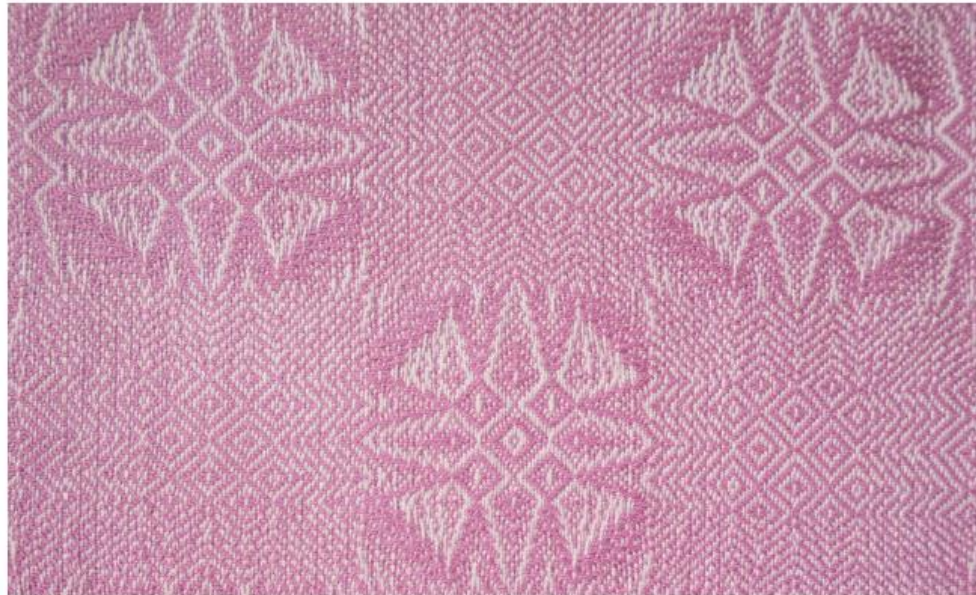
New CW book in honor of Wanda Shelp and our 40th anniversary

Eight Shafts Beyond the Beginning: Personal Approaches to Design

Enjoy how 72 weavers approach design. The first half of the book encompasses 8-shaft work with emphasis on controlling straight and curved lines to form motifs, using color, and adding personal touches. The second half takes 8-shaft components to 10 to 40 shafts, drawlooms, Jacquards, ply-splitting, and twining through the use of interleaving, tied work, networking, block substitution, graphic (Photoshop) approaches, layering, and other design techniques.



Top, Lynn Smetko
Bottom, Dorothy Solbrig



Above, Peg MacMorris
Right, Lesley Willcock

Publication Coming Soon!

- If you have pre-ordered the book, you will be contacted by email as soon as it's ready to ship.
- Otherwise, once it's in print, you can order it from our website: complex-weavers.org/market
Retail is \$39.95, plus shipping.
- All who have pre-ordered the book will receive an invoice by email prior to shipping.

Classifieds

Ply-Splitting from Drawdowns: Interpreting Weave Structures in Ply-Split Braiding by Barbara J. Walker

Learn how to use any single layer drawdown for ply-splitting. Many illustrations and photos guide you through the process. Finishing techniques are included and gallery pages inspire. \$34 USD plus shipping.

www.barbarajwalker.com

Supplementary Warp Patterning: Turned Drafts, Embellishments & Motifs by Barbara J. Walker

This comprehensive book by the authority on supplementary warp weaving will teach you that two (or more) warps are indeed better than one. Chapters on methods, design, and warping are included. \$35 USD plus shipping.

www.lulu.com Enter the book title.

Spinning Wheel Sleuth

Hand Looms, Supplement #21, \$10. Gallinger Loom Design; Sears Hearthsides Looms; Nellie Sargent Johnson: Creator of Sears Hearthsides Looms; Inga Askling and Her Two-Legged Loom; Loom in a Wallace Nutting Photograph.

Hand Looms, Supplements #1 to #10, on flash drive. \$15.

Make checks payable to and mail to: The Spinning Wheel Sleuth, P. O. Box 422, Andover, MA 01810. Or via PayPal at www.spwhsl.com

The Draughts of Jeremiah Fielding 1775 edited by Pat Foster, Janet Dunbar and Lynne Harper.

This spiral bound book contains over 50 weaving drafts assembled in 1775 by a Lancashire weaver. The original drafts, modern versions, and photographs of modern woven samples are shown.

See <https://www.patfosterweaverdyer.com/>

Your *Journal*: Share Your Weaving Knowledge and Experiences

Inside every CW member is a story and wealth of knowledge! Sharing our experience and knowledge is the heart of CW—unlike other publications, we do not solicit articles from individuals outside our organization. In an effort to “share information and encourage interests”, Complex Weavers welcomes articles from individual weavers as well as study group members. Material for the *Journal* is given priority according to the date received. Late or lengthy submissions are subject to available space. Classified and commercial advertisements should be sent to the Advertising Manager. Address changes may be made by logging on to the website and updating your member profile or by contacting the Membership Chair. If you do not receive your *Journal* when you think you should, please sign in to the Membership directory to confirm that your membership and contact information are current.

2020-2021 Publication Schedule:

February 2021: Deadline November 30, 2020

June 2021: Deadline March 31, 2021

October 2021: Deadline July 31, 2021

Journal Editor: Ruth MacGregor at CWJournalEditorRM@gmail.com

Newsletter Editor: Ingrid Knox at ingridknox99@gmail.com

Editing Team: Mimi Smith, Janet Stollnitz, Prue Hill, and Elaine Plaisance

Advertising: Angela Schneider at ComplexWeaversAds@gmail.com

Membership/Mailing List: Amy Norris at

CWMembership@amyfibre.com

Printing and Distribution: Lynn Smetko at CWPresident-LFS@gmail.com

CW *Journal* Article Guidelines are posted on the CW website or can be obtained from the Editor. Please consult them before starting or submitting your article. The Guidelines will answer a lot of your questions and save you time. Your *Journal* staff, all volunteers, are ready and eager to help you with a contribution.