

COMPLEX WEAVERS

Encouraging curiosity, exploration, innovation in weaving

March 2019 | Number 123



Newsletter

In this issue

President's Letter
Board Happenings
2019 CW Election
Financial Report
Complexity 2020
CW Awards
Librarian's Corner
Seminars 2020
40th Anniversary Book
CW Southeast Gathering
Weave a Real Peace
Balance & Budget Sheets
Classifieds & Events

President's Letter

Dear Complex Weavers members,

Things are happening in the Complex Weavers' world! More details are included in this *Newsletter*, but there are a few items I would like to highlight.

2019 Election of Officers and Annual General Meeting

With March comes our annual election of officers. The Nominating Committee has compiled a terrific slate of volunteers; the nominees' bios and statements appear on pages 3-4. After the online election in April, the new officers will be installed, and assume office, at the time of the 2019 Annual General Meeting, which will be held at MidWest Weavers Conference 2019 on June 20, 2019, in Grinnell, Iowa.

Seminars 2020 and Complexity 2020

In keeping with the request to realign *Seminars* with HGA's Convergence®, the planning committee is working hard to make that happen again for you. *Seminars 2020* will be held July 19-22, 2020, in Knoxville, Tennessee at the Holiday Inn World's Fair Park, immediately preceding HGA's Convergence at the same location. Stay longer and enjoy both *Seminars 2020* and Convergence, all in one location. Contact: cwseminars2020@gmail.com

Complexity 2020 will be on display July 19-27, 2020, at the Holiday Inn and is being scheduled so that it can be viewed by attendees of both *Seminars 2020* and Convergence. It's time to start planning what you will enter! The Prospectus is on our website and online submission is open December 1, 2019 to March 15, 2020. Contact: cwcomplexity2020@gmail.com

We need your help and support to be successful. Please consider contacting an Event Chairman or Committee Chair to offer your assistance, or say "Yes!" if asked. Volunteering for any task, large or small, is most appreciated. Complex Weavers is an all-volunteer organization: we would be nothing if not for our volunteers! Also, our website now has the capability to accept online donations to a CW fund of your choice. Please help support CW however you can.

Older CWJ issues coming online!

For some time, we have been planning to pull together the main content from *CW Journal* issues 2005-2009 (printed using an older technology) into one or two more volumes of *Compilations*. But instead we have been able to convert those journals in their entirety into PDFs which we can put on our website for all members to access free of charge. More recent issues (2010 onwards) are already there, as well as an index to all issues pre-2011. So keep an eye on our website and by the beginning of April you should find them all. Just click on the *Journal* link top right once you've logged in.

Weaving is most often a solitary endeavor. Putting on events for our members require teamwork. Fortunately, we have the team!

Keep weaving!

Mimi Anderson

cwpresidentmda1820@gmail.com

Board Happenings

January Board Meeting

January 14, 2019 to February 11, 2019

The January Board of Directors meeting was held electronically with the meeting agenda and position papers posted on the CW *groups.io* website. President, Mimi Anderson, called the meeting to order on January 14, 2019. The meeting adjourned February 11, 2019. Below are the key discussions and actions of the meeting.

Treasurer's Reports

The Board accepted the report for 4th Quarter, 2018, and the Annual accountings report.

40th Anniversary Book

Very good progress is being made to ready the book for the printer. Because of the delayed publication date, the pre-order period has been extended to the end of March 2019. At the time of the meeting, 544 books had been pre-ordered.

Seminars 2020

Cathie Chung and Diane Smith have been making arrangements. A contract has been signed, and deposit made, with the Holiday Inn, Knoxville, for July 19 through July 22. Our Keynote speaker will be Philis Alvic, and a retrospective exhibit honoring Ingrid Boesel is being planned.

Complexity 2020

Bettes Silver-Schack, *Complexity 2020*, reports that the prospectus is available on the CW website and has assistants for publicity and advertising. The venue for *Complexity* is not yet firm.

Annual Reports were heard for:

Library

Jean Hosford reported that borrowing is up from last year, new acquisitions, and shelving repairs.

The Manuscript Recovery Fund

Marjie Thompson reported that the manuscripts from the late ATHM (American Textile History Museum) were moved to Wintherthur, where they may be seen. She is communicating with the assistant librarian regarding conservations of notebooks containing many early drafts.

Website

Cally Booker presented a detailed report of the visitation to our website with charts and graphs. She is planning minor changes to the site, and detailed the on-going updates for the *Seminars* area of the site.

New Business

Promotional materials have been uploaded on to the website for use by the Area Liaisons.

Bookmarks will be re-printed for distribution at regional weaving conferences.



Stacey Harvey-Brown (detail)

Mimi reported the Nominating Committee, led by Peg MacMorris, has submitted a slate of candidates for the upcoming election.

(Mimi Anderson, for)

Carla Gladstone, Secretary with a broken finger.

2019 CW Election

You will soon receive an email notification that will allow you to vote in the Complex Weavers election via a secure internet site. The electronic voting process is simple, free, and secure, and we encourage all members to take advantage of the streamlined process to vote. Many thanks go to Amy Norris for managing the balloting. You will receive voting instructions via email shortly.

The Nominating Committee

The Board would like to express its appreciation to the Nominating Committee for recruiting these well-qualified candidates. The Committee, chaired by Peg MacMorris, also includes Brenda Gibson and Catharine Wilson.

Alice van Duijnen

2nd Vice President



A textile addict since early youth, and active weaver since 2002, I have been a member of Complex Weavers since 2006, ever since my weaving teacher in the Netherlands, Marijke Dekkers, told me that "that group really is something for you". And she was right! Nowadays I weave on a 32-shaft Louet Megado computer dobby, still discovering the endless possibilities it gives. Exploring new structures, variations. Playing with colors and materials. It just never fails to captivate me.

After improving my skills in the Fine Threads Study Group, I am currently a

member of the Double Weave Study Group. If possible, I do visit the one day workshops organized in London, which allow me to stay in contact with other European "curious" weavers. To be a weaver in the modern times of internet makes it possible to stay in contact and exchange knowledge and ideas.

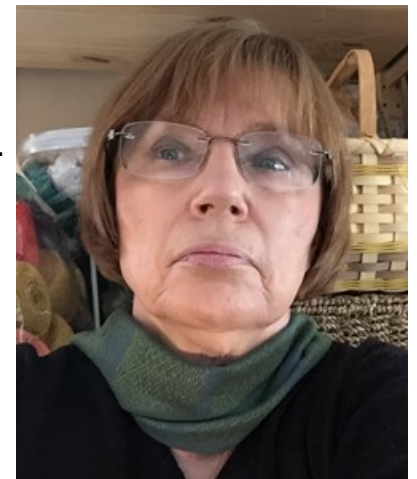
In my daytime job I work in automation as business architect and linking pin between business and IT. I trust that my organizational and IT skills will keep on providing added value to this organization.

It has been an honor to serve this organization as board member, and I want to extend my role as coordinator for Area Liaisons to further support them in their local endeavors. I cherish the international contacts with active members all over the globe.

Linda Kaufman

Treasurer

I have been weaving for 35 years. I was enchanted with handweaving the first time I saw it done and I have been weaving ever since. My loves are structure and fine threads. I weave household items, scarves, shawls, and yardage for clothing. Towels are a favorite of mine (for experimentation). I love learning about weaving and am a faithful attendee of guild workshops, conferences, and study groups. My fiber journey also includes dyeing and spinning.



Until now, all my weaving has been done on a 10-shaft Glimakra Standard Countermarche, an 8-shaft table loom, and an 8-shaft Baby Wolf. I am anxiously awaiting delivery of an AVL K-Series Compudobby loom. I am eager to begin exploring the possibilities of more than 10 shafts.

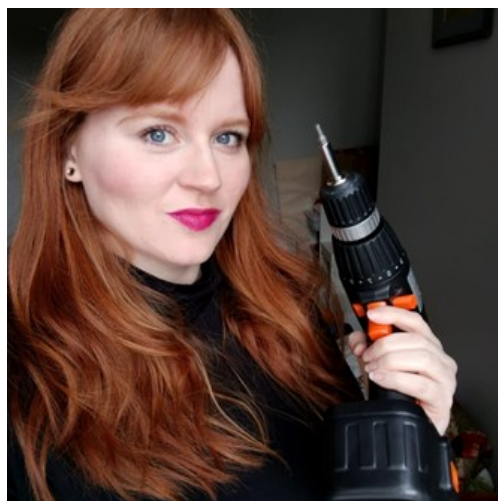
In my many years of weaving, I have lived in a half dozen different places and my membership in the local guilds has provided me with a warm welcome and friendship that has eased these

transitions. The generosity and shared knowledge among weavers is as much a reward as a finished project. Over the years I have held various offices in my local guilds including President, Treasurer, and Program Chair. I served for four years on the Board of Directors of the Intermountain Weavers Conference where I was the Registrar.

In my career as an IT professional, I worked to design and implement a variety of business systems for major corporations.

Kathleen Groves

Secretary



I am British-Canadian and live in London UK with my two small children and husband. I am a weaver, dyer, spinner, lace knitter, and plant person. I hand dye all of my warps and wefts, primarily with fibre reactive and acid dyes on both cellulose and protein fibres, although in the past I grew my own dyestuffs in my garden and worked with those. I weave mostly yardage in silks and fine cottons, and am interested in ornate twills, Bateman, and other tied weaves, as well as exploring ever finer yarns and wild

silks and a variety of dyeing methods. I mostly spin silks and British breed wools on my Lendrum spinning wheel. I weave in my home studio on a 12-shaft Louët Spring, 8-shaft Louët David, 8-shaft Louët Jane, and recently added a 32-shaft Louët Megado Compu-dobby. In my corporate life, I worked in product management and business development but left after my second child to focus on kids, weaving, plants, and my yarn shop. I am a member of the London Guild of Weavers Spinners and Dyers and Complex Weavers, and attend the CW study days and events here in London.

Elaine Plaisance

Study Group Coordinator

I've known about Complex Weavers since I first began weaving in the 1980s. I've been a member of CW for about 15 years and was a member of the Collapse, Pleat and Bump Study Group from 2012 to 2018. Complex Weavers has been a very important part of my life, especially the study group. I remember when I first joined CW; I was told that the study groups are the heart of the organization and that I should join at least one group. So I did!



I've done all sorts of weaving: almost everything from Pendleton selvages to (somewhat) fine thread iridescence. I made a button blanket in the style of the Northwest Coastal tribes using Theo Mormon technique. I received a people's choice award at the ANWG conference in Bellingham in 2013.

For the last four or so years, I have also been a member of the team that reviews articles for the *CW Journal* to ensure comprehensibility and cohesion and best possible grammar for the articles. I have worked closely with Ruth MacGregor and Lynn Smetko. I would be honored to serve as the Study Group Coordinator.



Jennifer Moore (detail)

Financial Report

Here is the Year End Report. When all was done and dusted, we earned **\$39,554.91**. This is due to excellent budgeting on the part of the *Seminars* and *Complexity* chairs, to active membership, and some very generous donations from members.

Updates

Connie Grob has been hired as a limited engagement book keeper to put all of our past financial records into the same format for easy transition to the next Treasurer. She has recommended an accountant and I will solicit other recommendations. (If you know of someone you'd recommend, please let me know.)

The preliminary paperwork has been done to set up investment accounts. When our U.S. Bank Investment guide has all of the information from our Finance Committee, money from Savings will be transferred to two investment accounts, one of which is specifically ear-marked for the Exhibition (*Complexity*.) The Finance Committee is working on drafting their Mission Statement and Goals.

Some of you asked about trends. Here are some numbers from 2018:

	1st Quarter	2nd Quarter	3rd Quarter	4th Quarter
Savings	213,931.14	214,433.07	213,952.85	213,963.63
Checking	146,225.71	143,434.30	87,004.43	81,852.75
Journal Total	-6,512.59	-7,933.95	1,530.00	-6,600.69
Merchandise Total	189.09	266.80	1,104.45	368.23
Membership Total	12,491.53	11,985.00	8,580.00	13,334.51

Recommendation

We should begin budgeting two years out so that our budget always reflects *Seminars* and *Complexity* expenses as they are usually spread over two years. I think this will give us a more accurate picture.

Here's the breakdown of the Savings account:

Complexity Fund:	\$ 23,300.00
Manuscript Recovery Fund	\$ 3,500.00
Scholarship/Friendship Fund	\$ 465.12
Memorial Fund	\$ 0
Silent Auction Fund	\$ 26,058.49
Diane Fabeck Fund	\$ 1,500.00
Kathi Spangler Fund	\$ 850.00
<u>Unreserved Savings</u>	<u>\$ 158,590.02</u>
Savings Total	\$ 213,963.63

The Checking account currently sits at \$81,852.75.

Intended investment will be drawn from the Savings account, leaving enough funds in the checking and savings accounts to almost cover two *Seminars*, even without registration and membership income. We are in excellent financial shape.

Carla Tilghman
Treasurer

Complexity 2020

Now is the time to begin designing and weaving your submissions for *Complexity 2020*! Your work produced after July 2018 is eligible for the show. All the details are available in the prospectus (click [here](#)) on the CW website.



Barbara J. Walker (detail)

CW Awards

As winter slips behind us (we hope!), we look forward to new weaving challenges. It's also time to think about the upcoming Regional Conferences and juried shows. Complex Weavers has provided the Complex Weavers award to many juried shows. Would your show like to be considered for awarding a Complex Weavers Award? Now is a good time to request an award for 2019. I just received the ribbons that Marguerite Gingras has woven for 2019 and they are beautiful!



2018 Award ribbons woven by Sarah Fortin with center medallion by Lillian Whipple

Information about the award can be seen on the CW website at www.complex-weavers.org/contact/cw-award-information/. There is a link to view past award winning pieces. There is also a [link](#) to contact me, Ginger Kaldenbach, the CW Awards Coordinator.

Librarian's Corner

I recently had cause to review the borrowing activity for 2018 and, by golly, it was better than in 2017. There are some super star borrowers amongst you! The top borrower returned seven times and borrowed 30 items over the course of the year. Imagine the inspiration, education, and growth. Although New Years has passed, it's not too late to make a resolution to use the library this year; borrow early and borrow often.

Recent acquisitions in the library include a guide for the *Operation of the John Campbell Jacquard Loom* written by James M. Ham and

donated by his wife Mary Ham with the assistance of Jette Vandermeiden. John Campbell was a Scottish trained weaver who immigrated first to the United States and then to Canada (mid-1850s) where he wove carpet coverlets for almost 40 years in the Toronto area. His loom was subsequently donated to the Ontario Science Centre and the operation and use documented by James Ham.

Another acquisition involved the cooperation of two members. While visiting the rare books stacks at the Winterthur Library, Jeanne Frett photographed Abslam Hecht's *INSTRUCTIONS FOR WEAVING, in all of its VARIOUS BRANCHES* published 1849 in Baltimore (Price \$1). Gay McGeary printed and bound the pages before sending them to the library. This is very welcome, as the older library copy is a photocopy of a photocopy of a and is visually challenging to read. Suffice it to say that proper permission was obtained from Winterthur to photograph Hecht's book and to print a copy for our library.

Borrow one of these books, or any of those listed in our Library-Thing catalog. Use the form on the CW Library section of the website, or contact me directly: jeanhosford@gmail.com

Jean Hosford
Librarian

Consider a Donation to CW

Our website now has the capability to accept online donations.

There are four funds to choose from, described here:

<https://www.complex-weavers.org/donate-to-cw/funds/>.

The link to make a donation is:

<https://www.complex-weavers.org/donate-to-cw/>

Please consider a contribution to the fund of your choice to support the mission of CW and the many services provided to its members. Thank you!

SAVE THE DATE

Complex Weavers Seminars 2020

Knoxville, Tennessee
Holiday Inn World's Fair Park
July 19 through 22



Complex Weavers is heading for the Volunteer State!

Mark your calendars to join us in Knoxville, Tennessee — July 19 through 22, 2020. CW Seminars will take place prior to HGA's Convergence at the same location, with one day between events so we can take in the town and see special exhibits.

Start planning proposals for exciting seminar topics. We're accepting submissions until March 1, 2019. Complete details for Proposal Requirements are available on the Complex Weavers website:

www.complex-weavers.org/wp-content/uploads/2018/11/CW-seminars-2020-RFP.pdf

Registration details for Seminars 2020 will be announced later in 2019.

We look forward to seeing you in Knoxville!

Cathie Chung and Diane Smith
Co-Chairs, Seminars 2020

40th Anniversary Book

Eight Shafts: Beyond the Beginning

Personal Approaches to Design

Pre-order pricing continues!

A new book in honor of Wanda Shelp and CW's 40th anniversary will be published in 2019: *Eight Shafts Beyond the Beginning: Personal Approaches to Design*. The book focuses on the design process and will contain work from over 70 Complex Weavers. The first half encompasses 8-shaft work with emphasis on controlling straight and curved lines to form motifs, using color, and adding personal touches. The second half takes 8-shaft components to up to 40-shaft looms, drawlooms, Jacquards, ply-splitting, and twining. In this half, design techniques make use of interleaving, tied work, networking, block substitution, graphic (Photoshop) approaches, and layering. There will be tips from the weavers and editor for each piece. An extensive reference section will point to additional resources for many of the pieces.

Order before March 31st and the normal retail price of \$39.95 will be discounted 20% for members and 10% for non-members. Shipping is extra and will be collected before the book is shipped. Place your pre-order online at CW web-site's [Market](#).

Pleats Please Me by Wendy Morris
Scarf and Clutch Purse
2/1 and 1/2 twill variants with plain weave, 8 shafts
Woven in 18/2 and 60/2 spun silk



CW Southeast Gathering 2019

The second CW Southeast Gathering is scheduled for April 12-14, 2019 at the Yadkin Valley Fiber Center in Elkin, NC (yadkinvalleyfibercenter.org). Jette Vandermeiden, one of the three jurors for the CW *Complexity 2018* exhibition in Reno, is the guest speaker. For more information on Jette, go to her website <http://www.huroniahandweavers.org/teanaustaye.html#jettebio>

The cost for the gathering is \$175. This includes Friday and Saturday dinners, Saturday and Sunday lunches, and four lectures. See page 6 of the December 2018 *CW Newsletter* for more details on the event schedule. To register, go to: <https://yadkinvalleyfibercenter.org/complex-weavers-southeast-gathering-2019/>

Weave a Real Peace Annual Meeting

Weave A Real Peace (WARP), an international organization whose members value the importance of textiles to grassroots economies, is holding its 2019 annual meeting at the Georgetown University Hotel and Conference Center from June 20- 23. With a theme of *Women and Textiles: A Path to Peace*, it features a meeting with curators at the Textile Museum, speakers helping women artisans in the Middle East and Africa, book signings, and a documentary about international cultural artists. WARP welcomes textile artists, academics, and textile enthusiasts interested in international development to attend. For more information or to register, visit <https://weavearealpeace.org/2019-washington-dc/>

Complex Weavers
Balance Sheet Standard
4th Quarter 2018/Year End Quarter Report

ASSETS

Current Assets

Checking/Savings

Paypal	13,178.45
--------	-----------

Bank of America (BoA) checking	81,852.75
--------------------------------	-----------

BoA Savings	213,963.63
-------------	------------

Total Checking/Savings	295,816.38
------------------------	------------

Total Current Assets	308,994.83
----------------------	-------------------

TOTAL ASSETS

LIABILITIES AND EQUITY

Liabilities

Current Liabilities

Credit Cards

BoA Visa	0.00
----------	------

Total Current Liabilities	0.00
---------------------------	------

TOTAL LIABILITIES	0.00
--------------------------	-------------

EQUITY

Retained Earnings*	295,816.38
--------------------	------------

Net Income	28,701.30
------------	-----------

Total Equity	308,994.83
--------------	------------

TOTAL LIABILITIES AND EQUITY	308,994.83
-------------------------------------	-------------------

*Retained Earnings refers to the net earnings not paid out in dividends at the end of the last quarter. (This is why the Total Liability and Equity number and the Total Assets numbers match.

Complex Weavers Profit and Loss Budget vs Actual January through Sept 2018

	Jan-Dec 2018	Projected Income	Outcome
INCOME			
Exhibit (Complexity) -In			
Entry fee @ \$20 x 80	1,617.55		
Total Exhibit (Complexity) - In	1,617.55	1,000.00	+617.55 over
CW Journal - In			
Ads	1,532.00		
Back Issues	371.00		
Total CW Journal - In	1,903.00	4,000.00	-2,097.00 under
Newsletter Ads	120.00	0.00	+120.00 over
CW Merchandise - In			
Pin Sales	52.50		
Collingwood DVDs	180.00		
Greatest Hits - In	1,853.70		
Early Weaving Books CD 2 \$15	60.00		
CW Publications - Compilations	432.65		
Total CW Publications	2,578.85	4,000.00	-1,421.15 under
Postage—In	325.60		
Gifts Received/Donations	4,872.86		
Webs	96.23		
Interest Income - Savings	43.80	300.00	-256.20 under

Membership - In

US 1 year	14,735.00		
US 2year	18,620.00		
Canada 1 year	2,520.00		
Canada 2 year	2,320.00		
International 1 year	6,115.00		
International 2 year	4,050.00		
Total Membership - In	48,360.00	40,000.00	+8,360.00 over

MSS Recovery

0.00	200.00	-200.00 under
------	--------	---------------

CW Seminars (Registrations) -In

Via Regonline	63,407.49		
Via PayPal	23,996.25		
Via Check	1,008.00		
Total Registration Fees	88,491.74	85,050.00	+3,441.74 over

Silent Auction

3,775.00

Marketplace

1,176.50

TOTAL INCOME

153,361.13

+22,961.13 over

	Actual Expense	Projected Expense	Outcome
EXPENSE			
Fees			
PayPal Fees	2,072.03		
Square Fees	87.90		
Total Fees	2,159.93	1,600.00	-559.93 over
Exhibit (Complexity) - Out			
Gallery Fee	0.00		
Juror Fees	900.00		
Exhibit Chair	1,832.28		
Vendor Fee	771.37		
Total Exhibit	3,503.65	9,000.00	5,496.35 under
CW Seminars—Out			
Keynote Speaker	1,594.54	1,481.00	-113.54
Bus Transportation	1,494.32	2,000.00	+505.68
Regonline Fee	152.68	1,134.00	+981.32
Credit Card Fees	0.00	3,402.00	+3,402.00
General Liability Policy	190.14	400.00	+209.86
Site Visit	767.95	500.00	-267.95
Misc. expenses	376.63	200.00	-176.63
Peppermill Bill	63,292.52	64,359.00	+1,066.48
Food and Beverage		59,359.00	
AV		5,000.00	
Teacher Stipend and Housing	9,601.37	9,732.00	+130.63
Leader Housing		4,657.00	
Leader Stipend		5,075.00	
Poster Session	59.43	400.00	+340.57 over
Seminars Refunds	3,690.00	0.00	-3690.00
Total Seminars - Out	81,219.58	83,608.00	+2,388.42 under

CW Journal—Out

Envelopes & Labels	196.76		
Postage - Out	4,640.76		
Printing	17,300.45		
Ad Discounts	54.00		
Total CW Journal - Out	22,191.21	30,000.00	+7,808.79 under

CW Merchandise - Out

Postage - Out	311.99		
40th Anniversary Book			
Robin Reid Photography	200.00		
Total CW Merchandise - Out	511.99	2,000.00	+1,488.01 under

Election	630.80	600.00	-30.80 over
-----------------	--------	--------	-------------

Membership - Out	43.47	200.00	+156.53 under
-------------------------	-------	--------	---------------

Officers/Chairs

President	84.92		
Area Reps	0.00	100.00	
Officer Pins	247.50	200.00	
Total Officers	332.45	300.00	-32.45 over

**Awards (includes Seminars
and Complexity Awards)**

Fabeck	500.00		
Spangler	750.00		
Awards	900.00	250.00	
Scholarship	0.00	70.00	
Total Awards			-580.00 over

Publicity	0.00		
Handweaver's Guild Membership	100.00	500.00	+400.00 under
Professional Services	0.00	100.00	+100.00 under
Web Page			
Domain Name Registration	60.00		
Maintenance Upgrades			
Computer Courage	633.75		
Total Web Page	693.75	2,000.00	+1,306.25 under
Colorado Business License	10.00		
BoA CC	259.99		
TOTAL EXPENSE	113,806.22	128,428.00	+14,621.78 under

Complex Weavers is ending the year with a final **Net Income of \$39,554.91**. This is excellent and will cover the costs associated with printing the Journal and the Complexity exhibit.

	Actual Net	Projected Budget Net	Outcome
NET INCOME	39,554.91	6,172.00	+33,382.91

Classifieds

Ply-Splitting from Drawdowns: Interpreting Weave Structures in Ply-Split Braiding by Barbara J. Walker

Learn how to use any single layer drawdown for ply-splitting. Many illustrations and photos guide you through the process. Finishing techniques are included and gallery pages inspire. \$34 USD plus shipping. www.barbarajwalker.com

Supplementary Warp Patterning: Turned Drafts, Embellishments & Motifs by Barbara J. Walker

This comprehensive book by the authority on supplementary warp weaving will teach you that two (or more) warps are indeed better than one. Chapters on methods, design, and warping are included. \$35 USD plus shipping.

www.barbarajwalker.com

Spinning Wheel Sleuth

Hand Looms, Supplement #20, \$10. A Warp-Weighted Loom; The Carlisle Historical Society Loom; Looms for Ingrain-Carpet Weaving; History of Newcomb Loom Company; Newcomb Loom Models. \$10. Hand Looms, Supplements #1 to #10, on CD or flash drive. \$15.

Make checks payable to and mail to: The Spinning Wheel Sleuth, P. O. Box 422, Andover, MA 01810.

www.spwhsl.com

Textiles of Egypt in Style

Travel with Nancy Arthur Hoskins and Christine Pearson on our third textile theme tour of Egypt, Textiles of Egypt in Style, from October 29 to

November 13, 2019. Our small group will visit all of the sights of Egypt from Alexandria to Abu Simbel, and sail on the Nile in a classic ship from Luxor to Aswan. Contact: Christine and Robert Fletcher's travel company specializing in textile tours. Robert@intent.id.au or intent.id.au

Events

Southeast Fiber Forum

Enjoy a weekend of fiber in the Smoky Mountains of East Tennessee. Offering 14 workshops in a wide range of fiber arts. Arrowmont School of Arts & Crafts, Gatlinburg, TN. April 4-7, 2019. www.sefiberforum.org

One of a Kind, Ahead of Her Time: The Legacy of Helen Louise Allen

This exhibition of textiles from the travels of Professor Allen invites guests to consider the woman, the collector, and the educator who looked at textiles as carriers of human culture. Lynn Mecklenberg Textile Gallery, Madison, WI. Through April 18, 2019. <https://sohe.wisc.edu/research-development/centers-of-excellence/cdmc/textile-collection/>

Midwest Weavers Conference

Uncommon Threads, the 2019 Midwest Weavers Conference, June 20-22 in Grinnell, IA. Registration is now open. <http://www.midwestweavers.org/conference/>

25th Annual Weaving History Conference

Thousand Islands Arts Center, Clayton, NY. May 16-17, 2019. <https://tiartscenter.org/whc.php>

Your Journal: Share Your Weaving Knowledge and Experiences

Inside every CW member is a story and wealth of knowledge! Sharing our experience and knowledge is the heart of CW—unlike other publications, we do not solicit articles from individuals outside our organization. In an effort to “share information and encourage interests”, Complex Weavers welcomes articles from individual weavers as well as study group members. Material for the *Journal* is given priority according to the date received. Late or lengthy submissions are subject to available space. Classified and commercial advertisements should be sent to the Advertising Manager. Address changes may be made by logging on to the website and updating your member profile or by contacting the Membership Chair. If you do not receive your *Journal* when you think you should, please sign in to the Membership directory to confirm that your membership and contact information are current.

2019-2020 Publication Schedule:

June 2019: Deadline March 31, 2019

October 2019: Deadline July 31, 2019

February 2020: Deadline November 30, 2019

Journal Editor: Ruth MacGregor at CWJournalEditorRM@gmail.com

Newsletter Editor: Christine Jeryan at cjeryan@comcast.net

Editing Team: Mimi Smith, Janet Stollnitz, Prue Hill, and Elaine Plaisance

Advertising: Angela Schneider at akspins@comcast.net

Membership/Mailing List: Amy Norris at CWMembership@amyfibre.com

Printing and Distribution: Lynn Smetko at CWPresidentLFS@gmail.com

CW *Journal* Article Guidelines are posted on the CW website or can be obtained from the Editor. Please consult them before starting or submitting your article. The Guidelines will answer a lot of your questions and save you time. Your *Journal* staff, all volunteers, are ready and eager to help you with a contribution.