

Membership Application Form

Please print clearly.

Complete both sides of this panel, detach, and mail to:

CW Membership Chair, 8742 Teasdale Avenue
Saint Louis, MO 63124-1926, USA

First Name

Last Name

Street Address

City

State/Province

Zip Code

Country

Phone

Email, line 1

Email, line 2

Website, line 1

Website, line 2



Or, simply follow this link to the membership area using the Quick Response code reader on your smart phone.

Complex Weavers

- promotes weaving that goes beyond plain weave through education related to complex weave structures
- inspires through research, documentation and innovative concepts
- encourages members to discover and develop their own creative ideas
- supports the continuous exchange and sharing of information
- fosters enthusiasm, excellence and expertise

There is no requirement for a particular number of shafts or type of loom, nor is the community limited to professional weavers.

For the Weaver Who Wonders “What If?”

Are you a weaver who:

- wants to explore ideas?
- enjoys challenging yourself?
- is always curious to know more?
- loves to share what you’ve discovered?

Complex Weavers is open to weavers worldwide who want to increase their knowledge and expand their horizons.



Simply use this QR (Quick Response) code reader on your smart phone to scan the code and launch the Complex Weavers website.

www.complex-weavers.org



Membership Information Enclosed

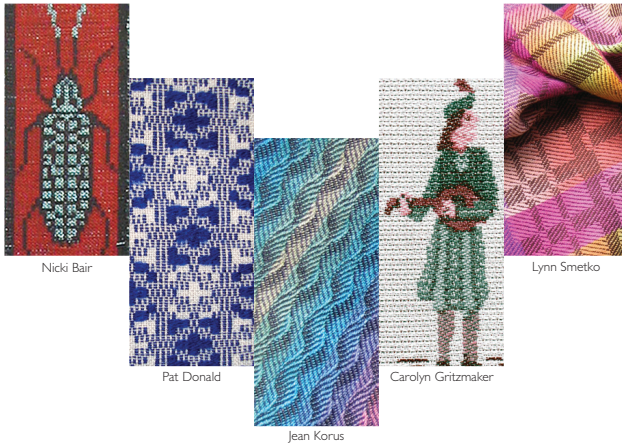


Heleen Boesdijk & Jean Korus

“Complex weaving is about the ongoing pursuit of considering infinite possibilities when crossing two threads.

It transcends the number of shafts on a loom or the spectrum of hues on a color wheel since it is only the imagination that limits a weaver.”

— Robyn Spady



Member Services

As a member of Complex Weavers, you will have the opportunity to:

- receive the full color *Complex Weavers Journal*, published three times a year
- access the extensive lending library of books, periodicals and study group notebooks
- interact in a wide variety of study groups
- attend the biennial conference, Complex Weavers Seminars
- become part of an international community of like-minded weavers

Complex Weavers Publications

The following publications were produced by Complex Weavers and are available for purchase exclusively from the CW website. To learn more, visit www.complex-weavers.org.

CW's Greatest Hits

a book of members' favorite drafts

CW Newsletter Compilations III, IV

containing articles from the *Journal*

Peter Collingwood - Weaver

an extensive interview and technical demonstrations (2 DVD set)

Early Weaving Books on CD

a 4 CD set

Complexity: A Biennial Exhibit

An international exhibit to provide members with the opportunity to be juried and gain recognition in the art world.

Study Groups

An ongoing and vital part of Complex Weavers, study groups produce samples, newsletters or other materials for exchange among members. The groups are self-organized and financed, formed as demand arises. Currently active groups:

- Archaeological Textiles
- Bateman Weaves
- Beyond Plain Weave Garments
- Collapse, Pleat & Bump
- Designing Fabrics
- Double Harness
- Double Weave
- Early American Coverlets & Counterpanes
- Early Weaving Books & Manuscripts
- Fine Threads
- Jacquard Study Group
- Kumihimo
- Ondulé Textiles
- Oscar Beriau Sampling Group
- Preserving Our Past
- Sample Exchange the Old-Fashioned Way
- Sixteens
- Structure Survey
- Tied Weaves & Beyond
- Twenty-Four, More or Less

Visit www.complex-weavers.org to view work submitted as part of past exchanges. You must be a current member of Complex Weavers to belong to a study group.

Special Interests

Members have indicated interests in the following topics for further exploration:

- Acadian Weave Traditions
- Bead Weaving
- Combining Textile Techniques
- Damask & Opphampta
- Functional Textiles
- Hargrove
- Iridescence
- Lampas & Velvet
- Liturgical Weaving
- Natural Fibers
- Passementerie
- Rugs
- Saganishiki Weaving
- Scandinavian Textiles
- Shaft Switching
- Tablet & Inkle Band Weaving
- Tapestry
- Three-Shaft Weaving

Membership Application Form

For quick and secure service, please visit the Complex Weavers website to register your membership information at www.complex-weavers.org/membership/

For members without Internet access, please fill out both sides of this panel, detach, and mail with payment to:

CW Membership Chair, 8742 Teasdale Avenue
Saint Louis, MO 63124-1926, USA

Dues Per Year:

- ☐ \$35 USA
☐ \$40 Canada & Mexico
☐ \$45 Elsewhere

Type of Membership: Term of Membership:

- ☐ New membership ☐ 1 year
☐ Renew membership ☐ 2 years (preferred)

Payment Method:

- ☐ Check/Money Order

Please make checks/money orders payable in US
Funds drawn on a US Bank to: COMPLEX WEAVERS.

- ☐ Credit Card

- ☐ Visa ☐ MasterCard ☐ Discover Card ☐ Novus

For PayPal or to join online, please visit
www.complex-weavers.org/membership/

First Name on Card Middle Initial

Last Name on Card

Card Number

Expiration Date (Month, Year) 3-digit security code

Signature

Date

please detach this panel and return to Complex Weavers