

# COMPLEX WEAVERS

*Encouraging curiosity, exploration, innovation in weaving*

December 2018 | Number 122



# Newsletter

## In this issue

President's Letter  
Board Happenings  
Call for Nominations  
*Complexity 2020*  
Area Liaisons  
Study Groups  
CW Southeast Gathering  
CW Awards  
*Seminars 2020*  
Treasurer's Report  
40th Anniversary Book  
Classifieds & Events

## President's Letter

When I was a little girl, I loved to sew. First, I loved that my mom sewed, and made doll clothes for me, sometimes a dress for me with a matching doll dress! When I got a bit older, I took classes at school, which led to a college major (BA in Home Economics) called Textiles, Clothing and Art. One class had the assignment to sew something from an "unusual" textile. I did not even know about handwoven cloth and chose vinyl for a rain coat. But there were looms up on the 4th floor of Raitt Hall. Looms. Weaving. Hmmmmmmmm....

Unfortunately, I was not able to get into a weaving class, but I did begin to look around for textiles to sew that were more complicated. I learned about structures and fiber contents and characteristics of fibers. I found a double weave checkerboard wool, and was fascinated — however did they do that?

I married and eventually became a mother. I distinctly remember being in the hospital room studying the blanket on my bed, a cotton "thermal" textile. Now I know it was a lace weave! How do you make this?

I took my first weaving class about a year later, and ever since, the fascination has continued.

For the past month, my husband and I have been downsizing and moving from a very large home to a tiny duplex. We have a retirement home (and my studio) on San Juan Island, but the time is not quite yet. I've made the 2<sup>nd</sup> bedroom here into office/weaving room with my small loom, and soon things will be put away and I can get to the warp on it.

I can hardly wait!

Happy weaving and holiday cheer to all,

*Mimi Anderson*  
cwpresident1820@gmail.com

# Board Happenings

## October Board Meeting

October 15, 2018 to November 22, 2018

The meeting was held electronically with the meeting agenda and position papers posted on the CW *groups.io* website. Below are the key discussions and actions of the meeting.

President, Mimi Anderson, called the meeting to order on October 15, 2018.

### Treasurer's Reports

The Board accepted the proposed budget for 2019. There will be unusual, but budgeted, expenses stemming from publication of the 40<sup>th</sup> Anniversary book.

### Investment Committee

The Board has accepted a proposal to invest funds not required for day-to-day expenses.

### 40<sup>th</sup> Anniversary Book

The book is now scheduled to go press in May 2019. Because of the delayed publication date, the pre-order period has been extended to the end of March 2019. At the time of the meeting, 544 books had been pre-ordered.

### Seminars 2020

Cathie Chung and Diane Smith have been hard at work seeking opportunities and making arrangements. *Convergence* will be at the Holiday Inn in Knoxville, Tennessee from July 24 through July 30, 2020. Cathie and Diane are pursuing a contract with the Holiday Inn for Seminars 2020 for July 19 through July 22. There will be a one-day gap between *Convergence* and *Seminars* because the Holiday Inn meeting rooms are booked for a non-textile event on July 23.



Gay McGeary

### Complexity 2020

Bettes Silver-Schack will be the organizer for *Complexity 2020*. Bettes is working with Cathie and Diane to identify a suitable venue or venues for *Complexity*.

Carla Gladstone  
Secretary

## CW Nominating Committee Seeking Two Key Positions

The CW Nominating Committee still needs your nominations for two key positions that start in July 2019—Study Group Coordinator and Treasurer. Each of these individuals will serve on the Board, meaning that they participate in quarterly online Board meetings. This is a chance to see the real working of this all-volunteer organization and have a voice in its operation. A real benefit is getting to know the other Board members through these online interactions. They are a dynamic and lively group of leaders, making the experience FUN.

For the Study Group Coordinator, it would be helpful for the nominee to have participated in at least one CW Study Group, but not absolutely necessary to have been the coordinator for the group. This person will organize and facilitate the SG contributions to the *Journal* and to the CW Library, as well as helping new groups to get established and assisting those struggling to look for solutions.

The Treasurer handles all the finances of the organization and needs to reside in the U.S. in order to access the U.S. bank. The person in this position would benefit from experience with some form of accounting software to keep track of income and expenses and to prepare reports and budgets for the organization. Again, this is an important position on the Board and involves “attending” online Board meetings to have a voice in CW operations.

So, if you are computer-savvy enough to handle online meetings, consider volunteering. If you know of a great candidate who hasn't yet been discovered, send us the name and we will make contact with them. Remember, this is a way to get involved with oth-

er GREAT volunteers who also love to weave.

The CW Nominating Committee – Brenda Gibson (UK), Catharine Wilson (CAN), Peg MacMorris (US, chair). Send responses to [CWnominating2019pm@gmail.com](mailto:CWnominating2019pm@gmail.com)

Peg MacMorris  
Chair, Nominating Committee

## Complexity 2020

I am excited to be working on the *Complexity 2020* show in Knoxville and am grateful for those people who have come forward to help with all the details. I also would like to express my profound gratitude to the 2018 committee for all of their hard work and their extraordinarily complete files which are going to make this 2020 committee's experience much easier. If you have skills to share and would like to be involved in this exhibition, please be in touch. No one will be turned away!

Some changes are in store for **Complexity 2020: Innovations in Weaving**. In 2020, Seminars will occur *before Convergence*. **Complexity** will hang in the same venue where *Seminars* and *Convergence* will convene and will remain hanging for the duration of both conferences from July 21-30, 2020. We are also still examining the possibility of moving the show to another location after the close of *Convergence*.

Now is the time to begin designing and weaving! Your work produced after July 2018 will be eligible for the show. We will post more submission details to the web site as the time progresses.

A significant change from 2018 will be that only one piece per artist may be submitted as an entry. This change is NOT to provide an opportunity for more members to be in the show but rather to provide variety and diversity to the show.

Work will be accepted in any of four categories. The entry fee of \$20 USD/entry is unchanged from previous exhibits. The entry weight must not exceed 20 pounds (11.4 kg).

**Apparel and accessories** (examples include: jacket, vest, scarf, purse, necklace)

**Home furnishings including functional textiles** (examples include: pillow, towel, rug, placemats)

**Yardage** (raw edges much be folded under twice and hand hemmed)

Width: 18 inches (45.7 cm) to 45 inches (1.1 m)

Length: 3 yards (2.7 m) to 5 yards (4.6 m)

### 2- and 3-dimensional work

2-D Maximum: 48 inches x 48 inches (122 cm x 122 cm)

3-D Maximum: 12 inches x 24 inches x 12 inches (30 cm x 60 cm x 30 cm)

**Submittable** will again be our online call-for-entries provider. The system allows highly customizable entry forms and their support team has been terrific. **Complexity's** call for entries will open December 1, 2019 and close March 15, 2020.

Bettes Silver-Schack  
Chair, *Complexity 2020*



Robin Haller



# Complexity 2020 Jurors

It is with great enthusiasm that we announce our Jurors for the *Complexity 2020* exhibition.

**Louise French** has had a lifelong interest in fibers and fabric which finds expression in weaving, sewing, clothing design, and ply split braiding. A weaver for more than 40 years, she has earned the Certificate of Excellence in Handweaving from the Handweavers Guild of America. Louise has been an examiner for the COE as well. She has taught both weaving and ply-split braiding throughout the United States and is committed to sharing the arts of weaving and braiding. Mentoring both new students and guiding other teachers has been a passion. She has had articles on both weaving and ply split braiding published in *Handwoven* magazine, and freely shares her teaching materials. Textiles of her designs and meticulous execution are award winning and in steady demand. She is continually intrigued by the interplay of color and structure and the many ways these components can push the boundaries of fiber art.

**Lillian Whipple** has been weaving since 1971. She is an HGA Master Weaver. Her special interest is fine silk at high setts in complex structures for use in clothing, small art pieces, and note cards. Her work has been exhibited in national exhibitions and fashion shows for many years. Lillian continues to chair the Fine Threads Structure group for Complex Weavers.

**Louise Lemieux Bérubé** received a bachelor degree at the Université du Québec à Montréal, and she studied Jacquard weaving at Rhode Island School of Design. Her woven Jacquards have received numerous honors and have been exhibited and sold in Canada and in many countries. Her work has been represented in major public collections. Louise cofounded the Montreal Centre for Contemporary Textiles, where she has taught students from everywhere and, as a lecturer or exhibitor of her work, she has travelled around the world. She is the author of *Le Tissage créateur*, a comprehensive textbook on weaving, and the co-author, with Carole Greene, of *Louise Lemieux Berube, Unwinding the Threads* published in 2012.

Bettes Silver-Schack  
Chair, *Complexity 2020*

# Area Liaisons for CW

As you might know, we had some vacancies for the position of Area Liaison (AL). However things have improved a lot since the last *Newsletter*. We no longer have any vacancies in the US!

I am happy to welcome several new ALs:

Donna Hudson for U.S. Kentucky and Indiana,  
Ashly Crawford for U.S. Missouri,  
Pam Rathmell for U.S. Florida.  
Bianca Geiselhardt for Germany and Switzerland and German language support.

Thanks to all above for responding to my request and taking up this role.

If you want to contact them or any other AL please use the contact forms on our website.

Should you consider taking up this role for your area (Scandinavian countries, Canada Northern Prairies) , or if you have any other questions please let me know via the [Contact Form](#) if you are interested.

Alice van Duijnen,  
2<sup>nd</sup> Vice President

## Consider a Donation to CW

Our website now has the capability to accept online donations.

There are four funds to choose from, described here:  
<https://www.complex-weavers.org/donate-to-cw/funds/>.

The link to make a donation is:  
<https://www.complex-weavers.org/donate-to-cw/>

Please consider a contribution to the fund of your choice to support the mission of CW and the many services provided to its members. Thank you!

# New Study Groups

NEW Study Groups have formed!

## Ondulé Textiles

If you were intrigued by the book review in the October *CW Journal* of Norma Smayda's *Ondulé Textiles: Weaving Contours with a Fan Reed*, please look into participating in our newest Study Group! The book will be the initial source material for study; as the study progresses more written material will undoubtedly be found.

Because of the slow weaving process and because samples are too small to show the dramatic undulating effects, this study group will consist of discussion and photos, but no woven samples. There will be no cost for joining the group. There is an obligation, however, to weave / experiment enough to submit a detailed discussion at least once yearly.

For more information and to join this Study Group:

<https://www.complex-weavers.org/study-group/ondule-textiles-weaving-with-a-fan-reed/>

## Archaeological Textiles

The dormant Medieval Textiles Study Group has been reborn as Archaeological Textiles. Sarah Goslee and Laura Thode, both familiar to participants of the Medieval Textiles group, are co-chairing this group. Topics for study cover everything from textile impressions in prehistoric ceramics to relics in cathedral treasuries. The time period covered spans global prehistory to approximately 1700.

This group has a primarily online presence, and members will submit contributions for a newsletter. Each member must contribute one article each year, staggered throughout the year depending on membership size. This allows time for discussion and to share related resources. These contributions may be of any length, and cover museum finds, research projects, book reviews, etc. Themed sample exchanges may occur occasionally.

For more information and to join this Study Group:

<https://www.complex-weavers.org/study-group/archaeological-textiles/>

## Preserving Our Past: Index and Scrapbook of 20th Century Handweavers

This new Study Group, chaired by Marjie Thompson, is spearheading a new approach to compiling the recent history of hand weaving.

"As we chase the newest technology and weaving trends, we lose track of those who taught us and those who taught them, wrote the books on our shelves, and designed the looms that preceded the ones we use. This is a study group designed to gather the names and as much of a biography as possible of our notable weaving predecessors, worldwide. The starting point for name collection is the 1876 Centennial Exposition in the United States and the 'Colonial Revival' movement begun at that time, modeled after the European Arts and Crafts movement (William Morris)." The initial focus of the group is name and information collection and its storage. Information about weavers is welcome from all.

For more information and to join this Study Group:

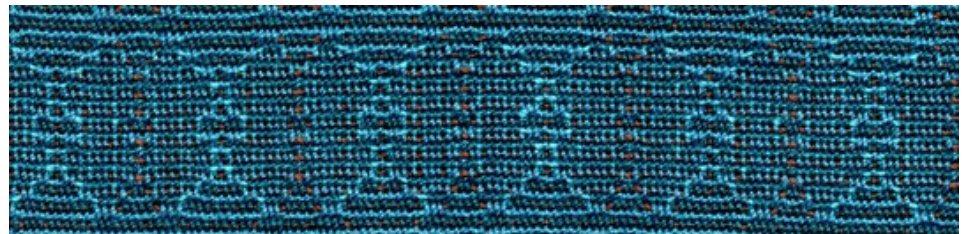
<https://www.complex-weavers.org/study-group/preserving-our-past-index-and-scrapbook-of-20th-century-handweavers/>

Welcome also to new chairmen in existing Study Groups; Bateman, Beyond Plain Weave Garments, Designing Fabrics, Double Harness, Structures; and huge thanks to those stepping down for their leadership and efforts to keep the Study Groups humming.

Take a look at the Study Groups; the heart of CW. There's something for everyone!

<https://www.complex-weavers.org/member-resources/study-groups/>

Jayne Flanagan  
Study Group Coordinator



Barbara Levin (detail)

# CW “Southeast Gathering 2019”

Plans for the second CW Southeast Gathering (April 12-14, 2019) are moving forward. Jette Vandermeiden, one of the three jurors for the CW *Complexity 2018* exhibition in Reno will be our guest speaker. From her web site (<http://www.huroniahandweavers.org/teanaustaye.html#jettebio>):

“Jette weaves all types of cloth on looms with four and more shafts, but her love is producing Damask and Scandinavian weaves on her drawlooms. She teaches extensively, presenting seminars and workshops at colleges, conferences and guilds, locally and internationally.”

**Cost: \$175.** This includes Friday and Saturday dinners, Saturday and Sunday lunches, and four lectures. We needed to increase the cost from the Gathering 2017 to cover our speaker’s travel expenses coming from Canada.

If the **maximum (25)** has not been reached by the **end of January**, the gathering will be open to non-CW members at the cost of **\$225**.

## Registration and Cancellation Policy:

To register, go to:

<https://yadkinvalleyfibercenter.org/complex-weavers-southeast-gathering-2019/>

We have designated around Friday, March 15, 2019 as the “go/no go” for the event. If the **minimum** number of participants to cover our expenses has not been met, the event will be cancelled and a full refund will be made. If a participant cancels, there is no refund, unless the event is cancelled.

## Schedule:

Friday evening	Intro Dinner and lecture <i>What Goes Up? A Study of Drawloom Theory</i>
Saturday morning	Lecture <i>Blended Draft</i>
Saturday afternoon	Hands-on and Show and Tell
Saturday evening	Dinner and lecture <i>The Noble Napkin</i>
Sunday morning	<i>Critique Session</i> (Jette will gear this session to the audience’s interest—general to specific questions, items brought by participants may be critiqued, etc.)

Sunday noon

Lunch with Closing

**Location:** The Yadkin Valley Fiber Center [yadkinvalleyfibercenter.org](http://yadkinvalleyfibercenter.org) (this is a new location for the Fiber Center) Elkin, NC 28621

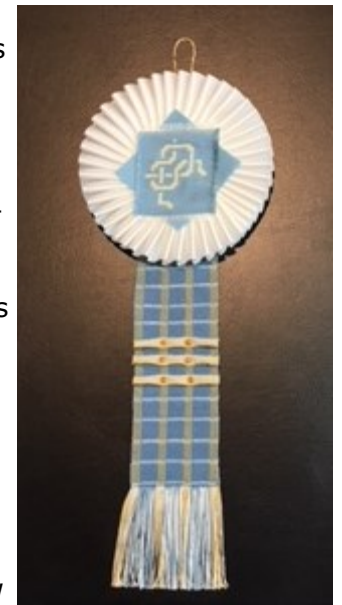
**Hotels:** Elk Inn (Elkin Inn \$66-\$83 as of 9/2018), Hampton Inn, Days Inn, Quality Inn, Fairfield Inn, all within 5 miles.

Leslie Killeen

## Plan Awards for Your 2019 Conferences

As 2018 slips behind us, we look forward to a winter of new weaving challenges. It’s also time to think about the upcoming Regional Conferences and juried shows. Complex Weavers has provided the Complex Weavers award to many juried shows. Would your show like to be considered for awarding a Complex Weavers Award? Now is a good time to request an award for 2019. I just received the ribbons that Marguerite Gingras has woven for 2019 and they are beautiful!

Information about the award can be seen on the CW website at [www.complex-weavers.org/contact/cw-award-information/](http://www.complex-weavers.org/contact/cw-award-information/). There is a link to view past award winning pieces. There is also a [link](#) to contact me, Ginger Kaldenbach, the CW Awards Coordinator.



2018 Award ribbons woven by Sarah Fortin with center medallion by Lillian Whipple



## SAVE THE DATE

**Complex Weavers Seminars 2020**  
**Knoxville, TN • Holiday Inn World's Fair Park**  
**July 19-22, 2020**

**Complex Weavers is headed for the Volunteer State!**

Mark your calendars to join us in Knoxville, Tennessee  
July 19-22, 2020

Seminars will take place prior to HGA's Convergence at the same location with one-day between events to take in the town and see special exhibits.

Start thinking about proposals for exciting seminar topics. We are accepting your submissions until March 1, 2019. Complete details for Proposal Requirements can be found on the Complex Weavers website at:

<http://www.complex-weavers.org/wp-content/uploads/2018/11/CW-seminars-2020-RFP.pdf>

Registration details for Seminars 2020 will be announced later in 2019.

We look forward to seeing you in Knoxville!

Cathie Chung and Diane Smith  
Co-Chairs, Seminars 2020



# Treasurer's Report

This report includes summaries from the Treasurer and the 2019 Proposed Budget.

At the end of October, 2018 our funds stand as:

Paypal balance -----	\$4632.64
Bank of America Checking -----	\$87,081.43
Bank of American Savings	
Complexity Fund -----	\$22,888.00
Silent Auction Fund -----	\$26,058.49
Manuscript Recovery Fund -----	\$3,500.00
Friendship Fund -----	\$465.12
Memorial Fund -----	0
Kathi Spangler Fund -----	\$850.00
Diane Faebeck Fund -----	\$1,500.00
Savings Balance-----	\$158,694.87

**Total CW Monies ----- \$305,670.55**

As a reminder, at the Reno face to face meeting, an Investment committee was formed of myself, Mimi Anderson, and Lynn Smetko to investigate possible ways to invest CW funds. Future CW Treasurers will also be part of this committee. A proposal was made to the online Board meeting for investment strategies.

The Board agreed to invest certain monies in conservative, long term investment accounts as follows:

- The Silent Auction Fund is currently earmarked to support the *Complexity* exhibition as is the *Complexity* Fund. Both of those funds will be rolled together and invested in an investment account through U.S. Bank. Interest from the *Complexity* Investment will be applied to *Complexity* exhibition expenses.
- \$80,000.00 will be invested in a separate fund, also through U.S. Bank with interest income as yet unspecified. It could potentially be used for any of several purposes—defray rising printing costs, set up a student scholarship or research scholarship, subsidize a student membership rate, charitable contributions to support weavers worldwide—to be determined at future board meetings and by future membership needs.

Anyone who thinks about possibly donating to CW (thank you in advance), you might consider the Spangler or Faebeck funds. They were originally set up to disappear once the funds were depleted, however, they are really lovely funds that benefit our membership. Keeping them going would be a great idea. When you donate, please be sure to indicate a specific fund, or a general donation that will go into Savings.

The 2019 Proposed Budget appears on pages 9-11. Subsequent budgets will be drafted on a two-year cycle so that we can really see the arch of preparing for future seminars and exhibitions.

Carla Tilghman  
Treasurer

## Jacquard Exhibition Note



The Jacquard Research Group of the Maison des métiers d'art de Québec (MMAQ) presented two woven pieces in the Vitrine Gallery (367 Charest Avenue, Québec City). The pieces capture the collaborative quality of the research group. *Cadavre Exquis* is woven by six members, and *Uncut* shows samples from each of the members research woven into a single continuous piece. A video of members weaving *Uncut* was also on display. The exhibit ran from November 15 to December 17, 2018.

*Cadavre Exquis*



Complex Weavers	Proposed Budget for 2019 v.3		
<b>Income</b>	<b>2018 Income to date</b>	<b>2018 Budget</b>	<b>2019 Proposed Budget</b>
<b>CW Publications</b>		\$4000.00	\$4000.00
Ads	\$1,502.00		
Back Issues sold	\$301.00		
<b>CW Merchandise</b>		\$2000.00	\$22,000.00
<b>40th Anniversary Book</b>		\$20,000.00	
Collingwood DVDs	\$165.00		
Greatest Hits	\$1,189.00		
Early Weaving, CD @ \$15	\$45.00		
Compilations	\$387.65		
Postage - In	\$292.10		
Pins	\$30.00		
<b>Bank</b>		\$200.00	\$200.00
Interest Income	\$32.10		
<b>Membership - In</b>		\$40,000.00	\$40,000.00
US 1 yr	\$10,990.00		
US 2 yr	\$11,480.00		
Canada 1 yr	\$2,160.00		
Canada 2 yr	\$2,080.00		
International 1 yr	\$4,810.00		
International 2 yr	\$3,060.00		

<b>Donations</b>	\$4,072.86		
Complexity Fund		\$1000.00	\$1000.00
Scholarship Fund		\$250.00	\$250.00
MSS Recovery Fund		\$200.00	\$200.00
<b>Total Income</b>	<b>\$42,596.71</b>	<b>\$67,650.00</b>	<b>\$67,650.00</b>
<b>Expenses</b>	<b>2018 Expenses to Date, Sept 30</b>	<b>2018 Budget</b>	<b>2019 Proposed Budget</b>
<b>CW Publications - Out</b>		\$30,000.00	\$30,000.00
Printing	\$12,550.45		
Shipping/Postage	\$2,630.09		
Ad Discounts	\$54.00		
<b>CW Merchandise - Out</b>			
<b>40<sup>th</sup> Anniversary book</b>		\$31,794.00	\$32,000.00
Postage	\$255.81	\$500.00	\$500.00
<b>Fees</b>		\$1,600	\$1,700

Bank CC	\$147.00		
Paypal	\$1,630.91		
Square	\$75.33		
<b>Membership expenses</b>	\$43.47	\$200.00	\$200.00
<b>Computer/Web</b>	\$616.20	\$2,000.00	\$2,000.00
Hosting package			
Adhoc sup 2hr @ \$135			
Develop- ment10hr@\$135			
Domain Registration			
Maintenance upgrades			
<b>Awards</b>		\$250.00	\$250.00
<b>Publicity</b>		\$500.00	\$500.00
<b>Taxes, legal</b>		\$100.00	\$100.00
<b>Election</b>	\$630.60	\$650.00	\$650.00
<b>Officers</b>	\$332.45	\$300.00	\$300.00
President			
Membership Chair			
Merchandise Chair			
Seminar Chairs			
Exhibition Chair			
<b>Library</b>		\$100.00	\$100.00
<b>HGA Membership</b>	\$100.00	\$100.00	\$100.00
<b>Contractors</b>			
Bookkeeper			\$500.00
CPA			\$700.00
<b>Investment Expenses</b>			
Managements Fees			
<b>Colorado Business Li- cense</b>	\$10.00	\$10.00	\$10.00
<b>Total Expense</b>	<b>\$34,713.66</b>	<b>\$36,110.00</b>	<b>\$69,610.00</b>



# 40th Anniversary Book

The new book in honor of Wanda Shelp and CW's 40th anniversary will be published next year. *Eight Shafts Beyond the Beginning: Personal Approaches to Design* details the ways in which 72 weavers approach design. The first half of the book encompasses 8-shaft work with emphasis on controlling straight and curved lines to form motifs, using color, and adding personal touches. The second half takes 8-shaft components to 10 to 40 shafts, drawooms, Jacquards, ply-splitting, and twining through the use of interleaving, tied work, networking, block substitution, graphic (Photoshop) approaches, layering, and other design techniques.

Pre-Publication Price Continues!

- Good news! The deadline for pre-order pricing has been extended to March 31, 2019
- Order before March 31<sup>st</sup> and the normal retail price of \$39.95 will be discounted 20% for members and 10% for non-members. Shipping is extra.
- Place your pre-order online at CW website's [Marketplace](#).



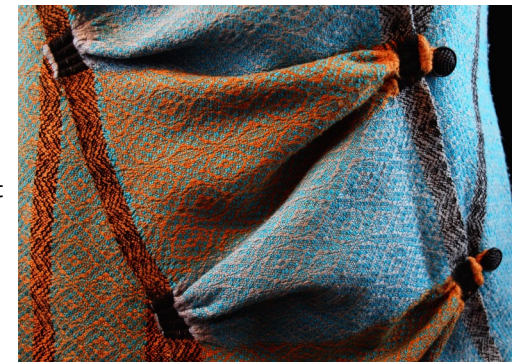
Detail of *Pieces of Eight and Two-Bits* scarf by Sandra Hutton



"Night Reflections" vest by Leslie Killeen



"Northwoods" towels by Janet Hayman



Detail of 3-D Triangle vest in silk and linen by Sally Eyring

## Classifieds

### **Ply-Splitting from Drawdowns: Interpreting Weave Structures in Ply-Split Braiding by Barbara J. Walker**

Learn how to use any single layer drawdown for ply-splitting. Many illustrations and photos guide you through the process. Finishing techniques are included and gallery pages inspire. \$34 USD plus shipping. [www.barbarajwalker.com](http://www.barbarajwalker.com)

### **Supplementary Warp Patterning: Turned Drafts, Embellishments & Motifs by Barbara J. Walker**

This comprehensive book by the authority on supplementary warp weaving will teach you that two (or more) warps are indeed better than one. Chapters on methods, design, and warping are included. \$35 USD plus shipping. [www.barbarajwalker.com](http://www.barbarajwalker.com)

### **Hand Looms, Supplement #20, \$10.**

A Warp-Weighted Loom; The Carlisle Historical Society Loom; Looms for Ingrain-Carpet Weaving; History of Newcomb Loom Company; Newcomb Loom Models. \$10. *Hand Looms, Supplements #1 to #10*, on CD or flash drive. \$15.

Make checks payable to and mail to The Spinning Wheel Sleuth, P. O. Box 422, Andover, MA 01810. [www.spwhsl.com](http://www.spwhsl.com)

## Events

### **Super/Natural: Textiles of the Andes**

This exhibition features over 60 textiles along with a small selection of ceramics from the museum's collection that together explore the ways select Andean cultures developed distinct textile technologies and approaches to design. February 23-June 23, 2019. Art Institute of Chicago. <https://www.artic.edu/exhibitions/9122/supernatural-textiles-of-the-andes>

### **Narrative Threads: New Jersey Quilts and Textiles**

This exhibition of historic textiles from the collection of the Museum of Early Trades & Crafts also features work by contemporary New Jersey artists who draw inspiration from the past. Through June 9, 2019. <http://www.metc.org/current-exhibits/>

### **Florida Tropical Weavers Guild Conference**

March 14-17, 2019 in Leesburg, FL on beautiful Lake Yale. <http://ftwg.org/event/2019-ftwg-conference/>

### **Intermountain Weavers Conference**

July 25-28, 2019 in Durango, CO at Fort Lewis College. <https://www.intermountainweavers.org/>

## Your Journal:

# Share Your Weaving Knowledge and Experiences

Inside every CW member is a story and wealth of knowledge! Sharing our experience and knowledge is the heart of CW—unlike other publications, we do not solicit articles from individuals outside our organization. In an effort to “share information and encourage interests”, Complex Weavers welcomes articles from individual weavers as well as study group members. Material for the *Journal* is given priority according to the date received. Late or lengthy submissions are subject to available space. Classified and commercial advertisements should be sent to the Advertising Manager. Address changes may be made by logging on to the website and updating your member profile or by contacting the Membership Chair. If you do not receive your *Journal* when you think you should, please sign in to the Membership directory to confirm that your membership and contact information are current.

### **2019-2020 Publication Schedule:**

June 2019: Deadline March 15, 2019

October 2019: Deadline July 15, 2019

February 2020: Deadline November 15, 2019

Journal Editor: Ruth MacGregor at [CWJournalEditorRM@gmail.com](mailto:CWJournalEditorRM@gmail.com)

Newsletter Editor: Christine Jeryan at [cjeryan@comcast.net](mailto:cjeryan@comcast.net)

Editing Team: Mimi Smith, Janet Stollnitz, Prue Hill, and Elaine Plaisance

Advertising: Angela Schneider at [akspins@comcast.net](mailto:akspins@comcast.net)

Membership/Mailing List: Amy Norris at [CWMembership@amyfibre.com](mailto:CWMembership@amyfibre.com)

Printing and Distribution: Lynn Smetko at [CWPresidentLFS@gmail.com](mailto:CWPresidentLFS@gmail.com)

CW *Journal* Article Guidelines are posted on the CW website or can be obtained from the Editor. Please consult them before starting or submitting your article. The Guidelines will answer a lot of your questions and save you time. Your *Journal* staff, all volunteers, are ready and eager to help you with a contribution.