

COMPLEX WEAVERS

Encouraging curiosity, exploration, innovation in weaving

September 2018 | Number 121



Newsletter

In this issue

President's Letter

Board Happenings

Call for Nominations

Complexity 2018

Seminars 2018

Treasurer's Report

40th Anniversary Book

CW Meeting at Convergence

CW Annual Meeting

Librarian's Corner

CWJ Back Issues Sale

Area Liaisons

Kathi Spangler Scholarship

Awards

CW Awards

Classifieds & Events

President's Letter

As our global climate changes, many of us are experiencing extra heat, haze from smoke, more rain than usual, and other less desirable weather patterns. So, when summer blends into autumn, we welcome cooler days and nights, moving inside for time at the loom and less time in the garden. As I get back to my loom, I feel I've been stimulated with months of weaving ideas, inspired by attending the conferences in Reno.

Complex Weavers, also, is moving forward with stimuli. Being together at *Seminars* always leads to good ideas and plans for our organization. Here are a few highlights.

Strategic Plan. A Strategic Plan to guide CW has been adopted by the board. A summary and a link to the plan on our website can be found in the *Board Happenings* article.

Election. In 2019, the positions of Treasurer, Secretary, 2nd Vice President, and Study Groups Coordinator are to be elected. Nominating Committee members—Peg MacMorris, chair, with Brenda Gibson and Catharine Wilson—will be searching for candidates for these positions over the next months. If you are interested in serving Complex Weavers in one of these positions, please contact any of the committee members.

Seminars 2020. Co-chairs Diane Smith and Cathie Chung are busy already with planning our next Seminars. We will continue to be aligned with HGA's Convergence, which will be held in Knoxville, Tennessee, July 24-30, 2020. We will work with HGA's Executive Director to realign avoiding any overlaps. Diane and Cathie have heard from many volunteers already, and you may contact them by [email](#) to be added to the list!

Complexity 2020. We are delighted to announce that Bettie Silver-Schack will serve as the Complexity Chair. The exhibit has a grand, growing history, and documentation of processes and pitfalls are well recorded so that the transition to 2020 will be smooth and successful. If you are

interested in helping with this event, please let Bettes know by [email](#).

40th Anniversary Book Publication. Our book *Eight Shafts: Beyond the Beginning Personal Approaches to Design* will be published soon. See the article on page 5 for pre-ordering information.

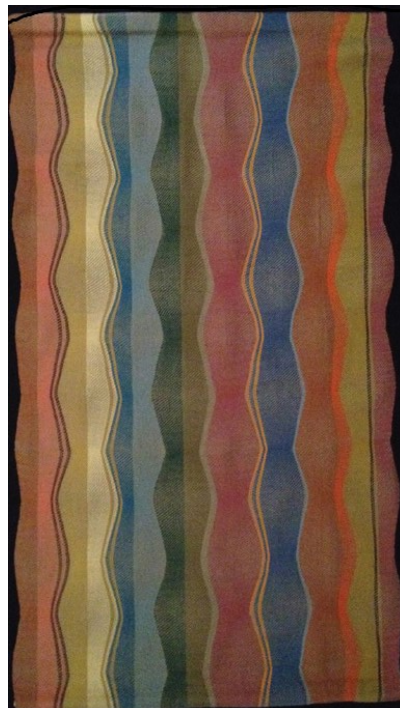
Thank You. Special Thanks go to **Seminars 2018** co-chairs, Marguerite Kaufman and Kathy Alexander. Our events in Reno were a pleasure with excellent leaders and topics, great meals shared with weaving friends, and fun events—fashion show, silent auction, and marketplace. Keynote Speaker Joe Coca gave an interesting presentation, and there was an outing to the Municipal Gallery for our exhibit, *Complexity 2018: Innovations in Weaving* and reception.

Thank You also to Susan Bowman and her committee members for all the work they did to present **Complexity 2018**, our juried exhibit. Twenty-eight pieces were accepted and beautifully displayed at the Municipal Gallery. The June 2018 *CW Journal* featured this work.

And, Thank You to all the many volunteers who make Complex Weavers continue. We have just celebrated 40 years—quite a milestone. We are an all-volunteer organization, and still growing. If you love CW like I do, please participate by volunteering, and saying yes when asked. I am happy to serve Complex Weavers as President of the Board for the next two years. The Board members are here for you. The list of directors and committee chairs is found on the inside cover of our Journal. You can also reach us via the "Contact" link at the top of each page of our website.

Weave away!

Mimi Anderson
cwpresident1820@gmail.com



Norma Smayda

Board Happenings

July Board Meeting
July 13, 2018 and July 23 to August 8, 2018

The July 2018 Quarterly Meeting of the Complex Weavers Board of Directors took place in two phases. The first phase was held on July 13, 2018, face-to-face, in the Peppermill Hotel where the Complex Weavers Seminars were held. The second phase was held electronically using groups.io between July 23, 2018 and August 8, 2018. This summary accounts for both phases.

Treasurer's Reports

The Board voted to accept the 2nd Quarter Treasurer's Report. The Report included details on the specially-tracked funds, such as Complexity and memorial funds. Complex Weavers is overall in better shape than this time last year.

Investment Committee

The Board approved the conservative investment of certain funds that are not required for short-term operations. The treasurer, Carla Tilghman, will research appropriate investment vehicles. A committee of the President, Immediate Past President, and Treasurer will make the final decisions on each action.

Strategic Plan

The Board voted to approve the updated Strategic Plan. The [complete plan](#) is available on the CW website.

40th Anniversary Book

Progress continues, though not as quickly as we would have liked. The goal is to have the book ready by the end of the year. Please see the article on page 5 for more details.

Complexity 2020

A search is underway to name the Complexity 2020 committee.

CW Seminars 2020

Diane Smith and Cathie Chung will be the organizers for the 2020 Seminars.

Carla Gladstone
Secretary

Call for Nominations

The following positions are due for election in 2019:

Second Vice-President
Secretary
Treasurer
Study Group Coordinator

If you are interested in one of these positions, or if you know someone you would like to see in office, please let the Nomination Committee know by 30 November 2018.

Ballots will be distributed electronically in March and voting will take place in April, 2019.

2019 Nominating Committee members:

Peg MacMorris, Chair (US)
Brenda Gibson (UK)
Catharine Wilson (CAN)

For more information on what these roles entail or to nominate someone, contact the Nominating Committee Chair using the Contact [link](#) on the CW website.

Complex Weavers would not exist without volunteers! Please consider running if you are asked, or volunteering if you have an interest. Thank you!

COMPLEXITY 2018: *Innovations in Weaving*

Once again, an outstanding selection of handwoven art was presented in *Complexity 2018: Innovations in Weaving*. This is the fourth biennial juried exhibit, sponsored by Complex Weavers, in conjunction with our conference, *Seminars*, and many positive comments were received. The exhibit had a 6-week run during the summer at Metro Gallery in downtown Reno, Nevada. July is Artown in Reno and a large number of textile enthusiasts and the public were able to see the current state of complex handweaving at the city-owned gallery inside the lobby of City Hall. For the reception, buses had been arranged to take members from the hotel to the gallery and everyone enjoyed seeing the work.

The gallery guide and award winners can be found on the Complex Weavers website: <https://www.complex-weavers.org/complexity-2018/>

Susan Bowman
Chair, *Complexity 2018*





The *Complexity 2018* reception hosted many guests, shown here enjoying the art.



CW Seminars 2018

July has come and gone, Seminars are over. We hope those who attended came away with inspiration, knowledge, and goals for their weaving. For those who were not able to attend the *CW Journal* reports will have to do and inspire you for

2020 in Knoxville. Cathie Chung and Diane Smith are the co-chairs for 2020 and we hope you will answer their calls for volunteers and for teachers.

Seminars in Reno was a chance to reunite with HGA's Convergence and the consensus was very positive. Many had a chance to shop and take classes at Convergence and then attend Seminars.

It was the 40th anniversary of Complex Weavers and we celebrated with cake, ice cream, and Robyn Spady giving us direction on communication that should help us for the next 40 years.

Last but not least was the opportunity to meet up with old friends, meet new friends, and put faces to those that we talk to over the internet, but seldom meet face to face.

A special thank you goes to every teacher and every volunteer who made *Seminars 2018* a success. Kathy and I could not have done it without each and every one of you.

Marguerite Kaufman and
Kathy Alexander
Co-chairs, *Seminars 2018*

Treasurer's Report

Complex Weaver's Seminar went very well. Thanks so much to Kathy Alexander and Marguerite Kaufman for everything along with so many others.

It looks like we came in within \$500-600 of our proposed budget, which is pretty brilliant.

Currently account balances are:

\$ 79,130.93 in Checking
\$213,945.70 in Savings

The Finance committee is looking at future investments, specifically for the Complexity Fund and the Silent Auction Fund as well as some investments to help defray future printing costs. Investing will also give us more options for scholarships to attract new members and support the research of current members.

Cheers,

Carla Tilghman
Treasurer

40th Anniversary Book

Eight Shafts: Beyond the Beginning

Personal Approaches to Design

Available for pre-order!

Pre-orders for the book have begun and can be placed on the CW Website <https://www.complex-weavers.org/market/>. Pre-order pricing is \$32 for CW members (a 20% discount) and \$36 for non-members (a 10% discount); shipping and handling is over and above these prices. See site for further details.

The book emphasizes the design process and will contain work from over 70 CW members. There will be design and/or technique tips from the weavers and editors for each piece. An extensive reference section will point the weaver to additional resources for many of the pieces.



Detail of *Pieces of Eight and Two-Bits* scarf by Sandra Hutton woven on 32 shafts. There is an 8-shaft doubleweave base in 60/40 silk/wool and three 8-shaft supplemental warp groups of fine silver rayon polyester cord for the coins and quarters.

CW Open Meeting at Convergence

The meeting, in a 50-seat room, was standing room only. About a quarter of the attendees were not already CW members. Lynn Smetko gave a brief presentation on what CW has to offer its members. Laurie Autio showed samples from the 40th Anniversary book and her informative poster. Study group members spoke about their projects. Lynn handed out door prizes in the form of copies of *Selvedge* magazine and extra copies of *CW Journal*. There was lots of energy and excitement in the room and a couple of people wanted to join CW then and there.

CW Annual Meeting

The Complex Weavers Annual Meeting was held on 12 July 2018, during *Seminars* attended by over 200 CW members. Of the five Past Presidents attending, Ladella Williams was named Honorary Director of the meeting. Each Board Member and Committee Chair gave a brief presentation of her responsibilities. Lynn Smetko became another Past President when the new President, Mimi Anderson, was invested into office.

Consider a Donation to CW

Our website now has the capability to accept online donations.

There are four funds to choose from, described here:

<https://www.complex-weavers.org/donate-to-cw/funds/>.

The link to make a donation is:

<https://www.complex-weavers.org/donate-to-cw/>

Please consider a contribution to the fund of your choice to support the mission of CW and the many services provided to its members. Thank you!

Librarian's Corner

I'm sure it was the heat, but library borrowing was down over the summer. Lately, there has been an upswing and I assume it's because the conference season is pretty much over. It's a great time to think about your fall weaving plans, and in what direction you're going to push yourself. Do not fear to treadle where others have treadled before—borrow study group material and get inspired.

Several months ago, the Library received a wonderful donation from Maryse Levenson. She had an extra copy of Norma Smayda's recently published volume, *Ondulé Textiles—Weaving Contours with a Fan Reed*, which she generously shared with us. This is an interesting book, which I don't intend to review other than to say Norma has masterfully combined an overview of contemporary ondulé textiles with profiles of five weavers working with fan reeds as well as a chronicling of her own design experiences using several differently configured fan reeds. There are plenty of design insights for all weavers, regardless of whether they have access to one of these unique reeds or not. Be the first to borrow this book!

In filling a borrower's wish list this weekend, I came across another item in the "missing" department. LibraryThing includes Donna Muller's *Handwoven Lace* amongst the CW Library collection, yet I am unable to find it on the shelves. It's not on the borrowing spreadsheet, and moreover, I don't remember ever seeing it here. Therefore, if you have borrowed this book, and you haven't returned it, please do so, or at the very least email me to say you have it. Also, as I've mentioned before, *Ars Textrina Volume II* is still on the lam.

The fact that the library doesn't assess fines for book held overly long is no reason not to return them. If you wish to renew something, please email me and say so—don't let the thrums pile up and hide your borrowed volumes. Submitted by your willing librarian, who can be contacted to borrow, renew, or return books using the following: jeanhosford@gmail.com

Jean Hosford
Librarian

CWJ Back Issues Sale

Back Issues of the *CW Journal* that are two years or older are available for sale at a "Buy Two Get Three" price for both members and non-members though the CW Website Marketplace. Currently that includes June 2016, Issue 111, and older.



Flax and Linen

also inside:

- Complexity 2016
- Patterns from New Kingdom Egypt
- Bériau Study Group
- and more

Area Liaisons for CW

In the June 2018 *CW Newsletter*, I wrote that we have vacancies for the position of Area Liaison. I am happy to welcome Belinda Rosee as new Area Liaison for the eastern part of Australia (QLD, NSW, VIC, ACT), as well as Katherine Buenger as new Area Liaison for U.S. Northern Great Plains (KS, ND, NE, MN, SD). Thanks to both of you for taking on this role. If you want to contact them or any other Area Liaison please use the contact forms on our website.

Should you consider taking up this role for your area, or if you have any other questions please let me know via the [Contact Form](#) if you are interested.

Alice van Duijnen,
2nd Vice President

Kathi Spangler Scholarship Awards

The winners for Kathi Spangler Scholarship Awards, listed below, were designed to highlight Kathi's love of CW and *Seminars* and her sense of fun. Thank you to those who contributed to the fund. I'm sure Kathi was smiling when they were awarded. Congratulations to the winners, and good luck in 2020 to first-time registrants!

40th Anniversary Celebration: 40th Person to Register for *Seminars* (\$175): Nancy Kilkenny

First-Time *Seminars* Attendee Drawing (\$375): Andrew McCracken

People's Choice Award for "Fun in Weaving at *Seminars*" (\$175): Carol James for her Sprang capri leggings exhibited at the Fashion Show

The fourth award, a writing contest with a scholarship award of \$375, had no entries.

Remaining funds in the Kathi Spangler Scholarship Award Fund will be used for First-Time *Seminars* Attendee scholarships as long there are funds available. We had one generous donation to the fund in Reno. Should anyone else care to contribute, the donation page on the CW

website is <https://www.complex-weavers.org/donate-to-cw/>. Designate "Memorial Fund for Special Projects" and "in memory" and enter Kathi Spangler's name in the box for honoree. It's a good cause—helping newcomers afford attending *Seminars*. Thank you!

Lynn Smetko
Past President

Your Donation

Donation to Complex Weavers *
Please enter the amount (in US dollars) which you wish to give

Is this gift in honor or in memory of someone? *

☐ in honor

☒ in memory

☐ no, this is not applicable

Please enter the name of the honoree *

If you would like to contribute to one of our designated discretion of the CW Board to the area where it is most

Designation

Sample donation page

CW Awards



2018 Award ribbons woven by Sarah Fortin with center medallion by Lillian Whipple

Is your conference sponsoring a juried fiber show? If so, would your show like to be considered for awarding a Complex Weavers Award? Information about the award can be seen on the CW website at <https://www.complex-weavers.org/contact/cw-award-information/>. There is a link to view past award winning pieces and also a link to contact Ginger Kaldenbach, the CW Awards Coordinator.



21st Century Plaid shawl by Yvonne Kattel, 2017 Complex Weavers Award at Handweavers and Spinners Guild of NSW, Australia: 70th Anniversary Exhibition

Classifieds

Ply-Splitting from Drawdowns: Interpreting Weave Structures in Ply-Split Braiding by Barbara J. Walker

Learn how to use any single layer drawdown for ply-splitting. Many illustrations and photos guide you through the process. Finishing techniques are included and gallery pages inspire. \$34 USD plus shipping.
www.barbarajwalker.com

Supplementary Warp Patterning: Turned Drafts, Embellishments & Motifs by Barbara J. Walker

This comprehensive book by the authority on supplementary warp weaving will teach you that two (or more) warps are indeed better than one. Chapters on methods, design, and warping are included. \$35 USD plus shipping.
www.barbarajwalker.com

Hand Looms, Supplement #20, \$10.

A Warp-Weighted Loom; The Carlisle Historical Society Loom; Looms for Ingrain-Carpet Weaving; History of Newcomb Loom Company; Newcomb Loom Models. \$10. *Hand Looms, Supplements #1 to #10*, on CD or flash drive. \$15.

Make checks payable to and mail to The Spinning Wheel Sleuth, P. O. Box 422, Andover, MA 01810.
www.spwhsl.com

Events

Kuba: Fabric of an Empire

An exhibition of textiles from this central African kingdom that display modernist abstract design. Baltimore Museum of Art, through January 20, 2019. <https://artbma.org/exhibitions/kuba-fabric>

A Nomad's Art: Kilims of Anatolia

Woven by women to adorn tents and camel caravans, this exhibit features treasures from the museum's collection of Anatolian kilims dating to the eighteenth and nineteenth centuries. The Textile Museum, through December 23, 2018. <https://museum.gwu.edu/kilims>

Susie Taylor: Poetic Geometry

Susie Taylor uses the grid, inherent to the weaving process, as both a jumping off point and problem solving tool. Textile Center, through October 27, 2018. <https://textilecentermn.org/poetic-geometry/>

Comfortable Cousins

An exhibition of American quilts and coverlets with similar romantic revival designs from 1830-1870. National Museum of the American Coverlet (Bedford, PA), through March 25, 2019. <http://www.coverletmuseum.org/exhibitions.htm>

Your Journal:

Share Your Weaving Knowledge and Experiences

Inside every CW member is a story and wealth of knowledge! Sharing our experience and knowledge is the heart of CW—unlike other publications, we do not solicit articles from individuals outside our organization. In an effort to “share information and encourage interests”, Complex Weavers welcomes articles from individual weavers as well as study group members. Material for the *Journal* is given priority according to the date received. Late or lengthy submissions are subject to available space. Classified and commercial advertisements should be sent to the Advertising Manager. Address changes may be made by logging on to the website and updating your member profile or by contacting the Membership Chair. If you do not receive your *Journal* when you think you should, please sign in to the Membership directory to confirm that your membership and contact information are current.

2018-19 Publication Schedule:

February 2019: Deadline November 15, 2018

June 2019: Deadline March 15, 2019

October 2019: Deadline July 15, 2019

Journal Editor: Ruth MacGregor at CWJournalEditorRM@gmail.com

Newsletter Editor: Christine Jeryan at cjeryan@comcast.net

Editing Team: Mimi Smith, Janet Stollnitz, Prue Hill, and Elaine Plaisance

Advertising: Angela Schneider at akspins@comcast.net

Membership/Mailing List: Amy Norris at CWMembership@amyfibre.com

Printing and Distribution: Lynn Smetko at CWPresidentLFS@gmail.com

CW *Journal* Article Guidelines are posted on the CW website or can be obtained from the Editor. Please consult them before starting or submitting your article. The Guidelines will answer a lot of your questions and save you time. Your *Journal* staff, all volunteers, are ready and eager to help you with a contribution.