

COMPLEXITY 2018: *Innovations in Weaving*

Gallery Guide

Complexity 2018: Innovations in Weaving, the fourth biennial Complex Weavers exhibit, is showing this year at Metro Gallery in Reno, Nevada. Every two years members of Complex Weavers are invited to submit new work for jurying, and the final selections are formally exhibited to the public. This is that exhibition.

This show presents recent textile creations that bear within them some form of complexity. All were made by hand, and all exhibit technical excellence.

This Gallery Guide takes you through the exposition, artwork by artwork, weaver by weaver. The pieces listed here are alphabetized by artist's name.

MIMI ANDERSON

Tacoma, Washington, USA

RUBY, RUBY

75 x 13 inches (190.5 x 33 cm)

Silk

*Four-color double weave on 16 shafts.
Double weave borders, tubular
double weave selvages on
remaining 8 shafts.*

Yarn: 30/2 silk

24-shaft loom



Photos by Mark Frey Photography

CALLY BOOKER

Dundee, Scotland, UK

LOST ICE

37 x 11.5 inches (94 x 29 cm)

Cotton, silk, metallics

*Parallel threading on 16 shafts.
Freeform techniques to produce
contrasting textures in the weave.
Yarns from sustainable sources.*

Mechanical dobby loom



Photos by Stuart Booker

SUSAN BOWMAN

Colorado Springs, Colorado, USA

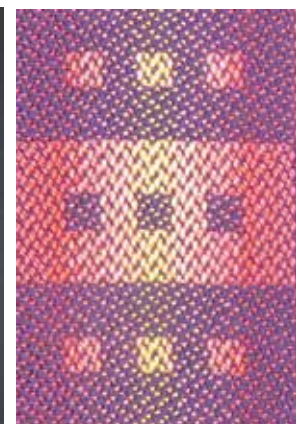
DESERT SKY

68 x 10 inches (172.5 x 25.5 cm)

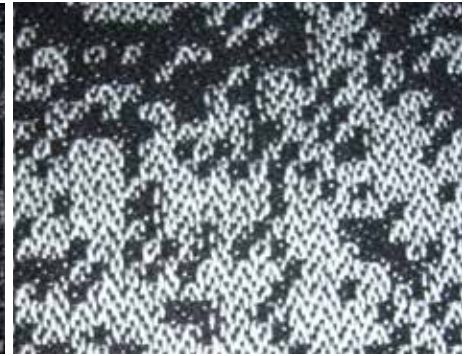
Silk, glass beads

*Twill on 16 shafts.
Some yarns are hand-dyed.
Yarn: 20/2 silk*

Computerized dobby loom



Photos by Susan Bowman

RAINY DAY**32 x 28 inches (82 x 71 cm)****Cotton***Patterned damask.**Warp: 16/2 cotton, white**Weft: 16/2 cotton, black**Drawloom with 300 single units*

Photos by Su Butler

CHILD'S WORLD**80 x 27 inches (203 x 69 cm)****Silk, cotton, beads***Fancy twill on 32 shafts, with four tablet-woven bands woven as part of the main fabric.**Fabric warp: 20/2 silk, hand dyed**Tablet warp: 10/2 cotton**Weft: 10/2 cotton*

Photos by Inge Dam

BLACK FEATHERS**73 x 8 inches (185 x 20 cm)****Tencel, cotton, viscose, silk***Network drafting, turned beiderwand variation.**Yarns: 20/2 Tencel, 30/3 cotton, viscose, 30/2 silk*

Photos by Karen Dorrde

DAWN TO DUSK**40 x 28 inches (102 x 71 cm)****Silk***Lampas.**Background warp: 40/2 silk**Tie-down warp: 60/2 black silk**Background weft: black reeled silk**Pattern weft: plied 17/1 silk noil with 13.5/1 tussah silk; various colors*

Photos by Suzy Furness

SUZY FURNESS

Ilkley, Queensland, Australia

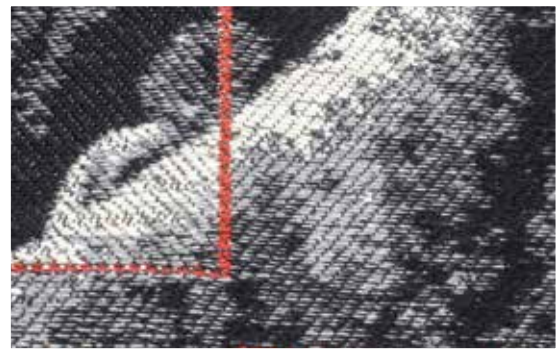
**WHICH PART OF THE WHOLE
(FIG TREE, OCEAN, EARTH)
DOESN'T NEED OUR CARE?**

47 x 28 inches (119 x 71 cm)

Silk, wool

Lampas and samit.

Warp: 40/2 silk; singles silk/wool; 60/2 silk
Wefts: 1/10 silk noil, 2/80 wool;
110/2 tex wool; 30/2 silk hand dyed red



Photos by Suzy Furness

SUZY FURNESS

Ilkley, Queensland, Australia

**DO NOT USE IMAGES OF
FLOWERS FOR ASSESSMENT**

41 x 16 inches (104 x 40.5 cm)

Silk, wool, cotton

Lampas.

Warp ratio tie-down:background = 1:2.
Warp: 40/2 silk; 10/1 silk plied with wool
Tie-down warp: 60/2 silk
Wefts: yellow cotton; 48/2 wool in two
colors of green



Photos by Suzy Furness

BRENDA GIBSON

London, England, UK

CITYSCAPE REFLECTIONS

59 x 8 inches (150 x 20.5 cm)

Silk

Shaded satins.

100% spun silk, 60/2 nm

24-shaft AVL Workshop Dobby Loom



Photos by Kieran Stevens

ROBIN HALLER

Olmsted Township, Ohio, USA

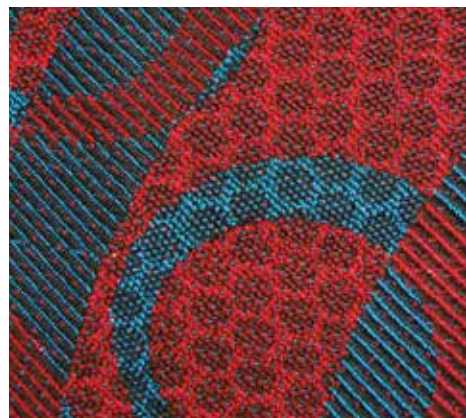
GRAVITY OF REALITY

40 x 28 inches (101.5 x 71 cm)

Cotton, rayon

Yarns: 10/2 mercerized cotton; dyed rayon

Digital Norway TC2 hand-Jacquard loom



Photos by Robin L. Haller

BONNIE INOUE

Hotchkiss, Colorado, USA

CELEBRATION IN VENICE

89 x 18 inches (226 x 46 cm)

Tencel, silk

Turned polychrome three-tie weave with interleaved patterns in threading.

Warp: 20/2 Tencel; 10/2 Tencel
Weft: 60/2 black silk and fine red reeled silk used together



Photos by Bonnie Inouye

BONNIE INOUE

Hotchkiss, Colorado, USA

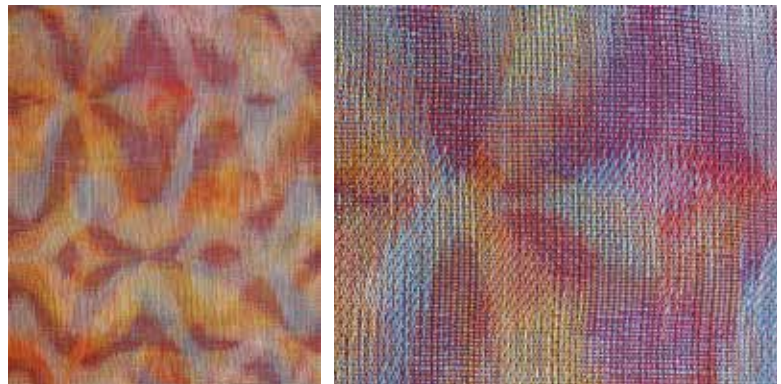
DAYDREAM

22 x 19 inches (56 x 48 cm)

Tencel, cotton

Turned polychrome three-tie weave with interleaved patterns in both warp and weft.

Warp: 10/2 and 20/2 Tencel, hand dyed
Weft: 16/2 and 20/2 cotton



Photos by Bonnie Inouye

WENDY LANDRY

Waverley, Nova Scotia, Canada

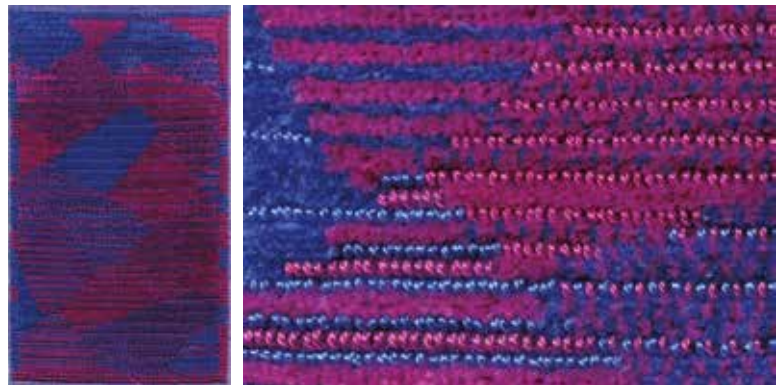
IDENTITY

10 x 5.5 inches (25.5 x 14 cm)

Cotton

Polychrome velvet pick-up; two pile warps on Gros-de-Tours ground cloth.

20/2 mercerized cotton



Photos by Wendy Landry

MOLLY MCLAUGHLIN

Hampton, New Hampshire, USA

FIREFLIES AND JELLYFISH

35 x 22.5 inches (89 x 57 cm)

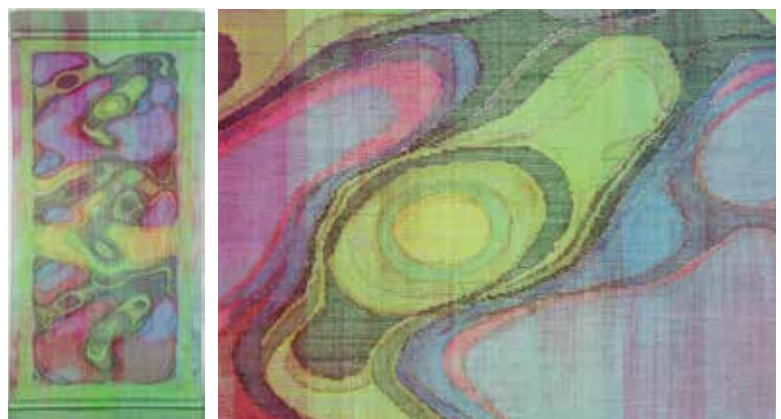
Silk

Theo Moorman Technique.

240/2 silk set at 200 epi

Warp: airbrushed (painted)

Weft: dip-dyed (both ground and pattern wefts)



Photos by Brian McLaughlin

JENNIFER MOORE

Santa Fe, New Mexico, USA

PARQUET PERMUTATIONS I

41 x 11.5 inches (104 x 29 cm)

Cotton

Double weave.

20/2 cotton



Photos by Daniel Quat

WENDY MORRIS

London, England, UK

MAKING IT MINE

120 x 31 inches (305 x 79 cm)

Silk, stretch viscose, silk fabric

Handwoven untied lampas.

60/2 nm silk;

28/2 nm stretch viscose;

inkjet-printed commercial silk fabric



Photos by Wendy Morris

SANDRA RUDE

Atascadero, California, USA

THE SEA IN MY DREAM

14.5 x 24.5 inches (37 x 62 cm)

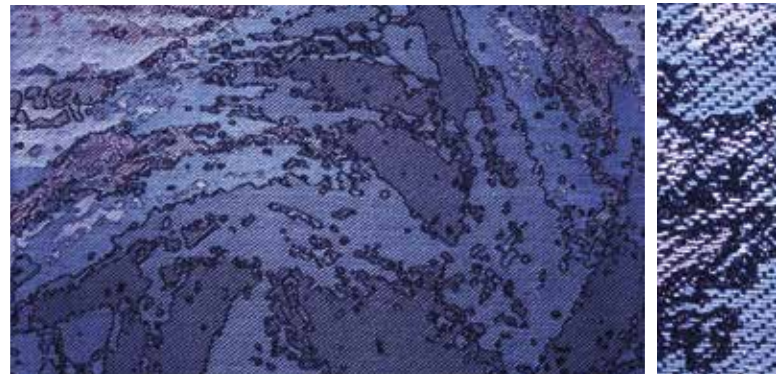
Cotton, Tencel, bamboo

Woven on a Jacquard loom using weft-backed satins.

Warp: 20/2 cotton, black

Wefts: 20/2 Tencel, 20/2 cotton,

16/2 bamboo



Photos by Sandra O. Rude

ALICE SCHLEIN

Greenville, South Carolina, USA

DUBIOUS ALPHABET

22 x 14 inches (56 x 35.5 cm)

Cotton

Jacquard woven double plain weave.

20/2 mercerized cotton



Photos by Alice Schlein

ALICE SCHLEIN

Greenville, South Carolina, USA

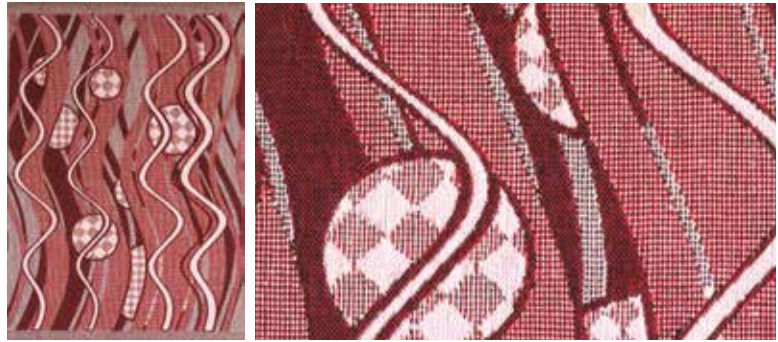
PINK HARLEQUIN

19.5 x 14 inches (49.5 x 35.5 cm)

Cotton

Jacquard woven double plain weave

20/2 mercerized cotton



Photos by Alice Schlein

DEBORAH SILVER

Cleveland Heights, Ohio, USA

PLANNING THE REVOLUTION

20 x 16 x 1 inches (51 x 40.5 x 2.5 cm)

Wool, mohair, cotton

Split-shed variation of tied beiderwand.

Weft: wool and mohair

Warp: 8/4 cotton warp



Photos by Deborah Silver

NORMA SMAYDA

Saunderstown, Rhode Island, USA

DESERT FLOWER

68 x 8 inches (173 x 20 cm)

Silk

Handwoven ondulé textile in a two-block, three-shaft twill.

Straight lines in the warp formed by both color changes and twill blocks highlight the undulations.

Woven with a fan reed.



Photos by Janet Cooper

LYNN SMETKO

Southlake, Texas, USA

NO SECRETS

72 x 11 inches (183 x 28 cm)

Silk

Shadow weave in four colors: two very light, two very dark. Tubular double weave selvedges.

Yarns: 60/2 silk



Photos by Lynn Smetko

SUSIE TAYLOR

San Jose, California, USA

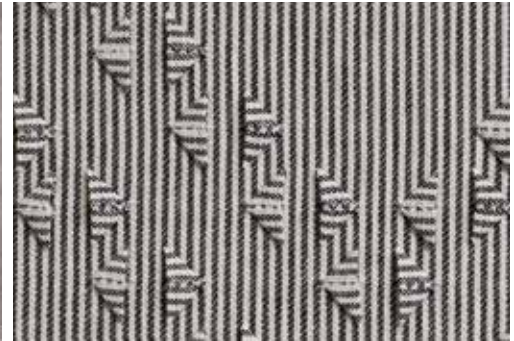
UNTITLED (W17 BW STRIPES X)

27 x 21 inches (68.5 x 53 cm)

Linen

Origami and weaving techniques. Discontinuous pleats woven into the fabric are folded into geometric compositions.

20/2 and 30/3 Normandy linen



Photos by James Dewrance

BARBARA J. WALKER

Salem, Oregon, USA

PARACAS

6 x 4 x 4 inches (15 x 10 x 10 cm)

Cotton, linen

Ply-splitting. The use of inversions (cords frequently changing directions during the work) permits the creation of intricate patterns.

Artist-made four-ply cotton and linen cords



Photos by Barbara J. Walker

LESLEY WILLCOCK

Swineshead, England, UK

TUSCAN SUNSET

92 x 21 inches (233.5 x 53 cm)

Silk

Four-colour double weave with graded five-end satins.

60/2 silk

32-shaft computer assisted Louet Megado loom



Photos by Lesley Willcock

CAROL WOOTEN

Pawtucket, Rhode Island, USA

NAPA VALLEY VINEYARD

72 x 11 inches (183 x 28 cm)

Bamboo, rayon

Advancing twill.

Yarns: Bamboo 12 with rayon ribbon accents. Hand-painted warp.



Photos by Carol L. Wooten