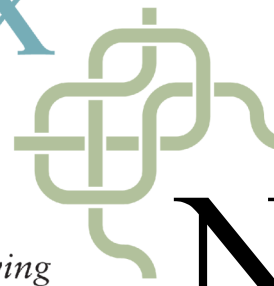


COMPLEX WEAVERS

Encouraging curiosity, exploration, innovation in weaving

December 2017 | Number 118



Newsletter

In this issue

President's Letter
Board Happenings
Complexity 2018
40th Anniversary Book
Kathi Spangler Scholarship
CW Gathering: CHT Art
Camp
Bateman Study Group
Seminars 2018
2018 Budget
Classifieds & Events

President's Letter

2017 has been a busy year and we try to share all of that with you in the CW *Newsletters*. Here are some highlights, but please read on for all of the details!

Seminars 2018

Mark your calendars! Online registration for *Seminars 2018* opens on February 4, 2018 at 1:00 p.m. US Central Standard Time. The conference kicks off Tuesday July 10, followed by three full days of classes and events, and ends with a celebration of Complex Weavers' 40th Anniversary on Friday afternoon, July 13, 2018. The registration fee includes all classes, events, and meals at the Peppermill Resort in Reno, NV. Complete details can be found at www.complex-weavers.org/seminars-2018/ Please spread the word and hope to see you there!

Kathi Spangler Awards

Speaking of *Seminars*, the generous donations to CW in memory of Kathi Spangler and her love of Complex Weavers and CW *Seminars* will be used for awards toward *Seminars 2018* registration fees. Details can be found in this Newsletter (page 5-6). Please note that the deadline for the writing contest, "*I'd rather be at Seminars than anywhere else because ...*" has been extended to January 4, 2018. Why not sharpen those pencils and enter?

Complexity 2018: Innovations in Weaving

CW's juried international biennial exhibit, *Complexity*, will be on exhibit May 29 to July 13, 2018 at the Metro Gallery in the lobby of Reno City Hall. The call for entry, via *Submittable*, is open through January 15, 2018, 11:59 p.m. US Mountain Standard Time. Complete details can be found at www.complex-weavers.org/complexity-2018/ The first entries are coming in. What are you weaving for *Complexity 2018*?

Area Liaisons

There are some vacant positions in our Area Liaison roster. A few regions will be redefined to facilitate coverage. The current list of Area Liaisons can be found at www.complex-weavers.org/contact/area-liaisons/. If your area doesn't have an Area Liaison and you are interested in serving CW in that capacity, please contact Alice van Duijnen, 2nd VP and Area Liaison Coordinator (alice.van.duijnen@kpnmail.nl) to learn more.

2018 Annual Budget

The 2018 Annual Budget is posted in this Newsletter (page 8-9). In January, the Board will review and approve the budget for the 40th Anniversary book, *Eight Shafts: Beyond the Beginning*, and incorporate it into the 2018 Annual Budget. Our budgets in *Seminars* and non-*Seminars* years are quite a bit different due to the ebb and flow of activity around Seminars. Based upon the 2018 budget, no increase in dues is necessary at this time.

New CW-Endorsed Regional Gathering for 2018

Deb McClintock is organizing a CW-Endorsed Regional Gathering during Contemporary Handweavers of Texas Art Camp this March. Details are in this Newsletter (page X). CW encourages members to organize regional gatherings, and provides a policy and guidelines to help, found at <http://www.complex-weavers.org/wp-content/uploads/2016/11/Policy-Guidelines-for-CW-Endorsed-Events-Approved-2016.pdf>. An article by Leslie Killeen about an event she organized appears in the October 2017 *CW Journal* (pages 11-14). If you might be interested in organizing a regional gathering in your area, contact your Area Liaison or Alice van Duijnen.

Gifting Complex Weavers

As always, Complex Weavers runs on the power of its volunteers. All of those activities and benefits that you love wouldn't happen without our volunteers or funding. Please agree to help if asked, or contact a Board or Committee Chair if you would like to help in a particular area. Contact information can be found at www.complex-weavers.org/contact/. If you can't help by volunteering, please consider a tax-deductible donation to the fund of your choice: *Complexity*, Manuscript Recovery Fund, Memorial Fund for Special

Projects, or the Friendship Fund. Details can be found at www.complex-weavers.org/donate-to-cw/

Warmest wishes for the holidays to you and yours!

Happy Weaving,
Lynn Smetko



Gay McGearry

Board Happenings

Online July Board Meeting
October 16, 2017 to November 20, 2017

This meeting was held electronically via email with the meeting agenda and position papers posted on the CW Board Yahoo Group website. Below are the key actions from the Board.

President, Lynn Smetko, called the meeting to order on October 16, 2017.

Treasurer

The treasurer, Carla Tilghman, presented a third quarter financial report, which was accepted by the Board. Carla also presented a draft budget for 2018, which the board discussed and voted to adopt.

Seminars 2018 – Status Report

Planning is moving along well for the 2018 Seminars at The Peppermill in Reno. The charges for the 2018 Seminars will be \$435 for participants and \$350 for companions.

Complexity 2018 – Status Report

Planning is also in progress for Complexity 2018, getting the word out about the show and the entry deadline of January 15, 2018.

Newsletter – Annual Status Report

Discussed adding a “Behind the Scenes” series to future *Newsletters* to let membership know what each board and committee member does to keep CW functioning.

40th Anniversary Book

Some of the original production team have had to withdraw, leading to schedule slips. It is still possible the book will be ready for Seminars 2018. Discussed taking pre-orders for the book at Seminars if the book is delayed.

Advertising – Annual Status Report

New advertisers are buying space in the *Journal*, helping to defray expenses. Briefly discussed policy for advertising copy deadlines.

Area Liaisons – Report

A few regions are currently without an Area Liaison. Local events in the UK and the southeast US show how the liaisons can bring about exciting mini-conferences.

New Business: Changes to CW Website

Held preliminary discussion regarding the possibility of including a blog on the CW website, what its purpose would be, what such a blog should contain, and who would be responsible for contributing content. Decided that a Publicity Chair would be useful in making these decisions; a committee was formed to define the role of Publicity Chair.

Adjournment

There was a unanimous vote to adjourn the meeting on November 20, 2017.

Carla Gladstone
Secretary

COMPLEXITY 2018: *Innovations in Weaving*

What will you submit to *Complexity 2018*? The entry deadline of January 15, 2018 is coming up soon. Entering this juried members’ exhibit is a way to get one’s creative juices flowing while at the same time supporting Complex Weavers. The exhibit will be held at Metro Gallery, the modern downtown Reno gallery inside City Hall.

It is helpful to know what information will be needed on the form before beginning the online entry process. Note that a partially completed entry form can be saved and finished later. The prospectus contains detailed eligibility and entry requirements.

The first step is to create a free account and password on *Submittable’s* website, accessed here: <https://www.complex-weavers.org/complexity-2018/>. Required fields include category, title, materials, techniques, dimensions, weight, photographer, and insurance value. Images are uploaded in .jpg file type and the gallery has requested a resume/biography document that is no more than 3 pages in length. Acceptable file types for upload are .doc, .docx or .pdf. Each entry will need a brief description of your focus or inspiration.

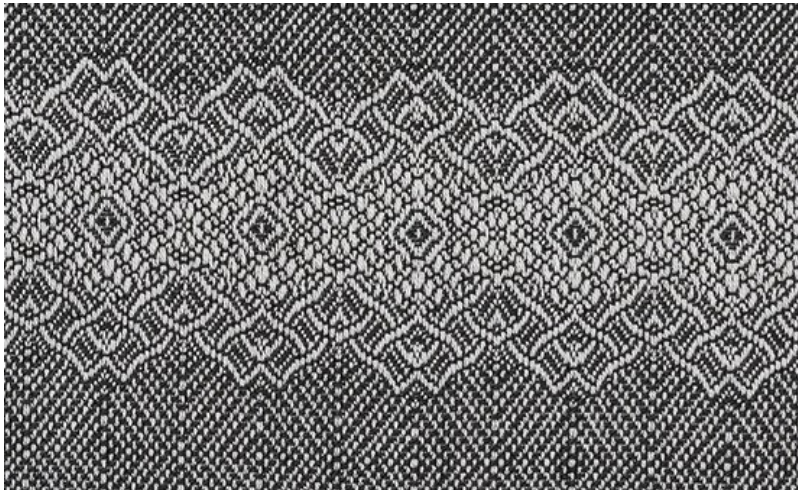
Entries will be assigned a number and jurors will not be able to see information such as name, address, resume/biography, photographer, collaborator, and insurance value. Fields that the jurors will not be able to see are noted on the entry form.

There is a required checkbox on the form confirming that the artist agrees to Terms of Use, which includes consent and liability statements. Payment occurs at the end of the form and is according to the number of entries (1-\$20, 2-\$40, 3-\$60). Entrants select the correct number of entries and \$ amount from the dropdown list then pay with a credit card or PayPal.

Artists are responsible for ensuring their contact information such as email address, phone, and street address are kept up-to-date in *Submittable* throughout the entry and exhibit periods.

Please note: If you happened to see the *Complexity* "Call for Entries" listing in the Winter 2017 issue of *Shuttle, Spindle & Dyepot*, you may have noticed that the deadline was incorrectly published as January 1, 2018. The correct deadline is 11:59 PM MST on January 15, 2018.

Susan Bowman
Chair, *Complexity 2018*



Ivy DeHart

Consider a Donation to CW

Our website now has the capability to accept online donations.

There are four funds to choose from, described here:

<https://www.complex-weavers.org/donate-to-cw/funds/>.

The link to make a donation is:

<https://www.complex-weavers.org/donate-to-cw/>

Please consider a contribution to the fund of your choice to support the mission of CW and the many services provided to its members. Thank you!

40th Anniversary Book

Eight Shafts: Beyond the Beginning Personal Approaches to Design

Each day we make new steps towards our new book. Putting together a book of this type is a massive effort which takes the skills of many people. Cally Booker and I worked on the intake form and the website. Leslie Killeen continues to work on in-take, asking for missing or revised information and helping with editing and review. Linda Davis, Janney Simpson, and I reviewed the pieces for inclusion. My son Zac Autio, a graphic designer, went through the photos in great detail and helped a number of people improve their photography, either directly or through me. Leslie, Linda, and I edited the biographies. Leslie started the reference file.

In the last three months there have been some changes in personnel. Linda Davis has decided to take a smaller role but others have stepped up to help. Past-President Wendy Morris has taken on layout and we are currently roughing out the shape of the pages. Julie George is working on editing the weaving information and some of the other text. Mary Underwood is also helping with editing. Others have helped with advice, trials, and feedback. I am here, there, and everywhere, but editing and formatting the drafts to be educational is my personal joy. It is challenging to orchestrate the pieces, but things are coming together. We are fortunate to have found so many talented and capable workers, several on short notice.

At the *Seminars 2018* we are planning on an informal exhibit of pieces from the book. Please hold onto your piece, if possible, if you are a contributor and either bring it to *Seminars* or find a way to get it there with a friend. If it is already sold, given away, or too big to travel, it's not a problem. We just want others to have a chance to see a sampling of the amazing work which has been submitted. We probably won't have final copies of the book for Semi-

nars, but we will be taking pre-orders. Watch for the Pre-order form to come!

Laurie Autio
Co-Editor,
40th Anniversary Book

Reflecting Windows—Summer
Evening Shawl
Fran Osten



"Northwoods" Towels
Janet Hayman

Kathi Spangler Scholarship Fund Awards

\$1100 was generously donated to the Kathi Spangler Fund, in honor of Kathi Spangler who passed away unexpectedly in 2016 and who would have been President of CW 2016-2018. The majority of donors requested that the funds be used for scholarships to *Seminars* and that Kathi's sense of fun be incorporated. With that in mind the CW Board approved the following four awards, which can all be awarded at *Seminars 2018*. General rules for the awards are noted at the end of this document. We hope that you have fun, in Kathi's honor, with the awards!

1. **First-Time *Seminars* Attendee Drawing**

A random drawing of first-time attendees that register and check in to *Seminars 2018*.

Method: Registrants will check a box when registering identifying themselves as a first-time attendee. Upon check-in at *Seminars*, their name will be deposited into a box from which the winner will be drawn. The winner will be announced during *Seminars 2018*.

Award: The winner will receive a refund of the basic *Seminars 2018* registration fee up to \$375, as long as they have registered for *Seminars* and checked in.

2. **Writing Contest: "I would rather be at *Seminars* than anywhere else because ..."**

Write a fun essay, poem, limerick, or haiku for the answer. This challenge is open to all CW members.

Method:

- Submission: The deadline is January 4, 2018. Submit your response by attaching it to an email sent to the following email address: CWVicePres@gmail.com. The subject for the email should be "Kathi Spangler Writing Contest."
- Do not put your name on your entry attachment, but make sure it is on the email that you send. We will assign each entry a number to ensure anonymity.
- Only one entry to the writing contest per member please.
- The anonymous entries will be judged by a committee of three CW members. The winner notified by Lynn Smetko

on or before January 18, 2018.

Award: The award is for \$375 applied towards the basic registration fee for either *Seminars 2018* or *Seminars 2020*, and the winner will be allowed to register for the event at which they will be using the scholarship award. If the funds are unable to be used by the recipient for either of these two events, they will be added to CW's Scholarship Fund.

3. **People's Choice Award for "Fun in Weaving at *Seminars*"**

Seminars 2018 attendees will choose among the items on display during the Fashion Show, Off the Runway, and the Poster Session that embody the best sense of "Fun in Weaving." (*Items in Complexity will not be considered because they have their own award system.*)

Method: Each attendee will be given a ballot in their registration materials upon check-in at *Seminars 2018*, and may deposit their ballot in a box at *Seminars*. Voting will close after all events Thursday night, be tallied and announced on Friday. The owner of the item garnering the most votes will win, as long as they are registered for *Seminars* and checked in.

Award: A refund of \$175 of the *Seminars 2018* registration fee. In the event of a tie, that amount will be distributed evenly among those with the most votes.

4. **40th Anniversary Celebration**

It is CW's 40th anniversary. In celebration of that, the 40th person to register for *Seminars 2018* will get \$175 towards their registration fee.

Method: The *Seminars 2018* Registrar will identify the 40th registrant according to the date and time that registration was recorded. The winner will be announced during *Seminars 2018*.

Award: A refund of \$175 of the *Seminars 2018* registration fee. In the event that the registration falls through, or that individual later cancels, the next registrant (#41, etc.) will get the award.

GENERAL RULES:

- Winners must be active CW members at the time of contest entry and judging.
- No one may win more than one Kathi Spangler Award; awards

will be applied in the order given out.

- Award payment may, at the discretion of the Treasurer, be made within two weeks after *Seminars 2018* (or 2020 for the Writing Contest) closes.
- It is strongly encouraged that winners give back to CW by way of volunteering to help with a CW activity of their choice or writing an article for the *Journal* within the next two years.

Complex Weavers Gathering Contemporary Handweavers of Texas Art Camp

CHT's upcoming Art Camp will be held March 23-26, 2018 at The John Newcombe Tennis Ranch in New Braunfels, TX. Newly offered this year, to complement the formal classes, is an Independent Study block. While the Independent Study block can be used for personal projects, we are also offering a Complex Weavers gathering during this time. Consider joining us in the Independent Class sessions and take advantage of the meeting facilities which CHT has already blocked out to work on a personal project, enjoy sharing with other CW members during the day, and enjoy the social events/night classes surrounding the CHT Art Camp. **Space is limited** at CHT Art Camp so sign up soon! When you register for Independent Study **watch for the CW meet up option** checkbox. This lets us know you are interested in participating in the CW portion.

This will be the first year we try out this relationship and if it interests enough of us, we can propose and explore more class options for the 2020 Art Camp. I have volunteered to be the go-between for the two organizations and facilitate the CW/CHT experience. I plan to order Complex Weavers study group notebooks for exploration by members & Art Camp attendees, and will work further with folks as they register as to what else we could offer in the Complex Weavers Independent Study option for 2018. Consider this a grand learning experiment for all! We will plan on offering short time slots during the CW independent study sessions for participating members to sign up to present something in the spirit of sharing. It could be as simple as "what I'm working on now" or "I need help with a particular problem" to "look at this new technique" to "watch what I can do on the

computer" to ... who knows?

By all means, if the planned day courses interest you sign up for them! Just be aware you must join CHT as the registration prerequisite for the Art Camp or Independent Study. We are supporting the regional organization.

CHT Art Camp cost is \$375 up to \$495 depending on housing arrangements and includes meals and evening classes. Details on CHT Art Camp are here:

<https://www.weavetexas.org/cht-art-campretreat/>

The Independent Study option is detailed here:

<https://www.weavetexas.org/cht-art-campretreat/art-class-class-options/>

One must be a member of CHT to attend the CHT Art Camp and these details are here:

<https://www.weavetexas.org/membership/>

Thank you for considering this Complex Weavers fellowship opportunity. Please contact me at debmcclintock@me.com or via phone at 512-565-2071 if you have any questions about the CHT CW meet up details.

Bateman Study Group Starting a New Year

The Bateman Study Group will begin its eighth year in January 2018 with Monograph 36, Blends. Openings are now available. See the Study Group section on the CW website for details about the group (<https://www.complex-weavers.org/study-group/bateman-weaves/>). If interested, please contact study group chair Linda Davis at tomlin@bendcable.com

CW Seminars 2018



Planning is in full swing for Seminars 2018!

Have you thought about your contribution to the Silent Auction? This event always brings excitement to the attendees. Bidding gets hot and heavy! You can find the donor form and instructions on the website

(<https://www.complex-weavers.org/seminars-2018/events-2/>).

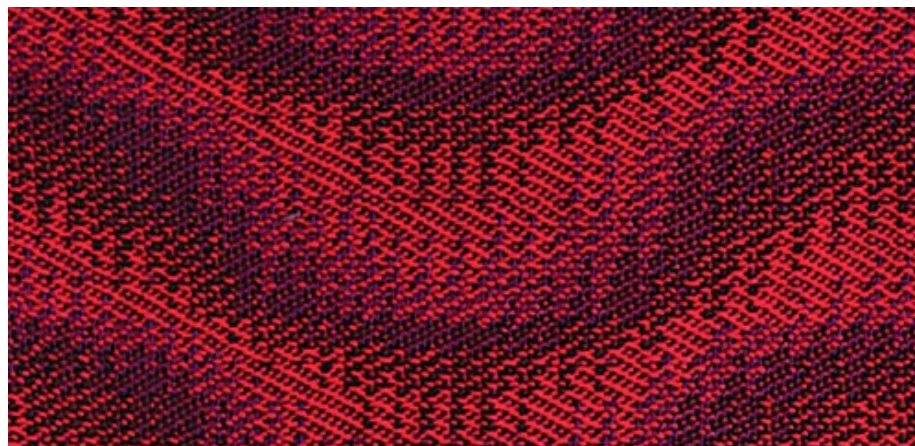
Your donation supports our wonderful showcase, *Complexity*, the CW biennial exhibit.

And don't forget the Marketplace. Make your treasures available to your fellow CW members. There are no limits on products or pricing. Let us know your space requirements.

Registration begins February 4th, 1:00 pm CST.

Happy holidays to all.

Marguerite Kaufman and Kathy Alexander
Co-chairs, *Seminars 2018*



Theo Wright

Complex Weavers	Proposed Budget		
Income	2017 Income to date	2017 Budget	2018 Proposed Budget
CW Journal - In			
Ads	\$3,155.00		
Back Issues sold	\$178.00		
CW Publications - In		\$4000.00	\$4000.00
Collingwood DVDs	\$75.00		
Greatest Hits	\$1,248.00		
Old Books, CD @ \$15	\$45.00		
Compilations	\$90.00		
Postage - In	\$310.68		
CW Merchandise - Pins	\$15.00	\$50.00	\$50.00
Bank			
Interest Income	\$97.69	\$200.00	\$200.00
Membership - In		\$38,000.00	\$40,000.00
US 1 yr	\$12,978.45		
US 2 yr	\$14,370.00		
Canada 1 yr	\$1,960.00		
Canada 2 yr	\$1,610.00		
International 1 yr	\$2,725.00		
International 2 yr	\$3,780.00		
Complexity Fund		\$1,000.00	\$1,000.00
Contributions	\$505.00		
Seminars 2018			
Registration 189@ \$430.00			\$81,270.00
Companion Fees/Meals			\$350.00
Special Event Donation			\$1,000.00
Study Group Dues			
Silent Auction		\$1000.00	\$1000.00
Scholarship Fund		\$250.00	\$250.00
MSS Recovery Fund	\$50.00	\$200.00	\$200.00
Other Gifts			
Total Income	\$43,193.42	\$44,700.00	\$129,320.00

Expenses	2017 Expenses to Date	2017 Budget	2018 Proposed Budget
Area Rep - Out		\$100.00	\$100.00
Awards		\$250.00	\$250.00
Fees		\$1,600.00	\$1,600.00
Bank			
Paypal	\$904.37		
Credit Card Fees	\$16.30	\$125.00	\$100.00
CW Journal - Out		\$30,000.00	\$30,000.00
Envelopes and labels	\$755.00		
Postage	\$2,385.16		
Printing	\$33,108.37		
C Merchandise - Out			
Postage	\$3.12		
CW Publications - Out			
Shelp-8 Shaft book	\$106.08		
Postage	\$628.04		
Membership expenses		\$200.00	\$200.00
Publicity	\$200.00	\$500.00	\$500.00
Taxes, legal	\$20.00	\$100.00	\$100.00
Study Group Dues out			
Computer/Web			\$2000.00
Hosting package	\$600.00		
Adhoc sup 2hr @ \$135	\$270.00		
Development10hr@\$135	\$1,350.00		
Domain Registration	\$60.41		
Maintenance upgrades	\$1,528.05		
Complexity 2018		\$8,489.00	
Expenses	\$192.62		
Gallery Fee	\$200.00		
Dummy Entries	\$36.02		
Journal WSD advert	\$500.81		
Diane Fabeck Award		\$500.00	\$500.00
Seminars 2018			\$84,000.00
Awards			
Scholarship		\$70.00	
Election	\$622.80	\$650.00	\$650.00
Officers		\$300.00	\$300.00
President	\$152.00		
Awards, misc	\$132.00		
Library			\$100.00
HGA Membership	\$50.00	\$100.00	\$100.00
2006 Seminar transfer		\$1000.00	
Total Expense	\$43,621.15	\$48,084.00	\$124,308.00

Classifieds

Ply-Splitting from Drawdowns: Interpreting Weave Structures in Ply-Split Braiding by Barbara J. Walker

Learn how to use any single layer drawdown for ply-splitting. Many illustrations and photos guide you through the process. Finishing techniques are included and gallery pages inspire. \$34 USD plus shipping.
www.barbarajwalker.com

Supplementary Warp Patterning: Turned Drafts, Embellishments & Motifs by Barbara J. Walker

This comprehensive book by the authority on supplementary warp weaving will teach you that two (or more) warps are indeed better than one. Chapters on methods, design, and warping are included. \$35 USD plus shipping.
www.barbarajwalker.com

Hand Looms, Supplement #120, \$10.

A Warp-Weighted Loom; The Carlisle Historical Society Loom; Looms for Ingrain-Carpet Weaving; History of Newcomb Loom Company; Newcomb Loom Models. \$10. *Hand Looms, Supplements #1 to #10*, on CD or flash drive. \$15.

Make checks payable to and mail to The Spinning Wheel Sleuth, P. O. Box 422, Andover, MA 01810.
www.spwhsl.com

Events

The Box Project: Uncommon Threads

Collector Lloyd Cotsen challenged 36 international fiber artists to create a three-dimensional work to fit inside a standard box. This exhibition is on view at the George Washington University Museum and The Textile Museum, September 30, 2017–January 29, 2018. museum.gwu.edu/boxproject

Florida Tropical Weavers' Guild Conference

Held on Lake Yale in Leesburg, FL, March 15-18, 2018. For more information, <http://www.ftwg.org/Conference.htm>

The Sky's the Limit

The Montana Association of Weavers and Spinners will hold its biennial conference at Big Sky, MT, June 13-17, 2018. For more information, <http://www.bozemanweaversguild.org/maws-2018/>

Gender Bend: Women in Wood, Men at the Loom

A multi-media exhibition at the Fuller Craft Museum (Brockton, MA) through March 11, 2018. The exhibition features male weavers alongside female wood turners—two populations that have been traditionally underrepresented in their fields. For more information, <https://fullercraft.org/exhibitions/current/>

Your Journal:

Share Your Weaving Knowledge and Experiences

Inside every CW member is a story and wealth of knowledge! Sharing our experience and knowledge is the heart of CW—unlike other publications, we do not solicit articles from individuals outside our organization. In an effort to “share information and encourage interests”, Complex Weavers welcomes articles from individual weavers as well as study group members. Material for the *Journal* is given priority according to the date received. Late or lengthy submissions are subject to available space. Classified and commercial advertisements should be sent to the Advertising Manager. Address changes may be made by logging on to the website and updating your member profile or by contacting the Membership Chair. If you do not receive your *Journal* when you think you should, please sign in to the Membership directory to confirm that your membership and contact information are current.

2017-18 Publication Schedule:

June 2018: Deadline March 15, 2018

October 2018: Deadline July 15, 2018

February 2019: Deadline November 15, 2018

Journal Editor: Ruth MacGregor at CWJournalEditorRM@gmail.com

Newsletter Editor: Christine Jeryan at cjeryan@comcast.net

Editing Team: Mimi Smith, Janet Stollnitz, Prue Hill, and Elaine Plaisance

Advertising: Angela Schneider at akspins@comcast.net

Membership/Mailing List: Amy Norris at CWMembership@amyfibre.com

Printing and Distribution: Lynn Smetko at CWPresidentLFS@gmail.com

CW *Journal* Article Guidelines are posted on the CW website or can be obtained from the Editor. Please consult them before starting or submitting your article. The Guidelines will answer a lot of your questions and save you time. Your *Journal* staff, all volunteers, are ready and eager to help you with a contribution.