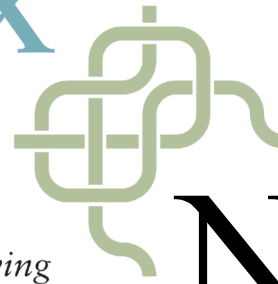


COMPLEX WEAVERS

Encouraging curiosity, exploration, innovation in weaving

September 2017 | Number 117



Newsletter

In this issue

President's Letter
Board Happenings
Call for Nominations
Complexity 2018
Putting Faces to Names
Annual Meeting Report
40th Anniversary Book
Kathi Spangler Scholarship
Regional CW Events
Librarian's Corner
Seminars 2018
Classifieds & Events

President's Letter

Summers in odd-numbered years are prime time for regional conferences that offer classes, opportunities to visit with weaving friends, inspiration from inspiring show entries and, of course, the chance to do a bit of shopping with the vendors! I attended both Contemporary Handweavers of Texas and New England Weavers Seminar (NEWS) and truly enjoyed my time at each. It was great fun to catch up with CW members at conferences. I hope that many of you had the opportunity to enjoy a summer conference as well.

During this time, your CW Board has continued to forge ahead and I'd like to share some highlights with you.

Annual General Meeting and Installation of New Officers

The 2017 Annual General Meeting and the installation of the incoming CW officers took place at NEWS. Thank you to the NEWS Board and members for the warm welcome. Your newly-elected Board members are: Carla Gladstone, Secretary; Carla Tilghman, Treasurer; Alice van Duijnen, 2nd VP over the Area Liaison program; and Jayne Flanagan, Study Group Coordinator who is staying on for a second term. Many thanks to outgoing Board members: Beryl Moody, Secretary; Kathy Warner, Treasurer; and Agnes Hauptli, 2nd VP. We thank our great volunteers, past and present, for serving in these positions.

Seminars 2018

The *Seminars 2018* Committee, chaired by Marguerite Kaufman and Kathy Alexander, is very hard at work these days gathering signed leader and keynote contracts, planning events, compiling the conference schedule, and creating the *Seminars 2018* website and registration module. While we are all eager to see exactly what is being offered during *Seminars 2018*, please be pa-

tient. The Committee is eager to share with you and the information will be online as soon as it is ready and accurate. On the [CW homepage](#), click on the Ruby Seminars Button to look for information. Volunteers will be needed in many capacities—if you are asked, please say “yes”!

Room Reservations at the Peppermill

Meanwhile, if you are planning to attend *Seminars 2018*, now is the time to make room reservations at the Peppermill through the HGA website. CW and HGA members are both reserving rooms and the rooms are going fast. If you do not reserve early you might not get a room.

This next part is very important. The Peppermill is giving CW the Seminars meeting and event rooms free of charge *if* we meet our room rental quota. Reservations need to be made through the [HGA website](#) for the room reservations to count towards fulfilling our room quota. The Peppermill has a generous cancellation policy: there is no penalty if a room is cancelled before 24 hours prior to a stay. The rates for the rooms in our block include waiving the resort fee at the time of payment, which make the rates more attractive than renting rooms outside of our block of rooms.

Complexity 2018

The [Prospectus for Complexity 2018](#), chaired by Susan Bowman, is posted on the CW website. The submission deadline is January 15, 2018. What are you making for the show?

40th Anniversary Book

Work continues on the 40th Anniversary book. Laurie Autio, Editor, shared a preview of the biography section. The 70+ CW contributors represent an impressive range of knowledge, talent, and love of the art of weaving.

Website for Mobile Devices

In recognition of the fact that many of our members access the CW website on their phones and tablets, the Board approved funds to improve the CW mobile experience. You can now access all of the features of the CW website easily on your mobile screens. Thank you to Cally Booker, our Website Chair, for spearheading this project.

Kathi Spangler Fund Awards

Funds collected in honor of Kathi Spangler will be used for four awards related to *Seminars*. The awards were designed to highlight Kathi's love of CW and *Seminars* and her sense of fun. Read about how to participate in this *Newsletter*.

Election 2018

Please join me in welcoming the Nominating Committee members for 2018: Stacey Harvey-Brown (Chair), Marianne (Mandy) Heggsviet, and Peg MacMorris. We thank them for agreeing to serve on this committee. The positions of President and First Vice President are up for election in 2018.

As you can see, there's a lot going on behind the scenes to make your CW experience valuable. I thank all of our volunteers for their work on behalf of CW and urge others to get more involved as well. If you are interested in being considered for an officer position, want to recommend someone, or would just like further information, please contact any of the Nominating Committee members. If you are interested in getting more involved with CW in some other way, please contact a Board member or Committee Chair in your area of interest. Contact information can be found on the inside front cover of our *Journal* or use the "[Contact](#)" link at the top of every page on the CW Website. Volunteers make the CW world go around!

Happy Weaving,

Lynn Smetko



Tien Chiu

Board Happenings

Online July Board Meeting
July 17, 2017 to August 13, 2017

This meeting was held electronically via email with the meeting agenda and position papers posted on the CW Board Yahoo Group website. Below are the key actions from the Board.

President, Lynn Smetko, called the meeting to order on July 17, 2017 .

Treasurer's Quarterly Reports

The report from the outgoing Treasurer noted that we had a good year, and included a reminder that a large amount of cash will be required at some point to pay for the hotel at CW Seminars.

Report from the Annual Meeting

Because there wasn't a quorum, it was an informational meeting only. President Lynn Smetko gave an overview of the Complex Weavers organization. Jayne Flanagan spoke about the Study Groups, Marjie Thompson described the Manuscript Recovery Fund, and Laurie Autio spoke about the 40th Anniversary Book project.

Audit Report

The Board hired an accountant to file the 2016 taxes and to perform an informal review of our books. The books and accounts were found to be in order. A recommendation was made to reduce the number of income and expense categories, and Carla Tilghman, Treasurer, will evaluate this.

Report on New Printer for Complex Weavers Journal

The June CWJ was printed and mailed by a new printer. Overall, we are very pleased with the quality, service, and cost of the new printer, which saved about \$2000. A few copies of the *Journal* were mailed with a section of blank pages, but these were quickly replaced.

Complexity 2018

Planning is in progress, and the Board discussed advertising and promotion. The Prospectus went live on the CW website, with an entry submission deadline of January 15, 2018.

40th Anniversary Book

Laurie Autio's team is making progress with photo editing and text preparation.

Review of Strategic Plan

The 2016-2018 Strategic Plan was given an annual review. It was encouraging to see that some goals had already been met. The Board added new goals to encourage members to organize regional CW events, and also to encourage Study Groups to create and share electronic reports and sample books. Other new goals include to develop guidelines to standardize the organization of *Complexity*, and to create the position of Communications Chair. The Strategic Plan can be found on the CW website under "Resources".

New Business

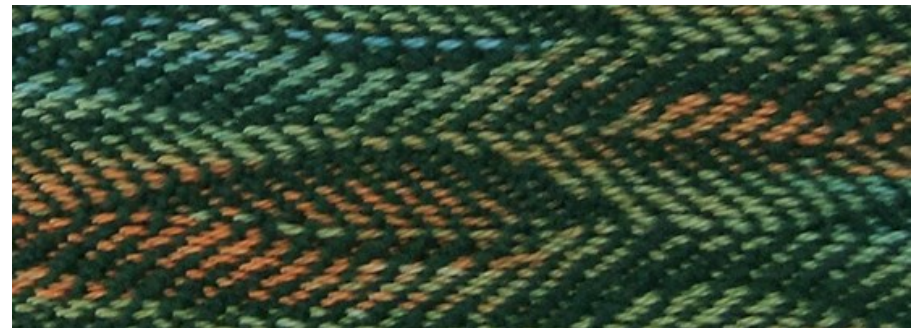
Cally Booker reported about the vendor who hosts and supports the CW website. The Board voted to pay the vendor to make the website mobile-friendly, for better viewing on tablets and smart phones.

Adjournment

There was a unanimous vote to adjourn the meeting on August 13, 2017.

Carla Gladstone
Secretary

Kathy Buse



Call for Nominations

The following positions are due for election in 2017:

President

First Vice-President

If you are interested in one of these positions, or if you know someone you would like to see in office, please let the Nominating Committee know by **30 November 2017**.

Ballots will be distributed electronically in March and voting will take place in April, 2018.

Nominating Committee members:

- Stacey Harvey-Brown (Chair, France)
- Marianne (Mandy) Heggsviet (Canada)
- Peg MacMorris (US)

For more information on what these roles entail or to nominate someone, contact the Nominating Committee Chair using the [Contact](#) link on the CW website.

Without our wonderful volunteers CW would not exist. Please consider running if you are asked, or volunteering if you have an interest.

Consider a Donation to CW

Our website now has the capability to accept online donations.

There are four funds to choose from, described here:

<https://www.complex-weavers.org/donate-to-cw/funds/>.

The link to make a donation is:

<https://www.complex-weavers.org/donate-to-cw/>

Please consider a contribution to the fund of your choice to support the mission of CW and the many services provided to its members. Thank you!

COMPLEXITY 2018: *Innovations in Weaving*

The committee hopes all our members are hard at work designing and weaving something for **Complexity 2018: Innovations in Weaving**. The prospectus is available at <https://www.complex-weavers.org/complexity-2018/prospectus/>

Art work may be submitted in any of four categories:

Apparel and accessories (examples include: jacket, vest, scarf, purse, necklace)

Home furnishings including functional textiles (examples include: pillow, towel, rug, placemats)

Yardage (raw edges must be hemmed)

Width: 18 inches (45.7 cm) to 45 inches (1.1 m)

Length: 3 yards (2.7 m) to 5 yards (4.6 m)

2- and 3-dimensional work (examples include: wall hanging, sculptural work)

2-D Maximum: 48 inches x 48 inches (122 cm x 122 cm)

3-D Maximum: 12 inches x 24 inches x 12 inches (30 cm x 60 cm x 30 cm)

A change from last year is that there is no prohibition against an artist having more than one entry accepted. The entry fee of \$20/entry is unchanged from previous exhibits. The weight of each entry must not exceed 20 lbs (11.4 kg).

I can't wait to see members' work displayed in the light, modern Metro Gallery in the lobby of Reno City Hall. Complex Weavers is fortunate to have the proposal accepted for this centrally-located gallery which has security monitoring and experienced art technicians to hang the exhibit. The space also includes a small area with tables, seating, and a barista-style coffee and panini bar.

Submittable has been chosen as our online call-for-entries provider. Their system allows highly customizable entry forms and their support team has been terrific. **Complexity's** call opens at 12:01 AM MST on October 1, 2017 and closes at 11:59 PM MST on January

15, 2018. More details about how to submit your work will be posted to the website as the time gets closer.

Susan Bowman
Complexity 2018 Chair

Putting Faces to Names

One of the advantages to in-person CW meetings like Seminars or regional meetings is the opportunity to put a face with a name. Did you know you can do the same via our on-line Members Directory?

After searching for member(s), either by name or area, simply click on their first name (the blue-underlined hyperlink) to see their full profile, including a picture.

But this only works if we all put a photo in our profiles!

How to add a photo to your profile:

1. Log in to the Complex Weavers site.
2. Click on My Profile in the upper right menu.
3. Scroll down a little bit to the section labeled "Avatar."
4. Select "Choose File" to select a photo from your computer.
5. It will automatically be uploaded to your profile.
6. Scroll all the way to the bottom of your profile and click UPDATE PROFILE.

That's all there is to it!

So, please take just a minute to add a picture to your profile so we can all put faces with names.

Hope to **SEE** you all soon.

Amy Norris
CW Membership

Annual Meeting Report

The Annual General Meeting of Complex Weavers was held on Friday, July 14, 2017 at 12:30 pm at Smith College, Northampton, MA during the New England Weavers Seminar. President Lynn Smetko presided with Jayne Flanagan as Secretary Pro Tem. Twenty-eight CW members were present, with an additional thirty non-members.* Lynn welcomed everyone to the meeting and explained that this was an informational meeting as well as the required Annual General Meeting for Complex Weavers. She explained that no business could be transacted lacking the quorum of 10% of the current membership. No items on the agenda required action.

Lynn relayed information from the following chairmen, highlighting benefits of membership:

Membership – Amy Norris
Seminars 2018 – Marguerite Kaufman & Kathy Alexander
Complexity 2018 – Susan Bowman
CW Journal – Ruth MacGregor
Newsletter – Chris Jeryan
Website – Cally Booker
Marketplace – Amy Norris
Library – Jean Hosford
Advertising – Angela Schneider
CW Awards Coordinator – Ginger Kaldenbach

Study Groups

Coordinator Jayne Flanagan explained Study Groups and displayed recent works of the "Fine Threads" and the "24 (shafts) More or Less" Study Groups. One member brought a "Beriau" notebook.

Manuscript Recovery Fund

Chairman Marjie Thompson explained the use of the Fund and encouraged donations.

40th Anniversary Book: *Eight Shafts and Beyond*

Co-Editor Laurie Autio presented a PowerPoint with examples that will be in the book, plus discussion.

The floor was opened for comments and questions.

Lynn official installed the newly-elected officers:

Jayne Flanagan – 2nd term Study Group Coordinator

Carla Gladstone – Secretary

Carla Tilghman – Treasurer

Alice VanDuijnen – 2nd VP over Area Liaisons

The next annual meeting will be at *Seminars 2018* in Reno, NV.

The meeting adjourned at 1:15 pm.

Jayne Flanagan
Secretary Pro Tem

40th Anniversary Book

Eight Shafts: Beyond the Beginning Personal Approaches to Design

Editing of various kinds and finalizing photos are proceeding. Recently, Leslie Kileen, Linda Davis, and I have been working on the biographical entries for each weaver. With roughly 150 words each, these longer bios provide an intriguing snapshot of CW at this moment. We have gone through this material very carefully, in my case probably at least 15 times. Each time, I continue to be impressed by the contributors, their thoughts, their passion, and their dedication to learning despite their varied paths and experience to get there. Their words speak strongly to who we are as members of Complex Weavers.

Diversity

The 72 weavers come from nine countries: United States, Canada, United Kingdom, Scotland, Netherlands, Ireland, France, Australia, and New Zealand. Of those, 55 (roughly similar to the percentage of US members in CW) are from the United States (from 22 states, with Massachusetts and California topping the list with eight each). They have been weaving for three years to more than sixty, with small children and in retirement, in apartments and professional

studios, as a professional artist and as a shoed-in hobby, on no shafts to eight shafts to computer dobbies, drawlooms, and Jacquard looms. Arising from equally diverse backgrounds, these weavers have trained as artists, accountants, scientists, teachers, engineers, and every profession in between. With styles ranging from ultra-traditional, to countryside comfortable, to avant-garde, they weave for homes, exhibits, teaching, and the pure pursuit of knowledge. Some are quiet introverts preferring to work alone; others are exuberantly extroverted community people who love to share.

Passion

One of the first things I noticed when reading the biographies is the weavers' use of language to describe their relationship to weaving. Some make me smile, but all cause a nod of recognition of the CW weaving family. Words like *captivated*, *cherish*, *committed*, *serious*, *passionate*, *fascination*, *enamored*, *love affair*, and *lust* (thought that would get your attention!) stud the writing. They are *bitten by the bug*, *immersed*, *hooked*, *fueled by joy*, *mesmerized*, and *obsessed*. They admit to *planning vacations around textile-related symposia, workshops, and gallery tours*; speak of their *inherent tendencies toward complexity*; and of *finding new structures like catnip*. They find they *can't seem to help coming up with more ideas* and that *when they began weaving, everything came together*.

What if...?

Although the words they use vary quite a bit, interest in learning is a common theme throughout the entries. Mentors, teachers, classes, publications, guilds, and study groups feature prominently. The weavers speak of *improving, widening horizons, exploring, researching, figuring out, stretching, experimenting, creating, and inventing*. They talk of *insatiable curiosity, dedication, design possibilities, breaking the grid, pushing boundaries, creative pursuit, in-depth studies, problem solving, discovery, challenge, scholarly needs, and how things relate*. There is *always more to learn, infinite ways to create pattern, intellectual challenges involved in designing, the pleasure of exploiting weave structures, and enjoyment of restrictions which force creativity* - or equipment and techniques which *place no limits on what can be done*. They enjoy *distilling the essence* and relish the *ah-ha moment*. Their designs may be a *microcosm for creating order*, be motivated by a desire to solve *technical aspects of engineering the interlacements*, or express an interest in *exploring the effects of color interaction*. One asks, "*Why weave more [than a sample] once you understand how it works? There are so many more*

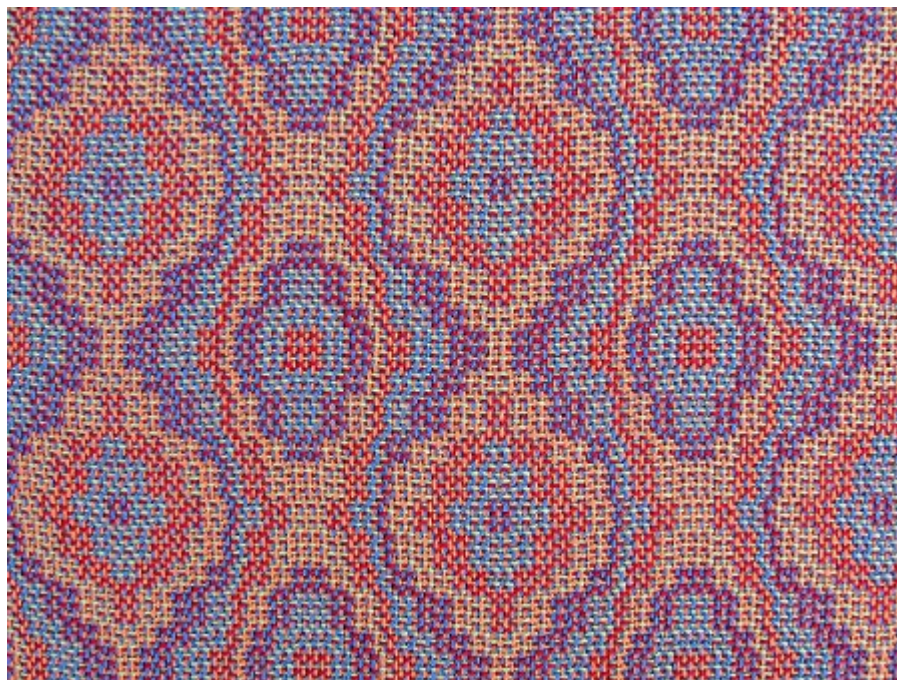
things to learn and try!" while others seek knowledge by working in series.

In the end, there are two statements which sum up the weavers, and by extension, Complex Weavers:

The more you learn about weaving, the more you realize there is to know.

Desire and love for a thing make all effort and work insignificant.

Laurie Autio
Co-Editor, 40th Anniversary Book



Eva Stossel

Kathi Spangler Scholarship Fund Awards

\$1100 was generously donated to the Kathi Spangler Fund, in honor of Kathi Spangler who passed away unexpectedly in 2016 and who would have been President of CW 2016-2018. The majority of donors requested that the funds be used for scholarships to *Seminars* and that Kathi's sense of fun be incorporated. With that in mind the CW Board approved the following four awards, which can all be awarded at *Seminars 2018*. General rules for the awards are noted at the end of this document. We hope that you have fun, in Kathi's honor, with the awards!

1. **First-Time *Seminars* Attendee Drawing**

A random drawing of first-time attendees that register and check in to *Seminars 2018*.

Method: Registrants will check a box when registering identifying themselves as a first-time attendee. Upon check-in at *Seminars*, their name will be deposited into a box from which the winner will be drawn. The winner will be announced during *Seminars 2018*.

Award: The winner will receive a refund of the basic *Seminars 2018* registration fee up to \$375, as long as they have registered for *Seminars* and checked in.

2. **Writing Contest: "I would rather be at *Seminars* than anywhere else because ..."**

Write a fun essay, poem, limerick, or haiku for the answer. This challenge is open to all CW members.

Method:

- Submission: The deadline is November 15, 2017. Submit your response by attaching it to an email sent to the following email address: CWVicePres@gmail.com. The subject for the email should be "Kathi Spangler Writing Contest."
- Do not put your name on your entry attachment, but make sure it is on the email that you send. We will assign each entry a number to ensure anonymity.
- Only one entry to the writing contest per member please.

- The anonymous entries will be judged by a committee of three CW members. The winner notified by Lynn Smetko on or before December 15, 2017.

Award: The award is for \$375 applied towards the basic registration fee for either *Seminars 2018* or *Seminars 2020*, and the winner will be allowed to register for the event at which they will be using the scholarship award. If the funds are unable to be used by the recipient for either of these two events, they will be added to CW's Scholarship Fund.

3. **People's Choice Award for "Fun in Weaving at *Seminars*"**

Seminars 2018 attendees will choose among the items on display during the Fashion Show, Off the Runway, and the Poster Session that embody the best sense of "Fun in Weaving." (*Items in Complexity will not be considered because they have their own award system.*)

Method: Each attendee will be given a ballot in their registration materials upon check-in at *Seminars 2018*, and may deposit their ballot in a box at *Seminars*. Voting will close after all events Thursday night, be tallied and announced on Friday. The owner of the item garnering the most votes will win, as long as they are registered for *Seminars* and checked in.

Award: A refund of \$175 of the *Seminars 2018* registration fee. In the event of a tie, that amount will be distributed evenly among those with the most votes.

4. **40th Anniversary Celebration**

It is CW's 40th anniversary. In celebration of that, the 40th person to register for *Seminars 2018* will get \$175 towards their registration fee.

Method: The *Seminars 2018* Registrar will identify the 40th registrant according to the date and time that registration was recorded. The winner will be announced during *Seminars 2018*.

Award: A refund of \$175 of the *Seminars 2018* registration fee. In the event that the registration falls through, or that individual later cancels, the next registrant (#41, etc.) will get the award.

GENERAL RULES:

- Winners must be active CW members at the time of contest entry and judging.
- No one may win more than one Kathi Spangler Award; awards

will be applied in the order given out.

- Award payment may, at the discretion of the Treasurer, be made within two weeks after *Seminars 2018* (or 2020 for the Writing Contest) closes.
- It is strongly encouraged that winners give back to CW by way of volunteering to help with a CW activity of their choice or writing an article for the *Journal* within the next two years.

Regional Complex Weaver Events

Would you like to meet Complex Weavers from your region?

Is a well-known teacher touring near you who could give a workshop beyond the basics?

Do you have good memories from the classes at *Seminars*?

Are you not able to attend *Seminars* because it is just too far away?

Wouldn't it be great to do a show and tell with other Complex Weavers?

CW Regional Events could facilitate all of the above and YOU could organize a regional event endorsed by Complex Weavers!

If this idea appeals to you, please check out the further explanation and guidelines for such an event on our website under CW Documents in the Member Resources area or via this [link](#). Contact the 2nd Vice President via the [Contact Form](#) if you have any questions or suggestions.



Heather Macali (detail)

Librarian's Corner

In the past few months a number of items have been added to the library's collection courtesy of HGA. When they decided to dissolve their library, they invited all member guilds to peruse their holdings and make requests—no individuals and no sales. The HGA library list was long and daunting and I asked everybody who forwarded the list to me for suggestions- Peggy Hart volunteered and did an initial pass through. I removed volumes already in our library and added others. My selection criteria was anything remotely interesting as long as it was weaving- or textile-related. The submitted list was long. Mimi Anderson volunteered to submit the list (according to HGA's specifications at a specific East Coast time...and she was on the West Coast!). Then, we waited to see what our portion of the distribution would be.

Opening the package was a little like getting a mystery box. I knew it contained only a small portion of the books on our list since it weighed only 14 lbs (and the list had upwards of 100 books). We got a nice little collection of books on Guatemalan textiles, a book on costume and identity in highland Ecuador, a book in Finnish on pictorial weaving (lots of diagrams), several smaller books, and a gem on indigo textiles. Now that the height of summer activities has passed, the books will get entered into LibraryThing. Meanwhile, if any of the descriptions evoke an interest, please contact [me](#) and I'll work to get them sent out. (Put CW Library in the subject line.)

I've been working on accessing materials that should be in the collection, but, for some reason aren't. *Ars Textrina* Volume II must be stellar, as there have been several requests for articles in it. I decided to contact the authors directly and see if reprints were still available. Patricia Cunningham came through and donated a copy of her article: *Ohio's Woven Coverlets: Textile Industry in a Rural Economy* as well as several of her other publications. In June, Pat Hilts donated one of her extra copies of *Ars Textrina* Volume III that contains her article on the 17th and 18th century twills weaves in German linens.

So, now that summer travel and other distractions are almost past, it's time to focus on weaving again. Please consider using

the CW Library to expand your horizons and provide study material.

Jean Hosford
Librarian

CW Seminars 2018



We look forward to seeing you at Complex Weavers *Seminars 2018*, July 10-13, 2018 at the Peppermill Hotel in Reno, Nevada!

The *Seminars 2018* Committee, led by Co-Chairs Marguerite Kaufman and Kathy Alexander, is working hard. Plans are well underway, and it looks like another exciting conference! The Instructor Selection Committee has determined which classes will be offered, and the Keynote speaker has been selected. Marg Coe, *Seminars 2018* Website Chair, is making a major push to develop the *Seminars 2018* website. Amy Norris, Registrar, is working to develop the RegOnline site so that registration can begin in early February. In addition to our Seminars sessions, we will have our usual valued events: Study Group gatherings, Silent Auction, Market Place, Poster Sessions, the Fashion Show, Off the Runway, *Complexity 2018* and its reception, and the CW Annual General Meeting. In honor of CW's 40th Anniversary there will be a special celebration on the last day.

Volunteers will be needed for many functions. If you know of an area in which you would like to help, please contact Marguerite or Kathy at cw2018seminars@gmail.com. If you are asked to help out with a *Seminars 2018* activity, please say "yes"! I will send out a *Seminars 2018* update email near the end of October.

Thanks to everyone involved in making *Seminars 2018* happen!

Lynn Smetko

Classifieds

Ply-Splitting from Drawdowns: Interpreting Weave Structures in Ply-Split Braiding by Barbara J. Walker

Learn how to use any single layer drawdown for ply-splitting. Many illustrations and photos guide you through the process. Finishing techniques are included and gallery pages inspire. \$34 USD plus shipping. www.barbarajwalker.com

Supplementary Warp Patterning: Turned Drafts, Embellishments & Motifs by Barbara J. Walker

This comprehensive book by the authority on supplementary warp weaving will teach you that two (or more) warps are indeed better than one. Chapters on methods, design, and warping are included. \$35 USD plus shipping. www.barbarajwalker.com

Hand Looms, Supplement #19, \$10.

A Fly-Shuttle Rocker-Beater Loom; A Weaving Apprenticeship; An 18th Century Weaver's House; The Nadeau Hand-Skill Loom; Guildcraft Silent Speed Loom. *Hand Looms, Supplements* #1 to #10, on CD, \$15. The Spinning Wheel Sleuth, P.O. Box 422, Andover, MA 01810. www.spwhsl.com

A Jim Ahrens Damask Drawloom

A drawloom developed by Jim Ahrens needs a new home. The loom is described in early Complex Weaver Newsletters #36-38. The footprint is

10 ft x 38 in and 78 in high. It is a single draw with a 20-shaft counter-marche dobby head.

Contact Nancy Tracy at nancytracy9@gmail.com or 425-778-9155.

Glimakra Standard Vertical Loom

Glimakra Standard Vertical CM, 59" weaving width. 10 shafts/treadles. Bench, Extension, Second beam. Warp-, Lease-, End- sticks, Belly Board, Raddle, Reed, other stuff. Full Texsolv. \$5000. Located in MA. Contact Pam Rathmell at pr0616@gmail.com for pictures or questions.

Events

Spirit Spin Fiber Arts and Mindfulness Retreat

October 6-8, 2017 at the beautiful Kettunen Center in Tustin, Michigan. www.spiritspin.net

The Box Project: Uncommon Threads

Collector Lloyd Cotsen challenged 36 international fiber artists to create a three-dimensional work to fit inside a standard box. This exhibition is on view at the George Washington University Museum and The Textile Museum, September 30, 2017-January 29, 2018. museum.gwu.edu/boxproject

The Shape of Weaving: Hand Weaving of Jan Doyle and Norma Smayda

Hera Gallery, Wakefield, RI, September 8-October 7, 2017. <http://www.heragallery.org/upcoming/>

Your Journal: Share Your Weaving Knowledge and Experiences

Inside every CW member is a story and wealth of knowledge! Sharing our experience and knowledge is the heart of CW—unlike other publications, we do not solicit articles from individuals outside our organization. In an effort to “share information and encourage interests”, Complex Weavers welcomes articles from individual weavers as well as study group members. Material for the *Journal* is given priority according to the date received. Late or lengthy submissions are subject to available space. Classified and commercial advertisements should be sent to the Advertising Manager. Address changes may be made by logging on to the website and updating your member profile or by contacting the Membership Chair. If you do not receive your *Journal* when you think you should, please sign in to the Membership directory to confirm that your membership and contact information are current.

2017-18 Publication Schedule:

February 2018: Deadline November 15, 2017

June 2018: Deadline March 15, 2018

October 2018: Deadline July 15, 2018

Journal Editor: Ruth MacGregor at CWJournalEditorRM@gmail.com

Newsletter Editor: Christine Jeryan at cjeryan@comcast.net

Editing Team: Mimi Smith, Janet Stollnitz, Prue Hill, and Elaine Plaisance

Advertising: Angela Schneider at akspins@comcast.net

Membership/Mailing List: Amy Norris at CWMembership@amyfibre.com

Printing and Distribution: Lynn Smetko at CWPresidentLFS@gmail.com

CW *Journal* Article Guidelines are posted on the CW website or can be obtained from the Editor. Please consult them before starting or submitting your article. The Guidelines will answer a lot of your questions and save you time. Your *Journal* staff, all volunteers, are ready and eager to help you with a contribution.