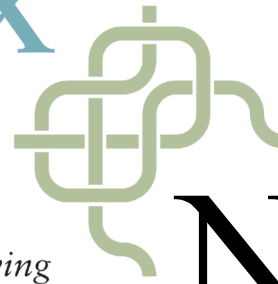


# COMPLEX WEAVERS

*Encouraging curiosity, exploration, innovation in weaving*

March 2017 | Number 115



# Newsletter

## In this issue

President's Letter

Board Happenings

2017 Election

*Seminars 2018*

*Complexity 2018*

South East Gathering

Financial Reports

Librarian's Corner

CW Annual Meeting &  
Gatherings

2017 CW Awards

40th Anniversary Book

Handweaving.net

Classifieds & Events

## President's Letter

Things are happening in the Complex Weavers' world! More details are included in this *Newsletter*, but there are a few items I would like to highlight.

### **2017 Election of Officers and Annual General Meeting**

With March comes our annual election of officers. The Nominating Committee has compiled a terrific slate of volunteers, and the nominees' bios and statements appear on pages 4-6. After the online election in March, the winners will assume office at the time of the 2017 Annual General Meeting, which will be held at NEWS 2017 (New England Weavers Seminar) on July 14, 2017. The location was chosen in honor of Kathi Spangler, as it was her "home" regional conference. If you are attending NEWS, we would love to see you there.

### ***Seminars 2018 and Complexity 2018***

The remark most frequently heard during *Seminars 2016* was the request to realign *Seminars 2018* with HGA's Convergence®. The Seminars Planning Committee has worked hard to make that happen for you. *Seminars 2018* will be held July 10-13, 2018, in Reno, Nevada at the Peppermill Hotel, overlapping and immediately following HGA's Convergence at the same location. Come early and enjoy both *Seminars 2018* and Convergence, all in one location. In addition to the usual activities, Reno's Artown Festival runs the entire month of July, and there will be hundreds of cultural events happening throughout the city. Proposals to lead seminars at *Seminars 2018* are now being accepted. The submission deadline is June 1, 2017. (See page 6 for details.)

*Complexity 2018* will be on display July 6-12, 2018, in a beautiful venue within a few miles of the Peppermill Hotel, and it is being scheduled so that it can be viewed by attendees of both *Seminars 2018* and Convergence. It's time to start planning what you will enter!

## 40<sup>th</sup> Anniversary

2018 is a special year for Complex Weavers, as it marks the 40<sup>th</sup> Anniversary of our founding. In celebration of that, and in honor of Wanda Shelp, the book *Eight Shafts: Beyond the Beginning* is well underway. June 1, 2017, is the deadline for final submission of all materials (see page 14). It's not too late to be a part of it!

We need your help and support to be successful. While there are committees for organizing our valued events and activities, volunteers are needed to help make them happen. Please consider contacting an Event Chairman or Committee Chair to offer your assistance, or say "Yes!" if asked. Volunteering for any task, large or small, is most appreciated. Complex Weavers is an all-volunteer organization: we would be nothing if not for our volunteers! Also, our website now has the capability to accept online donations to a CW fund of your choice. Please help support CW however you can.

Happy Weaving,

*Lynn Smetko*



Antoinette Roy

# Board Happenings

Online January Board Meeting  
January 17, 2017 to February 9, 2017

This meeting was held electronically via email with the meeting agenda and position papers posted on the CW Board Yahoo Group website. Below are the key actions from the Board.

President, Lynn Smetko, called the meeting to order on January 17, 2017.

## Slate of Nominees Announcement

Sheila Carey, the chair of the Nominating Committee, reported that there are four candidates for CW's 2017 election. They are as follows: 2nd Vice President—Alice van Duijnen; Treasurer—Carla Tilghman; Secretary—Carla Gladstone; and Study Group Coordinator—Jayne Flanagan.

## Treasurer's Reports

Annual and fourth quarter financial reports were reviewed for 2016 including those for *Complexity 2016*, *Seminars 2016*, and Special Funds. The Board found that everything is in good order financially. Kathy Warner is leaving the Board after having served as Treasurer since 2009, and the Board expressed their gratitude for her long service in that position.

## Complexity 2018 Status Report

Plans for *Complexity 2018* are progressing nicely. The jurors have been selected and their bios are on the website under the Complexity button. The exhibit will be held on July 6-12, 2018 at the Garden Pavilion in Reno, NV. (See pages 6-7 for full details).

## Seminars 2018 Status Report

As the Board was finishing their online meeting, plans were finalized for *Seminars 2018* dates and venue. The dates will be July 10-13 with an opening ceremony on the evening of the July 10. This will overlap with Convergence (with their consent). The venue for both *Seminars 2018* and Convergence will be the Peppermill Hotel in Reno, NV. The Request for Proposals for seminars leaders will go out shortly. A six-member committee will be

formed to review teacher proposals and suggestions are always welcome. (See page 6).

### **Website Annual Report**

CW's Website Chair, Cally Booker, reported some important changes in the past few months to make the website more user-friendly. The Member's Directory now allows a distinction between Individuals and Organizations. A form for online donations has been added that lets anyone make a contribution to the fund of their choice by PayPal or check. Also, a "Useful Documents" page was put in the Member Resource section, allowing downloading of CW brochures and organizational information. Cally is working to increase the website's functionality on mobile devices, which accounts for a quarter of our website traffic. The website is currently fulfilling the needs of our organization, but may need an upgrade a few years from now to keep up with technological advances.

### **Library Annual Report**

Our Librarian, Jean Hosford, reported that borrowing from the library continues at a fairly consistent pace. This past year has seen donations of books, journals and study group notebooks. In addition, CW authors Martha Reeves and Marty Benson each donated a copy of their new books. The Board will investigate the option of subsidizing library lending postage for overseas members and also continue research into electronic sharing of study group materials. Reports for both subjects will be presented at future meetings.

### **Manuscript Recovery Fund Annual Report**

Marjie Thompson reports that we have \$3500 in our Manuscript Recovery fund, but no potential projects at this time. She welcomes suggestions from the CW membership. Thanks to recent upgrades at our website, donations to the fund can now be made online. The Board expressed its thanks to Marjie for her continuing work to preserve our weaving history and knowledge.

### **Kathi Spangler Seminars Scholarship Guidelines**

The Board reviewed and approved the Kathi Spangler Seminars Scholarship Guidelines. Many suggestions have been implemented in the final guidelines and care was given to keeping them in tune with Kathi's sense of humor. The \$1100 in the fund will be awarded in four scholarships for *Seminars 2018*. Details will be announced later.

### **2017 CW Annual General Meeting Location**

In honor of Kathi Spangler, this year's Annual General Meeting will be held at the New England Weavers Seminar (NEWS) on July 14, 2017 at Smith College in Northampton, MA. The exact time and location will be announced soon.

### **Ideas for New Study Group Topics**

The number of study groups has diminished over the past few years and Study Group Coordinator, Jayne Flanagan, has been at work to compile suggestions for new groups and also new ways to approach them. One of the things mentioned was to increase the CW web presence for the existing groups in galleries and blog entries so that their work is available to a broader audience. Jayne presented a list of potential groups that includes ideas from the Poster Sessions done at *Seminars 2016*. The *Journal* continues to be a resource for Study Group sharing, and the discussion included ways to join articles and web materials, thereby enriching the content for CW members.

### **Next Board Meeting**

The meeting was adjourned on February 9, 2017. The next online quarterly board meeting will begin on April 17, 2017.

Beryl Moody  
Secretary

## **CW Election 2017**

You will soon receive an email notification that will allow you to vote in the Complex Weavers election via a secure internet site. The electronic voting process is simple, free and secure, and we encourage all members to take advantage of the streamlined process to vote. Many thanks go to Amy Norris for managing the balloting. You will receive voting instructions via email shortly.

### **The Nominating Committee**

The Board would like to express its appreciation to the Nominating Committee for recruiting these well-qualified candidates. The Committee, chaired by Sheila Carey, also includes Suzi Gough and Stacey Harvey-Brown.

# The Candidates

Alice van Duijnen

2nd Vice President

In 2002, this fibreholic realized that "later when I am grown up I will buy a loom" was overdue. I started on a small 4-shaft table loom and never looked back. I took classes with Marijke Dekkers in the Netherlands and the second year she pointed me to Complex Weavers as "that group really is something for you". And she was right! Nowadays I weave on a 32-shaft Louet Megado computer dobby, still discovering the endless possibilities it gives. Exploring new structures, variations. Playing with colors and materials. It just never fails to captivate me.



After improving my skills in the Fine Threads Study Group, I am currently a member of the Double Weave Study Group. If possible I do visit the one-day workshops organized in London, which allow me to stay in contact with other European "curious" weavers. To be a weaver in the modern times of internet makes it possible to stay in contact and exchange knowledge and ideas.

I have visited the two last Seminars in Tacoma and St. Charles and really immersed myself in weaving and talking about weaving full-time. Loaded with new inspiration I have ideas for projects at least until the next seminars!

During the last Seminars I realized that all these opportunities to meet fellow weavers are only possible due to volunteers who

help to make it run. Given all that I have received in the past years from this organization, I feel it is now my time to contribute.

In my daytime job I work in automation as business architect and linking pin between business and IT. I trust that my organizational and IT skills will provide added value to this organization.

It is an honour to have been nominated for the position of 2nd Vice President so I can give something back to this organization.

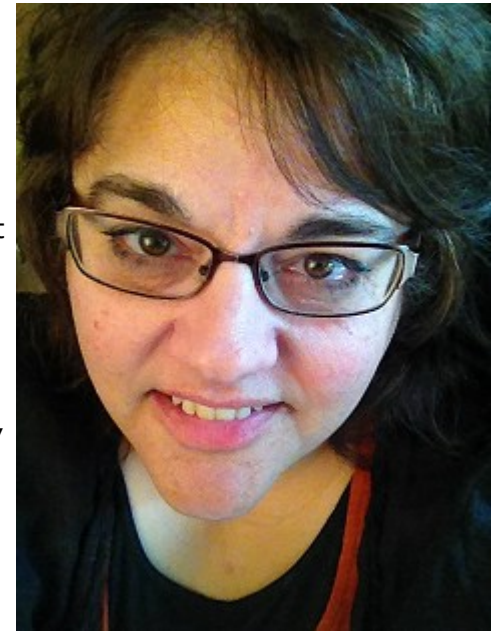
Carla Tilghman

Treasurer

Hi. Weaving and textiles have been a significant part of my life since I learned to spin and weave at age 12. First with small, hand-made frame looms, then back-strap looms followed by rigid-heddle and floor looms.

I worked as a paramedic and paramedic instructor throughout my 20s (you never quite know where life will lead you). As a form of relaxation, I wove, quilted, and taught myself how to dye in order to get "just the right colour", an unending challenge.

In 2004, I earned an MFA in Textiles from Kent State University, having the stellar opportunity to work with Janice Lessman-Moss and a TC1 loom. Most of my subsequent large weavings have been made with computer-assisted looms, a process that lets me think rather endlessly about weave structure and colour interactions. In 2008, I had the opportunity to teach for the Jacquard Center and work with Bethanne Knudson and Oriole Mill, which really expanded my understanding of contemporary software and the





historical developments of industrial weaving. (I'm avoiding using exclamation points, but don't for a second think that these experiences weren't exciting, challenging, and lots of other superlatives.)

Currently, I am an itinerant adjunct instructor, teaching History of Textiles for the University of Kansas as well as Art History and Cultural Studies at Washburn and Baker Universities. Most recently, I have been teaching myself to tablet-weave. The process of creating warp-faced patterns by twisting threads to create a shed is, well, fascinating.

I'm interested in getting more actively involved with Complex Weavers, having become a member in 2012 when I attended my first conference. I've certainly taken advantage of the resources provided by the group and would like to give something back. I'm offering to be Treasurer because of my experience as purchasing officer and training officer as a paramedic. Both positions required me to handle \$200,000 budgets, make purchases, keep records with several different databases, disburse checks, and keep meticulous records for county auditors. The steady pace and rather behind the scenes nature of the position appeals to me. Happy to help and happy weaving.

## Carla Gladstone Secretary

I am endlessly fascinated by the design potential in weaving, braiding, and looping. My interests include slow, hand-manipulated techniques and loom-controlled multi-shaft weaving. My stable of equipment includes 8-, 16-, and 24-shaft looms, a marudai, a takadai, and many inkle looms. I'm particularly interested in double weave and multi-layer structures.

Being a member of Complex Weavers has enhanced my textile life in many dimensions. It was and is greatly rewarding to find other people who are exploring the same type of questions that stimulate me.



My involvement with Complex Weavers began by reading the *Journal* and borrowing Study Group notebooks in the early 2000s. I attended my first Complex Weavers *Seminars* in 2008. I went on to teach at the 2012 *Seminars* and write for the *Journal*. Now that I am retired from my "day job", I have the opportunity to contribute to Complex Weavers in a different way. It is an honor for me to accept the nomination for the position of Secretary.

I have lived in the Washington, DC area for 35 years, where I worked on research and development related to aviation. I volunteer weekly behind the scenes at the Smithsonian's National Museum of Natural History, where I help organize data for the Paleobiology Department. I have been the librarian for the Potomac Fiber Arts Guild for eleven years.

## Jayne Flanagan Study Group Coordinator



I have been hand weaving and spinning since the early 1970s. I enjoy the attention to detail, the planning, the tools and processes of creating anything useful by hand. I explore to understand; my weaving varies widely and I like to sample. Although I almost always use a computer for drafting and record keeping, my looms—everything from backstrap to drawloom—are strictly "sticks and string", easy for me to repair and tweak. And yes, I like pick-up. My attention to detail extends to guild management. My duties in several New England guilds have included; presid-

ing officer, treasurer, newsletter editor and teacher. I also rose through the ranks of the New England Weavers Seminar (NEWS) to serve as its president in 2003.

I joined CW in 2004 through, and still contribute to, the Early Weaving Books and Manuscripts Study Group, participated in the Lace study group, and attended the *Seminars* in Tampa in 2008. The Study Groups are the heart of CW and a fantastic resource for our far-flung members. Building on the experience of the past two years, I will continue to encourage more new groups and greater participation overall.

## CW Seminars 2018



July 10-13, 2018  
Peppermill Hotel  
Reno, Nevada

We are happy to  
announce *Seminars 2018*.  
Mark your calendars now!

In 2018, Complex Weavers celebrate our Ruby (40<sup>th</sup>) Anniversary, and the logo honors that milestone.

*Seminars 2018* will be held overlapping and immediately following HGA's Convergence® at the same location. Our opening ceremony is on the evening of July 10. The Convergence vendor hall will be open through July 9, and their art exhibits through July 12.

Proposals for leading seminars are now being accepted. The deadline for submission is June 1, 2017. Complete details for Proposal Requirements can be found on the Complex Weavers website at: <https://www.complex-weavers.org/seminars-2018/>

Those teaching at Convergence should let HGA know if they are also planning on teaching at *Seminars 2018*; HGA will arrange their teaching schedule so that it does not conflict with that of *Seminars 2018*.

The registration details for *Seminars 2018* will be announced later in 2017, and updated as there is information.

We look forward to seeing you in Reno!

Marguerite Kaufman and Kathy Alexander  
Co-Chairs, *Seminars 2018*

## COMPLEXITY 2018: *Innovations in Weaving*

Your committee has been hard at work focused on the exhibit coinciding with both *Seminars* and HGA's Convergence® 2018 in timing and location. Wouldn't it be great if Convergence attendees got to see our exhibit too? HGA announced Reno as the location and, after several months of searching, we are excited to announce that we have secured a venue about 2 miles from Peppermill, *Seminars'* conference hotel. July is Artown in Reno which made it challenging to find an exhibit location that wasn't already committed for 2018. Suzanne Woodhead, who lives nearby, was consulted about various galleries on our list and performed site visits; thank you Suzanne! Her inputs and visits were instrumental in narrowing down the list and securing this venue.

Arts for All Nevada is a non-profit organization with a beautiful property within a few miles of Peppermill. One building on the property, Garden Pavilion, will house *Complexity 2018*. It's a lovely, light, modern building with a courtyard that we may also use. Garden Pavilion is more typically used for events than art exhibits so we are fortunate they agreed to let us have full use of it for the 9 days, spanning both conferences. Suzanne described the neighborhood as

picturesque with lots of restaurants, good parking, and close to the Nevada Art Museum.

The space is similar in size to previous *Complexity* venues at 750 sq. ft. Adjacent to Garden Pavilion is The Historic Lake Mansion (also part of Arts for All Nevada), built in 1877. Self- and guided tours of this home that is on Nevada's State and National Registers of Historic Places, are free to the public.

As it gets closer we will be looking for members to help staff the exhibit. Works exhibited will not be for sale. We want to encourage all members to enter and make the process as easy for overseas entrants as it is for U.S. entrants.

You may have read on the website that we are very pleased to announce the *Complexity 2018* jurors: Kay Faulkner, Janice Lessman-Moss, and Jette Vandermeiden. A big thank-you to each of them for agreeing to take this on!

**Kay Faulkner** has pursued a weaving career for over 30 years as both a production weaver and a creator of individual designs for solo and group exhibitions. She teaches nationally, internationally, and from her studio. She is fascinated by the potential of the woven structure, from the simple to that of great complexity. Her research is wide ranging and has taken her from the development of woven shibori (in parallel to the work done by Catharine Ellis) to her current research into textile techniques from South East Asia. Articles on these and other topics have been published. Kay lives in Birkdale, Australia. Web: [www.kayfaulkner.com.au](http://www.kayfaulkner.com.au) and blog: [www.kayfaulkner.wordpress.com](http://www.kayfaulkner.wordpress.com).

**Janice Lessman-Moss** is currently Professor and Head of the program in Textile Art at Kent State University. She received her BFA from Tyler School of Art and her MFA from the University of Michigan. Since 1981, she has exhibited her woven art work throughout the United States and internationally, including solo exhibitions at the Galleria Willa in Lodz, Poland, the Museum of Fine Art and Culture in Las Cruces, New Mexico, and at the Kent State University Museum. She has been the recipient of Individual Artist Fellowships from the Ohio Arts Council, an Arts Midwest/NEA Fellowship, and the Governor's Award for Individual Artist in Ohio in 2016. [www.janicelessman-moss.com](http://www.janicelessman-moss.com)

**Jette Vandermeiden** is a widely respected Canadian weaver and teacher with an in-depth knowledge of weave theory and cloth structure. She is a textile consultant on drawloom, Jacquard, and damask to researchers at museums, television, and individuals and has helped develop weaving curriculum for college fiber arts programs. A prolific writer and teacher, Jette has conducted classes and workshops across Canada, USA, England, Holland, and Belgium and is a regular columnist for *FIBRE FOCUS*. Jette weaves and collects linen damask, studying the common use of design elements across time and geographical regions. A focus on loom modifications has led her to develop "baby drawloom" using existing table looms. One of her recent projects is a series of YouTube videos to help weavers solve basic weaving problems: [youtube.com/user/weavingwithjette](https://www.youtube.com/user/weavingwithjette). Her goal is to share weaving skills so this ancient craft will continue to enrich our lives.

We hope everyone is planning to enter! It's a great way to support Complex Weavers and keep your creative energy flowing. Final details for the prospectus are being worked out and will be announced soon!

Susan Bowman  
*Complexity 2018* Chair

## Consider a Donation to CW

Our website now has the capability to accept online donations.

There are four funds to choose from, described here: <https://www.complex-weavers.org/donate-to-cw/funds/>.

The link to make a donation is: <https://www.complex-weavers.org/donate-to-cw/>

Please consider a contribution to the fund of your choice to support the mission of CW and the many services provided to its members. Thank you!



# Registration Continues

## South East Gathering Open to All CW Members

Registration continues through May 1, 2017 for the Complex Weavers' South East Gathering, a one track weekend event open to all CW members. We are pleased to have Alice Schlein sharing her *Explorations in Double Twill* a record of her experiments in double twill, both tied and untied, for dobby and jacquard. In Alice's words "...an exploration of this very interesting structure, and the ways in which I have approached it. There will be slides and woven samples. The lecture is of general interest to shaft loom weavers who have eight shafts and above, but of special interest to dobby weavers, with a few references to jacquard. If you are able to read and understand a weaving draft, you should be comfortable with this material."

See the December 2016 CW Newsletter or CW web site for the full schedule.



**Date:** June 17-18, 2017

**Location:** Yadkin Valley Fiber Room/ Yadkin Cultural Arts Center, Yadkinville, NC

**Cost:** \$100.00 CW members, \$125.00 non-CW members. Meals and lodging are separate.

**Registration:** On line at <https://yadkinvalleyfiberroom.com/> or contact Leslie Fesperman, Fiber Program Coordina-

tor, at [919-260-9725](tel:919-260-9725) or via email at [leslie@yadkinarts.org](mailto:leslie@yadkinarts.org)

**For More Information:** Leslie Fesperman at the above address or Leslie Killeen at [lkilleen@pughkilleen.com](mailto:lkilleen@pughkilleen.com) or <https://www.complex-weavers.org/category/events/> and/ or <https://yadkinvalleyfiberroom.com/> for up to date details.

## CW Financial Reports

### Complex Weavers Balance Sheet Standard As of December 31, 2016

	<u>Dec 31, '16</u>
<b>ASSETS</b>	
Current Assets	
Checking/Savings	
Paypal	1,854.88
US bank checking	60,295.69
US Bank Savings	166,590.98
US Bank CD	20,287.56
Total Checking/Savings	<u>249,029.11</u>
Total Current Assets	<u>249,029.11</u>
<b>TOTAL ASSETS</b>	<u><u>249,029.11</u></u>
<b>LIABILITIES &amp; EQUITY</b>	
Equity	
Retained Earnings	216,262.37
Net Income	32,766.74
Total Equity	<u>249,029.11</u>
<b>TOTAL LIABILITIES &amp; EQU...</b>	<u><u>249,029.11</u></u>



# Complex Weavers

## Profit and Loss Standard

January through December 2016

	Jan - Dec '16
Income	
Complexity Exhibit - In 2016	
Sale of work	525.00
Contributions	575.00
Alice Fund	610.01
Review fees	1,445.16
Total 2016	3,155.17
2018	
Contributions	100.00
Total 2018	100.00
Total Complexity Exhibit - In	3,255.17
Bank fee reimbursement	1.28
Complexity Fund	875.00
CW Journal - In	
Ads	4,149.10
back issues	444.00
Total CW Journal - In	4,593.10
CW Merchandise - In	
Postage	2.00
Pins Sale	97.50
Total CW Merchandise - In	99.50
CW Publications - In	
Collingwood DVDs	
DVD Sales	105.00
Total Collingwood DVDs	105.00
Compilations - In	
Compilation III	24.95
Compilation IV	25.00
Compilation III&IV	990.00
Total Compilations - In	1,039.95
Greatest Hits - In	6,840.42
old weaving books CD \$15	105.00
Postage	902.59
Total CW Publications - In	8,992.96

	Jan - Dec '16
Diane Fabeck Fund - In	2,500.00
Gift Received	
Kathi Spangler memorial fund	1,100.00
Gift Received - Other	500.00
Total Gift Received	1,600.00
Interest Inc	216.17
Library in	
Library dup book sale	249.00
Total Library in	249.00
Membership - In	
1 yr \$35 US	16,103.20
1 yr \$40 NA	2,240.73
1 yr \$45 NNA	4,345.00
2 yr \$70 US	18,420.00
2 yr \$80 NA	2,080.00
2 yr \$90 NNA	4,230.00
overpaid dues	100.00
Dues refund	-100.00
Membership - In - Other	800.00
Total Membership - In	48,218.93
MSS Recovery	150.00
Other Inc	244.00
Seminars 2016 In	
Received from Regonline	49,576.05
Registration fees - Paypal	13,930.00
Companions (not Regonline)	350.00
Transfer from Seminars 2006	1,000.00
Total Seminars 2016 In	64,856.05
Silent Auction	2,071.00
Study Group Dues In	57.00
Total Income	137,979.16
Expense	
Diane Fabeck Best in Show a...	500.00
Awards	
Office supplies	81.60
Postage	35.55
Total Awards	117.15

	Jan - Dec '16
Bank fees	
Paypal fees	1,906.09
Bank fees - Other	192.48
Total Bank fees	2,098.57
Complexity Exhibit - Out 2016	
Advertising	360.00
Artist awards	458.64
Artist payment	525.00
gallery and reception	969.05
reimb excess shipping	589.93
Total 2016	2,902.62
Total Complexity Exhibit - Out	2,902.62
CW Journal - Out	
Envelopes and labels	1,446.46
postage	5,865.11
printing	13,640.00
Software	29.00
Total CW Journal - Out	20,980.57
CW Publications - Out	
Greatest Hits - Out	
printing	5,926.00
Total Greatest Hits - Out	5,926.00
Postage	1,020.53
Total CW Publications - Out	6,946.53
Contributions	500.00
Credit card fees	129.10
Election	636.00
HGA membership	100.00
Membership - Out	
office expense	120.00
Reminder emails	22.98
Total Membership - Out	142.98
Misc	244.00
Officers	
President	164.26

	Jan - Dec '16
Officers - Other	50.00
Total Officers	214.26
Publicity	175.00
Seminar 2006	
Transfer to Seminars 2016	1,000.00
Total Seminar 2006	1,000.00
Seminars 2016 Out	
Insurance	189.96
Complexity bus charter	2,300.00
Pheasant Run Resort	49,777.57
refund	2,500.00
speakers' fees	987.50
speaker mileage	150.00
teacher housing	4,357.32
teachers' stipends	6,212.50
Total Seminars 2016 Out	66,474.85
Study Group Dues - Out	57.00
Taxes, legal expenses	10.00
Web Page	
domain name registration	36.01
Maintenance upgrades	1,945.05
web site fee	2.73
Total Web Page	1,983.79
Total Expense	105,212.42
Net Income	32,766.74

Complex Weavers Annual Budget	2016 budget income	2016 income to date	2017 income		2016 budget expense	2016 expense to date	2017 expense
Income				Expense			
CW Journal ads etc	\$3,000.00	\$4,455.10	\$4,000.00	Area rep expense	\$100.00	\$0.00	\$100.00
CW books, cds, dvd	\$1,000.00	\$7,848.76	\$4,000.00	Awards	\$250.00	\$35.55	\$250.00
CW merchandise	\$50.00	\$82.50	\$50.00	Bank and Paypal fees	\$1,400.00	\$1,803.61	\$1,600.00
Interest Income	\$300.00	\$179.78	\$200.00	Credit card fees	\$100.00	\$116.43	\$125.00
Library income		\$249.00		CW Journal expense	\$30,000.00	\$20,980.57	\$30,000.00
Membership	\$40,000.00	\$39,605.21	\$38,000.00	CW books, cds, dvd	\$6000.00	\$6789.98	\$2300.00
Complexity Fund	\$500.00	\$875.00	\$1,000.00	Membership expense	\$200.00	\$142.98	\$200.00
Scholarship fund	\$50.00	\$0.00	\$50.00	Publicity	\$500.00	\$175.00	\$500.00
Seminars Registration	\$67,705.00	\$64,856.05		Taxes, Legal	\$100.00	\$10.00	\$100.00
Study group dues		\$42.00		Study group dues out		42	
Silent auction		\$2,071.00		Web Page	\$2000.00	1227.79	\$2300.00
Complexity income	\$2,200.00	\$3,055.17		Complexity exhibit	\$6000.00	\$2891.87	\$400.00
MSS Recovery fund		\$150.00	\$200.00	Seminars 2016/18	\$61,402.00	\$66,474.85	\$13,000.00
Diane Fabeck Fund		\$2,500.00		Scholarship	\$70.00	\$0.00	\$70.00
Other gifts		\$1,700.00		Diane Fabeck award		\$500.00	
				Election	\$640.00	\$636.00	\$650.00
				Officers (group emails)	\$150.00	\$214.26	\$200.00
				Library		0	
				Richard Jeryan memorial		500	
				HGA membership		100	
				Seminars 2006 transfer		1000	
Total Income	\$110,455.00	\$127,669.57	\$47,500.00	Total Expense	\$108,912.00	\$103,640.89	\$51,795.00

# Librarian's Corner

I'd like to report that two of the three missing items have been accounted for: Verda Elliot's monograph on symmetry and pattern types came home to the library shelves and the Prairie Wool Companion collection has been located, although not returned yet. Volume 3 of *Ars Textrina* is still at large. Thank you, thank you. It's a relief to restore things to their proper condition.

On another note: one of the benefits of this job is reviewing the materials, either before they are sent out, or in a more leisurely manner as they come back. Recently the Complex Weavers *Newsletter* Number 55 from September 1997 (remember back then?) was borrowed. When the *Newsletter* was returned I decided to try to figure out why it was borrowed—on that account I failed....but, I found a really interesting article that I'd like to share and comment on.

## SMALLER CAN BE BETTER

Nancy Steward

I belong to the smallest study group in Complex Weavers. There are two of us. Rachel Morley is the other member. We work from the Complex Weavers Library. We sent a check to Helen Kiker to cover several sets of books and sample books along with a list of books, sample books, and study group notes that we found interesting. She chooses 2 or 3 that will fill a box and sends them, always a surprise as to what will actually come. We divide the books, each taking one or two. We write up the things that interest us, and depending on time may exchange books before or after we get together. We get together with the books and our notes and totally

analyse what we see. We take apart the structure, the color, discuss why it works for us or why it doesn't. We make lots of detailed notes that a college student would be proud of, and we have learned more from this than from any previous study group either of us have been involved with. I highly recommend a super small study group, especially for anyone who is interested and not around a city with other complex weavers. The study group notebooks and samples are an education in themselves, and even a person working alone can learn a tremendous amount. The CW Library owns dozens of books that are not in guild libraries. It is a tremendous resource. Use it.

The library, as Nancy comments, is a tremendous resource, and it is underutilized. The concept of using the library as a basis for a study group is a stunning idea. I think that, unlike most book borrowing, which is focused on researching or solving a specific problem, a study group could approach the books and study group material with a more open mind. There's a lot to learn.

I am not interested in being the study group leader, but am more than willing to supply books, sample books, and more to one or more small groups who wish to pursue this.

Jean Hosford  
Librarian

## Announcing

### CW 2017 Annual General Meeting

The 2017 Annual General Meeting  
will be held during NEWS 2017  
at Smith College in Northampton, MA  
on July 14, 2017 at noon.

Please join us!



# CW Gatherings at 2017 Regional Conferences

At many of the 2017 regional conferences a Complex Weavers Meet-and-Greet is being hosted. CW members are invited, as well as those interested in finding out what CW is all about. Here is the list of so far, as well as who to contact if you have questions. The list will be updated in the next Newsletter. If you are attending a conference, please come!

Regional Conference	Date	Time	Location	Contact
ANWG <i>Association of Northwest Weavers' Guilds</i>	July 1, 2017	4:30-5:30pm	The Meeting Place, Village Greens Room	Mimi Anderson
CHT <i>Contemporary Handweavers of Texas</i>	June 2, 2017	4:15-4:45pm	TBD	Lynn Smetko
Midwest Weavers Association Conference	June 16, 2017	4:45-5:30pm	TBD	Amy Norris
NEWS <i>New England Weaving Seminar</i>	July 14, 2017 <i>Annual General Meeting</i>	Noon	TBD	Lynn Smetko Jayne Flanagan Marjie Thompson

## 2017 Complex Weavers Awards

The spring and summer regional fiber conferences are just around the corner. Is your conference sponsoring a juried fiber show? If so, would your show like to be considered for awarding a Complex Weavers Award? Information about the award can be seen on the CW website at [www.complex-weavers.org/contact/cw-award-information/](http://www.complex-weavers.org/contact/cw-award-information/). There is a link to view past award winning pieces and also a link to contact Ginger Kaldenbach, the CW Awards Coordinator.

# *40th Anniversary Book*

*Sign up now on web:  
<https://www.complex-weavers.org/40th-anniversary-book/>*

*Submissions Due June 1, 2017*

*Information on web and in  
October, 2016 CW Journal*

*Questions?*

*Laurie Autio*

*<lkautio@comcast.net>*

*Linda Davis*

*<tomlin@bendcable.com>*

*6-block profile draft from Laurie Autio*

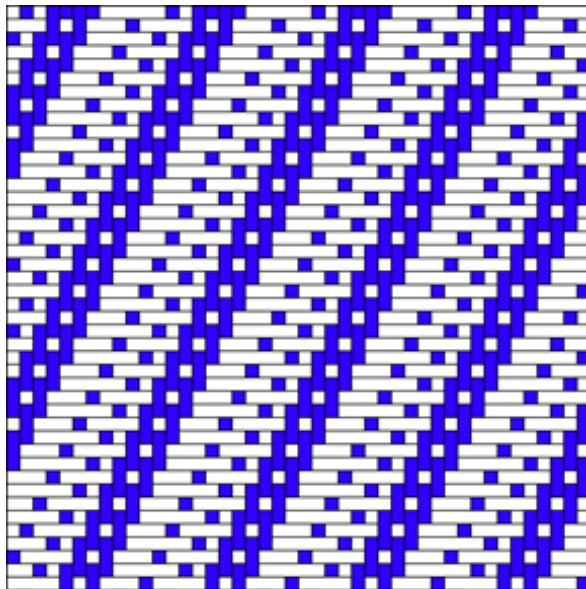
# Handweaving.net Subscriptions

A new subscription system has been added to Handweaving.net where a low-cost subscription is needed to view and download full drafts. Much of the site continues to be completely free, including basic draft access, the digital archive of weaving documents, and more. For more information, please see: <https://www.handweaving.net/subscription>

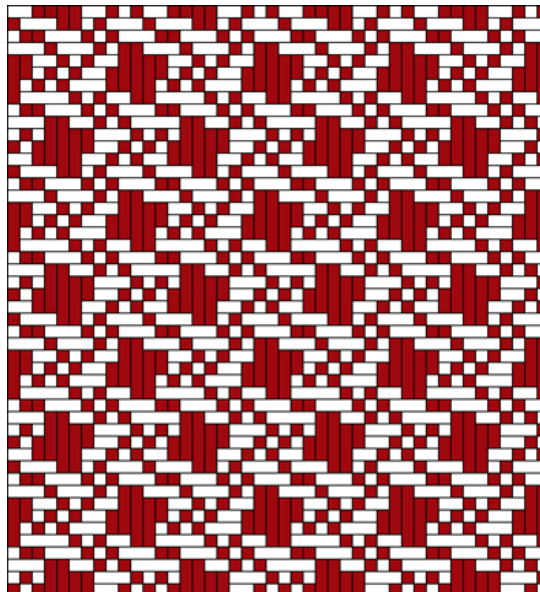
Over the past two years, site visits have more than doubled, which is great, but donations have not always kept pace with this. Some new features and Internet infrastructure have also been added—all of which increases the cost to provide the site while creating a better user experience. We are hoping to exist long-term and to soon be able to expand Handweaving.net significantly with both features and new content. Please consider supporting this important weaving resource with a subscription. Without you, this site would not be possible!

Anyone who supported us in any way since the beginning of 2016 already has a free one-year subscription if we could find a Handweaving.net account for you. If you supported us recently but do not see a complimentary annual subscription upon logging in, please contact us to receive this.

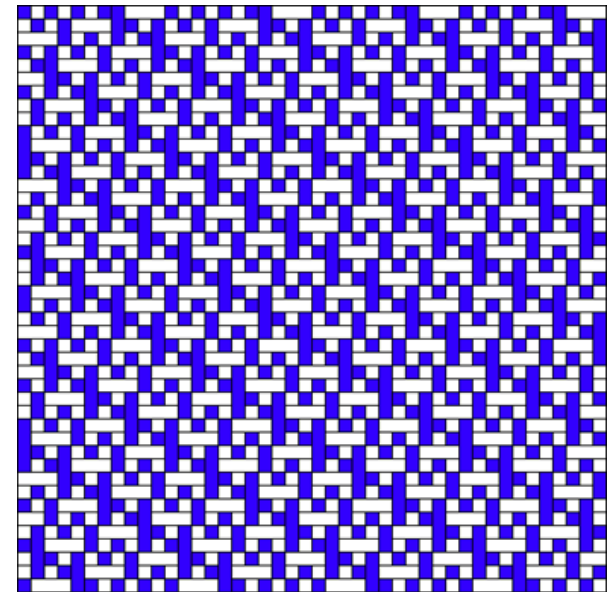
Margaret Coe  
Handweaving.net



Handweaving.net #5238



Handweaving.net #5197



Handweaving.net #5251

## Classifieds

### **Ply-Splitting from Drawdowns: Interpreting Weave Structures in Ply-Split Braiding by Barbara J. Walker**

Learn how to use any single layer drawdown for ply-splitting. Many illustrations and photos guide you through the process. Finishing techniques are included and gallery pages inspire. \$34 USD plus shipping. [www.barbarajwalker.com](http://www.barbarajwalker.com)

### **Supplementary Warp Patterning: Turned Drafts, Embellishments & Motifs by Barbara J. Walker**

This comprehensive book by the authority on supplementary warp weaving will teach you that two (or more) warps are indeed better than one. Chapters on methods, design, and warping are included. \$35 USD plus shipping. [www.barbarajwalker.com](http://www.barbarajwalker.com)

### **Hand Looms, Supplement #19, \$10.**

A Fly-Shuttle Rocker-Beater Loom; A Weaving Apprenticeship; An 18th Century Weaver's House; The Nadeau Hand-Skill Loom; Guildcraft Silent Speed Loom. *Hand Looms, Supplements #1 to #10*, on CD, \$15. The Spinning Wheel Sleuth, P.O. Box 422, Andover, MA 01810. [www.spwhsl.com](http://www.spwhsl.com)

## Events

### **Midwest Weavers Conference: Textiles at the Crossroads**

The Midwest Weavers Conference, June 12-17, 2017, Indianapolis, IN. [www.midwestweavers.org](http://www.midwestweavers.org)

### **ANWG Conference 2017: Treadle Lightly**

The Northwest Weavers Conference sponsored by ANWG will be held in Victoria, B.C. on the grounds of the University of Victoria. Preconference workshops, June 28-30, 2017; conference, July 1-2, 2017. [www.anwgconference2017.com/hello/](http://www.anwgconference2017.com/hello/)

### **NEWS 2017**

NEWS 2017, July 13-16, 2017, Smith College, Northampton, MA. <http://newenglandweaversseminar.com/news-2017-conference-information/>

### **MAFA Conference 2017: A Kaleidoscope of Possibilities**

The MAFA Conference, July 20-23, 2017, Millersville University, Millersville, PA. Madelyn van der Hoogt is keynote speaker. <http://mafafiber.org/conference-2017.php>

## Your Journal:

# Share Your Weaving Knowledge and Experiences

Inside every CW member is a story and wealth of knowledge! Sharing our experience and knowledge is the heart of CW—unlike other publications, we do not solicit articles from individuals outside our organization. In an effort to “share information and encourage interests”, Complex Weavers welcomes articles from individual weavers as well as study group members. Material for the *Journal* is given priority according to the date received. Late or lengthy submissions are subject to available space. Classified and commercial advertisements should be sent to the Advertising Manager. Address changes may be made by logging on to the website and updating your member profile or by contacting the Membership Chair. If you do not receive your *Journal* when you think you should, please sign in to the Membership directory to confirm that your membership and contact information are current.

### **2017-18 Publication Schedule:**

June 2017: Deadline March 15, 2017  
October 2017: Deadline July 15, 2017  
February 2018: Deadline November 15, 2017

Journal Editor: Ruth MacGregor at [CWJournalEditorRM@gmail.com](mailto:CWJournalEditorRM@gmail.com)  
Newsletter Editor: Christine Jeryan at [cjeryan@comcast.net](mailto:cjeryan@comcast.net)  
Editing Team: Mimi Smith, Janet Stollnitz, Prue Hill, and Elaine Plaisance  
Advertising: Angela Schneider at [akspins@comcast.net](mailto:akspins@comcast.net)  
Membership/Mailing List: Amy Norris at [CWMembership@amyfibre.com](mailto:CWMembership@amyfibre.com)  
Printing and Distribution: Lynn Smetko at [CWPresidentLFS@gmail.com](mailto:CWPresidentLFS@gmail.com)

CW Journal Article Guidelines are posted on the CW website or can be obtained from the Editor. Please consult them before starting or submitting your article. The Guidelines will answer a lot of your questions and save you time. Your Journal staff, all volunteers, are ready and eager to help you with a contribution.