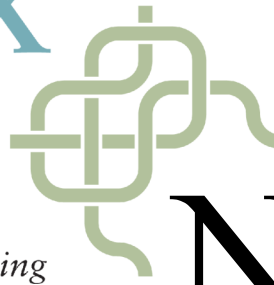


COMPLEX WEAVERS

Encouraging curiosity, exploration, innovation in weaving

December 2016 | Number 114



Newsletter

In this issue

President's Letter
Board Happenings
Librarian's Message
Member Directory Search
Updates
Complex Weaver Events
South East Gathering
Complexity 2018
Seminars 2018 Chairs
Of Interest
Classifieds
Upcoming Events

President's Letter

CW has been very busy behind the scenes this quarter, and much of the activity is summarized in Board Happenings. Here are a few of the highlights.

Marguerite Kaufman and Kathy Alexander are our *Seminars 2018* Co-Chairs. HGA has announced that *Convergence* will be held in Reno, Nevada, July 6-12, 2018. CW is still working on realigning *Seminars* with *Convergence*, and we hope to have an announcement for you soon. Our Co-Chairs and their committee members are working very hard on this highly anticipated event. If they reach out to you for help, please consider volunteering.

Complexity 2018 is moving along nicely thanks to the diligent work of Susan Bowman and her team. The artistry of CW members will be showcased once again in high form. I hope that you are already thinking about what you will submit. Please see Susan's update in this *Newsletter*.

Thanks to Ruth MacGregor, her team, and article authors, the October *Journal* is another stellar issue. Please consider sharing what you are working on with the membership through the *Journal*—[Ruth](#) is always looking for interesting articles to publish. With this issue, we tweaked how our Canadian members receive their copies; timing of their delivery should now be as fast as that of our overseas members. Don't forget that a PDF version of the *Journal* is available on our [website](#).

CW's 40th anniversary project, *Eight Shafts: Beyond the Beginning*, already has 15 sign-ups, with more promised. Complete information was presented in October's *Journal*, and is also on our [website](#), along with the [sign-up link](#). I hope that you have your 8-shaft thinking caps on and are planning something to contribute by the deadline of June 1, 2017. The project needs someone to lead a marketing and publicity campaign for the book. If you have experience in these areas and

can help, please get in touch with [me](#). It's going to be a project we can all be proud of!

Cally Booker, our webmistress, has created a new page under *Resources*, titled [CW Documents](#). This page, behind member sign-in, makes forms available that members might need. Currently found there are our Strategic Plan, the current budget, printable CW Brochures with membership application forms, and the new Policy and Guidelines for CW-Endorsed Events. There is also a link to CW logos for linking CW's website to your blogs and websites. Other changes to the website include an easier sign-in method using your email address (see the article by Amy Norris, Membership Chair, in this *Newsletter*), and being able to search for guilds that are CW members.

One of the goals in our Strategic Plan is to encourage CW-Endorsed Regional Events. As noted above, the policy and guidelines to help plan one are posted on our [website](#). Leslie Killeen is planning such an event for 2017, *Complex Weavers' South East Gathering*, and details can be found in Leslie's article in this *Newsletter*.

2017 is the year for most regional weaving conferences, such as MAFA, Midwest, ANWG, and NEWS, to name a few (but not all). During odd-numbered years when *Seminars* is not being held, CW's Annual General Meeting takes place at one of these regional conferences. The Board will decide in January at which regional conference the meeting will be held and let you know. I hope that you will be able to attend one of these events in your area during 2017.

During this holiday season when we direct our focus on and are grateful for family and friends, I want to thank all of you for being part of my weaving family. We share, pull together, get things done, and move forward; in the process, we all benefit, both in weaving and friendship.

Please accept my warmest wishes for the holidays to you and yours!

Happy Weaving,

Lynn Smetko



Artwork courtesy of a hand-screened holiday card created by my late father

Board Happenings

Online October Board Meeting

October 14, 2016 to November 13, 2016

This meeting was held electronically via email with the meeting agenda and position papers posted on the CW Board Yahoo Group website. Below are the key actions from the Board.

President, Lynn Smetko, introduced new committee members, Susan Bowman (*Complexity 2018*), Marguerite Kaufman and Kathy Alexander (Co-Chairs for *Seminars 2018*).

Treasurer's Reports

Treasurer, Kathy Warner, reports that we are doing well financially. Amy Norris is doing bank deposits for membership dues and this system is working well. Kathy also commented that financially, *Complexity 2016* is no longer in the black, but there has been a general consensus from the Board and Committee chairs that *Complexity* should not be considered a money-making enterprise, but rather an outreach/educational activity and an appropriate use for CW funds. The 2017 Budget was presented to the Board and was approved.

2016 Survey Results

Mimi Anderson and Amy Norris were thanked for creating and running the survey. Much good information was obtained about both *Seminars* and our members. Some highlights of the survey information showed that our members rank the *Journal* and website as the most important benefits of membership, followed by *Seminars*, Study Groups, Library and Membership Directory. Another interesting fact is that almost 46% of those responding to the survey are over 66 years of age, pointing out that we should be thinking about how to attract younger members. Results of the survey seem to indicate that our members appreciate the fellowship of like-minded weavers and our organization facilitates complex weavers networking with one another.

Complexity 2016 Wrap-Up

Lynn presented the wrap-up report on the *Complexity 2016* exhibit. Moving the show from *Seminars* to Milwaukee turned out to be difficult and required multiple trips. The show was hung by Cathryn Amidei and Ann Niemi at the Jazz Gallery and viewing hours were

limited because of a lack of gallery watchers. However, the exhibit was well attended while it was open. Ann volunteered to return exhibits to their owners from her home town in Michigan. There were unforeseen problems with high shipping and duty fees, but much was learned from the experience that should help us avoid the same problems in the future. Another lesson learned is that having the exhibit stay in one location is the most desirable situation.

Complexity 2018 Report

Susan Bowman discussed the *Complexity 2018* report and said that her committee recommends a minor re-alignment of awards and a \$300 honorarium for jurors. The committee is close to identifying a new online jurying provider that will fill in the gaps last experienced with CaFÉ. Board and Committee Chairs were happy with the *Complexity* plans.

Seminars 2018 Status Report

Realigning *Seminars* with *Convergence* in 2018 was discussed. It is generally felt that having *Seminars* follow *Convergence* is preferable and, if possible, to have them held in the same city as *Convergence*. As the meeting was closing, Marguerite Kaufman announced that the committee is working on dates and location for *Seminars* and that everything should be settled soon for a public announcement. Also, Marguerite and Kathy Alexander will be using more than three people to choose seminar leaders, and they hope that the larger committee will facilitate a good selection of leaders.

Newsletter Annual Report

Chris Jeryan was welcomed back as the Editor of the *Newsletter*. It was felt that quarterly publication of the *Newsletter* following Board meetings allows for timely sharing of meeting proceedings through Board Happenings. There were suggestions that the *Newsletter* and the *Journal* could alert the membership to upcoming articles or request articles in a cross pollination between the two publications. It was pointed out that the *Newsletter* speaks to the latest things that CW is doing and how people can get involved. Much of what appears in the *Newsletter* will also appear on the web in the news feed, but the difference is that the *Newsletter* is preserved, whereas the news feed is not archived.

CW Journal Annual Report

Many comments were made about the value of the *Journal* to our members and appreciation for all the work that goes into it. Ruth MacGregor, the *Journal* Editor, is interested in feedback, both positive and not so positive. It was also pointed out that the *Journal* is online at the website and if a member's copy is slow in arriving in the mail, she/he can read it there.

Advertising

The annual Advertising Report was presented by Angela Schneider. In a summary of the discussion, it was decided not to seek new advertisers unless we lose current ones and to retain 4-6 pages, including the back covers for *Journal* advertising. It was noted that actual copies and PDF files of the *Journal* are available to potential advertisers. Currently the rate for advertising in the *Newsletter* is \$7.50 per issue for 45 words, hyperlinks, and text only. There was a suggestion that in the future we might add another classified ad tier that would include a graphic. Event listings for groups are free, however product ads require a paid classified ad.

Kathi Spangler Donations for Scholarships

Donations made in Kathi Spangler's memory will be used for scholarships to *Seminars*. Guidelines for awarding the scholarship monies will be developed by a three-person committee of Lynn Smetko, Mimi Anderson, and Cally Booker, and presented to the Board at the January meeting for approval.

40th Anniversary Book Update

A report about the 40th Anniversary book project, *Eight Shafts, Beyond the Beginning*, was presented in the online meeting folder. An enormous amount of planning has already been done for the book's structure and each project that will be included. There is a strong volunteer staff and plans for the book are coming along nicely. Lynn addressed the need to have active voices for publicity, and there were a couple of suggestions about persons that might be willing to fill that role.

Policy & Guidelines for CW-Endorsed Events

One of the goals in the Strategic Plan is for CW to have regional events. A document called "Policy & Guidelines for CW-Endorsed Events" was prepared in 2013, but was never reviewed or approved by the Board. With minor changes, the document has now been Board approved and will be used as a guide for persons

wanting to organize CW events in coordination with regional events, or otherwise. It seemed a good idea to make this document available to the membership, and it will be placed on the website, with an article in the *Newsletter* (see p. 5) letting members know where they can find it. The Board feels that once we have had some actual experience with this type of event, the document can be updated, and they suggest it be reviewed by the Board again in a year.

Next Board Meeting

The next online quarterly meeting will begin on January 17, 2017.

Beryl Moody
Secretary

Message From the Librarian

We are blessed to be an organization peopled with generous members. Last month, when I couldn't find our copy of *Ars Textrina* Vol. 3, Pat Hiltz stepped up and donated reprints of three of her articles: "Seventeenth and Eighteenth Century Linens: the German Linen Tradition" (Vol. 3, May 1985); "Roses and Snowballs: the Development of Block Patterns in the German Linen-weaving Tradition" (Vol. 5, June 1986); and "Ligetuhr Arbeit: A Seventeenth Century Compound Mounting and a Family of Associated Weaves" (Vol. 7, June 1987). Many thanks to you, Pat!

It is with a feeling of humility that I admit the following: somewhere, in the shuffling of our Complex Weaver's Library from one librarian's home to the next, several volumes have come up missing. How they fell through the cracks can't be determined, but I'd like everyone who has ever borrowed books, manuscripts, and magazines in the past to check their own library shelves for any CW materials that may have inadvertently gotten mixed into their personal library. Most of our books have been stamped with a red weaver's knot—the logo of our organization—inside the front cover. Magazines might not have been stamped. I only become aware of missing materials when they are requested, so the following is an incomplete list:

Ars Textrina Vol. 3, May 1885. Pat donated a reprint of her article, but there are at least ten other articles that look promising. This volume has a red cover which should make it easier to locate.

The Seventeen Pattern Types: A Study of Repeat Pattern in Two Dimensions by Verda Elliott. This is either a comb-bound volume or a spiral-bound volume, about 75 pages long.

And, lastly, our **Prairie Wool Companion** collection is missing. This is a 16-issue series of magazines that predate *Weaver's*. I am donating my small (four issue) collection of PWC and Nancy Hedberg has donated another issue. To date, we have collected issues 3, 9, 10, 13, and 15. All other donations are willingly considered. Please contact [me](#) before shipping so I can let you know which holes still need filling.

I sincerely hope these losses are not due to a failing on my part. I know how easy it is to misplace books; it is my wildest hope that our books will find their way home to our library. Plain brown wrappers are accepted, and amnesty and anonymity are guaranteed. Thank you!

Jean Hosford
CW Librarian

Members Directory Search Updates

We have recently updated the search functionality in the Members Directory. If you scroll down to the full search capability, you will see that the geographical search has been divided into State/Region-United States/Canada, and Other.

The State/Region-United States/Canada is a dropdown menu. If you select a state or province from the dropdown, the search will return all members in that region, whether their address contains the full state/province name or the abbreviation. For example, selecting Missouri from the dropdown will return all members, whether their address shows Missouri or MO.

Also, remember that you can log in to the members-only portion of our website by using either: your username, which is usually your first and last names without a space (ie. amynorris), or your email address.

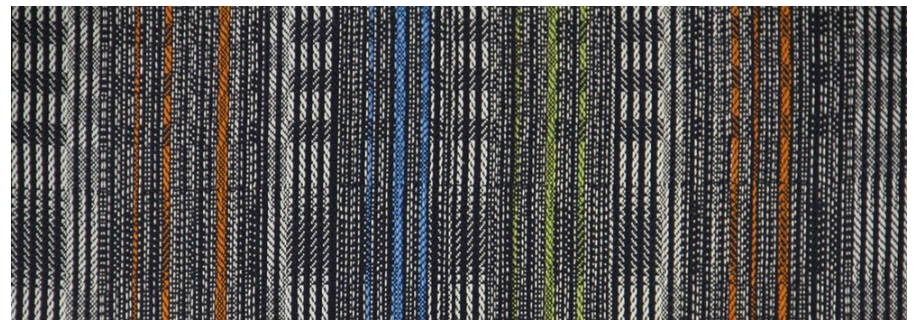
[Amy Norris](#)
Membership

Complex Weavers Events

Recently, the CW Board was approached about endorsing an event for weavers similar to our *Seminars* but on a micro-scale! Two CW members are putting together a gathering (see the following article by Leslie Killeen) called *Complex Weavers' South East Gathering*. The board members were delighted to offer Guidelines and give approval. There also is a specific policy (Policy & Guidelines for CW-Endorsed Events) for events such as this, to be endorsed by Complex Weavers.

Organization of a CW-endorsed event does not need to be intricate or cumbersome and can be much like preparing a workshop for your local guild. A proposal should include a description of the event, speakers, and preliminary budgeting. The CW 2nd Vice President and Treasurer will review and present to the board for approval. Complex Weavers will then be helpful in publicizing the event to members.

Since many of our members have never attended a biennial *Seminars* event, mini-events such as this are a wonderful way for members to experience the camaraderie of like-minded weavers in a regional setting. Would you consider organizing a CW-endorsed event in your area?



Night Reflection by Leslie Killeen

Complex Weavers'

South East Gathering

All Complex Weavers are invited to the upcoming South East Gathering

First, the back story...

During a very successful *Seminars 2016* last summer, a comment heard more than once was "the needs of the audience the local guilds are reaching don't always meet the needs of CW members".

With that in mind Leslie Killeen spoke to Leslie Fesperman, a new CW member who attended her first seminar last summer, about a possible CW happening to be held in Yadkinville, NC. Leslie Fesperman is Program Coordinator for the Fiber Room, a learning resource of The Yadkin Arts Council.

To gauge the interests of CW members in the area, a survey was sent out in October 2016 to 90 members in states including North Carolina, Tennessee, South Carolina, Virginia, and Georgia. We had a 30% response rate—60% of respondents indicated that their fiber needs were presently being met, 100% expressed interest in a regional event, and 80% preferred a two-day gathering if the event is held in Yadkinville, NC due to travel constraints.

We decided to move forward, piggy-backing on a separate three-day workshop Su Butler is presenting at the Fiber Room. It may just be that this CW Gathering model—held during the off year of *Seminars*—could be used elsewhere.

Now, the details of the Gathering...

Date: June 17-18, 2017

Location: Yadkin Valley Fiber Room/ Yadkin Cultural Arts Center, Yadkinville, NC

Cost: \$100.00 CW members, \$125.00 non-CW members. Meals and lodging are separate. **Registration:** January 15, 2017

online at <https://yadkinvalleyfiberroom.com/> or contact Leslie Fesperman, Fiber Program Coordinator, at 919-260-9725 or via email at leslie@yadkinarts.org

For More Information: Leslie Fesperman at the above address or Leslie Killeen at lkilleen@pughkilleen.com Check post-January for more details at <https://www.complex-weavers.org/category/events/> and/or <https://yadkinvalleyfiberroom.com/> for more details.

Start the weekend early as participants and guests enjoy an optional Friday night dinner, at one of the area's premiere wineries. Saturday morning June 17th, Alice Schlein will give a 2-hour lecture, *Explorations in Double Twill*, a record of her experiments in double twill, both tied and untied, for dobby and jacquard. Before having lunch, there will be an opportunity for break-out groups. Saturday afternoon, Su Butler will give a lecture *Color Interaction for Fiber Artists*, discussing the nuances of color theory for weavers. In the spirit of community and fiber-based exchange, dinner will center on further discussion and connections between participants. Following Leslie Killeen's Sunday morning talk about how to *Cultivate a Creative Habit*, there will be more opportunity for discussions in break-out groups. The gathering will culminate with lunch, ending at 1:00 p.m.

The Yadkin Cultural Art Center provides a unique venue for this event, nestled in a small Southern town in North Carolina's Yadkin Valley. It can accommodate 100 participants. The center houses the Welborn Gallery, where the Tapestry Weavers' South annual exhibition, *Filament*, will be on display. While visiting the area, participants and accompanied partners and companions can explore local wineries, take an easy drive to the beautiful Blue Ridge Parkway, do a kayaking outing on the Yadkin River, or a hike across the rock face summit of Stone Mountain. Nearby Elkin, North Carolina, offers golfing opportunities and additional accommodations.

The Fiber Room and Cultural Center are located approximately 1 hour from Charlotte-Douglas International and 1 hour 45 minutes from Raleigh-Durham International Airports. Ample parking and local campgrounds provide other options for road trippers and campers alike, or for \$62 a night, the staff at the local Days Inn will welcome you to their hotel.

COMPLEXITY 2018:

Innovations in Weaving

With *Complexity 2016* barely over, planning is in full swing for *Complexity 2018: Innovations in Weaving*. The first thing you will notice is that we have added a tagline, *Innovations in Weaving*. We found that galleries are looking for an exhibit title that intrigues the viewer, draws them in for a closer look and communicates good copy for public relations use and the media. The word "Complexity" on its own wasn't descriptive enough. We brainstormed a large number of ideas then had robust discussions of pros and cons and made sure the end product was cohesive with CW's branding already in place.

As of this writing, the project plan, budget, prospectus, juror selection, and online submission search are well underway. The committee has been reaching out to the Board and members for expertise in various areas as needed.

It's important that we acknowledge some snags happened in 2016. We are listening! Concerns and suggestions for improvement have been studied and discussed, and we are committed to smoothing out the rough spots.

Once again, there will be a great line-up of awards available at the jurors' discretion. The Diane Fabeck Award for Best in Show (\$500) exists due to the generosity of Joe Fabeck in honor of his wife and Complex Weavers founding member, Diane Fabeck. Joe's donation of \$2500 funded the award at *Complexity 2016* and will be used over the next four *Complexity* exhibits. Also available are 1st Place (\$300 & Complex Weavers Award), 2nd Place (\$200), and 3rd Place (\$150) Awards. Applications will also be submitted to other organizations for their awards.

There were so many great comments about the interesting and beautiful works exhibited at The Fine Line Creative Arts Center in St. Charles, IL, and Riverwalk Artists Association in Milwaukee, WI, that it wasn't difficult to assemble a terrific committee for 2018:

Sandra Hutton taught at the university level for over 20 years.

When she moved to Colorado she was able to resume weaving, a skill she'd learned during graduate coursework. She served as Executive Director of the International Textile & Apparel Association for over 20 years and gained experience supervising fashion shows and mounted exhibits at annual meetings. She has served Complex Weavers as First Vice President and chairperson for *Glamour*, *Glitter*, *Glitz* (2012) and *Complexity 2014*. She has a PhD, BA and MS degrees in textiles, clothing, and related arts.

Leslie Killeen has made weaving an important thread in her life's web, using the interplay of colors to create complex-looking cloth on an eight-shaft computer-aided loom. Leslie has completed the Boston Weavers' Guild Apprentice and Journeyman ratings and has been juried into two HGA Convergence Fashion shows. She is a teacher and author and most recently won the Complex Weavers Award for Excellence in *Complexity 2016*. Leslie's degrees in Biology and Botany along with daily computer usage find frequent applications in her fiber work.

Beverly Weaver is primarily a rug weaver who enjoys the meditative time spent at her loom. She has authored articles for *Handwoven* magazine and her work has been exhibited in juried events along the Front Range and elsewhere. She co-chaired two international juried exhibits for the Pikes Peak Weavers Guild. Having spent many years working in systems software support and development, Beverly has BS degrees in Computer Data Processing and Accounting as well as a Masters degree in Data Processing.

Susan Bowman likes to weave scarves, towels, and yardage for clothing while exploring the intersection of weaving and color. She has written articles for magazines, been accepted into juried exhibits over the years and co-chaired, along with Beverly, two international juried exhibits for the Pikes Peak Weavers Guild. She served on the committee for two previous CW's exhibits. Susan's career was spent in the semiconductor industry as Director of Worldwide Quality, after receiving a BS degree in Engineering and MBA in Business Management.

Stay tuned for more updates!

Susan Bowman
Complexity 2018 Chair

Seminars 2018 Co-Chairs

We are delighted to announce that Marguerite Kaufman and Kathy Alexander have agreed to be our Co-Chairs for *Seminars 2018*!



Marguerite has served as Program Chair and helped run workshops for Blacksheep Handweavers. She is currently a member of Loom and Shuttle Guild of San Francisco and juries new members. Marguerite organized and hung a show of local Complex Weavers for the Northern California Conference of Handweavers (CNCH) in 2016. Marguerite has been weaving since the mid-70's and weaves on a 24-shaft dobby loom. She holds a BS in Math and Chemistry from Michigan State University. Marguerite lives in Woodside, California.

Kathy has served as Program Chair and Co-Chair of CNCH conferences. Kathy had her first exposure to weaving in high school and dabbled in various fiber arts from that point on. However, like many of us, she did not jump into the deep end until retirement. Kathy is a recipient of the Anne Blinks Perpetual Award for Excellence in Handspinning and is a member of Central Coast Weavers. She weaves on 24-shaft dobby looms, including an AVL WDL in their RV! Kathy worked for several high-tech companies in Silicon Valley, and is the beta tester for iWeaveIt, and WeaveIt Pro for Mac. She holds a BS and Master's degree in business and lives in Morro Bay, California.

Marguerite and Kathy are busily planning for Seminars 2018. Announcements of dates and place coming soon!

Mimi Anderson
First Vice President
cwvicepres2016@gmail.com



Of Interest

Occasionally things come our way that might be of interest to some of our members and we'll post them here.

FOLD UNFOLD—Call for Artists

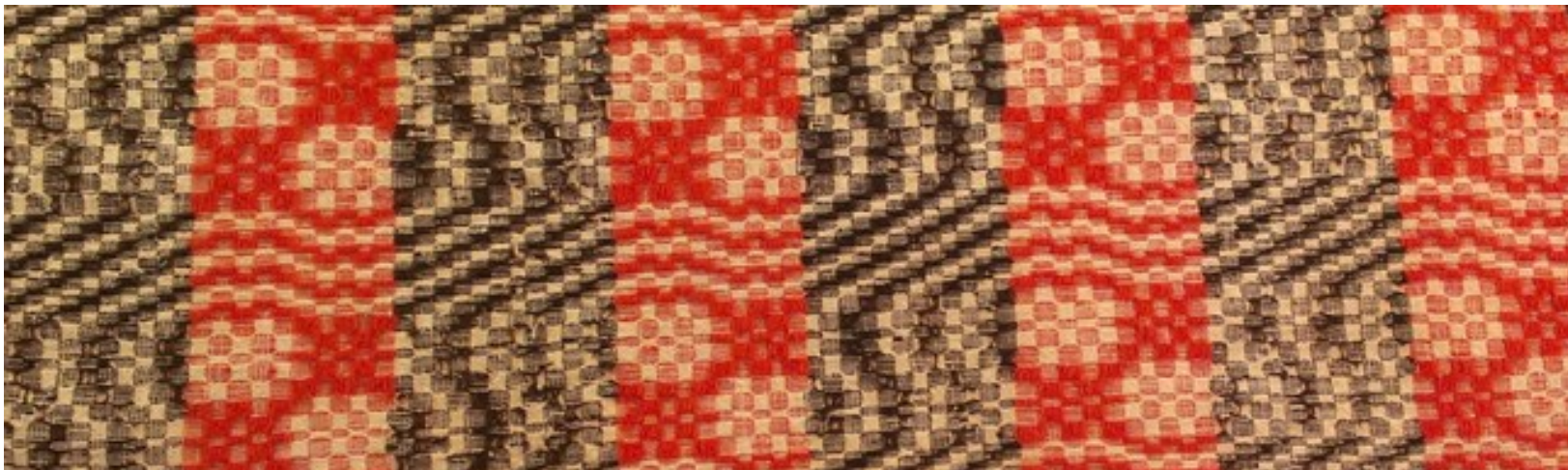
The coverlet, a wonderfully elaborate example of woven bedding, is lesser-known than the quilt when it comes to Southern material culture. These bed-coverings are often devalued or romanticized rather than recognized as having provided real value to households. To address this oversight, anthropologists Susan Falls and artist Jessica Smith are holding a call for weavers to participate in Fold Unfold.

Fold Unfold invites skilled makers to weave functional bedding on manually operated looms as part of this installation. Each coverlet should be informed by overshot geometric patterning popular in the South. To undermine traditional signifiers of class and race, makers will use a modernist color scheme of black, white, and gray.

The coverlets will be folded and stacked to form pillars; one pillar will stand in the entrance of the historic Ware-Lyndon House to connote the role southern women played in the aesthetic narrative of their landscape, and the second pillar in the contemporary Lukasiewicz Gallery will unite the historic with the contemporary.

To reveal individual creative work, the pillars will be taken down and the coverlets will be unfolded in a public performance. The coverlets will then be re-stacked at full size to form a minimalist contemporary sculpture. Each coverlet will be professionally photographed and published in a downloadable catalogue.

For weaving guidelines and submission information go to <https://foldunfold2017.wordpress.com/>



Cat's Paws and Snail's Trails overshot coverlet from the collection of Christine Jeryan

Classifieds

Ply-Splitting from Drawdowns: Interpreting Weave Structures in Ply-Split Braiding by Barbara J. Walker

Learn how to use any single layer drawdown for ply-splitting. Many illustrations and photos guide you through the process. Finishing techniques are included and gallery pages inspire. \$34 USD plus shipping.

www.barbarajwalker.com

Supplementary Warp Patterning: Turned Drafts, Embellishments & Motifs by Barbara J. Walker

This comprehensive book by the authority on supplementary warp weaving will teach you that two (or more) warps are indeed better than one. Chapters on methods, design, and warping are included. \$35 USD plus shipping.

www.barbarajwalker.com

Events

Midwest Weavers Conference: Textiles at the Crossroads

The Midwest Weavers Conference will take place June 12-17, 2017 in Indianapolis, IN. Online registration begins January 8, 2017.

www.midwestweavers.org

ANWG Conference 2017: Treadle Lightly

The 2017 Northwest Weavers

Conference sponsored by ANWG will be held in Victoria, B.C. on the grounds of the University of Victoria. Preconference workshops are June 28-30, 2017; conference is July 1-2, 2017.

www.anwgconference2017.com/hello/

NEWS 2017

NEWS 2017 will be held July 13-16, 2017 at Smith College, Northampton, MA.

<http://newenglandweaversseminar.com/news-2017-conference-information/>

MAFA Conference 2017: A Kalei- doscope of Possibilities

The MAFA Conference 2017 will be held July 20-23, 2017 at Millersville University, Millersville, PA. Madelyn van der Hoogt is keynote speaker.

<http://mafafiber.org/conference-2017.php>

Southeast Fiber Forum

Study—Connect—Relax

Offering 14 workshops in a wide range of fiber arts. Registration opens October 1 for SFFA members, October 15 for non-members. Arrowmont School of Arts & Crafts, Gatlinburg, TN. April 20-23, 2017.

www.sefiberforum.org

Your Journal:

Share Your Weaving Knowledge and Experiences

Inside every CW member is a story and wealth of knowledge! Sharing our experience and knowledge is the heart of CW—unlike other publications, we do not solicit articles from individuals outside our organization. In an effort to “share information and encourage interests”, Complex Weavers welcomes articles from individual weavers as well as study group members. Material for the *Journal* is given priority according to the date received. Late or lengthy submissions are subject to available space. Classified and commercial advertisements should be sent to the Advertising Manager. Address changes may be made by logging on to the website and updating your member profile or by contacting the Membership Chair. If you do not receive your *Journal* when you think you should, please sign in to the Membership directory to confirm that your membership and contact information are current.

2017-18 Publication Schedule:

June 2017: Deadline March 15, 2017

October 2017: Deadline July 15, 2017

February 2018: Deadline November 15, 2017

Journal Editor: Ruth MacGregor at CWJournalEditorRM@gmail.com

Newsletter Editor: Christine Jeryan at cjeryan@comcast.net

Editing Team: Mimi Smith, Janet Stollnitz, Prue Hill, and Elaine Plaisance

Advertising: Angela Schneider at akspins@comcast.net

Membership/Mailing List: Amy Norris at CWMembership@amyfibre.com

Printing and Distribution: Lynn Smetko at CWPresidentLFS@gmail.com

CW Journal Article Guidelines are posted on the CW website or can be obtained from the Editor. Please consult them before starting or submitting your article. The Guidelines will answer a lot of your questions and save you time. Your Journal staff, all volunteers, are ready and eager to help you with a contribution.