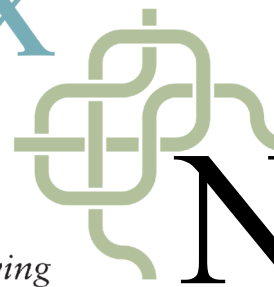


# COMPLEX WEAVERS

*Encouraging curiosity, exploration, innovation in weaving*

May 2020 | Number 128



# Newsletter

## In this issue

President's Letter  
Treasurer's Report  
Board Happenings  
2020 Election Results  
*Seminars 2020*  
*Complexity 2020*  
Exciting CW Openings  
Librarian's Corner  
CW Social Media  
CW Study Groups  
40th Anniversary Book  
Classifieds & Events

## President's Letter

Dear Members,

A LOT has been happening in this mixed-up world and much has changed. We have all been walking a very bumpy road these past few months. We hope that all our members and loved ones are safe and in good health.

I am very sad that I will not be able to see many of you in Knoxville; the state of Tennessee determined that a gathering of our size would not be safe during July. We were convinced that their determination was correct, but for contractual reasons we delayed official cancellation of *Seminars 2020* until our event was cancelled by the Hilton.

**Complex Weavers Seminars** will return in 2022. We are hearing a lot about the potential for holding some seminars on a virtual platform, and many of you are aware of those discussions. It may happen (we still have lots to learn) — but if we offer virtual seminars, it will be IN ADDITION to our traditional in-person format that allows us to physically meet, share, touch, and learn.

Here is a wrap-up of our summer news:

**Seminars 2020:** Cancelled due to Covid-19. Gigantic “thank yous” go to Co-Chairs Cathie Chung and Diane Smith and their team of volunteers. They met every obstacle and challenge in this unusual term and did so with professionalism and grace.

**Complexity 2020:** The actual physical exhibit is cancelled due to Covid-19. Again, thanks go to Bettes Silver-Schack and her valuable support team. BUT WAIT! The story doesn't end there. A virtual, online *Complexity* gallery is under construction, opening late June. Stay tuned!

**CW Annual General Meeting 2020:** During even-numbered years, our annual meeting is held during Seminars; but this year such an in-person meeting will not be possible. The Board is learning to Zoom, and plans to hold a virtual meeting rather than a physical one in July. All members will be invited to “attend”—you can expect an email with more details in the near future. We'll be installing our newly elected officers at this meeting, plus covering a general review of CW business.

The Board is seeking volunteers to work on the *Seminars* team for 2022 and welcomes proposals for remote learning. Contact Cathy McCarthy at [2022CWctmcc@gmail.com](mailto:2022CWctmcc@gmail.com).

This is my last letter...the next time you'll read a President's message, it will be from our newly elected officer, Cathy McCarthy. Cathy and Eileen Driscoll will be installed as President and First Vice President, respectively, at our virtual Annual Meeting in July. Going forward, our organization will be in good hands.

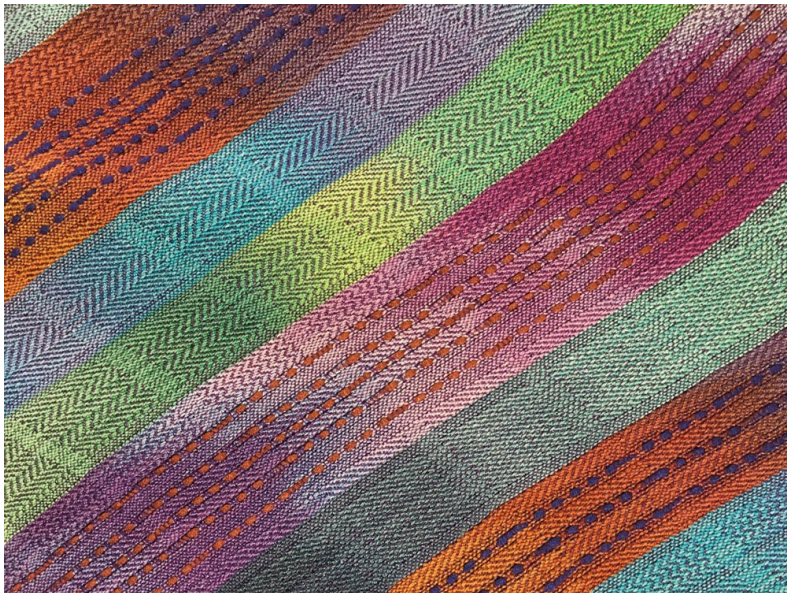
We have such a wonderful group of individuals on this Board. I have really enjoyed my term as President and getting to know everyone. (Even this year! LOL) As Immediate Past President, I will remain on the Board helping Cathy and Eileen.

Stay safe, and keep weaving up that stash!

Happy Weaving,

Mimi

Mimi Anderson  
[cwpresidentmda1820@gmail.com](mailto:cwpresidentmda1820@gmail.com)



Not a Wallflower Anymore by Martha Town

# Treasurer's Report

## I<sup>st</sup> Quarter 2020

The current bank account balances as of the end of the 1<sup>st</sup> Quarter of 2020 are:

PayPal	\$ 14,329.02
Checking	\$ 65,165.53
Savings - Restricted	\$ 57,928.61
Savings - Unrestricted	\$206,089.05
<b>Banking Total</b>	<b><u>\$343,512.21</u></b>

\*Seminars Registration Fees \$ 89,368.47

**Total Funds** **\$432,88.68**

The current balances in the Restricted Funds are:

Complexity Fund	\$ 25,000.00
Manuscript Recovery Fund	\$ 3,500.00
Friendship Fund	\$ 520.12
Memorial Fund	\$ 500.00
Silent Auction Fund	\$ 26,058.49
Kathi Spangler Fund	\$ 850.00
Diane Fabeck Fund	\$ 1,500.00

**Total Restricted Funds** **\$57,928.61**

\*In May the Seminars registration fees have been refunded except for a \$25 handling fee per registrant. This will be reflected in next quarters Treasurer's Report.

Please feel free to contact me if you have any questions.

Linda Kaufman  
Treasurer

# Board Happenings

## Pandemic Pandemonium

April Board Meeting  
April 13, 2020 to May 5, 2020

### **Complexity 2020:**

Mid-meeting all things changed with cancellations for Knoxville. By end of meeting (and beyond) discussions led to the opportunity and feasibility for a virtual exhibit.

### **Seminars 2020:**

During this meeting, things changed from "wait-and-see" to cancelling *Seminars 2020*. Tennessee will not be safe in July for a group gathering. Leaders and registered attendees were notified, refunds were processed.

### **Social Media:**

Incoming First Vice President, Eileen Driscoll, was made chair of this newly formed committee, and is gathering a team of volunteers. She will report to the board and the membership to increase Complex Weavers' digital presence.

### **Financial Strategy and Investing:**

Alison Giachetti, who joined the CW Board in January as chairman of this committee was made full Director on the Board. The committee upgraded its name from Investment Committee to better reflect the goals of the committee.

### **Treasurer's Report:**

The Treasurer's report was accepted and passed unanimously.

### **Minutes:**

The minutes for the January meeting were accepted and passed unanimously.

### **Annual Membership Meeting:**

Since we will not be meeting at *Seminars*, the Annual Meeting will be held by virtual platform. Lots to learn before announcing details.

Mimi Anderson for Kathleen Groves, Secretary

## 2020 Election Results

Election Results are in!

Many congratulations to our newly elected officers: Cathy McCarthy as President and Eileen Driscoll as First Vice President. Thank you to all members who participated and cast their votes online.

Installation will be at the CW Annual General Meeting.



Cathy McCarthy, President



Eileen Driscoll, First Vice President



2020 has been a roller coaster year so far. We hope you and your families are safe and healthy.

Planning *Seminars 2020* has been quite the challenge. *Seminars* is an exciting part of Complex Weavers, and that excitement helped keep our planning focused and on track despite significant obstacles. However, making sure we can all stay healthy is our highest concern, and we have concluded that we must do the responsible thing.

It is with mixed emotions we are cancelling *Seminars 2020*. We will miss seeing everyone and exchanging ideas.

The volunteer efforts that went into planning *Seminars 2020* are appreciated more than we can say. As with everything in our organization, the tasks required to create our conference were generously handled by volunteers. In addition, as we navigated the many challenges that came our way, everyone involved responded with patience and understanding, for which we are grateful. Thank you!

#### **Refund**

All attendees will receive a full refund of the money paid for registration, less a \$25 administrative charge. This administrative fee does not completely cover the out-of-pocket costs we've already incurred in planning *Seminars*, but it will go a long way to put us on better financial footing as we start preparing *Seminars 2022*.

If you used a credit card to pay when you registered for the conference, the money will be refunded to your card. If you paid by check, CW will send you a refund check.

#### **Donation**

A number of attendees have emailed us wanting to make a tax deductible contribution to Complex Weavers. If you would like to do so now and would like the contribution deducted from your refund,

please let us know the amount. If you used a credit card, your donation (and the \$25 administrative fee mentioned above) will be deducted from your registration fee and the balance refunded to your card. If you paid by check, CW will send you a refund check. CW will also send a letter confirming your tax deductible contribution.

#### **Hotel Reservations**

Please cancel your Hilton Knoxville hotel reservation. The simplest method is by using the original confirmation email sent to you by the Hilton:

- Go to the confirming email from the Hilton.
- Click on the reservation link and then the "Cancel My Reservation" button.
- You will then receive an email from the Hilton confirming your cancellation.

Stay safe and healthy. As we weave away our stash, we look forward to *Seminars 2022*.

Cathie and Diane  
Co-chairs, *Seminars 2020*  
[cwseminars2020@gmail.com](mailto:cwseminars2020@gmail.com)

## *Complexity 2020*

With great happiness I can report that *Complexity 2020* will go forward. The Board of Complex Weavers has approved and set into motion a plan to create a Virtual Exhibition. My thanks go out to the volunteers who will be in charge of this task!

The jurors will submit their findings, including award winners, and announcements will go out to artists on June 1 according to the time table in the original Prospectus.

The show is expected to launch on June 29 and full information will be supplied to members of Complex Weavers.

Bettes Silver-Schack  
[cwcomplexity2020@gmail.com](mailto:cwcomplexity2020@gmail.com)



# Exciting CW Openings

Our organization relies on volunteers for everything it does, from the biggest jobs to the smallest. Every so often, one of us steps down, and we need someone new to step up and fill that vacancy.

Complex Weavers needs a few people to fill key positions for the next two years. These volunteer positions are:

- *Complexity* 2022 Chairperson
- Co-Chairs for Complex Weavers *Seminars* 2022
- Newsletter Editor

## ***Complexity* 2022 Chair**

The *Complexity* Chair works with the CW Board and others to make our biennial exhibition a reality. The preparatory tasks, more or less in order, include securing a venue for *Complexity*, gathering a committee to work on the exhibition, collecting art submissions, identifying a juror (or jurors) for the show, determining if refreshments will be served on opening night, or the juror talk night, and arranging for those refreshments. As the opening date approaches, tasks involve securing art submissions, hanging the works before opening and taking down the show afterwards (unless the venue hangs the show), and returning art work to the artists, among other things. This is a two-year position, and you will have full benefit of the experience of previous *Complexity* Chairs. If you are interested in taking on this very fun job, please contact Cathy McCarthy at [2022CWctmcc@gmail.com](mailto:2022CWctmcc@gmail.com)

## **Co-Chairs, Complex Weavers *Seminars* 2022**

The first job of the *Seminars* Co-Chairs involves working with the CW Board to determine a location for *Seminars*, though the location has pretty much been selected for 2022. Once the location is known, the Co-Chairs secure a venue to host *Seminars* and all our activities, negotiate hotel accommodations for attendees, select instructors and seminar topics, and oversee the many activities that go along with *Seminars*, like Off the Runway, Marketplace, the Fashion Show, the Silent Auction, and the Poster Sessions, to name a few. You do not have to do these jobs all by yourselves (thank goodness), but can have a chairperson for each of the activities. This job may be a lot easier for *Seminars* 2022 than in

years past, as our conference is basically being moved from 2020 to 2022, with most of this year's plans carrying over to 2022. Only a couple of instructors had conflicts, so most of the hard work is done! This is a great opportunity to work behind the scenes on a major conference without starting from scratch. Again, if interested, contact Cathy McCarthy at [2022CWctmcc@gmail.com](mailto:2022CWctmcc@gmail.com)

## **Newsletter Editor**

The CW Newsletter Editor is charged with editing and publishing our quarterly digital newsletter. Working with the CW Board, the Newsletter Editor collects reports, articles and other news for the members, works with the Advertising Chair for classifieds and event announcements, ties all the news together and makes it attractive, ready for publication by email and on the website on an appointed date. This is a wonderful job to keep current on Complex Weaver events and news. A good command of written English would be most helpful and experience with Microsoft Publisher is a plus. Cathy McCarthy would love to hear from you if interested in doing this very important job for our membership! [2022CWctmcc@gmail.com](mailto:2022CWctmcc@gmail.com)

# Librarian's Corner

I assume that everybody has been finishing projects, thinking about new ones and weaving the loose ends of life back into place. I have found the past few months surprisingly satisfying (once I got over my initial anxiety) as I have had time to tackle the stacks of undone projects, overdue housework, and mending. Yes, mending. I began with mending my very first handwoven garment—a kimono inspired jacket whose cuffs had worn to a tattered, wispy memory. I rummaged through early handwovens to find a piece of cloth dating to the same era. Early mornings are the best light for sewing, and so each morning I stitched and drank coffee. Work pants, work vest, and then wool socks followed. I'm not done yet, but I've made such progress it's encouraging. And, whilst mending, I've contemplated the next warps. Time has opened up for warp winding and eventually weaving. It is not the full-on immersion at the loom that I'd imagined initially when the world contracted to the four walls of my home—but, a calm process forward that includes gardening and cooking and walks. So, thank you to everyone self-quarantining at home who realized that your librarian wanted to stay home too.

Shortly after submitting my last report in February, I was contact-

ed by Jan Paul who wished to donate a copy of a Japanese book she had recently helped translate. (*The Meaning of the Hidden Letter Saganishiki: 19<sup>th</sup> Century–21<sup>st</sup> Century* written by Miyako Ide.) The author did the initial Japanese to English translation, and Jan refined the English and used more standard weaving terms. The book covers an obscure tradition of weaving gold coated paper and silk into intricate designs. The looms are primitive board looms with the sheds picked up and stored on bamboo spatulas. There are many intriguing photos, but unfortunately the captions are untranslated. Still, it's quite an interesting book and worth a look. I believe Jan may be a practitioner of this artful branch of weaving; at least one photo indicates her work.

Recently, returning books have begun arriving in the mailbox, but not so many requests. Please feel free to borrow materials, as my local post-office has very little traffic and has implemented safety precautions for both workers and customers.

Jean Hosford  
Librarian

## CW Social Media

CW Social Media needs your help. Many people have responded to our Facebook page with sympathy and understanding that *Seminars* and *Complexity* are cancelled as physical events in 2020. We have almost 3,700 people following us and 3,500 people liking us, thanks to the hard work of Marg Coe, Amy Norris, and Ingrid Knox. If you have not followed the CW Facebook page, please go to <https://www.facebook.com/ComplexWeavers/> and follow and like CW. If you post photos on any social media (Facebook, Instagram, Pinterest), you can tag them #complexweavers.

Social media also needs good content—information that is interesting to members and other weavers. Here is where you can really help CW. You can send email to [CWsocialmedia20@gmail.com](mailto:CWsocialmedia20@gmail.com) with a short description of how CW has inspired your weaving and a high quality photo of a weaving or a publication. Please mention if you have a book, newsletter, online class, blog, teach, website, gallery, or any online resource that other weavers would find inspiring. You are a member of CW for a reason, and we want to share those reasons with other weavers to show them why they want to join CW too. We want to showcase all our members, so don't be shy about submitting your information!

Thank you.

CW Social Media team

## CW Study Groups

I join with all our members in sadness at the Covid-19 pandemic and the people who are suffering, and our own sadness that *Seminars 2020* has been cancelled. But what this means is: more time to learn something new and to get ready for *Seminars 2022*. Are you a study group member? If not, now is the time to join one of our excellent study groups. They are the heart of Complex Weavers.

Study groups with their sample exchanges are an ongoing and vital part of Complex Weavers. Self-organized and financed, they produce samples, newsletters, or other materials for exchange among members. Check out our newest study group, Dimensional Texture, where interlaced threads transform into three-dimensional woven structures. Or look at the list of all our study groups. These groups provide an excellent way for members to become acquainted and share information. Some groups exchange swatches while, in others, members send in original articles, computer drafts and other short bits of information for their newsletters. There are groups who meet face-to-face, but most communicate by mail and e-mail.

Find the complete list and descriptions on the Complex Weavers web site <https://www.complex-weavers.org/member-resources/study-groups/>. Can't find what you're looking for? Start your own study group. Do you have an idea for a new group? For more information, contact Elaine Plaisance, Study Group Coordinator, in the CW website contact list under Board members.

Elaine Plaisance  
Study Group Coordinator



Ginkgo Leaves by Lillian  
Whipple





New CW book in honor of Wanda Shelp and our 40<sup>th</sup> anniversary

## Eight Shafts Beyond the Beginning: Personal Approaches to Design

Enjoy how 72 weavers approach design. The first half of the book encompasses 8-shaft work with emphasis on controlling straight and curved lines to form motifs, using color, and adding personal touches. The second half takes 8-shaft components to 10 to 40 shafts, drawlooms, Jacquards, ply-splitting, and twining through the use of interleaving, tied work, networking, block substitution, graphic (Photoshop) approaches, layering, and other design techniques.



Top, Lynn Smetko  
Bottom, Dorothy Solbrig



Above, Peg MacMorris  
Right, Lesley Willcock

## Publication Coming Soon!

- If you have pre-ordered the book, you will be contacted by email as soon as it's ready to ship.
- Otherwise, once it's in print, you can order it from our website: [complex-weavers.org/market](http://complex-weavers.org/market)  
Retail is \$39.95, plus shipping.
- All who have pre-ordered the book will receive an invoice by email prior to shipping.



## Consider a Donation to CW

Our website now has the capability to accept online donations.

There are four funds to choose from, described here:

<https://www.complex-weavers.org/donate-to-cw/funds/>.

The link to make a donation is:

<https://www.complex-weavers.org/donate-to-cw/>

Please consider a contribution to the fund of your choice to support the mission of CW and the many services provided to its members. Thank you!

## Weavers of the Southern Highlands

Author Philis Alvic says she "wrote a book I wanted to read. I hope there are lots of other people out there that would also like to know about weavers in the southern mountains in the early 20th century." Philis's book is now available for free download at:

[https://uknowledge.uky.edu/upk\\_appalachian\\_studies/4/](https://uknowledge.uky.edu/upk_appalachian_studies/4/)

## Classifieds

### **Ply-Splitting from Drawdowns: Interpreting Weave Structures in Ply-Split Braiding by Barbara J. Walker**

Learn how to use any single layer drawdown for ply-splitting. Many illustrations and photos guide you through the process. Finishing techniques are included and gallery pages inspire. \$34 USD plus shipping.

[www.barbarajwalker.com](http://www.barbarajwalker.com)

### **Supplementary Warp Patterning: Turned Drafts, Embellishments & Motifs by Barbara J. Walker**

This comprehensive book by the authority on supplementary warp weaving will teach you that two (or more) warps are indeed better than one. Chapters on methods, design, and warping are included. \$35 USD plus shipping. [www.lulu.com](http://www.lulu.com) Enter the book title.

## Spinning Wheel Sleuth

Hand Looms, Supplement #21, \$10. Gallinger Loom Design; Sears Hearthside Looms; Nellie Sargent Johnson: Creator of Sears Hearthside Looms; Inga Askling and Her Two-Legged Loom; Loom in a Wallace Nutting Photograph. *Hand Looms, Supplements #1 to #10*, on flash drive. \$15.

Make checks payable to and mail to: The Spinning Wheel Sleuth, P. O. Box 422, Andover, MA 01810. Or via PayPal at [www.spwhsl.com](http://www.spwhsl.com)

## **The Draughts of Jeremiah Fielding 1775 edited by Pat Foster, Janet Dunbar and Lynne Harper.**

This spiral bound book contains over 50 weaving drafts assembled in 1775 by a Lancashire weaver. The original drafts, modern versions, and photographs of modern woven samples are shown.

See <https://www.patfosterweaverdyer.com/>

## **AVL 40-Shaft, V-Series, Computerized Loom for Sale**

30" weaving width, E-Lift, polyester heddles, 15-dent reed, 1/2 Yard sectional beam. (See more details on the AVL website, [V-Series Loom](#)). Price reduced to \$8,000.

Loom is located in San Luis Obispo, California. Enjoy a visit to the beautiful Central Coast of California to pick up your new loom.

Contact:

Gina Hafemeister

805-544-5096 (h)

805-550-9618

[gina.hafemeister@gmail.com](mailto:gina.hafemeister@gmail.com)





## Events and Exhibitions

Many museums and other cultural venues are currently closed. Please check the museum's status before your visit. Many museums have virtual exhibitions or other offerings during this time—a couple are listed below.

### **Delight in Discovery: the Global Collections of Lloyd Cotsen (Washington, D.C.)**

Lloyd Cotsen assembled thousands of textile fragments, garments, and other artworks that reflected his admiration for indigenous crafts and vanishing artistic traditions. His ultimate goal, however, was to create opportunities for a wider audience to appreciate 3,000 years of human creativity. The Textile Museum through December 23, 2020. <https://museum.gwu.edu/delight>

### **Ruth Adler Schnee: Modern Designs for Living (Bloomfield Hills, MI)**

The exhibition presents at its core the body of textile patterns that Adler Schnee has created over the course of her prolific seven-decade career. It affirms her pivotal role in the development of the modern interior. Digital 3-D exhibition at <https://my.matterport.com/show/?m=QatJ9mu3udP&brand=0>

### **Worldly Luxuries: Repetition in Renaissance Textiles (Kansas City, MO)**

This exhibition displays Italian, French, and Spanish textiles influenced by the Middle Eastern trade and aesthetic traditions, spanning the 1400s-1600s. Woven of sumptuous silk and exhibiting varied weaving techniques and ornamentation, these textiles were costly luxury goods and highly prized by the wealthy merchant classes. Nelson-Atkins Museum of Art through June 14, 2020. <https://nelson-atkins.org/events/worldly-luxuries/>

### **In Thread and On Paper: Anni Albers in Connecticut (New Britain, CT)**

This exhibition explores the groundbreaking work and writing of Anni Albers produced in Connecticut from the 1950s until her death. It includes textiles, wall hangings, commercial collaborations, and works on paper. New Britain Museum of American Art through June 14. <https://nbmaa.org/exhibitions/anni-albers>

### **Museum of Art and Design Online Collection of Textiles (New York City)**

The Museum of Art and Design's online permanent collection of more than 2,000 objects representing 95% of the museum's collection is available online, including more than 500 fiber objects. These are both classic and contemporary works by familiar and new artists. <http://collections.madmuseum.org/categories/classifications/Fiber>

## Your Journal: Share Your Weaving Knowledge and Experiences

Inside every CW member is a story and wealth of knowledge! Sharing our experience and knowledge is the heart of CW—unlike other publications, we do not solicit articles from individuals outside our organization. In an effort to “share information and encourage interests”, Complex Weavers welcomes articles from individual weavers as well as study group members. Material for the *Journal* is given priority according to the date received. Late or lengthy submissions are subject to available space. Classified and commercial advertisements should be sent to the Advertising Manager. Address changes may be made by logging on to the website and updating your member profile or by contacting the Membership Chair. If you do not receive your *Journal* when you think you should, please sign in to the Membership directory to confirm that your membership and contact information are current.

#### **2019-2020 Publication Schedule:**

October 2020: Deadline July 31, 2020

February 2021: Deadline November 30, 2020

June 2021: Deadline March 31, 2021

Journal Editor: Ruth MacGregor at [CWJournalEditorRM@gmail.com](mailto:CWJournalEditorRM@gmail.com)

Newsletter Editor: Christine Jeryan at [cjeryan@comcast.net](mailto:cjeryan@comcast.net)

Editing Team: Mimi Smith, Janet Stollnitz, Prue Hill, and Elaine Plaisance

Advertising: Angela Schneider at [ComplexWeaversAds@gmail.com](mailto:ComplexWeaversAds@gmail.com)

Membership/Mailing List: Amy Norris at [CWMembership@amyfibre.com](mailto:CWMembership@amyfibre.com)

Printing and Distribution: Lynn Smetko at [CWPresidentLFS@gmail.com](mailto:CWPresidentLFS@gmail.com)

CW *Journal* Article Guidelines are posted on the CW website or can be obtained from the Editor. Please consult them before starting or submitting your article. The Guidelines will answer a lot of your questions and save you time. Your *Journal* staff, all volunteers, are ready and eager to help you with a contribution.